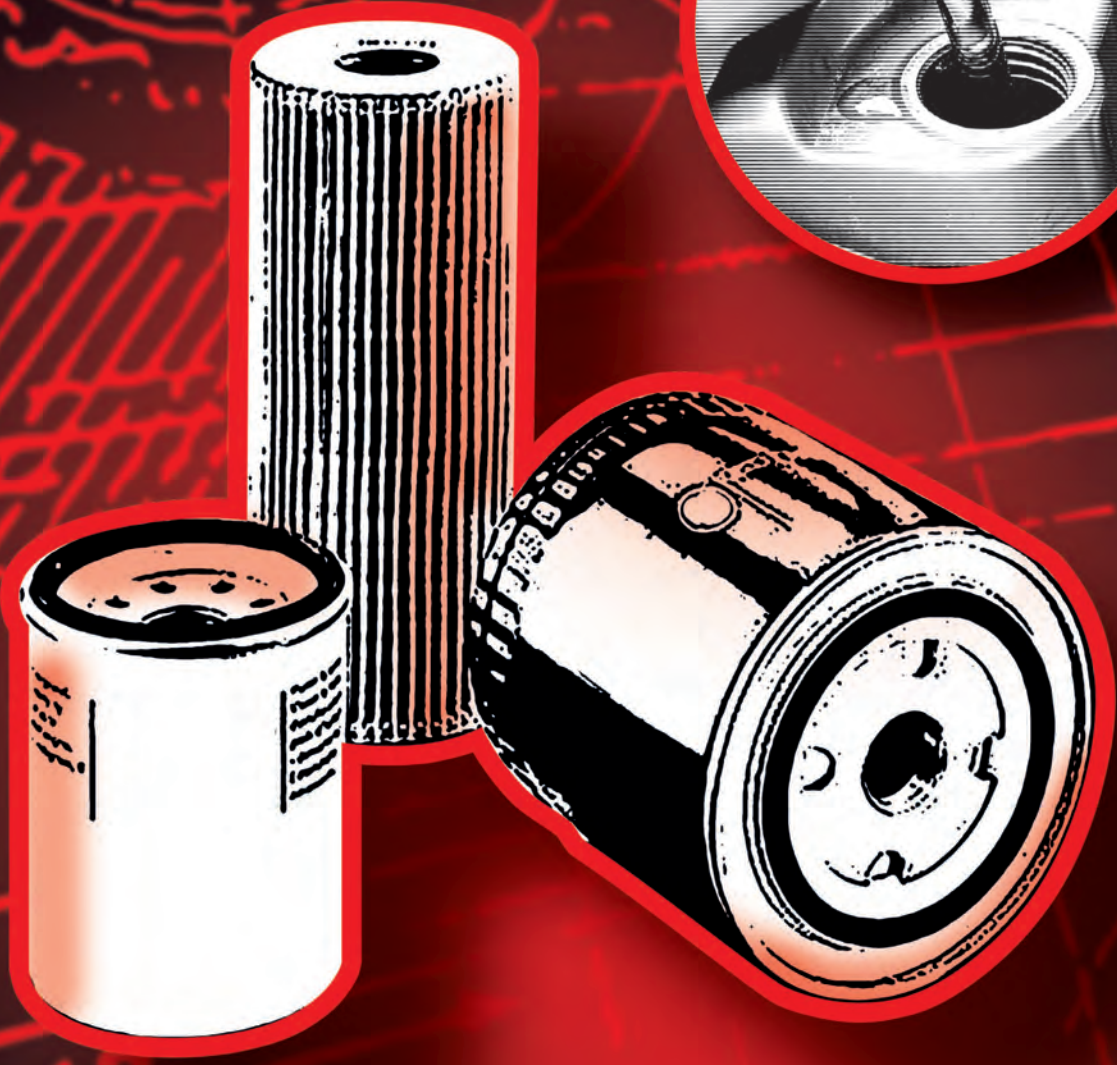
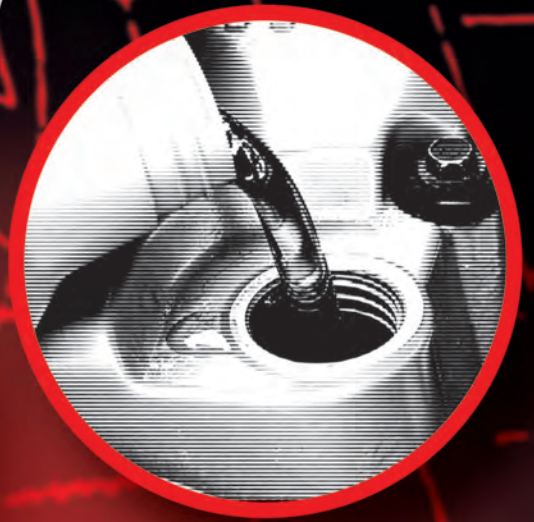


K15



KS TOOLS





Innovation is
our mission!



	PAGE
OIL DRAIN PLUG RELEASE TOOL	602 - 604
OIL DRAIN PLUGS & SEAL RINGS	605 - 622
OIL SUMP TOOL	623
TRANSMISSION OIL COOLANT TOOL	623
OIL DRAIN PLUG THREAD REPAIRER	623 - 625
OIL FILTER TENSION WRENCH	625 - 627
SPECIAL OIL FILTER WRENCH	627
OIL FILTER CAP WRENCH	628 - 635
OIL FILTER CAP WRENCH SET	635 - 637
OIL FILTER CUTTER	637
OIL DIP STICK	637
OIL FILLING AND EMPTYING PUMP	637 - 638
OIL FILLING CONTAINER	639 - 641
OIL COLLECTION PAN	641 - 642

OIL DRAIN PLUG RELEASE TOOL

Oil service wrench square socket for PSA

- For the quick and correct assembly and disassembly of the reduction screws on the oil sump, transmissions and differential
- Internal square
- Specially shaped for use
- For manual operation
- Matt finish
- Chrome vanadium

Application range: Renault, Dacia, Peugeot, Citroën, etc.



	mm	Length mm	g
150.9228	8x10	270.0	275

Oil service internal hexagon wrench

- For the quick and correct assembly and disassembly of the reduction screws on the oil sump, transmissions and differential
- Internal hexagon
- Specially shaped for use
- For manual operation
- Matt finish
- Chrome vanadium



	mm	Length mm	g
150.9628	10x12	215.0	245

Oil service wrench hexagonal point for Fiat/Alfa Romeo

- For the quick and correct assembly and disassembly of the reduction screws on the oil sump, transmissions and differential
- Internal hexagon
- Specially shaped for use
- For manual operation
- Matt finish
- Chrome vanadium

Application range: Alfa Romeo, Fiat, Lancia, Lada, etc.



	mm	Length mm	g
150.9227	12	225.0	280

Oil service wrench square

- For the quick and correct assembly and disassembly of the reduction screws on the oil sump, transmissions and differential
- Internal and external square
- Also suitable for the assembly and disassembly of the oil filter
- Specially shaped for use
- For manual operation
- Matt finish
- Chrome vanadium



	mm	Length mm	g
150.9627	10x10	238.0	340

Oil service internal hexagon wrench

- For the quick and correct assembly and disassembly of the reduction screws on the oil sump, transmissions and differential
- Internal hexagon
- With joint
- For manual operation
- Matt finish
- Chrome vanadium

Application range: Renault, Peugeot, Citroën, Volvo, etc.



	mm	Length mm	g
150.9225	10x14	256.0	280

Oil service hexagon wrench for Mercedes and BMW

- For the quick and correct assembly and disassembly of the oil filling screw on the transmission
- Internal hexagon
- External hexagon
- Specially shaped for use
- For manual operation
- Matt finish
- Chrome vanadium

Application range: Mercedes W107, W123, W124, W126, W129, W163, W170, W201, W202, W203, W208, W210, W215, W220 Gearbox: 100, 110, 115, 116, 117, 615, 616, 617; BMW



	mm	mm	Length mm	g
150.9231	14,0	17,0	235,0	230

Oil service hexagon wrench for Mercedes and BMW

- For the quick and correct assembly and disassembly of the oil filling screw on the transmission
- Internal hexagon
- External hexagon
- Specially shaped for use
- For manual operation
- Matt finish
- Chrome vanadium

Application range: Mercedes Gearbox: 102, 103, 104, 110, 115, 116, 117, 119, 120, 123; BMW



	mm	mm	Length mm	g
150.9232	14,0	13,0	235,0	230

Oil service wrench for VAG

- For the quick and correct assembly and disassembly of the oil filling screw on the transmission and the oil drain plug on the oil sump
- Internal hexagon
- External hexagon
- Specially shaped for use
- For manual operation
- Matt finish
- Chrome vanadium

Application range: Audi, Seat, Škoda and Volkswagen



	mm	mm	Length mm	g
150.9233	21,0	17,0	250,0	240

8 in 1 Oil service wrench

- For the quick and correct assembly and disassembly of the oil reduction and oil filling screws on transmission, the oil sump and differential
- Special wrench with 8 gear profiles
- Profile change by turning the wrench head
- For manual operation
- Special steel

Profile and wrench widths:
4-point: 10.0 - 11.0 - 12.0 - 13.0 - 14.0 - 15.0 mm
8-point: 14.0 - 17.0 mm

Application range: Audi, Seat, Ford, Renault, Volkswagen, etc.



	mm	Length mm	g
150.9237	45,5	155,0	330

8 in 1 Oil service wrench

- For the quick and correct assembly and disassembly of the oil reduction and oil filling screws on transmission, the oil sump and differential
- Special wrench with 8 gear profiles
- Profile change by turning and snapping the wrench head
- For manual operation
- Matt chrome
- Special steel

Profile and wrench widths:
 4-point: 8.0 - 10.0 mm - 3/8" - 1/2"
 6-point: 10.0 - 12.0 - 14.0 - 17.0 mm

Application range: Audi, Seat, Ford, Renault, Volkswagen, etc.



	L mm	D1 mm	D2 mm	g
150.9302	270.0	40.0	50.0	620

Special oil service wrench for Toyota and Honda

- For quick and correct assembly and disassembly of the draining screw on the oil sump
- With 3/8" square drive
- For manual operation
- For a long life in robust workshop use
- Special steel

Application range: Toyota, Honda



	mm	L mm	g
150.9305	14,0	94,0	100

Flexible oil service bit socket for internal hexagon screws

- Internal hexagon
- Special flexible bit socket for actuating the transmission oil control screw on manual and automatic transmissions
- For hard to reach places
- Internal square drive to DIN 3120/ISO 1174
- With press fitted insert bit
- For machinery usage
- Phosphate
- Chrome molybdenum

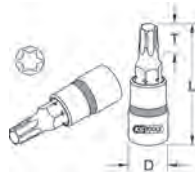
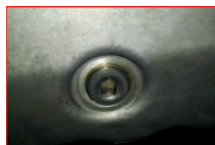
Application range: Audi, Seat, Volkswagen with manual and automatic transmissions



	mm	Length mm	g
150.9257	17,0	48,2	110

Bit socket for TX screws

- TX
- Internal square drive to DIN 3120 / ISO 1174 with ball reception
- Short execution
- Press fitted nickel plated insert bit
- For manual operation
- Matt finish
- Chrome vanadium



		D mm	L mm	T mm	g
911.1366	T45	22.0	55.0	17.0	90

Oil service hexagonal socket with magnet

- 6-point
- FlankTraction profile
- Special socket for assembly and disassembly of oil drain and transmission oil control screw
- With strong, integrated magnets
- The magnets prevent the screws from falling down into the collection pans
- Internal square in accordance with DIN 3120/ISO 1174
- Perfect profile for correct actuation
- For manual operation
- Matt finish
- Chrome vanadium

Application range: Audi, Alfa Romeo, Ford, Mercedes, Nissan, Toyota, Volkswagen, etc.



	mm	Ø mm	Length mm	g
150.1404	13	19,0	20,5	23
150.1405	14	20,0	20,5	23
150.1406	17	24,0	34,0	34
150.1407	18	25,0	23,5	40
150.1408	19	26,0	44,0	44
150.1409	21	29,0	23,5	60

Oil service TX socket with magnet

- TX with pins
- Special socket for assembly and disassembly of oil drain and transmission oil control screw
- With strong, integrated magnets
- The magnets prevent the screws from falling down into the collection pans
- Internal square in accordance with DIN 3120/ISO 1174
- Perfect profile for correct actuation
- For manual operation
- Matt finish
- Chrome vanadium

Application range: Opel, Mercedes, Fiat, etc.



		Ø mm	Length mm	g
150.1415	T45	19,0	34,0	31

Oil service bit socket for internal square screws with magnet

- Internal square
- Special socket for assembly and disassembly of oil drain and transmission oil control screw
- With strong, integrated magnets
- The magnets prevent the screws from falling down into the collection pans
- Internal square in accordance with DIN 3120/ISO 1174
- Perfect profile for correct actuation
- For manual operation
- Matt finish
- Chrome vanadium

Application range: Renault, Dacia, Ford, Opel, Mitsubishi, Nissan, Volvo, etc.



	mm	Ø mm	Length mm	g
150.1416	8	19,0	30,0	32
150.1438	9,5	19,0	30,0	34
150.1417	10	19,0	30,0	35
150.1429	10,5	19,0	30,0	38
150.1433	11	19,0	30,0	40
150.1434	13,1	19,0	30,0	42

Oil service bit socket for internal hexagon screws with magnet

- Internal hexagon
- Special socket for assembly and disassembly of oil drain and transmission oil control screw
- With strong, integrated magnets
- The magnets prevent the screws from falling down into the collection pans
- Internal square in accordance with DIN 3120/ISO 1174
- Perfect profile for correct actuation
- For manual operation
- Matt finish
- Chrome vanadium

Application range: Audi, Seat, Opel, Fiat, Ford, Volkswagen, etc.



	mm	Ø mm	Length mm	g
150.1436	8	19,0	30,0	32
150.1439	9	19,0	30,0	34
150.1441	10	19,0	30,0	35
150.1442	12	19,0	30,0	38
150.1443	13	19,0	30,0	40
150.1444	14	19,0	30,0	42
150.1446	17	19,0	30,0	52



Oil service square socket

- 4 point
- Special socket for assembly and disassembly of oil drain and transmission oil control screw
- Internal square in accordance with DIN 3120/ISO 1174
- Perfect profile for correct actuation
- For manual operation
- Matt finish
- Chrome vanadium

Application range: BMW, Ford, Renault, Toyota, etc.



3/8"

	mm	Ø mm	Length mm	g
150.1426	10	19,0	36,0	47

Oil service bit socket for internal triangle

- Internal triangle
- Special socket for assembly and disassembly of oil drain and transmission oil control screw
- Internal square drive to DIN 3120/ISO 1174
- Perfect profile for correct actuation
- For manual operation
- Matt finish
- Chrome vanadium

Application range: Renault, Citroën, Peugeot, etc.



3/8"

	Ø mm	Length mm	g	
150.1427	10	19,0	36,0	38

Oil drain bit socket for spline (XZN®) screws

- Multi-tooth (XZN®) with tamper proof screws
- Special bit socket for assembly and disassembly of oil drain and transmission oil control screw
- Internal square drive to DIN 3120/ISO 1174 with ball reception
- With press fitted nickel plated insert bit
- Perfect profile for correct actuation
- For manual operation
- Chrome plated and mirror polished
- Chrome vanadium

Application range: Audi A2, A3, A4, A6/ Škoda Fabia, Octavia, Superb/ Volkswagen Passat, Golf IV, LT, etc.



3/8" 1/2"

		L mm	g	
150.1437	3/8"	M16	37,0	55
150.9364	1/2"	M16	50,0	140

MASTER oil service bit socket set

- For screws on oil sumps, transmission, differential, etc.
- Special wrench set for the assembly and disassembly of most oil drains and transmission oil control screws
- In parts with strong, integrated magnets
- The magnets prevent the screws from falling down into the collection pans
- Internal square drive to DIN 3120/ISO 1174
- Perfect profile for correct actuation
- For manual operation
- Matt finish
- Chrome vanadium
- Includes storage rail

Application range: Audi, Ford, Renault, Peugeot, Mercedes, Volkswagen, etc.



3/8"

	g
150.1445 23 pcs MASTER oil service bit socket set	960

consists of:

		g
150.1404	Oil service hexagonal socket with magnet, 13 mm	23
150.1405	Oil service hexagonal socket with magnet, 14 mm	23
150.1406	Oil service hexagonal socket with magnet, 17 mm	34
150.1407	Oil service hexagonal socket with magnet, 18 mm	40
150.1408	Oil service hexagonal socket with magnet, 19 mm	44
150.1409	Oil service hexagonal socket with magnet, 21 mm	60
150.1436	3/8" Oil service bit socket for internal hexagon screws with magnet, 8 mm	32
150.1439	3/8" Oil service bit socket for internal hexagon screws with magnet, 9 mm	34
150.1441	3/8" Oil service bit socket for internal hexagon screws with magnet, 10 mm	35
150.1442	3/8" Oil service bit socket for internal hexagon screws with magnet, 12 mm	38
150.1443	3/8" Oil service bit socket for internal hexagon screws with magnet, 13 mm	40
150.1444	3/8" Oil service bit socket for internal hexagon screws with magnet, 14 mm	42
150.1446	3/8" Oil service bit socket for internal hexagon screws with magnet, 17 mm	52
150.1416	3/8" Oil service bit socket for internal square screws with magnet, 8 mm	32
150.1438	3/8" Oil service bit socket for internal square screws with magnet, 10,5 mm	34
150.1417	3/8" Oil service bit socket for internal square screws with magnet, 10 mm	35
150.1429	3/8" Oil service bit socket for internal square screws with magnet, 10,5 mm	38
150.1433	3/8" Oil service bit socket for internal square screws with magnet, 11 mm	40
150.1434	3/8" Oil service bit socket for internal square screws with magnet, 13,1 mm	42
150.1437	3/8" Oil service XZN socket with tamper proof screws, M16	55
150.1415	Oil service TX socket with magnet, T45	31
150.1426	Oil service square socket, 10 mm	47
150.1427	3/8" Oil service bit socket for internal triangle, 10 mm	38



Oil service wrench set

- For conical screws on the oil sump, transmission differential, etc.
- Special wrench set for the assembly and disassembly of most oil drains and transmission oil control screws
- External drive hexagonal socket 21.0 mm
- Perfect profile for correct actuation
- For manual operation
- Matt finish
- Chrome vanadium
- In durable steel storage case

Application range: Audi, Ford, Renault, Peugeot, Mercedes, etc.



	g
150.9390 6 pcs Oil service wrench set	800

consists of:

		g
150.9391	Oil drain screw hexagon-Socket 8 + 10 mm	110
150.9392	Oil drain screw socket hexagon 5/16" + 3/8"	110
150.9393	Oil drain screw hexagon 8 mm + 3/8" (10 mm)	110
150.9394	Oil drain screw hexagon-Socket 12 mm + square 11 mm	110
150.9395	Oil drain screw hexagon-Socket 14 mm + square 13 mm	110
150.9396	Oil drain screw hexagon-Socket 17 mm + 1/2"	110

Oil sump plug and oil filter set

- For conical screws on the oil sump, transmission differential, etc.
- Ideal set for the assembly and disassembly of the oil sump and transmission oil control screw
- With oil filter clamping wrench and oil filter pins
- Perfect profile for correct actuation
- For manual operation
- Matt finish
- Chrome vanadium
- In durable plastic storage case

Application range: Audi, Ford, Renault, Peugeot, Mercedes, Volkswagen, etc.



3/8"

	g
150.9300 13 pcs Oil sump plug and oil filter set	1.55

consists of:

		g
150.9313	Oil filter tension wrench with adapter 1/2" to 3/8"	370
150.9390	Oil drain plug key set, 6pcs	800
155.5002	Band wrench f.oil filter casing,65-110mm	241
918.3806	CHROME+ spark plug socket, 3/8", 21mm	60
918.3807	CHROME+ drive adaptor, 3/8", 1/2" Fx3/8" M	60
918.3885	CHROME+ TX bit socket, 3/8", T40	35
918.3886	CHROME+ TX bit socket, 3/8", T45	50
918.3898	CHROME+ extension, knurled, 3/8", 250mm	240

ALFA ROMEO OIL DRAIN PLUG

Oil drain plug, M18 x 1.5 x 27 mm

- Internal hexagon
- Without seal ring



Content		1000	mm	g
430.1001	10	M18x1,5x27	8	570
430.2001	25	M18x1,5x27	8	1425

Suitable seal ring:



Copper seal ring 26 x 18 x 2.5 mm

Content		Outer Ø mm	Inner Ø mm	Thickness mm	g
430.1506	10	26.0	18.0	2,5	30
430.2506	25	26.0	18.0	2,5	75

Oil drain plug M22 x 1.5 x 13.5 mm

- Internal hexagon
- Without seal ring



Content		1000	mm	g
430.1002	10	M22x1,5x13,5	10	540
430.2002	25	M22x1,5x13,5	10	1350

Suitable seal ring:



Aluminium seal ring 30 x 22 x 1.5 mm

Content		Outer Ø mm	Inner Ø mm	Thickness mm	g
430.1517	10	30.0	22.0	1,5	10
430.2517	25	30.0	22.0	1,5	25

Oil drain plug M12 x 1.25 x 13 mm

- External hexagon
- Without seal ring



Content		1000	mm	g
430.1331	10	M12x1,25x13	17	160
430.2331	25	M12x1,25x13	17	400

Suitable seal ring:



Copper seal ring 16 x 12 x 1.5 mm

Content		Outer Ø mm	Inner Ø mm	Thickness mm	g
430.1538	10	16.0	12.0	1,5	10
430.2538	25	16.0	12.0	1,5	25

Oil drain plug M22 x 1.5 x 16 mm

- External hexagon
- Without seal ring



Content		1000	mm	g
430.1003	10	M22x1,5x16	18	430
430.2003	25	M22x1,5x16	18	1075

Suitable seal ring:



Aluminium seal ring 30 x 22 x 1.5 mm

Content		Outer Ø mm	Inner Ø mm	Thickness mm	g
430.1517	10	30.0	22.0	1,5	10
430.2517	25	30.0	22.0	1,5	25

AUDI OIL DRAIN PLUG

Oil drain plug, M14 x 1.5 x 22 mm

- External hexagon
- Without seal ring



Content		1000	mm	g
430.1222	10	M14x1,5x22	19	360
430.2222	25	M14x1,5x22	19	900

Suitable seal ring:



Filling ring 20 x 14 x 2.0 mm

Content		Outer Ø mm	Inner Ø mm	Thickness mm	g
430.1520	10	20.0	14.0	2,0	10
430.2520	25	20.0	14.0	2,0	25

Oil drain plug, M14 x 1.5 x 17.5 mm

- External hexagon
- With seal ring



Content		1000	mm	g
430.1027	10	M14x1,5x17,5	19	410
430.2027	25	M14x1,5x17,5	19	1025

BMW OIL DRAIN PLUG

Oil drain plug, M24 x 1.5 x 12 mm

- Internal hexagon
- With seal ring



Content		1000	mm	g
430.1231	10	M24x1,5x12	10	90
430.2231	25	M24x1,5x12	10	225

Oil drain plug M12 x 1.5 x 13.5 mm

- Internal hexagon
- Without seal ring



Content		mm	mm	g
430.1016	10	M12x1,5x13,5	13	130
430.2016	25	M12x1,5x13,5	13	325

Suitable seal ring:



Copper seal ring 17 x 12 x 1.5 mm

Content	Outer Ø mm	Inner Ø mm	Thickness mm	g	
430.1502	10	17.0	12.0	1,5	10
430.2502	25	17.0	12.0	1,5	25

Oil drain plug M12 x 1.5 x 18 mm

- External hexagon
- Without seal ring



Content		mm	mm	g
430.1011	10	M12x1,5x18	17	240
430.2011	25	M12x1,5x18	17	600

Suitable seal ring:



Aluminium seal ring 17 x 12 x 1.5 mm

Content	Outer Ø mm	Inner Ø mm	Thickness mm	g	
430.1512	10	17.0	12.0	1,5	10
430.2512	25	17.0	12.0	1,5	25

Oil drain plug M12 x 1.25 x 13 mm

- External hexagon
- Without seal ring



Content		mm	mm	g
430.1012	10	M12x1,25x13	14	250
430.2012	25	M12x1,25x13	14	625

Suitable seal ring:



Aluminium seal ring 20 x 12 x 1.5 mm

Content	Outer Ø mm	Inner Ø mm	Thickness mm	g	
430.1513	10	20.0	12.0	1,5	10
430.2513	25	20.0	12.0	1,5	25

Oil drain plug M10 x 1.25 x 13 mm

- External hexagon
- Without seal ring



Content		mm	mm	g
430.1015	10	M10x1,25x13	21	180
430.2015	25	M10x1,25x13	21	450

Suitable seal ring:



Copper seal ring 20 x 10 x 2.0 mm

Content	Outer Ø mm	Inner Ø mm	Thickness mm	g	
430.1508	10	20.0	10.0	2,0	40
430.2508	25	20.0	10.0	2,0	100

Oil drain plug M12 x 1.5 x 13 mm

- External hexagon
- Without seal ring



Content		mm	mm	g
430.1014	10	M12x1,5x13	17	200
430.2014	25	M12x1,5x13	17	500

Suitable seal ring:



Aluminium seal ring 17 x 12 x 1.5 mm

Content	Outer Ø mm	Inner Ø mm	Thickness mm	g	
430.1512	10	17.0	12.0	1,5	10
430.2512	25	17.0	12.0	1,5	25

Oil drain plug M22 x 1.5 x 14 mm

- External hexagon
- Without seal ring



Content		mm	mm	g
430.1013	10	M22x1,5x14	19	750
430.2013	25	M22x1,5x14	19	1875

Suitable seal ring:



Aluminium seal ring 27 x 22 x 1.5 mm

Content	Outer Ø mm	Inner Ø mm	Thickness mm	g	
430.1516	10	27.0	22.0	1,5	10
430.2516	25	27.0	22.0	1,5	25

Oil drain plug, M14 x 1.5 x 20 mm

- External hexagon
- With seal ring



Content				
430.1017	10	M14x1,5x20	13	400
430.2017	25	M14x1,5x20	13	1000

CHRYSLER OIL DRAIN PLUG

Oil drain plug, M14 x 1.5 x 24 mm

- External hexagon
- Without seal ring



Content				
430.1025	10	M14x1,5x24	13	370
430.2025	25	M14x1,5x24	13	925

Suitable seal ring:



Copper seal ring 20 x 14 x 1.5 mm

Content		Outer Ø mm	Inner Ø mm	Thickness mm	
430.1505	10	20.0	14.0	1,5	20
430.2505	25	20.0	14.0	1,5	50



Oil drain plug, M14 x 1.5 x 13 mm

- External hexagon
- Without seal ring



Content				
430.1026	10	M14x1,5x13	17	320
430.2026	25	M14x1,5x13	17	800

Suitable seal ring:



Japan seal ring 19 x 14 x 2.0 mm

Content		Outer Ø mm	Inner Ø mm	Thickness mm	
430.1518	10	19.0	14.0	2,0	20
430.2518	25	19.0	14.0	2,0	50

Oil drain plug, M14 x 1.5 x 17.5 mm

- External hexagon
- With seal ring



Content				
430.1027	10	M14x1,5x17,5	19	410
430.2027	25	M14x1,5x17,5	19	1025

Oil drain plug, 1/2" UNF x 1.25 x 20 mm

- External hexagon
- With seal ring



Content				
430.1028	10	1/2"UNFx1,25x20	16	440
430.2028	25	1/2"UNFx1,25x20	16	1100

Oil drain plug M16 x 1.25 L= 11.5 mm

- Internal hexagon
- Without seal ring



Content				
430.1029	10	M16x1,25x11,5	8	230
430.2029	25	M16x1,25x11,5	8	575

Suitable seal ring:



Copper seal ring 21 x 17 x 1.5 mm

Content		Outer Ø mm	Inner Ø mm	Thickness mm	
430.1534	10	21.0	17.0	1,5	15
430.2534	25	21.0	17.0	1,5	30

CITROËN OIL DRAIN PLUG

Oil drain plug M10 x 1.25 x 13 mm

- External hexagon
- Without seal ring



Content				
430.1015	10	M10x1,25x13	21	180
430.2015	25	M10x1,25x13	21	450

Suitable seal ring:



Copper seal ring 20 x 10 x 2.0 mm

Content		Outer Ø mm	Inner Ø mm	Thickness mm	
430.1508	10	20.0	10.0	2,0	40
430.2508	25	20.0	10.0	2,0	100

Oil drain plug, M14 x 1.5 x 13 mm

- External hexagon
- Without seal ring



Content		mm	mm	g
430.1026	10	M14x1,5x13	17	320
430.2026	25	M14x1,5x13	17	800

Suitable seal ring:



Japan seal ring 19 x 14 x 2.0 mm

Content		Outer Ø mm	Inner Ø mm	Thickness mm	g
430.1518	10	19.0	14.0	2.0	20
430.2518	25	19.0	14.0	2.0	50

Oil drain plug M16 x 1.5 L= 16 mm

- External hexagon
- Without seal ring



Content		mm	mm	g
430.1031	10	M16x1,5x16	21	390
430.2031	25	M16x1,5x16	21	975

Suitable seal ring:



Filling ring 22 x 16 x 2.0 mm

Content		Outer Ø mm	Inner Ø mm	Thickness mm	g
430.1521	10	22.0	16.0	2.0	10
430.2521	25	22.0	16.0	2.0	25

Oil drain plug, M20 x 1.5 x 12 mm

- Internal hexagon
- Without seal ring



Content		mm	mm	g
430.1034	10	M20x1,5x12	12	290
430.2034	25	M20x1,5x12	12	725

Suitable seal ring:



Megu seal ring 26 x 19 mm x 2.0 mm

Content		Outer Ø mm	Inner Ø mm	Thickness mm	g
430.1526	10	26.0	19.0	2.0	30
430.2526	25	26.0	19.0	2.0	75

DACIA OIL DRAIN PLUG

Oil drain plug M16 x 1.5 L= 13 mm

- Internal square
- Without seal ring



Content		mm	mm	g
430.1041	10	M16x1,5x13	8	220
430.2041	25	M16x1,5x13	8	550

Suitable seal ring:



Megu seal ring with centring ribs, 24 x 16 x 2.0 mm

Content		Outer Ø mm	Inner Ø mm	Thickness mm	g
430.1524	10	24.0	16.0	2.0	20
430.2524	25	24.0	16.0	2.0	50

DAEWOO OIL DRAIN PLUG

Oil drain plug, M14 x 1.5 x 13 mm

- External hexagon
- Without seal ring



Content		mm	mm	g
430.1026	10	M14x1,5x13	17	320
430.2026	25	M14x1,5x13	17	800

Suitable seal ring:



Copper seal ring 20 x 14 x 1.5 mm

Content		Outer Ø mm	Inner Ø mm	Thickness mm	g
430.1505	10	20.0	14.0	1.5	20
430.2505	25	20.0	14.0	1.5	50

DAIHATSU OIL DRAIN PLUG

Oil drain plug M12 x 1.25 x 13 mm

- External hexagon
- Without seal ring



Content		mm	mm	g
430.1012	10	M12x1,25x13	14	250
430.2012	25	M12x1,25x13	14	625

Suitable seal ring:



Soft seal ring 24 x 12 x 2.1 mm

Content		Outer Ø mm	Inner Ø mm	Thickness mm	g
430.1527	10	24.0	12.0	2.1	20
430.2527	25	24.0	12.0	2.1	50

FIAT OIL DRAIN PLUG

Oil drain plug, M18 x 1.5 x 27 mm

- Internal hexagon
- Without seal ring



Content	mm	mm	mm	g
430.1001	10	M18x1,5x27	8	570
430.2001	25	M18x1,5x27	8	1425

Suitable seal ring:



Copper seal ring 26 x 18 x 2.5 mm

Content	Outer Ø mm	Inner Ø mm	Thickness mm	g	
430.1506	10	26.0	18.0	2,5	30
430.2506	25	26.0	18.0	2,5	75

Oil drain plug, M18 x 1.5 x 27 mm

- Internal hexagon
- Without seal ring



Content	mm	mm	mm	g
430.1001	10	M18x1,5x27	8	570
430.2001	25	M18x1,5x27	8	1425

Suitable seal ring:



Megu seal ring 26 x 19 mm x 2.0 mm

Content	Outer Ø mm	Inner Ø mm	Thickness mm	g	
430.1526	10	26.0	19.0	2,0	30
430.2526	25	26.0	19.0	2,0	75

Oil drain plug M22 x 1.5 x 13.5 mm

- Internal hexagon
- Without seal ring



Content	mm	mm	mm	g
430.1002	10	M22x1,5x13,5	10	540
430.2002	25	M22x1,5x13,5	10	1350

Suitable seal ring:



Aluminium seal ring 30 x 22 x 1.5 mm

Content	Outer Ø mm	Inner Ø mm	Thickness mm	g	
430.1517	10	30.0	22.0	1,5	10
430.2517	25	30.0	22.0	1,5	25

Oil drain plug M22 x 1.5 x 16 mm

- External hexagon
- Without seal ring



Content	mm	mm	mm	g
430.1003	10	M22x1,5x16	18	430
430.2003	25	M22x1,5x16	18	1075

Suitable seal ring:



Aluminium seal ring 30 x 22 x 1.5 mm

Content	Outer Ø mm	Inner Ø mm	Thickness mm	g	
430.1517	10	30.0	22.0	1,5	10
430.2517	25	30.0	22.0	1,5	25

Oil drain plug M12 x 1.25 x 13 mm

- External hexagon
- Without seal ring



Content	mm	mm	mm	g
430.1331	10	M12x1,25x13	17	160
430.2331	25	M12x1,25x13	17	400

Suitable seal ring:



Copper seal ring 16 x 12 x 1.5 mm

Content	Outer Ø mm	Inner Ø mm	Thickness mm	g	
430.1538	10	16.0	12.0	1,5	10
430.2538	25	16.0	12.0	1,5	25

FORD OIL DRAIN PLUG

Oil drain plug M10 x 1.25 x 13 mm

- External hexagon
- Without seal ring



Content	mm	mm	mm	g
430.1015	10	M10x1,25x13	21	180
430.2015	25	M10x1,25x13	21	450

Suitable seal ring:



Copper seal ring 20 x 10 x 2.0 mm

Content	Outer Ø mm	Inner Ø mm	Thickness mm	g	
430.1508	10	20.0	10.0	2,0	40
430.2508	25	20.0	10.0	2,0	100

1
2
3
4
5
6
7
8
9
10
11
12
13
14
15
16
17
18
19
20
21
22
23
24
25
26

Oil drain plug, M14 x 1.5 x 17.5 mm

- External hexagon
- With seal ring



Content			
430.1027	10	M14x1,5x17,5	19
430.2027	25	M14x1,5x17,5	19

Oil drain plug, M14 x 1.5 x 16 mm

- External hexagon
- Without seal ring



Content			
430.1061	10	M14x1,5x16	13
430.2061	25	M14x1,5x16	13

Suitable seal ring:



Megu seal ring with centring ribs, 24 x 16 x 2.0 mm

Content		Outer Ø mm	Inner Ø mm	Thickness mm	
430.1525	10	24.0	16.0	2.0	20
430.2525	25	24.0	16.0	2.0	50



Oil drain plug, M14 x 1.25 x 13 mm

- Internal hexagon
- Without seal ring



Content			
430.1062	10	M14x1,25x13	8
430.2062	25	M14x1,25x13	8

Suitable seal ring:



Filling ring 20 x 14 x 2.0 mm

Content		Outer Ø mm	Inner Ø mm	Thickness mm	
430.1520	10	20.0	14.0	2.0	10
430.2520	25	20.0	14.0	2.0	25

Oil drain plug, M14 x 1.5 x 21 mm

- External hexagon
- Without seal ring



Content			
430.1064	10	M14x1,5x21	13
430.2064	25	M14x1,5x21	13

Suitable seal ring:



NBR seal ring 22 x 13 x 3.0 mm

Content		Outer Ø mm	Inner Ø mm	Thickness mm	
430.1530	10	22.0	13.0	3.0	10
430.2530	25	22.0	13.0	3.0	25

Oil drain plug M12 x 1.75 x 28.5 mm

- External hexagon
- With seal ring



Content			
430.1066	10	M12x1,75x28,5	15
430.2066	25	M12x1,75x28,5	15

Oil drain plug M12 x 1.75 x 21 mm

- External hexagon
- With seal ring



Content			
430.1068	10	M12x1,75x21	15
430.2068	25	M12x1,75x21	15

Oil drain plug, M14 x 1.25 x 12 mm

- Internal hexagon
- Without seal ring



Content			
430.1067	10	M14x1,25x12	8
430.2067	25	M14x1,25x12	8

Suitable seal ring:



Filling ring 20 x 14 x 2.0 mm

Content		Outer Ø mm	Inner Ø mm	Thickness mm	
430.1520	10	20.0	14.0	2.0	10
430.2520	25	20.0	14.0	2.0	25

GENERAL MOTORS OIL DRAIN PLUG

Oil drain plug M12 x 1.75 x 25 mm

- External hexagon
- Without seal ring



Content	mm	mm	mm	mm
430.1065	10	M12x1,75x25	15	400
430.2065	25	M12x1,75x25	15	1000

Suitable seal ring:



NBR seal ring 21 x 11 x 2.5 mm

Content	Outer Ø mm	Inner Ø mm	Thickness mm	mm
430.1529	10	21.0	11.0	2,5
430.2529	25	21.0	11.0	2,5

Oil drain plug M12 x 1.75 x 26 mm

- External hexagon
- Without seal ring



Content	mm	mm	mm	mm
430.1069	10	M12x1,75x26	15	360
430.2069	25	M12x1,75x26	15	900

Suitable seal ring:



Megu seal ring 18 x 12.7 x 1.5 mm

Content	Outer Ø mm	Inner Ø mm	Thickness mm	mm
430.1537	10	18.0	12.7	1,5
430.2537	25	18.0	12.7	1,5

HONDO OIL DRAIN PLUG

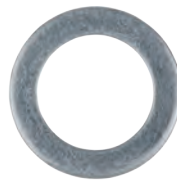
Oil drain plug, M14 x 1.5 x 11 mm

- External hexagon
- Without seal ring



Content	mm	mm	mm	mm
430.1071	10	M14x1,5x11	17	330
430.2071	25	M14x1,5x11	17	825

Suitable seal ring:



Aluminium seal ring 22 x 14 x 2.0 mm

Content	Outer Ø mm	Inner Ø mm	Thickness mm	mm
430.1514	10	22.0	14.0	2,0
430.2514	25	22.0	14.0	2,0

HYUNDAI OIL DRAIN PLUG

Oil drain plug, M14 x 1.5 x 13 mm

- External hexagon
- Without seal ring



Content	mm	mm	mm	mm
430.1026	10	M14x1,5x13	17	320
430.2026	25	M14x1,5x13	17	800

Suitable seal ring:



Japan seal ring 19 x 14 x 2.0 mm

Content	Outer Ø mm	Inner Ø mm	Thickness mm	mm
430.1518	10	19.0	14.0	2,0
430.2518	25	19.0	14.0	2,0

Oil drain plug, M14 x 1.5 x 23 mm

- External hexagon
- Without seal ring



Content	mm	mm	mm	mm
430.1077	10	M14x1,5x23	17	450
430.2077	25	M14x1,5x23	17	1125

Suitable seal ring:



Japan seal ring 19 x 14 x 2.0 mm

Content	Outer Ø mm	Inner Ø mm	Thickness mm	mm
430.1518	10	19.0	14.0	2,0
430.2518	25	19.0	14.0	2,0

ISUZU OIL DRAIN PLUG

Oil drain plug, M18 x 1.5 x 21 mm

- External hexagon
- Without seal ring



Content	mm	mm	mm	mm
430.1081	10	M18x1,5x21	13	450
430.2081	25	M18x1,5x21	13	1125

Suitable seal ring:



Megu seal ring 26 x 19 mm x 2.0 mm

Content	Outer Ø mm	Inner Ø mm	Thickness mm	mm
430.1526	10	26.0	19.0	2,0
430.2526	25	26.0	19.0	2,0

JAGUAR OIL DRAIN PLUG

Oil drain plug, M14 x 1.5 x 21 mm

- External hexagon
- Without seal ring



Content		mm	mm	g
430.1064	10	M14x1,5x21	13	570
430.2064	25	M14x1,5x21	13	1425

Suitable seal ring:



NBR seal ring 22 x 13 x 3.0 mm

Content		Outer Ø mm	Inner Ø mm	Thickness mm	g
430.1530	10	22.0	13.0	3.0	10
430.2530	25	22.0	13.0	3.0	25

JEEP OIL DRAIN PLUG

Oil drain plug M12 x 1.5 x 13 mm

- External hexagon
- Without seal ring



Content		mm	mm	g
430.1014	10	M12x1,5x13	17	200
430.2014	25	M12x1,5x13	17	500

Suitable seal ring:



Copper seal ring 17 x 12 x 1.5 mm

Content		Outer Ø mm	Inner Ø mm	Thickness mm	g
430.1502	10	17.0	12.0	1.5	10
430.2502	25	17.0	12.0	1.5	25

Oil drain plug, M14 x 1.5 x 17.5 mm

- External hexagon
- With seal ring



Content		mm	mm	g
430.1027	10	M14x1,5x17,5	19	410
430.2027	25	M14x1,5x17,5	19	1025

KIA OIL DRAIN PLUG

Oil drain plug, M14 x 1.5 x 13 mm

- External hexagon
- Without seal ring



Content		mm	mm	g
430.1026	10	M14x1,5x13	17	320
430.2026	25	M14x1,5x13	17	800

Suitable seal ring:



Japan seal ring 19 x 14 x 2.0 mm

Content		Outer Ø mm	Inner Ø mm	Thickness mm	g
430.1518	10	19.0	14.0	2.0	20
430.2518	25	19.0	14.0	2.0	50

LADA OIL DRAIN PLUG

Oil drain plug M22 x 1.5 x 10 mm

- Internal hexagon
- Bevelled
- Seal ring not necessary



Content		mm	mm	g
430.1101	10	M22x1,5x10	10	220
430.2101	25	M22x1,5x10	10	550

LANCIA OIL DRAIN PLUG

Oil drain plug M12 x 1.25 x 13 mm

- External hexagon
- Without seal ring



Content		mm	mm	g
430.1331	10	M12x1,25x13	17	160
430.2331	25	M12x1,25x13	17	400

Suitable seal ring:



Copper seal ring 16 x 12 x 1.5 mm

Content		Outer Ø mm	Inner Ø mm	Thickness mm	g
430.1538	10	16.0	12.0	1.5	10
430.2538	25	16.0	12.0	1.5	25

Oil drain plug M22 x 1.5 x 16 mm

- External hexagon
- Without seal ring



Content		mm	mm	g
430.1003	10	M22x1,5x16	18	430
430.2003	25	M22x1,5x16	18	1075

Suitable seal ring:



Aluminium seal ring 30 x 22 x 1.5 mm

Content		Outer Ø mm	Inner Ø mm	Thickness mm	g
430.1517	10	30.0	22.0	1.5	10
430.2517	25	30.0	22.0	1.5	25

LAND ROVER OIL DRAIN PLUG

Oil drain plug M10 x 1.25 x 13 mm

- External hexagon
- Without seal ring



Content		1000 mm	mm	g
430.1015	10	M10x1,25x13	21	180
430.2015	25	M10x1,25x13	21	450

Suitable seal ring:



Copper seal ring 20 x 10 x 2.0 mm

Content		Outer Ø mm	Inner Ø mm	Thickness mm	g
430.1508	10	20.0	10.0	2.0	40
430.2508	25	20.0	10.0	2.0	100

Oil drain plug, M14 x 1.5 x 16 mm

- External hexagon
- Without seal ring



Content		1000 mm	mm	g
430.1061	10	M14x1,5x16	13	340
430.2061	25	M14x1,5x16	13	850

Suitable seal ring:



Megu seal ring with centring ribs, 24 x 16 x 2.0 mm

Content		Outer Ø mm	Inner Ø mm	Thickness mm	g
430.1525	10	24.0	16.0	2.0	20
430.2525	25	24.0	16.0	2.0	50

LEXUS OIL DRAIN PLUG

Oil drain plug M12 x 1.25 x 13 mm

- External hexagon
- Without seal ring



Content		1000 mm	mm	g
430.1012	10	M12x1,25x13	14	250
430.2012	25	M12x1,25x13	14	625

Suitable seal ring:



Soft seal ring 24 x 12 x 2.1 mm

Content		Outer Ø mm	Inner Ø mm	Thickness mm	g
430.1527	10	24.0	12.0	2,1	20
430.2527	25	24.0	12.0	2,1	50

MAZDA OIL DRAIN PLUG

Oil drain plug M10 x 1.25 x 13 mm

- External hexagon
- Without seal ring



Content		1000 mm	mm	g
430.1015	10	M10x1,25x13	21	180
430.2015	25	M10x1,25x13	21	450

Suitable seal ring:



Copper seal ring 20 x 10 x 2.0 mm

Content		Outer Ø mm	Inner Ø mm	Thickness mm	g
430.1508	10	20.0	10.0	2.0	40
430.2508	25	20.0	10.0	2.0	100

Oil drain plug M12 x 1.75 x 28.5 mm

- External hexagon
- With seal ring



Content		1000 mm	mm	g
430.1066	10	M12x1,75x28,5	15	450
430.2066	25	M12x1,75x28,5	15	1125

Oil drain plug, M14 x 1.5 x 10 mm

- External hexagon
- Without seal ring



Content		1000 mm	mm	g
430.1117	10	M14x1,5x10	19	280
430.2117	25	M14x1,5x10	19	700

Suitable seal ring:



Copper seal ring 20 x 14 x 1.5 mm

Content		Outer Ø mm	Inner Ø mm	Thickness mm	g
430.1505	10	20.0	14.0	1,5	20
430.2505	25	20.0	14.0	1,5	50

Oil drain plug M12 x 1.75 x 21 mm

- External hexagon
- With seal ring



Content		1000 mm	mm	g
430.1068	10	M12x1,75x21	15	380
430.2068	25	M12x1,75x21	15	950

MERCEDES BENZ OIL DRAIN PLUG

Oil drain plug M12 x 1.5 x 13 mm

- External hexagon
- Without seal ring



	Content	1000 mm	mm	g
430.1014	10	M12x1,5x13	17	200
430.2014	25	M12x1,5x13	17	500

Suitable seal ring:



Copper seal ring 17 x 12 x 1.5 mm

	Content	Outer Ø mm	Inner Ø mm	Thickness mm	g
430.1502	10	17.0	12.0	1,5	10
430.2502	25	17.0	12.0	1,5	25

Oil drain plug, M14 x 1.5 x 24 mm

- External hexagon
- Without seal ring



	Content	1000 mm	mm	g
430.1025	10	M14x1,5x24	13	370
430.2025	25	M14x1,5x24	13	925

Suitable seal ring:



Copper seal ring 20 x 14 x 1.5 mm

	Content	Outer Ø mm	Inner Ø mm	Thickness mm	g
430.1505	10	20.0	14.0	1,5	20
430.2505	25	20.0	14.0	1,5	50

Oil drain plug, M14 x 1.5 x 13 mm

- External hexagon
- Without seal ring



	Content	1000 mm	mm	g
430.1026	10	M14x1,5x13	17	320
430.2026	25	M14x1,5x13	17	800

Suitable seal ring:



Japan seal ring 19 x 14 x 2.0 mm

	Content	Outer Ø mm	Inner Ø mm	Thickness mm	g
430.1518	10	19.0	14.0	2,0	20
430.2518	25	19.0	14.0	2,0	50

MITSUBISHI OIL DRAIN PLUG

Oil drain plug, M14 x 1.5 x 13 mm

- External hexagon
- Without seal ring



	Content	1000 mm	mm	g
430.1026	10	M14x1,5x13	17	320
430.2026	25	M14x1,5x13	17	800

Suitable seal ring:



Japan seal ring 19 x 14 x 2.0 mm

	Content	Outer Ø mm	Inner Ø mm	Thickness mm	g
430.1518	10	19.0	14.0	2,0	20
430.2518	25	19.0	14.0	2,0	50

NISSAN OIL DRAIN PLUG

Oil drain plug M12 x 1.25 x 13 mm

- External hexagon
- Without seal ring



	Content	1000 mm	mm	g
430.1012	10	M12x1,25x13	14	250
430.2012	25	M12x1,25x13	14	625

Suitable seal ring:



Sleeve 17 x 12 x 3.0 mm

	Content	Outer Ø mm	Inner Ø mm	Thickness mm	g
430.1509	10	17.0	12.0	3,0	10
430.2509	25	17.0	12.0	3,0	25

Oil drain plug M16 x 1.5 L= 13 mm

- Internal square
- Without seal ring



	Content	1000 mm	mm	g
430.1041	10	M16x1,5x13	8	220
430.2041	25	M16x1,5x13	8	550

Suitable seal ring:



Megu seal ring with centring ribs, 24 x 16 x 2.0 mm

	Content	Outer Ø mm	Inner Ø mm	Thickness mm	g
430.1524	10	24.0	16.0	2,0	20
430.2524	25	24.0	16.0	2,0	50

Oil drain plug M16 JIS x 1.25 L= 11 mm

- External hexagon
- Without seal ring



Content				
430.1043	10	M16JISx1,25x11	22	430
430.2043	25	M16JISx1,25x11	22	1075

Suitable seal ring:



Seal ring, sleeve 21 x 15 x 2.0 mm

Content		Outer Ø mm	Inner Ø mm	Thickness mm	
430.1531	10	21.0	15.0	2,0	10
430.2531	25	21.0	15.0	2,0	25

OPEL OIL DRAIN PLUG

Oil drain plug M22 x 1.5 x 13.5 mm

- Internal hexagon
- Without seal ring



Content				
430.1002	10	M22x1,5x13,5	10	540
430.2002	25	M22x1,5x13,5	10	1350

Suitable seal ring:



Aluminium seal ring 30 x 22 x 1.5 mm

Content		Outer Ø mm	Inner Ø mm	Thickness mm	
430.1517	10	30.0	22.0	1,5	10
430.2517	25	30.0	22.0	1,5	25

Oil drain plug, M18 x 1.5 x 21 mm

- External hexagon
- Without seal ring



Content				
430.1081	10	M18x1,5x21	13	450
430.2081	25	M18x1,5x21	13	1125

Suitable seal ring:



Megu seal ring 26 x 19 mm x 2.0 mm

Content		Outer Ø mm	Inner Ø mm	Thickness mm	
430.1526	10	26.0	19.0	2,0	30
430.2526	25	26.0	19.0	2,0	75

Oil drain plug, M14 x 1.5 x 10.5 mm

- Torx
- With seal ring



Content				
430.1137	10	M14x1,5x10,5	T45	240
430.2137	25	M14x1,5x10,5	T45	600

Suitable seal ring:



NBR seal ring 22 x 18 x 2.0 mm

Content		Outer Ø mm	Inner Ø mm	Thickness mm	
430.1528	10	22.0	18.0	2,0	10
430.2528	25	22.0	18.0	2,0	25

Oil drain plug, M14 x 1.5 x 12 mm

- External hexagon
- Without seal ring



Content				
430.1136	10	M14x1,5x12	19	270
430.2136	25	M14x1,5x12	19	675

Suitable seal ring:



Oil drain plug M12 x 1.75 x 25 mm

- External hexagon
- Without seal ring



Content				
430.1138	10	M12x1,75x25	15	410
430.2138	25	M12x1,75x25	15	1025

Suitable seal ring:



NBR seal ring 21 x 11 x 2.5 mm

Content		Outer Ø mm	Inner Ø mm	Thickness mm	
430.1529	10	21.0	11.0	2,5	10
430.2529	25	21.0	11.0	2,5	25

Copper seal ring 20 x 14 x 1.5 mm

Content		Outer Ø mm	Inner Ø mm	Thickness mm	
430.1505	10	20.0	14.0	1,5	20
430.2505	25	20.0	14.0	1,5	50

PEUGEOT OIL DRAIN PLUG

Oil drain plug M10 x 1.25 x 13 mm

- External hexagon
- Without seal ring



	Content	$\frac{1000}{mm}$	$\frac{mm}{mm}$	$\frac{g}{g}$
430.1015	10	M10x1,25x13	21	180
430.2015	25	M10x1,25x13	21	450

Suitable seal ring:



Copper seal ring 20 x 10 x 2.0 mm

	Content	Outer Ø mm	Inner Ø mm	Thickness mm	$\frac{g}{g}$
430.1508	10	20.0	10.0	2.0	40
430.2508	25	20.0	10.0	2.0	100

Oil drain plug, M20 x 1.5 x 12 mm

- Internal hexagon
- Without seal ring



	Content	$\frac{1000}{mm}$	$\frac{mm}{mm}$	$\frac{g}{g}$
430.1034	10	M20x1,5x12	12	290
430.2034	25	M20x1,5x12	12	725

Suitable seal ring:



Filling ring 26 x 20 x 2.0 mm

	Content	Outer Ø mm	Inner Ø mm	Thickness mm	$\frac{g}{g}$
430.1523	10	26.0	20.0	2.0	10
430.2523	25	26.0	20.0	2.0	25

Oil drain plug M16 x 1.5 L= 13 mm

- Internal square
- Without seal ring



	Content	$\frac{1000}{mm}$	$\frac{mm}{mm}$	$\frac{g}{g}$
430.1041	10	M16x1,5x13	8	220
430.2041	25	M16x1,5x13	8	550

Suitable seal ring:



Filling ring 22 x 16 x 2.0 mm

	Content	Outer Ø mm	Inner Ø mm	Thickness mm	$\frac{g}{g}$
430.1521	10	22.0	16.0	2.0	10
430.2521	25	22.0	16.0	2.0	25

Oil drain plug, M14 x 1.25 x 13 mm

- Internal hexagon
- Without seal ring



	Content	$\frac{1000}{mm}$	$\frac{mm}{mm}$	$\frac{g}{g}$
430.1062	10	M14x1,25x13	8	230
430.2062	25	M14x1,25x13	8	575

Suitable seal ring:



Filling ring 20 x 14 x 2.0 mm

	Content	Outer Ø mm	Inner Ø mm	Thickness mm	$\frac{g}{g}$
430.1520	10	20.0	14.0	2.0	10
430.2520	25	20.0	14.0	2.0	25

PORSCHE OIL DRAIN PLUG

Oil drain plug, M20 x 1.5 x 14 mm

- External hexagon
- Without seal ring



	Content	$\frac{1000}{mm}$	$\frac{mm}{mm}$	$\frac{g}{g}$
430.1226	10	M20x1,5x14	15	550
430.2226	25	M20x1,5x14	15	1375

Suitable seal ring:



Aluminium seal ring 27 x 22 x 1.5 mm

	Content	Outer Ø mm	Inner Ø mm	Thickness mm	$\frac{g}{g}$
430.1533	10	27.0	22.0	1.5	10
430.2533	25	27.0	22.0	1.5	25

Oil drain plug, M18 x 1.5 x 11 mm

- Internal hexagon
- Without seal ring



	Content	$\frac{1000}{mm}$	$\frac{mm}{mm}$	$\frac{g}{g}$
430.1227	10	M18x1,5x11	8	110
430.2227	25	M18x1,5x11	8	275

Suitable seal ring:



Aluminium seal ring 24 x 18 x 1.5 mm

	Content	Outer Ø mm	Inner Ø mm	Thickness mm	$\frac{g}{g}$
430.1515	10	24.0	18.0	1.5	10
430.2515	25	24.0	18.0	1.5	25

Oil drain plug, M26 x 1.5 x 11 mm

- External hexagon
- Without seal ring



Content				
		mm	mm	g
430.1228	10	M26x1,5x11	22	680
430.2228	25	M26x1,5x11	22	1700

Suitable seal ring:



Aluminium seal ring 32 x 26 x 2.0 mm

Content		Outer Ø	Inner Ø	Thickness	
		mm	mm	mm	g
430.1536	10	32.0	26.0	2.0	10
430.2536	25	32.0	26.0	2.0	25

RENAULT OIL DRAIN PLUG

Oil drain plug M22 x 1.5 x 13.5 mm

- Internal hexagon
- Without seal ring



Content				
		mm	mm	g
430.1002	10	M22x1,5x13,5	10	540
430.2002	25	M22x1,5x13,5	10	1350

Suitable seal ring:



Aluminium seal ring 30 x 22 x 1.5 mm

Content		Outer Ø	Inner Ø	Thickness	
		mm	mm	mm	g
430.1517	10	30.0	22.0	1.5	10
430.2517	25	30.0	22.0	1.5	25

Oil drain plug M16 x 1.5 L= 13 mm

- Internal square
- Without seal ring



Content				
		mm	mm	g
430.1041	10	M16x1,5x13	8	220
430.2041	25	M16x1,5x13	8	550

Suitable seal ring:



Filling ring 22 x 16 x 2.0 mm

Content		Outer Ø	Inner Ø	Thickness	
		mm	mm	mm	g
430.1521	10	22.0	16.0	2.0	10
430.2521	25	22.0	16.0	2.0	25

Oil drain plug M16 x 1.5 L= 13 mm

- Internal square
- Without seal ring



Content				
		mm	mm	g
430.1158	10	M16x1,5x13	8	350
430.2158	25	M16x1,5x13	8	875

Suitable seal ring:



Filling ring 22 x 16 x 2.0 mm

Content		Outer Ø	Inner Ø	Thickness	
		mm	mm	mm	g
430.1521	10	22.0	16.0	2.0	10
430.2521	25	22.0	16.0	2.0	25

Oil drain plug M16 x 1.5 L= 24 mm

- Internal square
- Without seal ring



Content				
		mm	mm	g
430.1157	10	M16x1,5x24	8	310
430.2157	25	M16x1,5x24	8	775

Suitable seal ring:



Filling ring 22 x 16 x 2.0 mm

Content		Outer Ø	Inner Ø	Thickness	
		mm	mm	mm	g
430.1521	10	22.0	16.0	2.0	10
430.2521	25	22.0	16.0	2.0	25

Oil drain plug, M18 x 1.5 x 16 mm

- Internal square
- Without seal ring



Content				
		mm	mm	g
430.1159	10	M18x1,5x16	8	350
430.2159	25	M18x1,5x16	8	875

Suitable seal ring:



Filling ring 24 x 18 x 2.0 mm

Content		Outer Ø	Inner Ø	Thickness	
		mm	mm	mm	g
430.1522	10	24.0	18.0	2.0	10
430.2522	25	24.0	18.0	2.0	25

Oil drain plug, M18 x 1.5 x 22 mm

- Internal square
- Without seal ring



Content				
430.1161	10	M18x1,5x22	8	410
430.2161	25	M18x1,5x22	8	1025

Suitable seal ring:



Filling ring 24 x 18 x 2.0 mm

Content		Outer Ø mm	Inner Ø mm	Thickness mm	
430.1522	10	24.0	18.0	2.0	10
430.2522	25	24.0	18.0	2.0	25

ROVER OIL DRAIN PLUG

Oil drain plug M12 x 1.5 x 18 mm

- External hexagon
- Without seal ring



Content				
430.1011	10	M12x1,5x18	17	240
430.2011	25	M12x1,5x18	17	600

Suitable seal ring:



Aluminium seal ring 17 x 12 x 1.5 mm

Content		Outer Ø mm	Inner Ø mm	Thickness mm	
430.1512	10	17.0	12.0	1.5	10
430.2512	25	17.0	12.0	1.5	25

ROVER MINI OIL DRAIN PLUG

Oil drain plug UNC 5/8" x 11G x 16 mm

- External hexagon
- Without seal ring



Content				
430.1171	10	UNC 5/8"x11Gx16	24	480
430.2171	25	UNC 5/8"x11Gx16	24	1200

Suitable seal ring:



Copper seal ring 25.5 x 16 x 1.6 mm

Content		Outer Ø mm	Inner Ø mm	Thickness mm	
430.1511	10	25.5	16.0	1.6	40
430.2511	25	25.5	16.0	1.6	100

SAAB OIL DRAIN PLUG

Oil drain plug M22 x 1.5 x 13.5 mm

- Internal hexagon
- Without seal ring



Content				
430.1002	10	M22x1,5x13,5	10	540
430.2002	25	M22x1,5x13,5	10	1350

Suitable seal ring:



Aluminium seal ring 30 x 22 x 1.5 mm

Content		Outer Ø mm	Inner Ø mm	Thickness mm	
430.1517	10	30.0	22.0	1.5	10
430.2517	25	30.0	22.0	1.5	25

Oil drain plug, M14 x 1.5 x 16 mm

- External hexagon
- Without seal ring



Content				
430.1061	10	M14x1,5x16	13	340
430.2061	25	M14x1,5x16	13	850

Suitable seal ring:



Copper seal ring 24 x 15 x 2.0 mm

Content		Outer Ø mm	Inner Ø mm	Thickness mm	
430.1510	10	24.0	15.0	2.0	40
430.2510	25	24.0	15.0	2.0	100

Oil drain plug, M14 x 1.5 x 21 mm

- External hexagon
- Without seal ring



Content				
430.1064	10	M14x1,5x21	13	570
430.2064	25	M14x1,5x21	13	1425

Suitable seal ring:



NBR seal ring 22 x 13 x 3.0 mm

Content		Outer Ø mm	Inner Ø mm	Thickness mm	
430.1530	10	22.0	13.0	3.0	10
430.2530	25	22.0	13.0	3.0	25

Oil drain plug, M18 x 1.5 x 21 mm

- External hexagon
- Without seal ring



Content	mm	mm	mm	g
430.1081	10	M18x1,5x21	13	450
430.2081	25	M18x1,5x21	13	1125

Suitable seal ring:



Megu seal ring 26 x 19 mm x 2.0 mm

Content	Outer Ø mm	Inner Ø mm	Thickness mm	g	
430.1526	10	26.0	19.0	2,0	30
430.2526	25	26.0	19.0	2,0	75

Oil drain plug, M14 x 1.5 x 10.5 mm

- Torx
- With seal ring



Content	mm	mm	mm	g
430.1137	10	M14x1,5x10,5	T45	240
430.2137	25	M14x1,5x10,5	T45	600

Suitable seal ring:



NBR seal ring 22 x 18 x 2.0 mm

Content	Outer Ø mm	Inner Ø mm	Thickness mm	g	
430.1528	10	22.0	18.0	2,0	10
430.2528	25	22.0	18.0	2,0	25

Oil drain plug M12 x 1.75 x 25 mm

- External hexagon
- Without seal ring



Content	mm	mm	mm	g
430.1138	10	M12x1,75x25	15	410
430.2138	25	M12x1,75x25	15	1025

Suitable seal ring:



NBR seal ring 21 x 11 x 2.5 mm

Content	Outer Ø mm	Inner Ø mm	Thickness mm	g	
430.1529	10	21.0	11.0	2,5	10
430.2529	25	21.0	11.0	2,5	25

SEAT OIL DRAIN PLUG

Oil drain plug, M14 x 1.5 x 17.5 mm

- External hexagon
- With seal ring



Content	mm	mm	mm	g
430.1027	10	M14x1,5x17,5	19	410
430.2027	25	M14x1,5x17,5	19	1025

ŠKODA OIL DRAIN PLUG

Oil drain plug, M14 x 1.5 x 17.5 mm

- External hexagon
- With seal ring



Content	mm	mm	mm	g
430.1027	10	M14x1,5x17,5	19	410
430.2027	25	M14x1,5x17,5	19	1025

SMART 451 OIL DRAIN PLUG

Oil drain plug M22 x 1.5 x 14 mm

- External hexagon
- Without seal ring



Content	mm	mm	mm	g
430.1187	10	M22x1,5x14	24	810
430.2187	25	M22x1,5x14	24	2025

Suitable seal ring:



Copper seal ring 33 x 22 x 1.0 mm

Content	Outer Ø mm	Inner Ø mm	Thickness mm	g	
430.1501	10	33.0	22.0	1,0	40
430.2501	25	33.0	22.0	1,0	100



SMART FOR FOUR OIL DRAIN PLUG

Oil drain plug, M14 x 1.5 x 24 mm

- External hexagon
- Without seal ring



Content	mm	mm	mm	g
430.1025	10	M14x1,5x24	13	370
430.2025	25	M14x1,5x24	13	925

Suitable seal ring:



Copper seal ring 18 x 14 x 1.5 mm

Content	Outer Ø mm	Inner Ø mm	Thickness mm	g	
430.1503	10	18.0	14.0	1,5	10
430.2503	25	18.0	14.0	1,5	25

SUBARU OIL DRAIN PLUG

Oil drain plug, M14 x 1.5 x 13 mm

- External hexagon
- Without seal ring



Content	mm	mm	mm	g
430.1026	10	M14x1,5x13	17	320
430.2026	25	M14x1,5x13	17	800

Suitable seal ring:



Japan seal ring 19 x 14 x 2.0 mm

Content	Outer Ø mm	Inner Ø mm	Thickness mm	g	
430.1518	10	19.0	14.0	2,0	20
430.2518	25	19.0	14.0	2,0	50

Oil drain plug, M20 x 1.5 x 15 mm

- External hexagon
- Without seal ring



Content	mm	mm	mm	g
430.1191	10	M20x1,5x15	17	620
430.2191	25	M20x1,5x15	17	1550

Suitable seal ring:



Japan seal ring 26 x 20 x 2.0 mm

Content	Outer Ø mm	Inner Ø mm	Thickness mm	g	
430.1519	10	26.0	20.0	2,0	20
430.2519	25	26.0	20.0	2,0	50

SUZUKI OIL DRAIN PLUG

Oil drain plug, M14 x 1.5 x 13 mm

- External hexagon
- Without seal ring



Content	mm	mm	mm	g
430.1026	10	M14x1,5x13	17	320
430.2026	25	M14x1,5x13	17	800

Suitable seal ring:



Copper seal ring 20 x 14 x 1.5 mm

Content	Outer Ø mm	Inner Ø mm	Thickness mm	g	
430.1505	10	20.0	14.0	1,5	20
430.2505	25	20.0	14.0	1,5	50

Oil drain plug, M14 x 1.5 x 10.5 mm

- Torx
- With seal ring



Content	mm	mm	mm	g
430.1137	10	M14x1,5x10,5	T45	240
430.2137	25	M14x1,5x10,5	T45	600

Suitable seal ring:



NBR seal ring 22 x 18 x 2.0 mm

Content	Outer Ø mm	Inner Ø mm	Thickness mm	g	
430.1528	10	22.0	18.0	2,0	10
430.2528	25	22.0	18.0	2,0	25

TOYOTA OIL DRAIN PLUG

Oil drain plug M12 x 1.25 x 13 mm

- External hexagon
- Without seal ring



Content	mm	mm	mm	g
430.1012	10	M12x1,25x13	14	250
430.2012	25	M12x1,25x13	14	625

Suitable seal ring:



Soft seal ring 24 x 12 x 2.1 mm

Content	Outer Ø mm	Inner Ø mm	Thickness mm	g	
430.1527	10	24.0	12.0	2,1	20
430.2527	25	24.0	12.0	2,1	50

Oil drain plug, M18 x 1.5 x 11.5 mm

- External hexagon
- Without seal ring



Content				
		mm	mm	g
430.1018	10	M18x1,5x11,5	24	590
430.2018	25	M18x1,5x11,5	24	1475

Suitable seal ring:



Soft seal ring 28 x 18 x 2.0 mm

Content		Outer Ø	Inner Ø	Thickness	
		mm	mm	mm	g
430.1532	10	28.0	18.0	2.0	15
430.2532	25	28.0	18.0	2.0	35

VOLVO OIL DRAIN PLUG

Oil drain plug M10 x 1.25 x 13 mm

- External hexagon
- Without seal ring



Content				
		mm	mm	g
430.1015	10	M10x1,25x13	21	180
430.2015	25	M10x1,25x13	21	450

Suitable seal ring:



Copper seal ring 20 x 10 x 2.0 mm

Content		Outer Ø	Inner Ø	Thickness	
		mm	mm	mm	g
430.1508	10	20.0	10.0	2.0	40
430.2508	25	20.0	10.0	2.0	100

Oil drain plug, M14 x 1.5 x 13 mm

- External hexagon
- Without seal ring



Content				
		mm	mm	g
430.1026	10	M14x1,5x13	17	320
430.2026	25	M14x1,5x13	17	800

Suitable seal ring:



Japan seal ring 19 x 14 x 2.0 mm

Content		Outer Ø	Inner Ø	Thickness	
		mm	mm	mm	g
430.1518	10	19.0	14.0	2.0	20
430.2518	25	19.0	14.0	2.0	50

Oil drain plug M16 x 1.5 L= 13 mm

- Internal square
- Without seal ring



Content				
		mm	mm	g
430.1041	10	M16x1,5x13	8	220
430.2041	25	M16x1,5x13	8	550

Suitable seal ring:



Filling ring 22 x 16 x 2.0 mm

Content		Outer Ø	Inner Ø	Thickness	
		mm	mm	mm	g
430.1521	10	22.0	16.0	2.0	10
430.2521	25	22.0	16.0	2.0	25

Oil drain plug, M14 x 1.5 x 21 mm

- External hexagon
- Without seal ring



Content				
		mm	mm	g
430.1064	10	M14x1,5x21	13	570
430.2064	25	M14x1,5x21	13	1425

Suitable seal ring:



NBR seal ring 22 x 13 x 3.0 mm

Content		Outer Ø	Inner Ø	Thickness	
		mm	mm	mm	g
430.1530	10	22.0	13.0	3.0	10
430.2530	25	22.0	13.0	3.0	25

Oil drain plug, M18 x 1.5 x 11 mm

- External hexagon
- Without seal ring



Content				
		mm	mm	g
430.1208	10	M18x1,5x11	25	460
430.2208	25	M18x1,5x11	25	1150

Suitable seal ring:



Copper seal ring 26 x 19 x 2.0 mm

Content		Outer Ø	Inner Ø	Thickness	
		mm	mm	mm	g
430.1507	10	26.0	19.0	2.0	40
430.2507	25	26.0	19.0	2.0	100

Oil drain plug, M18 x 1.5 x 18 mm

- External hexagon
- Without seal ring



Content				
430.1211	10	M18x1,5x18	17	540
430.2211	25	M18x1,5x18	17	1350

Suitable seal ring:



Aluminium seal ring 24 x 18 x 1.5 mm

Content		Outer Ø mm	Inner Ø mm	Thickness mm	
430.1515	10	24.0	18.0	1.5	10
430.2515	25	24.0	18.0	1.5	25

Oil drain plug, M14 x 1.25 x 12 mm

- Internal hexagon
- Without seal ring



Content				
430.1067	10	M14x1,25x12	8	220
430.2067	25	M14x1,25x12	8	550

Suitable seal ring:



Filling ring 20 x 14 x 2.0 mm

Content		Outer Ø mm	Inner Ø mm	Thickness mm	
430.1520	10	20.0	14.0	2.0	10
430.2520	25	20.0	14.0	2.0	25

VOLKSWAGEN OIL DRAIN PLUG

Oil drain plug, M14 x 1.5 x 17.5 mm

- External hexagon
- With seal ring



Content				
430.1027	10	M14x1,5x17,5	19	410
430.2027	25	M14x1,5x17,5	19	1025

Oil drain plug, M14 x 1.5 x 12 mm

- External hexagon
- Without seal ring



Content				
430.1136	10	M14x1,5x12	19	270
430.2136	25	M14x1,5x12	19	675

Suitable seal ring:



Copper seal ring 20 x 14 x 1.5 mm

Content		Outer Ø mm	Inner Ø mm	Thickness mm	
430.1505	10	20.0	14.0	1.5	20
430.2505	25	20.0	14.0	1.5	50

Oil drain plug, M14 x 1.5 x 22 mm

- External hexagon
- Without seal ring



Content				
430.1222	10	M14x1,5x22	19	360
430.2222	25	M14x1,5x22	19	900

Suitable seal ring:



Filling ring 20 x 14 x 2.0 mm

Content		Outer Ø mm	Inner Ø mm	Thickness mm	
430.1520	10	20.0	14.0	2.0	10
430.2520	25	20.0	14.0	2.0	25

Oil drain plug, M26 x 1.5 x 16 mm

- External hexagon
- Without seal ring



Content				
430.1139	10	M26x1,5x16	17	780
430.2139	25	M26x1,5x16	17	1950

Suitable seal ring:



Copper seal ring 31 x 26 x 2.0 mm

Content		Outer Ø mm	Inner Ø mm	Thickness mm	
430.1535	10	31.0	26.0	2.0	30
430.2535	25	31.0	26.0	2.0	75



OIL SUMP TOOL

Oil sump socket for hexagon-screws with ball end

- Ideally suited for assembly and disassembly of securing screws on the oil sump
- Ball end hexagon socket
- Internal square drive to DIN 3120/ISO 1174 with ball reception
- Extra-long design
- Matt finish
- Chrome vanadium

Application range: Volkswagen T4, etc.



	3/8"	mm	Ø mm	L mm	Weight
917.3858		5,0	17,5	215,0	79

Oil sump socket for RIBE screws

- Ideally suited for assembly and disassembly of securing screws on the oil sump
- RIBE profile
- Internal square drive to DIN 3120/ISO 1174 with ball reception
- Extra-long design
- With sand blasted bit insert
- Matt finish
- Chrome vanadium

Application range: Opel, etc.



	3/8"	mm	Ø mm	L mm	Weight
917.3859		7,0	17,5	210,0	103
917.3866		8,0	17,5	265,0	127

CHROMEplus® T handle RIBE profile extra long

- Extra-long design
- For assembly and disassembly of the oil sump
- Without this wrench the oil sump must be removed from the transmission on Opel vehicles
- With 2 component handle
- Continuous hardened
- Chrome plated and mirror polished
- Special steel

Application range: for assembly and disassembly of the oil sump on Opel, Fiat, Alfa Romeo, Suzuki and Saab vehicles



		L1 mm	L2 mm	Weight
158.5121	M4	280,0	250,0	100
158.5122	M5	280,0	250,0	100
158.5123	M6	280,0	250,0	100
158.5124	M7	280,0	250,0	130
158.5125	M8	280,0	250,0	145
158.5126	M9	280,0	250,0	145
158.5127	M10	290,0	250,0	316

Oil sump and cleaning set

- Ideally suited for removing tough oil sumps
- Light, easy and correct usage
- Not dependant on direction
- Includes cleaning disks with holder
- With two different cutting knives
- Robust design
- In durable plastic storage case



Part No.	Quantity	Description	Weight
150.1585	20 pcs	Oil sump and cleaning set	385

consists of:

Part No.	Description	Weight
150.1541	Cutting knife holder	115
150.1542	Cutting knife, 1.6 mm, black	19
150.1543	Cutting knife, 2.0 mm, gold	21
150.1586	Guide pin	24
150.1587	Cleaning disk holder	44
150.1588	Cleaning disc set, 15 pcs	30
151.26025	Internal hexagon angled pin wrench, short, 2.5 mm	10

TRANSMISSION OIL COOLANT TOOL

Release pins for transmission oil cooler pipes

- Ideally suited for disconnecting pipe connections on the transmission oil coolant and the coolant loop to the power steering
- Necessary for work on the transmission of oil cooler
- Screwed in support brackets
- 5-stage adjustment
- With two component handle
- Chrome vanadium

Application range: BMW 1 series (E81, 82, 87, 88), 3 series (E46, 90, 91, 92, 93), 5 series (E60, E61), 6 series (E64, 63), 7 series (E65, 66), X3 (E83), X5 (E53, 70), X6 (E71), Z4 (E85, 86) and Mini (R50, 52, 53)



Part No.	Length mm	Width mm	Height mm	Weight
115.8504	134,0	220,0	55,0	360



OIL DRAIN PLUG THREAD REPAIRER

Oil drain plug seal seat face milling cutter set

- Tool for facing the seal seat of oil drain plugs
- Facing of the seal seat ensures reliable sealing in the area of the oil drain plug
- Exact centering and alignment of the sealing surface
- Set includes adaption for original oil drain plug and oversize threaded repair plug
- In durable plastic storage case



Part No.	Quantity	Description	Weight
150.1485	6 pcs	Oil drain plug seal seat face milling cutter set	700

consists of:

Part No.	Description	Weight
150.1486	3/8" seal place cutter 0°, Ø 22 mm with bore hole	147
150.1488	Expansion thread M14 x 1.5 to 150.1485	12
150.1489	Expansion thread M15 x 1.5 to 150.1485	14
150.1490	Pilot to 150.1485	25
150.1492	4 mm wrench to 150.1485	25
150.1493	8 mm wrench to 150.1485	36

accessories:

Part No.	Description	Weight
150.1494	Milling cutter 24 mm optional to 150.1485	208
150.1487	Toggle lever to 150.1485	36



Oil drain plug repair kit M12 x 1,5

- For the solid and fast repair of oil sump plug screw threads
- The damaged thread is cut down to M12 x 1.5 with the thread cutter
- Also suited for aluminium oil sumps
- Allows for repair work and avoids replacing the oil sump
- Also suitable for oil sumps with recessed drainage openings
- Special steel
- In durable plastic storage case

Application range: BMW, Citroën, Land Rover, Mazda, Peugeot, Volvo

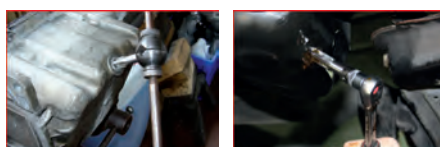


150.4915	12 pcs	Oil drain plug repair kit M12 x 1,5	280
5 x		M12 x 1,5	(150.1461 = 10 x)
5 x		M12 x 1,5	(150.1484 = 25 x)
1 x		M12 x 1,5	(150.4918)
1 x		10mm x 3/8"	(150.4919)

Oil drain plug repair kit M15 x 1,5

- For the solid and fast repair of oil sump plug screw threads
- The damaged thread is cut down to M15 x 1.5 with the thread cutter
- Also suited for aluminium oil sumps
- Allows for repair work and avoids replacing the oil sump
- Also suitable for oil sumps with recessed drainage openings
- Special steel
- In durable plastic storage case

Application range: Audi, BMW, Chrysler, Citroën, Daewoo, Ford, Honda, Mercedes, Opel, Peugeot, Saab, Skoda, Suzuki, Volkswagen, Volvo



150.4925	12 pcs	Oil drain plug repair kit M15 x 1,5	340
5 x		M15 x 1,5	(150.1451 = 10 x)
5 x		M15 x 1,5	(150.1452 = 25 x)
1 x		M15 x 1,5	(150.1453)
1 x		10mm x 3/8"	(150.4919)

Oil drain plug repair kit M18 x 1,5

- For the solid and fast repair of oil sump plug screw threads
- The damaged thread is cut down to M18 x 1.5 with the thread cutter
- Also suited for aluminium oil sumps
- Allows for repair work and avoids replacing the oil sump
- Also suitable for oil sumps with recessed drainage openings
- Special steel
- In durable plastic storage case

Application range: Chrysler, Citroën, Dacia, Nissan, Peugeot, Renault, Volvo



150.4935	12 pcs	Oil drain plug repair kit M18 x 1,5	360
5 x		M18 x 1,5	(150.1463 = 10 x)
5 x		M18 x 1,5	(150.1497 = 25 x)
1 x		M18 x 1,5	(150.4938)
1 x		10mm x 3/8"	(150.4919)

Oil drain plug repair kit M14 x 1,5

- For the solid and fast repair of oil sump plug screw threads
- The damaged thread is cut down to M14 x 1.5 with the thread cutter
- Also suited for aluminium oil sumps
- Allows for repair work and avoids replacing the oil sump
- Also suitable for oil sumps with recessed drainage openings
- Special steel
- In durable plastic storage case

Application range: Alfa Romeo, BMW, Daihatsu, Fiat, Ford, Jeep, Lancia, Mazda, Lexus, Mercedes, Opel, Nissan, Saab, Toyota



150.4920	12 pcs	Oil drain plug repair kit M14 x 1,5	320
5 x		M14 x 1,5	(150.1462 = 10 x)
5 x		M14 x 1,5	(150.1496 = 25 x)
1 x		M14 x 1,5	(150.4923)
1 x		10mm x 3/8"	(150.4919)

Oil drain plug repair kit M17 x 1,5

- For the solid and fast repair of oil sump plug screw threads
- The damaged thread is cut down to M17 x 1.5 with the thread cutter
- Also suited for aluminium oil sumps
- Allows for repair work and avoids replacing the oil sump
- Also suitable for oil sumps with recessed drainage openings
- Special steel
- In durable plastic storage case

Application range: Chrysler, Citroën, Dacia, Nissan, Peugeot, Renault, Volvo



150.4930	12 pcs	Oil drain plug repair kit M17 x 1,5	330
5 x		M17 x 1,5	(150.1454 = 10 x)
5 x		M17 x 1,5	(150.1455 = 25 x)
1 x		M17 x 1,5	(150.4956)
1 x		10mm x 3/8"	(150.4919)

Oil drain plug repair kit M20 x 1,5

- For the solid and fast repair of oil sump plug screw threads
- The damaged thread is cut down to M20 x 1.5 with the thread cutter
- Also suited for aluminium oil sumps
- Allows for repair work and avoids replacing the oil sump
- Also suitable for oil sumps with recessed drainage openings
- Special steel
- In durable plastic storage case

Application range: Alfa Romeo, Fiat, Isuzu, Opel, Porsche, Renault, Saab, Toyota, Volvo



150.4940	12 pcs	Oil drain plug repair kit M20 x 1,5	400
5 x		M20 x 1,5	(150.1457 = 10 x)
5 x		M20 x 1,5	(150.1458 = 25 x)
1 x		M20 x 1,5	(150.4959)
1 x		10mm x 3/8"	(150.4919)

Oil drain plug repair kit M22 x 1,5

- For the solid and fast repair of oil sump plug screw threads
- The damaged thread is cut down to M22 x 1.5 with the thread cutter
- Also suited for aluminium oil sumps
- Allows for repair work and avoids replacing the oil sump
- Also suitable for oil sumps with recessed drainage openings
- Special steel
- In durable plastic storage case

Application range: Citroën, Peugeot, Subaru

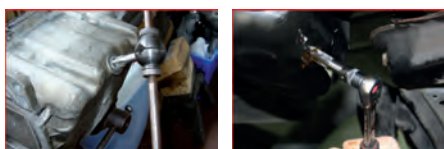


150.4945			
12 pcs	Oil drain plug repair kit M22 x 1,5	460	
5 x		M22 x 1,5	(150.1464 = 10 x)
5 x		M22 x 1,5	(150.1498 = 25 x)
1 x		M22 x 1,5	(150.4948)
1 x		10mm x 3/8"	(150.4919)

Oil drain plug repair kit M24 x 1,5

- For the solid and fast repair of oil sump plug screw threads
- The damaged thread is cut down to M24 x 1.5 with the thread cutter
- Also suited for aluminium oil sumps
- Allows for repair work and avoids replacing the oil sump
- Also suitable for oil sumps with recessed drainage openings
- Special steel
- In durable plastic storage case

Application range: Alfa Romeo, BMW, Fiat, Lada, Lancia, Opel, Porsche, Renault, Saab



150.4950			
12 pcs	Oil drain plug repair kit M24 x 1,5	580	
5 x		M24 x 1,5	(150.1465 = 10 x)
5 x		M24 x 1,5	(150.1499 = 25 x)
1 x		M24 x 1,5	(150.4953)
1 x		10mm x 3/8"	(150.4919)

Master oil drain plug thread repair set

- To the solid and fast repair of oil sump plug screw threads
- The damaged thread is cut to a larger thread by drilling with the next size drill
- Also suited for aluminium oil sumps
- Repair enables and avoids exchange of the oil sump
- Also suitable for oil sumps with damaged threads
- Special steel
- In durable plastic storage case

Application range: Audi, Citroen, BMW, Mercedes Benz, Ford, Fiat, Honda, Mazda, Mitsubishi, Nissan, Opel, Peugeot, Porsche, Renault, Saab, Seat, Skoda, Toyota, Volvo, Volkswagen, etc.



150.1450			
64 pcs	Master oil drain plug thread repair set	950	
40 x		10 x M13 - 10 x M15 - 10 x M17 10 x M20	
4 x		M13 - M15 - M17 - M20	
20 x		5 x M13 - 5 x M15 - 5 x M17 - 5 x M20	

HSS special hand thread cutter for oil drain plug thread repair

- For the solid and fast repair of oil sump plug screw threads
- The damaged thread is cut down to the next biggest size with the thread cutter
- In accordance to DIN 352
- For through threads with relief-edges
- Surface without discolouration
- High performance steel



	Ø mm	mm	Content	
150.4918	M12	1,5	10,0	1 46
150.1449	M13	1,5	10,0	1 40
150.4923	M14	1,5	10,0	1 58
150.1453	M15	1,5	10,0	1 50
150.1456	M17	1,5	10,0	1 60
150.4938	M18	1,5	10,0	1 89
150.1459	M20	1,5	10,0	1 70
150.4948	M22	1,5	10,0	1 143
150.4953	M24	1,5	10,0	1 151

Oil drain plug

- For oil sump threads
- Suitable for oil sumps made from aluminium, steel, die cast and metal
- Suitable for almost all vehicles



	Ø mm	Profile	mm	Content	
150.1461	M12	1,5	17,0	10	220
150.1447	M13	1,5	17,0	10	300
150.1462	M14	1,5	19,0	10	290
150.1451	M15	1,5	19,0	10	320
150.1454	M17	1,5	8,0	10	360
150.1463	M18	1,5	8,0	10	290
150.1457	M20	1,5	10,0	10	390
150.1464	M22	1,5	12,0	10	420
150.1465	M24	1,5	14,0	10	600

Aluminium seals for oil drain plug

- For the exchange after the oil change
- Also necessary for oil sump plug repairs
- Aluminium
- Suitable for almost all vehicles



	Content	
150.1484	M12	25 10
150.1448	M13	25 10
150.1496	M14	25 10
150.1452	M15	25 10
150.1455	M17	25 10
150.1497	M18	25 10
150.1458	M20	25 10
150.1498	M22	25 10
150.1499	M24	25 10

OIL FILTER TENSION WRENCH

Oil filter band wrench

- Ideally suited for the installation and removal of filters and filter cartridges
- One hand operation
- Fully adjustable
- Also for hard-to-reach filter housing
- Adjustment on the filter flow measure by turning the knob on the end of the handle
- Dimpled spring steel band gives a secure mounting on the filter and provides a powerful wrench releasing of the filter



	Ø mm	Replacement band	
155.5002	65,0-110,0	155.0238	241
155.5003	110,0-155,0	155.0338	450

Oil filter band wrench

- Ideally suited for the installation and removal of filters and filter cartridges
- One hand operation
- Fully adjustable
- Also for hard-to-reach filter housing
- Adjustment on the filter flow measure by turning the knob on the end of the handle
- Dimpled spring steel band gives a secure mounting on the filter and provides a powerful wrench releasing of the filter
- Ergonomic handle shape



Ø mm	Band length mm	Handle length mm	Weight g
155.5005	65,0-105,0	540,0	170,0

Oil filter band wrench

- Ideally suited for the installation and removal of filters and filter cartridges
- One hand operation
- Fully adjustable
- Also for hard-to-reach filter housing
- Handle can also be turned 90° via the turning joint
- Grooves give a secure mounting on the filter and provides a powerful wrench releasing of the filter
- PVC dipped handle



Ø mm	Weight g
150.9377	60,0 - 73,0
150.9378	73,0 - 85,0
150.9379	85,0 - 95,0

Oil filter band wrench

- Ideally suited for the installation and removal of filters and filter cartridges
- One hand operation
- Fully adjustable
- Also for hard-to-reach filter housing
- Strap made from hardened non-slip rubber gives a secure mounting on the filter and provides a powerful wrench releasing of the filter
- With glass fibre hardened handle



Ø mm	L mm	Weight g
114.0150	110,0	190,0

Oil filter band wrench

- Ideally suited for the removal of filters and filter cartridges
- One hand operation
- Fully adjustable
- Also for hard-to-reach filter housing
- Anti-slip and secured-rubber cotton fabric band gives a secure mounting on the filter and provides a powerful wrench releasing of the filter
- With metal grip
- Chrome plated
- Chrome vanadium



Ø mm	Ø mm	Ø mm	L mm	Replacement band	Weight g
114.0170	20,0	140,0	9/64" 220,0	114.0170-1	323
114.0171	25,0	200,0	13/64" 280,0	114.0171-1	590

Oil filter band wrench

- Sturdy and extra high steel band
- Ideally suited for the installation and removal of filters and filter cartridges
- Internal square drive to DIN 3120 - ISO 1174
- Also for hard-to-reach filter housing
- Especially large working area
- Grooves give a secure mounting on the filter and provides a powerful wrench releasing of the filter
- Special steel



Ø mm	Ø mm	H mm	Weight g
455.0050	105 - 118	4.1/8" - 4.21/32"	75,0
455.0051	118 - 130	4.21/32" - 5.5/32"	75,0
455.0052	130 - 143	5.5/32" - 5.21/32"	75,0

Oil filter and air dryer cartridge chains wrench

- Extremely robust double tension chain
- Ideally suited for the installation and removal of filters, filter cartridges and air dryer cartridges
- One hand operation
- Fully adjustable
- Also for hard-to-reach filter housing
- Handle can also be turned 90° via the turning joint
- Double tension chain gives a secure mounting on the filter and provides a powerful wrench releasing of the filter
- PVC dipped handle



Ø mm	Weight g
150.9375	130,0
150.9376	165,0

Oil filter pliers

- Forged, extremely robust execution
- Toughened teeth prevent slips
- Ideally suited for the installation and removal of filters and filter cartridges
- One hand operation
- With 5 levels of adjustment
- Also for hard-to-reach filter housing
- Special griffin teeth give a secure mounting on the filter and provides a powerful wrench releasing of the filter
- Special tool steel
- PVC dipped handle



A mm	L1 mm	L2 mm	Weight g
150.9317	50-125	290,0	110,0

Universal oil filter wrench

- Fully adjustable with self-tensioning effect
- The special automatic left and right side adjustment mechanism allows for the releasing and tightening of different sizes oil filters
- Left-toothed jaws for a better hold when releasing
- Ideally suited for the installation and removal of filters and filter cartridges
- Internal square drive to DIN 3120 - ISO 1174
- Also for hard-to-reach filter housing
- Special toughened griffin teeth give a secure mounting on the filter and provides a powerful wrench releasing of the filter
- Forged, extremely robust execution
- Special steel



Ø mm	D mm	H mm	Weight g
700.5005	22	60 - 80	40,0
700.5006	22	80 - 110	50,0

Oil filter tension wrench

- Fully adjustable
- The special automatic left and right side adjustment mechanism makes possible the releasing and tightening of different sizes oil filters
- Ideally suited for the installation and removal of filters and filter cartridges
- Internal square drive to DIN 3120 - ISO 1174
- Also for hard-to-reach filter housing
- Specially angled surface areas give a secure mounting on the filter and provides a powerful wrench releasing of the filter
- Sheet construction
- Painted surface



Ø mm	Ø mm	Weight g
150.9313	21	63,0-102,0
150.9314	21	65,0-120,0

Oil filter and air dryer cartridge wrench

- Fully adjustable
- The special automatic left and right side adjustment mechanism makes possible the releasing and tightening of different sizes oil filters
- Ideally suited for the installation and removal of filters and filter cartridges and air dryer cartridges
- Internal square drive to DIN 3120 - ISO 1174
- Also for hard-to-reach filter housing
- Specially chequered and hardened surface areas give a secure mounting on the filter and provides a powerful wrench releasing of the filter
- Forged, extremely robust execution
- Special steel



1/2"

	mm	Ø mm	g
700.5001	24	75 - 110	0.63
700.5002	30	105 - 150	1.40

SPECIAL OIL FILTER WRENCH

Oil filter wrench for Ford, Jaguar, Citroën, Peugeot Duratorq TDCi/HDI twin cam diesel engines

- Ideally suited for installation and removal of hard to reach oil filter covers when changing the oil filter unit
- 12-point
- Perfectly suited for tight installation areas
- Suitable for left and right side operation
- Correct and torque controlled assembly
- Special socket
- Internal square drive to DIN 3120 - ISO 1174
- Chrome vanadium

Application range:

(DW10C) Citroën, Ford, Peugeot 2.0 L Duratorq-TDCi/HDI: Peugeot 308 2.0 HDi 163cv (> 2011), 3008 2.0 16v HDi 163CV (> July 2009), 5008 2.0 HDi 163CV (> December 2009), 407 2.0 HDi 163 CV (2010-2011), 407 Coupé 2.0 HDi 163 CV (2009-2012), 508 2.0 HDi 163CV (> 10/2010), RCZ 2.0 HDi (> April 2010), Citroën C4 Picasso 2.0 HDi 16v 163CV aut. (> 09/2010), C5 2.0 16v HDi (> 2010), C8 2.0 HDi (> 2010), DS4 2.0 HDi (> 2011), DS5 2.0 HDi (> 2011), Ford Mondeo Mk3 2.0 TDCi 163 CV (> 2010), C-Max/C-Max 2.0 TDCi 163CV (> 2010), Galaxy Mk3 2.0 TDCi 163 CV (> 2010), S-Max 2.0 TDCi 163 CV (> 2010), Kuga 2.0 TDCi (> 2010)

(DW12C) Citroën, Ford, Jaguar 2.2 L Duratorq-TDCi/HDI: Citroën C5 Mk2 2.2 HDi (> 10/2010), 508 2.2 HDi GT (> 10/2010), Ford Mondeo Mk3 2.2 TDCi (> 12/2010), Galaxy Mk2 2.2 TDCi (> 2010), S-Max 2.2 TDCi (> 2010), Jaguar XF 2.2D Sportbrake (> 2012)



1/2"

	mm	L mm	g
150.9306	27	245.0	400

Oil filter wrench for Ford, Jaguar, Citroën, Peugeot Duratorq TDCi/HDI twin cam diesel engines

- Ideally suited for installation and removal of hard to reach oil filter covers when changing the oil filter unit
- 12-point
- With ratchet function
- External drive hexagonal socket 13 mm
- Perfectly suited for tight installation areas
- Suitable for left and right side operation
- Correct and torque controlled assembly
- Special socket
- Internal square in accordance with DIN 3120/ISO 1174
- Chrome vanadium

Application range:

(DW10C) Citroën, Ford, Peugeot 2.0 L Duratorq-TDCi/HDI: Peugeot 308 2.0 HDi 163cv (> 2011), 3008 2.0 16v HDi 163CV (> July 2009), 5008 2.0 HDi 163CV (> December 2009), 407 2.0 HDi 163 CV (2010-2011), 407 Coupé 2.0 HDi 163 CV (2009-2012), 508 2.0 HDi 163CV (> 10/2010), RCZ 2.0 HDi (> April 2010), Citroën C4 Picasso 2.0 HDi 16v 163CV aut. (> 09/2010), C5 2.0 16v HDi (> 2010), C8 2.0 HDi (> 2010), DS4 2.0 HDi (> 2011), DS5 2.0 HDi (> 2011), Ford Mondeo Mk3 2.0 TDCi 163 CV (> 2010), C-Max/C-Max 2.0 TDCi 163CV (> 2010), Galaxy Mk3 2.0 TDCi 163 CV (> 2010), S-Max 2.0 TDCi 163 CV (> 2010), Kuga 2.0 TDCi (> 2010)

(DW12C) Citroën, Ford, Jaguar 2.2 L Duratorq-TDCi/HDI: Citroën C5 Mk2 2.2 HDi (> 10/2010), 508 2.2 HDi GT (> 10/2010), Ford Mondeo Mk3 2.2 TDCi (> 12/2010), Galaxy Mk2 2.2 TDCi (> 2010), S-Max 2.2 TDCi (> 2010), Jaguar XF 2.2D Sportbrake (> 2012)



	mm	Length mm	g
150.9446	27	410.0	980

Oil filter wrench for Opel and Vauxhall petrol engines

- Ideally suited for installation and removal of hard to reach oil filter covers when changing the oil filter unit
- 12-point
- Perfectly suited for tight installation areas
- Suitable for left and right side operation
- Correct and torque controlled assembly
- Special socket
- Internal square in accordance with DIN 3120/ISO 1174
- Chrome vanadium

Application range: for Opel and Vauxhall 2.0 l and 2.2 l petrol engines, e.g. Opel Astra G and H, Vectra B, Vectra C, Speedster, Zafira A and B, Omega B, Signum, Insignia, etc.



	mm	Length mm	g
150.9444	32	140.0	340



Oil filter wrench Ø 76 mm / 12 grooves

- Ideally suited for installation and removal of hard to reach oil filter covers when changing the oil filter unit
- One hand operation
- Suitable for left and right side operation
- Special socket
- Long handle for optimal force
- PVC dipped handle
- Chrome vanadium

Application range: Ford with 1.8 l diesel engine and Motocraft filter EFL 344/Peugeot with Purflux filter/Renault petrol engines, e.g. R5, Twingo, Rapid, Clio, Kangoo, Laguna, Megane, Traffic each with the filter numbers 77 00 873 and 77 00 720 978/ Honda Prelude BA4 2.0 16V/ Land Rover Defender 2.5 l Diesel (DD5) with filter number LPX 100 590



	Ø mm	Grooves	Length mm	g
150.9308	76,0	12	330,0	400

Oil filter wrench for Haldex transmission

- For quick and correct assembly and disassembly of the hard to reach oil filter on the Haldex transmission
- 12-point
- Matt finish
- Chrome vanadium

Application range: Volkswagen Golf/Passat/Sharan/Caddy/Tiguan/Transporter T5 (4MOTION Models), Škoda Yeti/Octavia II/Superb II with all-wheel transmission shift



	mm	L mm	g
150.2098	46,0	390,0	770

Oil filter wrench for Audi / Volkswagen

- For the quick and correct assembly and disassembly of the hard to reach oil filter
- Suitable for Mann, Knecht or Mahle filters
- Use according to the manufacturer's specification for torque
- Suitable for left and right side operation
- Internal square drive to DIN 3120 - ISO 1174
- For manual operation
- Forged execution
- Matt finish
- Chrome vanadium

Application range: Audi, Volkswagen diesel engines with MANN oil or fuel filter W 920, W 920/7, W 930, W 930/9, W 940, W 940/15, W 940/20, W 940/25, W 950, W 950/1, W 950/5, W 962/2, W 962/7, W 962/14, W 1130/1, WK 940/4, WK 950/4, WK 962/5, WP 931 and WP 962/3, as well as KNECHT and MAHLE oil filters: OC 51, OC 83 and OC 214



1/2"

	mm	Ø mm	Height mm	g
150.9259	22,0	49,5	24,0	113

Oil filter cover wrench overview

article-no.	dimension	stages	grooves	sides
150.9366	27	1		6
150.9217	27			6
150.9367	32	1		6
150.9218	32			6
150.9368	36	1		6
150.9219	36			6
150.9291	36	1		6
150.9319	64	1		14
150.9211	64,5	1		14
150.9212	64,5	1		14
150.9321	65	1		14
150.9330	65/67	2		14
150.9336	66	1	6	
150.9408	66	1	18	
150.9411	66,5	1	45	
150.9322	68	1		14
150.9304	72	1		14
150.9323	73	1		14
150.9309	73	1		10
150.9337	74	1		15
150.9292	74	1		14
150.9311	74	1	30	
150.9312	74	1		8
150.9324	74/76	2		15
150.9215	74,2	1		14
150.9412	75	1	16	
150.9333	75/77	2		15
150.9325	76	1		14
150.9338	76	1	12	
150.9339	76	1	8	
150.9334	76	1	30	
150.9406	76	1	6	
150.9341	78	1		15
150.9318	79	1		15
150.9326	80	1		15
150.9331	80/82	2		15
150.9342	86	1		18
150.9343	86	1		16
150.9214	86,6	1		16
150.9413	87	1	16	
150.9213	88,8	1		15
150.9332	90	1		15
150.9369	91	1		15
150.9423	91	1	12	
150.9344	92	1		10
150.9374	92	1	36	
150.9428	92	1	6	
150.9327	93	1		15
150.9345	93	1	45	
150.9329	93	1	36	
150.9346	95	1	15	
150.9347	96	1	18	
150.9429	96	1	6	
150.9381	99	1		15
150.9335	100	1		15
150.9382	103	1		14
150.9348	106	1		15
150.9293	106	1		15
150.9294	107	1		15
150.9349	108	1		15
150.9351	108	1	18	
150.9295	108	1		15
150.9296	108	1	18	
150.9383	109	1	6	
150.9297	135	1		18

OIL FILTER CAP WRENCH

Oil filter wrench Ø 27.0 mm / 6 grooves

- For the quick and professional installation and dismantling of the oil filter cover when changing the oil filter insert
- Use according to the manufacturer's specification for torque
- Suitable for left and right side operation
- Internal square drive to DIN 3120 - ISO 1174
- External drive hexagonal socket 21.0 mm
- For manual operation
- Painted surface

Application range: Mercedes, Mazda, etc.



Oil filter wrench Ø 27.0 mm / 6 grooves

- For the quick and professional installation and dismantling of the oil filter cover when changing the oil filter insert
- Use according to the manufacturer's specification for torque
- Suitable for left and right side operation
- Internal square drive to DIN 3120 - ISO 1174
- For manual operation
- Forged execution
- Matt finish
- Chrome vanadium

Application range: Mercedes, Smart, etc.



Oil filter wrench Ø 32.0 mm / 6 grooves

- For the quick and professional installation and dismantling of the oil filter cover when changing the oil filter insert
- Use according to the manufacturer's specification for torque
- Suitable for left and right side operation
- Internal square drive to DIN 3120 - ISO 1174
- External drive hexagonal socket 21.0 mm
- For manual operation
- Painted surface

Application range: Volkswagen, Opel, Audi, etc.



Oil filter wrench Ø 32.0 mm / 6 grooves

- For the quick and professional installation and dismantling of the oil filter cover when changing the oil filter insert
- Use according to the manufacturer's specification for torque
- Suitable for left and right side operation
- Internal square drive to DIN 3120 - ISO 1174
- For manual operation
- Forged execution
- Matt finish
- Chrome vanadium

Application range: Opel, Mercedes, GM, etc.



Oil filter wrench Ø 36.0 mm / 6 grooves

- For the quick and professional installation and dismantling of the oil filter cover when changing the oil filter insert
- Use according to the manufacturer's specification for torque
- Suitable for left and right side operation
- Internal square drive to DIN 3120 - ISO 1174
- External drive hexagonal socket 21.0 mm
- For manual operation
- Painted surface

Application range: Mercedes, BMW, Ford, Volkswagen, Rover, Opel, etc.



Oil filter wrench Ø 36.0 mm / 6 grooves

- For the quick and professional installation and dismantling of the oil filter cover when changing the oil filter insert
- Use according to the manufacturer's specification for torque
- Suitable for left and right side operation
- Internal square drive to DIN 3120 - ISO 1174
- For manual operation
- Forged execution
- Matt finish
- Chrome vanadium

Application range: BMW, Mini, Volkswagen, Mercedes, Ford, etc.



Oil filter wrench Ø 36.0 mm / 6 grooves

- For the quick and professional installation and dismantling of the oil filter cover when changing the oil filter insert
- Use according to the manufacturer's specification for torque
- Suitable for left and right side operation
- Internal square drive to DIN 3120 - ISO 1174
- For manual operation
- Painted surface

Application range: Mercedes, BMW, Opel, Volkswagen, Audi



Oil filter wrench Ø 64.0 mm / 14 grooves

- For the quick and professional installation and dismantling of the oil filter cover when changing the oil filter insert
- Use according to the manufacturer's specification for torque
- Suitable for left and right side operation
- Internal square drive to DIN 3120 - ISO 1174
- For manual operation
- Painted surface

Application range: Toyota, Nissan, Mazda, Fiat, Daihatsu, etc.



Oil filter wrench Ø 64.5 mm / 14 grooves

- For the quick and professional installation and dismantling of the oil filter cover when changing the oil filter insert
- Use according to the manufacturer's specification for torque
- Suitable for left and right side operation
- Internal square drive to DIN 3120 - ISO 1174
- For manual operation
- Painted surface

Application range: Toyota, Lexus (6 cylinder), etc.



1
2
3
4
5
6
7
8
9
10
11
12
13
14
15
16
17
18
19
20
21
22
23
24
25
26

Oil filter wrench Ø 64.5 mm / 14 grooves

- For the quick and professional installation and dismantling of the oil filter cover when changing the oil filter insert
- Use according to the manufacturer's specification for torque
- Suitable for left and right side operation
- Internal square drive to DIN 3120 - ISO 1174
- For manual operation
- Painted surface

Application range: Toyota Auris, Corolla, Isis, Prius, etc.



3/8"

	mm	Stages	Sides	g
150.9212	64,5	1	14	144

Oil filter wrench Ø 66.0 mm / 6 grooves

- For the quick and professional installation and dismantling of the oil filter cover when changing the oil filter insert
- Use according to the manufacturer's specification for torque
- Suitable for left and right side operation
- Internal square drive to DIN 3120 - ISO 1174
- For manual operation
- Painted surface

Application range: Fiat, Renault



3/8"

	mm	Stages	Grooves	g
150.9336	66	1	6	190

Oil filter wrench Ø 68.0 mm / 14 grooves

- For the quick and professional installation and dismantling of the oil filter cover when changing the oil filter insert
- Use according to the manufacturer's specification for torque
- Suitable for left and right side operation
- Internal square drive to DIN 3120 - ISO 1174
- For manual operation
- Painted surface

Application range: Mazda, Ford, Subaru, etc.



3/8"

	mm	Stages	Sides	g
150.9322	68	1	14	320

Oil filter wrench Ø 65.0 mm / 14 grooves

- For the quick and professional installation and dismantling of the oil filter cover when changing the oil filter insert
- Use according to the manufacturer's specification for torque
- Suitable for left and right side operation
- Internal square drive to DIN 3120 - ISO 1174
- For manual operation
- Painted surface

Application range: Daihatsu, Toyota, Nissan, Fiat, Honda, etc.



3/8"

	mm	Stages	Sides	g
150.9321	65	1	14	150

Oil filter wrench Ø 66.0 mm / 18 grooves

- For the quick and professional installation and dismantling of the oil filter cover when changing the oil filter insert
- Use according to the manufacturer's specification for torque
- Suitable for left and right side operation
- Internal square drive to DIN 3120 - ISO 1174
- For manual operation
- Painted surface

Application range: Renault, etc.



3/8"

	mm	Stages	Grooves	g
150.9408	66	1	18	140

Oil filter wrench Ø 73.0 mm / 14 grooves

- For the quick and professional installation and dismantling of the oil filter cover when changing the oil filter insert
- Use according to the manufacturer's specification for torque
- Suitable for left and right side operation
- Internal square drive to DIN 3120 - ISO 1174
- For manual operation
- Painted surface

Application range: Toyota, Lexus, etc.



3/8"

	mm	Stages	Sides	g
150.9323	73	1	14	150

Oil filter wrench Ø 65/0 + 67.0 mm / 14 grooves

- For the quick and professional installation and dismantling of the oil filter cover when changing the oil filter insert
- Use according to the manufacturer's specification for torque
- Suitable for left and right side operation
- Internal square drive to DIN 3120 - ISO 1174
- For manual operation
- Painted surface

Application range: Daihatsu, Toyota, etc.



3/8"

	mm	Stages	Sides	g
150.9330	65/67	2	14	150

Oil filter wrench Ø 92.3 mm / 45 grooves

- For the quick and professional installation and dismantling of the oil filter cover when changing the oil filter insert
- Use according to the manufacturer's specification for torque
- Suitable for left and right side operation
- Internal square drive to DIN 3120 - ISO 1174
- For manual operation
- Painted surface

Application range: Audi, Nissan, Volkswagen, etc.



3/8"

	mm	Stages	Grooves	g
150.9411	92,3	1	45	220

Oil filter wrench Ø 73.0 mm / 10 grooves

- For the quick and professional installation and dismantling of the oil filter cover when changing the oil filter insert
- Use according to the manufacturer's specification for torque
- Suitable for left and right side operation
- Internal square drive to DIN 3120 - ISO 1174
- For manual operation
- Painted surface

Application range: Alfa Romeo GTA



3/8"

	mm	Stages	Sides	g
150.9309	73,0	1	10	280

Oil filter wrench Ø 74.0 mm / 15 grooves

- For the quick and professional installation and dismantling of the oil filter cover when changing the oil filter insert
- Use according to the manufacturer's specification for torque
- Suitable for left and right side operation
- Internal square drive to DIN 3120 - ISO 1174
- For manual operation
- Painted surface

Application range: Audi, GM, Rover, Chrysler, etc.



3/8"

	mm	Stages	Sides	g
150.9337	74	1	15	220

Oil filter wrench Ø 74.2 mm / 14 grooves

- For the quick and professional installation and dismantling of the oil filter cover when changing the oil filter insert
- Use according to the manufacturer's specification for torque
- Suitable for left and right side operation
- Internal square drive to DIN 3120 - ISO 1174
- For manual operation
- Painted surface

Application range: Audi, BMW, Ford, Toyota, Volkswagen, Mercedes, Porsche (all models with V6+V8), etc.



3/8"

	mm	Stages	Sides	g
150.9215	74,2	1	14	172

Oil filter wrench Ø 76.0 mm / 14 grooves

- For the quick and professional installation and dismantling of the oil filter cover when changing the oil filter insert
- Use according to the manufacturer's specification for torque
- Suitable for left and right side operation
- Internal square drive to DIN 3120 - ISO 1174
- For manual operation
- Painted surface

Application range: Volkswagen, Mercedes, Porsche, BMW, Audi, Opel, etc.



3/8"

	mm	Stages	Sides	g
150.9325	76	1	14	150

Oil filter wrench Ø 74.0 mm / 14 grooves

- For the quick and professional installation and dismantling of the oil filter cover when changing the oil filter insert
- Use according to the manufacturer's specification for torque
- Suitable for left and right side operation
- Internal square drive to DIN 3120 - ISO 1174
- For manual operation
- Painted surface

Application range: Audi, BMW, Ford, Lancia, Mazda, Mercedes, Fiat, etc.



1/2"

	mm	Stages	Sides	g
150.9292	74,0	1	14	140

Oil filter wrench Ø 75.3 mm / 16 grooves

- For the quick and professional installation and dismantling of the oil filter cover when changing the oil filter insert
- Use according to the manufacturer's specification for torque
- Suitable for left and right side operation
- Internal square drive to DIN 3120 - ISO 1174
- For manual operation
- Painted surface

Application range: Saab, Fiat, Alfa Romeo, etc.



1/2"

	mm	Stages	Grooves	g
150.9412	75,3	1	16	160

Oil filter wrench Ø 76.0 mm / 12 grooves

- For the quick and professional installation and dismantling of the oil filter cover when changing the oil filter insert
- Use according to the manufacturer's specification for torque
- Suitable for left and right side operation
- Internal square drive to DIN 3120 - ISO 1174
- For manual operation
- Painted surface

Application range: Fiat, Renault, Mercedes, etc.



3/8"

	mm	Stages	Grooves	g
150.9338	76	1	12	190

Oil filter wrench Ø 74.0 + 76.0 mm / 15 grooves

- For the quick and professional installation and dismantling of the oil filter cover when changing the oil filter insert
- Use according to the manufacturer's specification for torque
- Suitable for left and right side operation
- Internal square drive to DIN 3120 - ISO 1174
- For manual operation
- Painted surface

Application range: Ford, Opel, Volkswagen, Audi, Mercedes, etc.



3/8"

	mm	Stages	Sides	g
150.9324	74/76	2	15	170

Oil filter wrench Ø 75.0 + 77.0 mm / 15 grooves

- For the quick and professional installation and dismantling of the oil filter cover when changing the oil filter insert
- Use according to the manufacturer's specification for torque
- Suitable for left and right side operation
- Internal square drive to DIN 3120 - ISO 1174
- For manual operation
- Painted surface

Application range: Volkswagen, Audi, Ford, Isuzu, Mercedes, Opel, etc.



3/8"

	mm	Stages	Sides	g
150.9333	75/77	2	15	150

Oil filter wrench Ø 76.0 mm / 8 grooves

- For the quick and professional installation and dismantling of the oil filter cover when changing the oil filter insert
- Use according to the manufacturer's specification for torque
- Suitable for left and right side operation
- Internal square drive to DIN 3120 - ISO 1174
- For manual operation
- Painted surface

Application range: Fiat, Lancia, etc.



3/8"

	mm	Stages	Grooves	g
150.9339	76	1	8	170

Oil filter wrench Ø 76.0 mm / 30 grooves

- For the quick and professional installation and dismantling of the oil filter cover when changing the oil filter insert
- Use according to the manufacturer's specification for torque
- Suitable for left and right side operation
- Internal square drive to DIN 3120 - ISO 1174
- For manual operation
- Painted surface

Application range: Ford, etc.



3/8"

	mm	Stages	Grooves	g
150.9334	76	1	30	150

Oil filter wrench Ø 80.0 mm / 15 grooves

- For the quick and professional installation and dismantling of the oil filter cover when changing the oil filter insert
- Use according to the manufacturer's specification for torque
- Suitable for left and right side operation
- Internal square drive to DIN 3120 - ISO 1174
- For manual operation
- Painted surface

Application range: Nissan, Honda, Opel, Mazda, etc.



3/8"

	mm	Stages	Sides	g
150.9326	80	1	15	150

Oil filter wrench Ø 86.0 mm / 16 grooves

- For the quick and professional installation and dismantling of the oil filter cover when changing the oil filter insert
- Use according to the manufacturer's specification for torque
- Suitable for left and right side operation
- Internal square drive to DIN 3120 - ISO 1174
- For manual operation
- Painted surface

Application range: Volvo, etc.



3/8"

	mm	Stages	Sides	g
150.9343	86	1	16	180

Oil filter wrench Ø 76.0 mm / 6 grooves

- For the quick and professional installation and dismantling of the oil filter cover when changing the oil filter insert
- Use according to the manufacturer's specification for torque
- Suitable for left and right side operation
- Internal square drive to DIN 3120 - ISO 1174
- For manual operation
- Painted surface

Application range: Audi, Citroën, Ford, Mercedes, Honda, Renault, Suzuki, etc.



3/8"

	mm	Stages	Grooves	g
150.9406	76,0	1	6	220

Oil filter wrench Ø 80.0 + 82.0 mm / 15 grooves

- For the quick and professional installation and dismantling of the oil filter cover when changing the oil filter insert
- Use according to the manufacturer's specification for torque
- Suitable for left and right side operation
- Internal square drive to DIN 3120 - ISO 1174
- For manual operation
- Painted surface

Application range: Subaru, Toyota, Honda, Mazda, Nissan, etc.



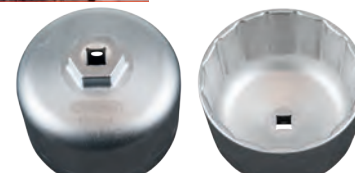
3/8"

	mm	Stages	Sides	g
150.9331	80/82	2	15	150

Oil filter wrench Ø 86.6 mm / 16 grooves

- For the quick and professional installation and dismantling of the oil filter cover when changing the oil filter insert
- Use according to the manufacturer's specification for torque
- Suitable for left and right side operation
- Internal square drive to DIN 3120 - ISO 1174
- For manual operation
- Painted surface

Application range: Volvo, BMW, etc.



3/8"

	mm	Stages	Sides	g
150.9214	86,6	1	16	293

Oil filter wrench Ø 78.0 mm / 15 grooves

- For the quick and professional installation and dismantling of the oil filter cover when changing the oil filter insert
- Use according to the manufacturer's specification for torque
- Suitable for left and right side operation
- Internal square drive to DIN 3120 - ISO 1174
- For manual operation
- Painted surface

Application range: Nissan, Ford, Toyota, etc.



3/8"

	mm	Stages	Sides	g
150.9341	78	1	15	170

Oil filter wrench Ø 86.0 mm / 18 grooves

- For the quick and professional installation and dismantling of the oil filter cover when changing the oil filter insert
- Use according to the manufacturer's specification for torque
- Suitable for left and right side operation
- Internal square drive to DIN 3120 - ISO 1174
- For manual operation
- Painted surface

Application range: Volkswagen, Audi, Renault, Peugeot, Citroën, etc.



3/8"

	mm	Stages	Sides	g
150.9342	86	1	18	143

Oil filter wrench Ø 87.0 mm / 16 grooves

- For the quick and professional installation and dismantling of the oil filter cover when changing the oil filter insert
- Use according to the manufacturer's specification for torque
- Suitable for left and right side operation
- Internal square drive to DIN 3120 - ISO 1174
- For manual operation
- Painted surface

Application range: Volkswagen, Audi, Renault, Peugeot, Citroën, etc.



3/8"

	mm	Stages	Sides	g
150.9413	87	1	16	240

Oil filter wrench Ø 88.8 mm / 15 grooves

- For the quick and professional installation and dismantling of the oil filter cover when changing the oil filter insert
- Use according to the manufacturer's specification for torque
- Suitable for left and right side operation
- Internal square drive to DIN 3120 - ISO 1174
- For manual operation
- Painted surface

Application range: Hyundai, Kia, etc.



3/8"

	mm	Stages	Sides	g
150.9213	88,8	1	15	289

Oil filter wrench Ø 92.0 mm / 10 grooves

- For the quick and professional installation and dismantling of the oil filter cover when changing the oil filter insert
- Use according to the manufacturer's specification for torque
- Suitable for left and right side operation
- Internal square drive to DIN 3120 - ISO 1174
- For manual operation
- Painted surface

Application range: Fiat, Lancia, etc.



3/8"

	mm	Stages	Sides	g
150.9344	92	1	10	180

Oil filter wrench Ø 93.0 mm / 45 grooves

- For the quick and professional installation and dismantling of the oil filter cover when changing the oil filter insert
- Use according to the manufacturer's specification for torque
- Suitable for left and right side operation
- Internal square drive to DIN 3120 - ISO 1174
- For manual operation
- Painted surface

Application range: Volkswagen, Audi, etc.



3/8"

	mm	Stages	Grooves	g
150.9345	93	1	45	180

Oil filter wrench Ø 90.0 mm / 15 grooves

- For the quick and professional installation and dismantling of the oil filter cover when changing the oil filter insert
- Use according to the manufacturer's specification for torque
- Suitable for left and right side operation
- Internal square drive to DIN 3120 - ISO 1174
- For manual operation
- Painted surface

Application range: Honda, Isuzu, Mitsubishi, etc.



3/8"

	mm	Stages	Sides	g
150.9332	90	1	15	150

Oil filter wrench Ø 66.6 mm / 6 grooves

- For the quick and professional installation and dismantling of the oil filter cover when changing the oil filter insert
- Use according to the manufacturer's specification for torque
- Suitable for left and right side operation
- Internal square drive to DIN 3120 - ISO 1174
- For manual operation
- Painted surface

Application range: Renault, etc.



3/8"

	mm	Stages	Grooves	g
150.9428	66,6	1	6	140

Oil filter wrench Ø 93.0 mm / 36 grooves

- For the quick and professional installation and dismantling of the oil filter cover when changing the oil filter insert
- Use according to the manufacturer's specification for torque
- Suitable for left and right side operation
- Internal square drive to DIN 3120 - ISO 1174
- For manual operation
- Painted surface

Application range: Ford, etc.



3/8"

	mm	Stages	Grooves	g
150.9329	93	1	36	150

Oil filter wrench Ø 91.0 mm / 12 grooves

- For the quick and professional installation and dismantling of the oil filter cover when changing the oil filter insert
- Use according to the manufacturer's specification for torque
- Suitable for left and right side operation
- Internal square drive to DIN 3120 - ISO 1174
- For manual operation
- Painted surface

Application range: Fiat Ducato, etc.



3/8"

	mm	Stages	Grooves	g
150.9423	91	1	12	220

Oil filter wrench Ø 95.0 mm / 15 grooves

- For the quick and professional installation and dismantling of the oil filter cover when changing the oil filter insert
- Use according to the manufacturer's specification for torque
- Suitable for left and right side operation
- Internal square drive to DIN 3120 - ISO 1174
- For manual operation
- Painted surface

Application range: Mazda, Volvo, Mitsubishi, Nissan, Honda, etc.



3/8"

	mm	Stages	Sides	g
150.9327	93	1	15	150

Oil filter wrench Ø 95.0 mm / 15 grooves

- For the quick and professional installation and dismantling of the oil filter cover when changing the oil filter insert
- Use according to the manufacturer's specification for torque
- Suitable for left and right side operation
- Internal square drive to DIN 3120 - ISO 1174
- For manual operation
- Painted surface

Application range: Toyota, Alfa Romeo, GM, Ford, Chrysler, etc.



3/8"

	mm	Stages	Grooves	g
150.9346	95	1	15	190

1
2
3
4
5
6
7
8
9
10
11
12
13
14
15
16
17
18
19
20
21
22
23
24
25
26

Oil filter wrench Ø 96.0 mm / 18 grooves

- For the quick and professional installation and dismantling of the oil filter cover when changing the oil filter insert
- Use according to the manufacturer's specification for torque
- Suitable for left and right side operation
- Internal square drive to DIN 3120 - ISO 1174
- For manual operation
- Painted surface

Application range: Volkswagen, Audi, Renault, etc.



3/8"

	mm	Stages	Grooves	g
150.9347	96	1	18	190

Oil filter wrench Ø 103.0 mm / 14 grooves

- For the quick and professional installation and dismantling of the oil filter cover when changing the oil filter insert
- Use according to the manufacturer's specification for torque
- Suitable for left and right side operation
- Internal square drive to DIN 3120 - ISO 1174
- For manual operation
- Painted surface

Application range: Opel, Renault, etc.



3/8"

	mm	Stages	Sides	g
150.9382	103	1	14	520

Oil filter wrench Ø 107.0 mm / 15 grooves

- For the quick and professional installation and dismantling of the oil filter cover when changing the oil filter insert
- Use according to the manufacturer's specification for torque
- Suitable for left and right side operation
- Internal square drive to DIN 3120 - ISO 1174
- For manual operation
- Painted surface

Application range: Volvo, Iveco, Renault, Scania, etc.



1/2"

	mm	Stages	Sides	g
150.9294	107	1	15	360

Oil filter wrench Ø 96.0 mm / 6 grooves

- For the quick and professional installation and dismantling of the oil filter cover when changing the oil filter insert
- Use according to the manufacturer's specification for torque
- Suitable for left and right side operation
- Internal square drive to DIN 3120 - ISO 1174
- For manual operation
- Painted surface

Application range: Renault, etc.



3/8"

	mm	Stages	Grooves	g
150.9429	96	1	6	220

Oil filter wrench Ø 106.0 mm / 15 grooves

- For the quick and professional installation and dismantling of the oil filter cover when changing the oil filter insert
- Use according to the manufacturer's specification for torque
- Suitable for left and right side operation
- Internal square drive to DIN 3120 - ISO 1174
- For manual operation
- Painted surface

Application range: Fiat, MAN, Scania, etc.



3/8"

	mm	Stages	Sides	g
150.9348	106	1	15	200

Oil filter wrench Ø 108.0 mm / 15 grooves

- For the quick and professional installation and dismantling of the oil filter cover when changing the oil filter insert
- Use according to the manufacturer's specification for torque
- Suitable for left and right side operation
- Internal square drive to DIN 3120 - ISO 1174
- For manual operation
- Painted surface

Application range: Volvo, etc.



3/8"

	mm	Stages	Sides	g
150.9349	108	1	15	220

Oil filter wrench Ø 100.0 mm / 15 grooves

- For the quick and professional installation and dismantling of the oil filter cover when changing the oil filter insert
- Use according to the manufacturer's specification for torque
- Suitable for left and right side operation
- Internal square drive to DIN 3120 - ISO 1174
- For manual operation
- Painted surface

Application range: Isuzu, Mitsubishi, etc.



3/8"

	mm	Stages	Sides	g
150.9335	100	1	15	150

Oil filter wrench Ø 106.0 mm / 15 grooves

- Ideally suited for installation and removal of hard to reach oil filter covers when changing the oil filter unit or the oil filter
- Use according to the manufacturer's specification for torque
- 1/2" internal square and external hexagon 21.0 mm
- Painted surface

Application range: Volkswagen, Mercedes, Porsche, BMW, Audi, Opel



1/2"

	mm	Stages	Sides	g
150.9293	106.0	1	15	200

Oil filter wrench Ø 108.0 mm / 18 grooves

- For the quick and professional installation and dismantling of the oil filter cover when changing the oil filter insert
- Use according to the manufacturer's specification for torque
- Suitable for left and right side operation
- Internal square drive to DIN 3120 - ISO 1174
- For manual operation
- Painted surface

Application range: Renault, etc.



3/8"

	mm	Stages	Grooves	g
150.9351	108	1	18	190

Oil filter wrench Ø 108.0 mm / 15 grooves

- For the quick and professional installation and dismantling of the oil filter cover when changing the oil filter insert
- Use according to the manufacturer's specification for torque
- Suitable for left and right side operation
- Internal square drive to DIN 3120 - ISO 1174
- For manual operation
- Painted surface

Application range Volvo, Iveco, Renault, Scania, etc.



	mm	Stages	Sides	g
150.9295	108,0	1	15	210

Oil filter wrench Ø 108.0 mm / 18 grooves

- For the quick and professional installation and dismantling of the oil filter cover when changing the oil filter insert
- Use according to the manufacturer's specification for torque
- Suitable for left and right side operation
- Internal square drive to DIN 3120 - ISO 1174
- For manual operation
- Painted surface

Application range Renault, Opel, etc.



	mm	Stages	Grooves	g
150.9296	108,0	1	18	210

Oil filter wrench Ø 109.0 mm / 6 grooves

- For the quick and professional installation and dismantling of the oil filter cover when changing the oil filter insert
- Use according to the manufacturer's specification for torque
- Suitable for left and right side operation
- Internal square drive to DIN 3120 - ISO 1174
- For manual operation
- Painted surface

Application range Fiat, Alfa Romeo, Lancia, Opel, etc.



	mm	Stages	Grooves	g
150.9383	109	1	6	380

Oil filter wrench Ø 135.0 mm / 18 grooves

- For the quick and professional installation and dismantling of the oil filter cover when changing the oil filter insert
- Use according to the manufacturer's specification for torque
- Suitable for left and right side operation
- Internal square drive to DIN 3120 - ISO 1174
- For manual operation
- Painted surface

Application range MAN, etc.



	mm	Stages	Sides	g
150.9297	135,0	1	18	510

OIL FILTER CAP WRENCH SET

Oil service wrench set for filter housing cover

- Ideally suited for installation and removal of hard to reach oil filter covers when changing the oil filter unit or the oil filter
- Use according to the manufacturer's specification for torque
- Suitable for left and right side operation
- Internal square drive to DIN 3120 - ISO 1174
- External drive hexagonal socket 21.0 mm
- For manual operation
- Painted surface
- In durable plastic storage case

Application range: Audi, BMW, Mercedes, Volkswagen, Opel, etc.



		g
150.9365	3 pcs Oil service wrench set for filter housing cover	320

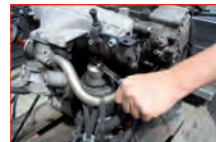
consists of:

	Suitable for	mm	Sides	g
150.9366	Mercedes Benz, Mazda	27	6	60
150.9367	VW, Audi, Opel	32	6	70
150.9368	Mercedes Benz, BMW, Ford, VW, Rover, Opel	36	6	80

Oil service wrench set for oil filter and filter housing covers

- Ideally suited for installation and removal of hard to reach oil filter covers when changing the oil filter unit or the oil filter
- Use according to the manufacturer's specification for torque
- Suitable for left and right side operation
- Internal square drive to DIN 3120 - ISO 1174
- Includes universal oil filter tension wrench for all standard filters
- For manual operation
- Painted surface
- In durable plastic storage case

Application range: Audi, BMW, Ford, Mazda, Mercedes, Toyota, Lexus, Porsche, Kia, Volvo, Seat, Hyundai, Mini, Volkswagen, Opel, etc.



		g
150.9210	9 pcs Oil service wrench set for oil filter and filter housing covers	3.14

consists of:

	Suitable for	mm	Sides	g
150.9211	Allion, Auris, Corolla, Prius, Vaux, etc	64,5	14	169
150.9212	Toyota, Lexus (6 Zyl.)	64,5	14	144
150.9213	Hyundai, KIA	88,8	15	289
150.9214	BMW 3+5+X, Volvo	86,6	16	293
150.9215	Audi, BMW, Ford, Toyota, VW, Porsche, Mercedes Benz	74,2	14	172
150.9216	universal	63-83		378
150.9217	Mercedes, Smart	27	6	118
150.9218	GM, Opel, Mercedes	32	6	146
150.9219	Mercedes Diesel, BMW, Mini, Ford	36	6	188



Oil service set for oil filter and filter housing cover

- Ideally suited for installation and removal of hard to reach oil filter covers when changing the oil filter unit or the oil filter
- Use according to the manufacturer's specification for torque
- Suitable for left and right side operation
- Internal square drive to DIN 3120 - ISO 1174
- External drive hexagonal socket 21.0 mm
- Includes 1/2" universal oil filter strap wrench
- For manual operation
- Painted surface
- In durable plastic storage case

Application range: Mercedes, MAN, Scania, Renault, Opel, Iveco, Volkswagen, etc.



1/2"

150.9290	9 pcs	Oil service set for oil filter and filter housing cover	3.40

consists of:

	Suitable for	mm	Grooves	Sides	
150.9291	Mercedes Benz, Scania	36,0	6	70	
150.9292	Audi, BMW, Ford, Lancia, Mazda, Mercedes Benz, Fiat	74,0	14	140	
150.9293	Volkswagen, Mercedes Benz, Porsche, BMW, Audi, Opel	106,0	15	200	
150.9294	Volvo, Iveco, Renault, Scania	107	15	360	
150.9295	Volvo, Iveco, Renault, Scania	108,0	15	210	
150.9296	Renault, Opel	108,0	18	210	
150.9297	MAN	135,0	18	510	
150.9298	Universal	160,0		140	
150.9299	Universal	24,0		270	



Oil service set for oil filter and filter housing cover

- Ideally suited for installation and removal of hard to reach oil filter covers when changing the oil filter unit or the oil filter
- Use according to the manufacturer's specification for torque
- Suitable for left and right side operation
- Internal square drive to DIN 3120 - ISO 1174
- External drive hexagonal socket 21.0 mm
- For manual operation
- Painted surface
- In durable plastic storage case

Application range: BMW, Daihatsu, Ford, GM, Honda, Mazda, Mercedes, Opel, Porsche, Renault, Saab, Subaru, Toyota, Volkswagen, etc.



3/8"

150.9320	15 pcs	Oil service set for oil filter and filter housing cover	2.83

consists of:

	Suitable for	mm	Grooves	Sides	
150.9321	Daihatsu, Toyota, Nissan, Fiat, Honda	65	6	14	150
150.9322	Mazda, Ford, Subaru	68	14	320	
150.9323	Toyota, Lexus	73	14	150	
150.9324	Ford, Opel, VW, Audi, Mercedes Benz	74/76	15	170	
150.9325	VW, Mercedes Benz, Porsche, BMW, Audi, Opel	76	14	150	
150.9326	Nissan, Honda, Opel, Mazda	80	15	150	
150.9327	Mazda, Mitsubishi, Volvo, Nissan, Honda	93	15	150	
150.9329	Ford	93	36		150
150.9330	Daihatsu, Toyota	65/67	14	150	
150.9331	Subaru, Toyota, Honda, Mazda, Nissan	80/82	15	150	
150.9332	Honda, Mitsubishi, Isuzu	90	15	150	
150.9333	VW, Audi, Ford, Isuzu, Mercedes Benz, Opel	75/77	15	150	
150.9334	Ford	76	30	150	
150.9335	Isuzu, Mitsubishi	100	15	150	

Oil service set for oil filter and filter housing cover

- Ideally suited for installation and removal of hard to reach oil filter covers when changing the oil filter unit or the oil filter
- Use according to the manufacturer's specification for torque
- Suitable for left and right side operation
- Internal square drive to DIN 3120 - ISO 1174
- External drive hexagonal socket 21.0 mm
- Includes 1/2" oil filter pin
- For manual operation
- Painted surface
- In durable plastic storage case

Application range: Audi, BMW, Fiat, GM, Lancia, Mercedes, Nissan, Opel, Porsche, Renault, Saab, Volvo, Volkswagen, etc.



3/8"

150.9310	16 pcs	Oil service set for oil filter and filter housing cover	2.30

consists of:

	Suitable for	mm	Grooves	Sides	
150.9314	Universal	65-120		350	
150.9324	Ford, Opel, VW, Audi, Mercedes Benz	74/76	15	170	
150.9325	VW, Mercedes Benz, Porsche, BMW, Audi, Opel	76	14	150	
150.9327	Mazda, Mitsubishi, Volvo, Nissan, Honda	93	15	150	
150.9336	Fiat, Renault	66	6	190	
150.9338	Fiat, Renault, Mercedes Benz	76	12	190	
150.9339	Fiat, Lancia	76	8	170	
150.9340	Universal	21		153	
150.9342	VW, Audi, Renault, Peugeot, Citroën	86	18	143	
150.9343	Volvo S40/S80	86	16	180	
150.9344	Fiat, Lancia	92	10	180	
150.9345	VW, Audi	93	45	180	
150.9347	VW, Audi, Renault	96	18	190	
150.9348	Fiat	106	15	200	
150.9349	Volvo	108	15	220	

Oil service set for oil filter and filter housing cover

- Ideally suited for installation and removal of hard to reach oil filter covers when changing the oil filter unit or the oil filter
- Use according to the manufacturer's specification for torque
- Suitable for left and right side operation
- Internal square drive to DIN 3120 - ISO 1174
- External drive hexagonal socket 21.0 mm
- Includes 1/2" oil filter pin
- For manual operation
- Painted surface
- In durable plastic storage case

Application range: Alfa Romeo, Audi, BMW, Daihatsu, Fiat, Ford, GM, Honda, Lancia, Lexus, Mazda, Mercedes, Mitsubishi, Nissan, Opel, Porsche, Renault, Saab, Subaru, Toyota, Volvo, Volkswagen, etc.



150.9350	30 pcs	Oil service set for oil filter and filter housing cover	6.67
----------	--------	---	------

consists of:

	Suitable for	mm	Grooves	Sides	
150.9313	Universal	63-102			370
150.9321	Daihatsu, Toyota, Nissan, Fiat, Honda	65	6	14	150
150.9322	Mazda, Ford, Subaru	68		14	320
150.9323	Toyota, Lexus	73		14	150
150.9324	Ford, Opel, VW, Audi, Mercedes Benz	74/76		15	170
150.9325	VW, Mercedes Benz, Porsche, BMW, Audi, Opel	76		14	150
150.9326	Nissan, Honda, Opel, Mazda	80		15	150
150.9327	Mazda, Mitsubishi, Volvo, Nissan, Honda	93		15	150
150.9329	Ford	93	36		150
150.9330	Daihatsu, Toyota	65/67		14	150
150.9331	Subaru, Toyota, Honda, Mazda, Nissan	80/82		15	150
150.9332	Honda, Mitsubishi, Isuzu	90		15	150
150.9333	VW, Audi, Ford, Isuzu, Mercedes Benz, Opel	75/77		15	150
150.9334	Ford	76	30		150
150.9335	Isuzu, Mitsubishi	100		15	150
150.9336	Fiat, Renault	66	6		190
150.9337	Audi, GM, Rover, Chrysler	74		15	220
150.9338	Fiat, Renault, Mercedes Benz	76	12		190
150.9339	Fiat, Lancia	76	8		170
150.9340	Universal	21			153
150.9341	Nissan, Ford, Toyota	78		15	170
150.9342	VW, Audi, Renault, Peugeot, Citroën	86		18	143
150.9343	Volvo S40/S80	86		16	180
150.9344	Fiat, Lancia	92		10	180
150.9345	VW, Audi	93	45		180
150.9346	Toyota, Alfa, GM, Ford, Ford, Chrysler	95		15	190
150.9347	VW, Audi, Renault	96		18	190
150.9348	Fiat	106		15	200
150.9349	Volvo	108		15	220
150.9351	Renault	108		18	190

OIL FILTER CUTTER

Oil filter cutter

- Ideally suited for cleanly cutting the oil filter
- Suitable for oil filters from Ø 60 - 120 mm
- Can therefore limit premature damage
- Contaminants and shavings can be discovered early
- With mounting possibility on the work bench
- Includes t-bar
- Special steel



	Length mm	Height mm	Width mm	
150.9203	280.0	35.0	120.0	730

OIL DIP STICK

Oil control rod for Mercedes Benz

- Ideal for the easy, quick and correct control of engine and automatic transmission oil levels
- Essential following an oil change, since vehicles are shipped without a measuring device and only have a plug
- Time-saving and reliable measurements
- With plastic hand grip



150.9280	4 pcs	Oil control rod for Mercedes Benz	380
----------	-------	-----------------------------------	-----

consists of:

		Transmission gear ID	
150.9281	Oil dip stick, 1220 mm	772.6_L, G, P, V	160
150.9282	Oil dip stick, 920 mm	772.7_P, 772.8_P, 716.5_V	120
150.9283	Oil dip stick, 930 mm	103, 104, 111, 119, 120, 137, 603	40
150.9284	Oil dip stick, 930 mm	M112, 113, 646, 647, 648	40

Oil dip stick for VAG

- Ideal for the easy, quick and correct control of engine oil levels
- Adjustable oil measure as a tool for checking oil levels electronically
- Essential following an oil change, since vehicles are shipped without a measuring device and only have a plug
- For checking after an oil change or replacing the oil sensor
- Optimal for recalibrating combi-instruments
- Time-saving and reliable measurements

Application range: Audi A4 (> 2008)/Audi A5 (> 2008)/Audi A7/Audi A8/Audi Q5/Volkswagen Touareg
Engines: 3.2-4V petrol/3.2 FSI/2.0 TFSI/3.0 TDI



	L mm	
150.9285	630.0	30

OIL FILLING AND EMPTYING PUMP

Mini transfer pump

- Ideal aid for transferring in emergencies
- Suitable for battery acid, fuels, oils and distilled water
- The hoses are attached to the balloon holder using supplied hose clamps
- Acid-resistant
- Special plastic



	Tube inner Ø mm	tube length mm	
150.1665	8.0	2 x 900	320

Syringe for fluid change 0.2 l

- Ideal tool for decanting, removing or dosing liquids to transmissions, power steering, hydraulics, engines, etc.
- Suitable for fuel oil, water and antifreeze
- Fine dosing
- Overflowing material can be pumped back problem-free
- Includes rubber hose
- Robust metallic design



	Tube inner Ø mm	Hose external Ø mm	tube length mm	housing length mm	
150.1684	0.2	8	10	290	290 365

Transfer pump

- Ideal aid for easy transferring and pumping
- Suitable for battery acid, fuels, oils and distilled water
- Acid-resistant
- With high quality pump body and reinforced pump handle
- Special plastic



	Tube inner Ø mm	Tube length mm	kg
150.1660	12.0	2 x 1.300	465

Universal transmission oil filling system set incl. 15 piece adapter set

- Ideal for filling transmission, distributor transmission and differentials of different vehicle manufacturers with oil
- Large coverage of many vehicle manufacturers in particular with universal adapter
- Many transmission cannot be filled without this tool
- Optimal for narrow places or hard-to-reach places
- Includes 15 piece adapter set with various angle tails for correct and economic filling
- Quick filling by unscrewing the pump units is possible
- Precise hand pump
- Includes return flow function
- For difficult-to-access areas
- Secure stand thanks to large base
- Container with filling level scale
- Easy to use and saves time

Application range: Audi, Ford, BMW, Mercedes, Volkswagen, Škoda, Volvo, Toyota, Lexus, Nissan, Infinity etc.



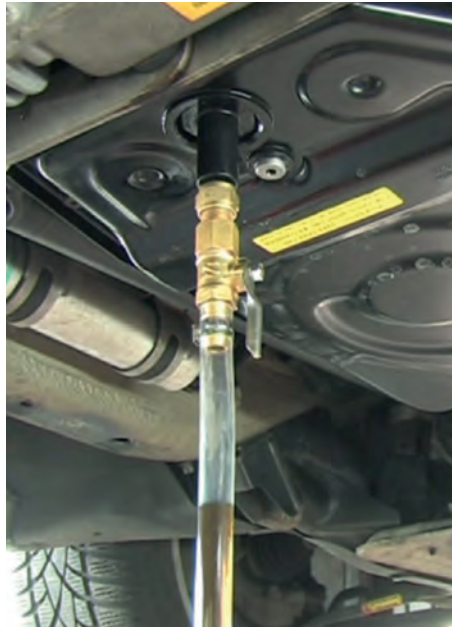
Technical data:

Capacity:	7.5
Tube length:	1600.0 mm
Tube diameter:	1/2"
Quantity per stroke:	80 cc
Viscosity:	- SAE 140

		kg
150.9275	16 pcs Universal transmission oil filling system set incl. 15 piece adapter set	4.80

consists of:

		kg
150.9258	Transmission oil filling device without adapter	3.50
150.9279	Transmission oil filling adapter set 15 piece	1.30



Vacuum fluid extractor suction pump 9.5 litre

- Ideal for quick, clean and simple suction, intake and emptying of fluids
- Suitable for engine oil, transmission oil, hydraulic oil, brake fluid, water, etc.
- For pneumatic use with a compressor or manual use with the integrated hand pump
- Select a suitable probe and suck easily using the vacuum principle
- Suction process automatically stopped when housing is full, preventing fluids from spilling over
- With integrated pressure relief valve for more safety
- With high-quality pump housing and strengthened pump head
- Includes 4 probes for different uses
- Ideally suited to hard-to-reach places thanks to the included, long suction hose
- The suction hose is resistant to petrol and oil
- Polyethylene

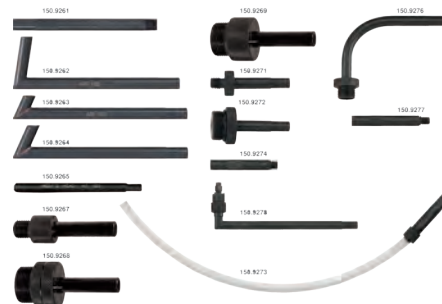
Application range: Passenger cars, transporters and MPVs, commercial vehicles, tractors, agricultural and construction machinery, industrial uses



Universal transmission oil filling adapter set

- Ideal for filling transmission, distributor transmission and differentials of different vehicle manufacturers with oil
- Large coverage of many vehicle manufacturers in particular with universal adapter
- Many transmission cannot be filled without this tool
- Optimal for narrow places or hard-to-reach places
- With various angle tails for correct and economic filling
- For difficult-to-access areas
- Easy to use and saves time
- In durable plastic storage case

Application range: Audi, Ford, BMW, Mercedes, Volkswagen, Škoda, Volvo, Toyota, Lexus, Nissan, Infinity etc.



		kg
150.9279	15 pcs Universal transmission oil filling adapter set	1.30

consists of:

		kg
150.9261	Adapter pipe straight, Ford, Ø 10 GL=120 x AL = 110 with thread	43
150.9262	Angled adapter pipe, universal, Ø 10 GL = 140 x 45 mm	65
150.9263	Angled adapter pipe, VAG, Ø 10 GL = 150 x 18 mm	58
150.9264	Angled adapter pipe, VAG, Ø 10 GL = 150 x 30 mm	61
150.9265	Adapter pipe straight, VAG, Ø 10 GL = 100 x AL = 85 with thread	33
150.9267	Screw adapter, Mercedes transmission number 722.9, M12 x 1.5	53
150.9268	Screw adapter, VAG DSG, M24 x 1.5	110
150.9269	Screw adapter, VAG CVT, M22 x 1.5	90
150.9271	Screw adapter, Škoda, M18 x 1.5	65
150.9272	Screw adapter, Škoda/VAG, M30 x 1.5	150
150.9273	Flexible universal adapter, 300 mm	35
150.9274	Adapter line for Volvo, 5/16"-24"	22
150.9276	Adapter line for Toyota/Lexus, M18 x 1.5	89
150.9277	Adapter line for Nissan/Infinity, M8 x 1.0	25
150.9278	Angled ATF adapter for Volkswagen Passat	93

Technical data:

Work pressure:	5-11,5 bar
Capacity:	9.5 l
Operating temperature:	+0°C to +55°C
Filling tube length:	1.5 m
Max. flow rate:	125 l/min

		kg
160.0790	5 pcs Vacuum fluid extractor suction pump 9.5 litre	5.00

consists of:

		kg
160.0791	Vacuum fluid extractor suction pump 9.5 litre	3708
160.0792	Adaptor and tube 4x8mm x1,5m	200
160.0793	Main probe 7.8 x 9.8 mm x 1 m	200
160.0794	Probe 5.3 x 6.7 mm x 1 m	200
160.0795	Probe 3.5 x 4.5 mm x 1 m	200



OIL FILLING CONTAINER

Oil release adaptor hose for VAG 1.8 + 2.0 gasoline car with stop function

- Ideally suited for a clean, correct and environmentally-friendly draining of the engine oil via the oil filter housing
- The adaptor opens a valve when screwed into the oil filter housing and ensures controlled draining
- With flow stop at the end of the hose
- Reduces loss and dirtying of oily engines
- Flexible, transparent hose

Application range: Audi, Seat, Škoda and Volkswagen with 1.8 l and 2.0 l engines with engine codes AXW/ BLY/ BVZ/ BVY/ BLX/ BLR/ BVX



	Length mm	Ø Tube mm	
550.1291	550.0	14 x 16	137

Measuring cup set

- Configuration of practical measuring cup sizes
- Versatile application possibilities
- Transparent
- Break-proof
- Red primed scale division
- Resistant to oil, petrol and acid
- With handle and spout
- PE (polyethylene)

Scales: L/ml, cups, Oz, quart



150.9205	3 pcs	250 - 500 - 1.000 ml	227



Oil can with flexible outlet spout

- For a wide range of uses
- Flexible, funnel-shaped spout allows for a clean drainage
- Suitable for oil, chemicals, petrol, acid, anti-freeze fluid and non-acidic fluids
- Break-resistant
- Steady
- Graduated scale
- With practical carry handle
- Special plastic



		Spout	
150.9234	1	150.9236	150
150.9235	2	150.9236	250



Funnel set

- Configuration of practical funnel sizes
- Versatile application possibilities
- Red
- Break-proof
- Resistant to oil, petrol and acid
- Grip strap for convenient use
- HDPE (high density polyethylene)



150.9240	5 pcs	Ø 50 - Ø 75 - Ø 95 - Ø 115 - Ø 150 mm	251

Universal funnel set

- Special flexible funnel for hard-to-reach places
- For a wide range of uses
- With bayonet connection and seal
- Direct connection to the oil fill opening
- No more lengthy and time-consuming pouring
- Includes clear hose with sealing plug on the end of the hose
- Bottle with handle for comfortable use
- Reduces loss and dirtying of oily engines
- Special plastic



		Ø Tube mm		Ø mm	tube length mm	
150.9230	3 pcs	14x16	1	160	400	240

Flexible funnel with aluminium body

- Ideally suited to a clean and control draining of all fluids, e.g. oil, coolant, brake fluid, fuel, etc.
- Resistant to petrol, diesel, oil, coolant, hydraulic and brake fluid
- Also suitable as a funnel for filling
- Shape is maintained and can be altered at any time
- Free malleable, therefore can be adapted for extremely tight spaces
- Problems with draining fluids are a thing of the past
- The heavy-duty construction can be fit to any desired shape and used again
- Easy to clean
- Temperature resistance of -34 to +232 °C
- Aluminium frame
- Outer skin made from nitrile rubber



		Length mm	Width mm	
150.9303		372.0	170.0	240

1
2
3
4
5
6
7
8
9
10
11
12
13
14
15
16
17
18
19
20
21
22
23
24
25
26

Oil fill funnel set

- Ideally suited for a clean, correct and environmentally-friendly filling
- Special narrower funnel with seal
- Direct and tight fitting with the oil fill opening
- No more lengthy and time-consuming pouring
- Prevents loss and dirtying from drained oil on the engine block or exhaust manifold
- Includes bayonet and VAG MQB platform adapter
- No play assembly on the engine
- Aluminium plug system design
- Special plastic
- Optional expandable plug system



150.9525	3 pcs	1	940

consists of:

150.9526	Oil fill funnel, 1 litre	253
150.9528	Universal bayonet adapter for oil fill funnel	260
150.9539	VAG MQB platform adapter for oil fill funnel	167

Oil fill funnel set with turnable arm

- Ideally suited for a clean, correct and environmentally-friendly filling
- Special narrower funnel with seal
- Direct and tight fitting with the oil fill opening
- No more lengthy and time-consuming pouring
- Prevents loss and dirtying from drained oil on the engine block or exhaust manifold
- With turnable arm for hard to reach places
- Includes bayonet and VAG MQB platform adapter
- No play assembly on the engine
- Aluminium plug system design
- Special plastic
- Optional expandable plug system



150.9535	4 pcs	1	1.26

consists of:

150.9526	Oil fill funnel, 1 litre	253
150.9527	Arm for oil fill funnel	309
150.9528	Universal bayonet adapter for oil fill funnel	260
150.9539	VAG MQB platform adapter for oil fill funnel	167

Oil pouring funnel

- Ideally suited with the funnel for clean, correct and environmentally friendly filling alongside the adapter
- Special narrower funnel with seal
- Direct and secure connection with the oil fill opening via the adapter
- No more lengthy and time-consuming pouring
- Prevents loss and dirtying from drained oil on the engine block or exhaust manifold
- Aluminium plug system design
- Special plastic
- Optional expandable plug system
- Can be used alongside an adapter



150.9526	1		253



Arm for oil fill funnel

- Ideally suited with the funnel and adapter for clean, correct and environmentally friendly filling
- Special turnable arm for hard to reach places with a seal
- In connection with the funnel and adapter direct and secure connection with the oil fill opening
- No more lengthy and time-consuming pouring
- Prevents loss and dirtying from drained oil on the engine block or exhaust manifold
- Aluminium plug system design
- Optional expandable plug system
- Can be used alongside an oil fill funnel and adapter



150.9527	Length mm	309
	270.0	

Universal bayonet adapter for oil fill funnel

- Ideally suited with the funnel for clean, correct and environmentally friendly filling
- Special bayonet adapter with seal
- Direct and tight fitting with the oil fill opening
- No more lengthy and time-consuming pouring
- Prevents loss and dirtying from drained oil on the engine block or exhaust manifold
- Aluminium plug system design
- Optional expandable plug system
- For use alongside the oil fill funnel

Application range: Audi, BMW, Ford, Mercedes, Škoda, Seat, Volvo and Volkswagen



150.9528	Ø mm	260
	60,0	

VAG MQB platform adapter for oil fill funnel

- Ideally suited with the funnel for clean, correct and environmentally friendly filling
- Special adapter with seal
- Direct and tight fitting with the oil fill opening
- No more lengthy and time-consuming pouring
- Prevents loss and dirtying from drained oil on the engine block or exhaust manifold
- Aluminium plug system design
- Optional expandable plug system
- For use alongside the oil fill funnel

Application range: Audi A3 (8V), Seat Leon (5F), Škoda Octavia 3, Volkswagen Golf 7

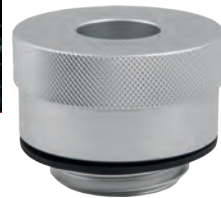


150.9539	Ø mm	167
	54,0	

Subaru adapter for oil filling funnel

- Ideally suited with the funnel for clean, correct and environmentally friendly filling
- Special adapter with seal
- Direct and tight fitting with the oil fill opening
- No more lengthy and time-consuming pouring
- Prevents loss and dirtying from drained oil on the engine block or exhaust manifold
- Aluminium plug system design
- Optional expandable plug system
- For use alongside the oil fill funnel

Application range: Subaru

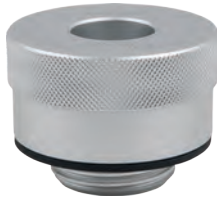


150.9529	Thread	236
	Ø mm	
	M 20 x 2,5	61,0

Toyota and Lexus adapter for oil fill funnel

- Ideally suited with the funnel for clean, correct and environmentally friendly filling
- Special adapter with seal
- Direct and tight fitting with the oil fill opening
- No more lengthy and time-consuming pouring
- Prevents loss and dirtying from drained oil on the engine block or exhaust manifold
- Aluminium plug system design
- Optional expandable plug system
- For use alongside the oil fill funnel

Application range: Toyota and Lexus



	Thread	Ø mm	g
150.9531	M24 x 1,5	61,0	224

Toyota and Lexus bayonet adapter for oil fill funnel

- Ideally suited with the funnel for clean, correct and environmentally friendly filling
- Special bayonet adapter with seal
- Direct and tight fitting with the oil fill opening
- No more lengthy and time-consuming pouring
- Prevents loss and dirtying from drained oil on the engine block or exhaust manifold
- Aluminium plug system design
- Optional expandable plug system
- For use alongside the oil fill funnel

Application range: Toyota and Lexus



	Ø mm	g
150.9534	61,0	260

Mazda adapter for oil filling funnel

- Ideally suited with the funnel for clean, correct and environmentally friendly filling
- Special adapter with seal
- Direct and tight fitting with the oil fill opening
- No more lengthy and time-consuming pouring
- Prevents loss and dirtying from drained oil on the engine block or exhaust manifold
- Aluminium plug system design
- Optional expandable plug system
- For use alongside the oil fill funnel

Application range: Mazda



	Thread	Ø mm	g
150.9532	M24 x 1,5	61,0	240

Honda, Nissan and Jaguar adapter for oil fill funnel

- Ideally suited with the funnel for clean, correct and environmentally friendly filling
- Special adapter with seal
- Direct and tight fitting with the oil fill opening
- No more lengthy and time-consuming pouring
- Prevents loss and dirtying from drained oil on the engine block or exhaust manifold
- Aluminium plug system design
- Optional expandable plug system
- For use alongside the oil fill funnel

Application range: Honda, Nissan and Jaguar



	Thread	Ø mm	g
150.9533	M24 x 1,5	61,0	235

Porsche adapter for oil filling funnel

- Ideally suited with the funnel for clean, correct and environmentally friendly filling
- Special adapter with seal
- Direct and tight fitting with the oil fill opening
- No more lengthy and time-consuming pouring
- Prevents loss and dirtying from drained oil on the engine block or exhaust manifold
- Aluminium plug system design
- Optional expandable plug system
- For use alongside the oil fill funnel

Application range: Porsche 911 (1984-1989), 911 Turbo (1984-1994), 924S (1985-1988), 928 (1987-1995), 944 (1983-1989), 944 S (1986-1991), 944 S2 (1989-1992), 944 Turbo (1985-1991), 968 (1992-1995), 911 Carrera 2 (1989-1993), 911 Carrera 4 (1989-1993)



	Ø mm	g
150.9536	65,0	200

Porsche adapter for oil filling funnel

- Ideally suited with the funnel for clean, correct and environmentally friendly filling
- Special adapter with seal
- Direct and tight fitting with the oil fill opening
- No more lengthy and time-consuming pouring
- Prevents loss and dirtying from drained oil on the engine block or exhaust manifold
- Aluminium plug system design
- Optional expandable plug system
- For use alongside the oil fill funnel

Application range: Porsche Carrera (2005-2008), Carrera S (2005-2008), Carrera 4 (2006-2008), Carrera 4S (2006-2008), 911 Turbo (2007-2009), Boxter (2005-2008), Boxter S (2005-2008), Cayman (2006-2008), Cayman S (2006-2008)



	Ø mm	g
150.9537	65,0	220

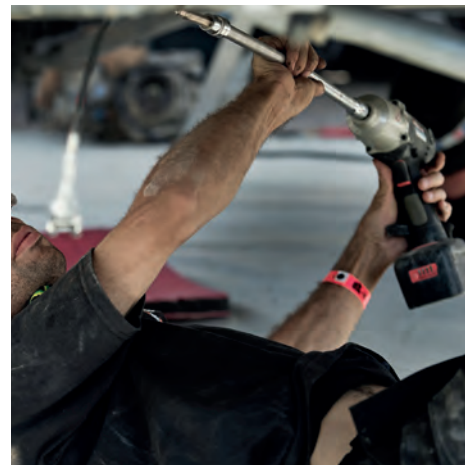
Universal adapter for oil fill funnel

- Ideally suited with the funnel for clean, correct and environmentally friendly filling
- Special adapter with seal
- Direct and tight fitting with the oil fill opening
- No more lengthy and time-consuming pouring
- Prevents loss and dirtying from drained oil on the engine block or exhaust manifold
- Aluminium plug system design
- Optional expandable plug system
- For use alongside the oil fill funnel

Application range: Cadillac, Chevy Cobalt, Ford Explorer, GMC Sierra, Hyundai Santa Fe and Tucson, Jaguar 5.0 I V8 engines, Land Rover 5.0 I V8 engines, Mazda CX-9 3.7 I, Saab 9-3



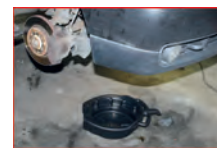
	Ø mm	g
150.9538	61,0	180



OIL COLLECTION PAN

Oil drain pan 7.5 litres

- With three carry handles
- Safe and clean pouring with the self-contained overflow edge and spout
- Ideally suited to collecting different fluids
- Suitable for oil, chemicals, petrol, acid and anti-freeze fluid
- Also suitable for cleaning parts
- Practical, quick and friendly to the environment
- Shock-proof



	Ø mm	H mm	g
150.9359	385,0	130,0	620

Oil drain pan 8 litres

- With three carry handles
- Safe and clean pouring with the spout
- Ideally suited to collecting different fluids
- Suitable for oil, chemicals, petrol, acid and anti-freeze fluid
- Also suitable for cleaning parts
- Practical, quick and friendly to the environment
- Screwed connection with rubber seal for safe transport
- Shock-proof



	B mm	H mm	L mm	kg
150.9357	340.0	120.0	600.0	1.06

Oil drain pan 17 litres

- With three carry handles
- Safe and clean pouring with the self-contained overflow edge and spout
- Ideally suited to collecting different fluids
- Suitable for oil, chemicals, petrol, acid and anti-freeze fluid
- Also suitable for cleaning parts
- Practical, quick and friendly to the environment
- Shock-proof



	Ø mm	H mm	kg
150.9360	445,0	145.0	1.16

Oil drain pan 17 litres

- With three carry handles
- Safe and clean pouring with the self-contained overflow edge and spout
- Ideally suited to collecting different fluids
- Suitable for oil, chemicals, petrol, acid and anti-freeze fluid
- Also suitable for cleaning parts
- Practical, quick and friendly to the environment
- Shock-proof



	Ø mm	H mm	kg
150.9361	445,0	145.0	1.16

Mobile oil drain pan, 30 litres, extra flat with castors

- With five carry handles
- 12.0 cm high, extra flat edges
- Safe and clean pouring with the closed contained and spout
- Ideally suited to collecting different fluids
- Suitable for oil, chemicals, petrol, acid and anti-freeze fluid
- Also suitable for cleaning parts
- With four steerable castors
- Practical, quick and friendly to the environment
- Includes removable sieve
- Screwed connection with rubber seal for safe transport
- Shock-proof



	B mm	H mm	L mm	kg
150.9354	600.0	120.0	850.0	5.60



Oil drain pan 55 litres, extra flat

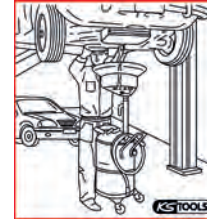
- With four carry handles
- 11.0 cm high, extra flat edges
- Safe and clean pouring with the self-contained overflow edge and spout
- Ideally suited to collecting different fluids
- Suitable for oil, chemicals, petrol, acid and anti-freeze fluid
- Also suitable for cleaning parts
- Practical, quick and friendly to the environment
- Shock-proof
- Polyethylene



	L mm	B mm	H mm	kg
150.9358	1030.0	724.0	110.0	6.80

Mobile oil draining device 60 litre

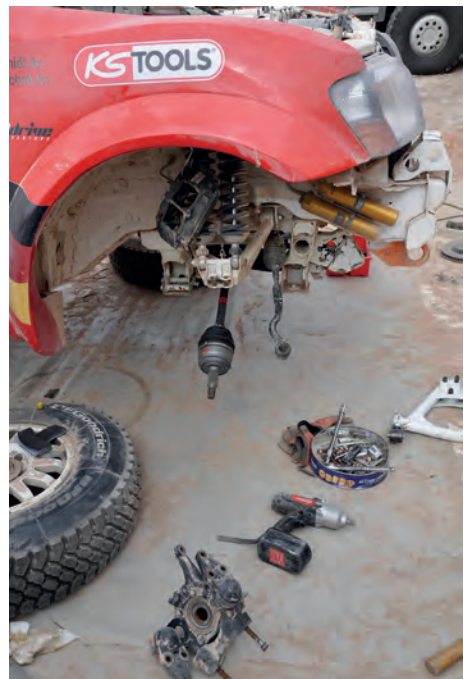
- Basic unit for old oil capture and re-filling
- Pneumatic pressure emptying with manometer and safety valve
- Emptying takes approximately 3 minutes at 0.8 bar
- Heavy deposits can also be removed via a plate on the underside
- Mobile and connectible container with extra-large plastic wheels
- With carry handle
- Stop cock and clamping screws to release pressure
- Extremely manoeuvrable and ideal for workshop design
- Centrally mounted and height-adjustable round drip pan
- Side filling display with measuring scales
- Includes clear fabric hose for draining



Technical data:

Capacity of container:	60 l
Capacity of catch:	ca.16 l
Collection container dimensions:	490 x 580 x 1040 mm
Collection pan dimensions:	Ø 380 mm
Height adjustment:	1040 - 1700 mm

	kg
160.0001	32.00



CLIP FINDER.COM



1:1

AUDI | BMW | CHRYSLER | CITROËN | FIAT | FORD | GM | HONDA | LEXUS | MAZDA |
MERCEDES | MITSUBISHI | MORRIS | NISSAN | OPEL | PEUGEOT | RENAULT | TOYOTA |
TRIUMPH | VOLKSWAGEN AUDI GROUP | VOLVO



kstools.com



Innovation is
our mission!