

# K15



**KS TOOLS**







Innovation is  
our mission!



	PAGE
WIPER ARM DISASSEMBLY	552 - 554
WASHER NOZZLE TOOL AND MAGNET LIFTER	554 - 555
DASHBOARD PANEL	556
INTERIOR AND WING MIRROR	556 - 557
SENSORS	557 - 558
PLASTIC WEDGES	558 - 560
TRANSPORT AND STORAGE	560 - 561
PLATFORM	561
REMOVAL TOOL - NON GLUED CAR WINDSCREENS	561 - 562
PANEL BAG	562
REMOVAL TOOL - GLUED CAR WINDSCREENS	563 - 566
SUCTION PADS	567 - 568
GLASS REPAIR	568 - 569
SCRAPERS	569 - 570
NOZZLE CARTRIDGE PLIERS	570
HAND PISTOL CARTRIDGES	571
CORDLESS CARTRIDGE GUN	571
PRESSURISED AIR PISTOL CARTRIDGES	572
ASSEMBLY SPATULA	572
AID	572



## WIPER ARM DISASSEMBLY

### Wiper arm bit socket for tamper-proof TX screws for BMW

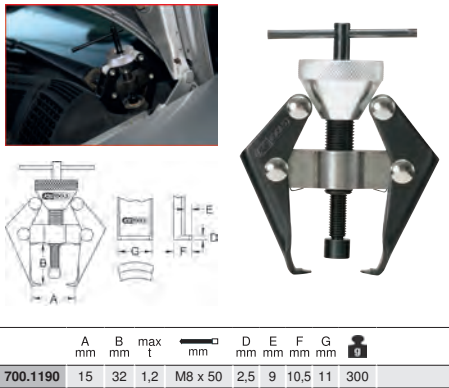
- Tamper-proof TX
- Ideally suited to the assembly and disassembly of windscreen wiper arms
- Also ideal for setting the contact pressure, e.g. after replacing the windscreen
- Tamper-proof for the seating of the windscreen wiper bearing axle
- Chrome vanadium

**Application range:** BMW E31, E32, E34, E38, E39



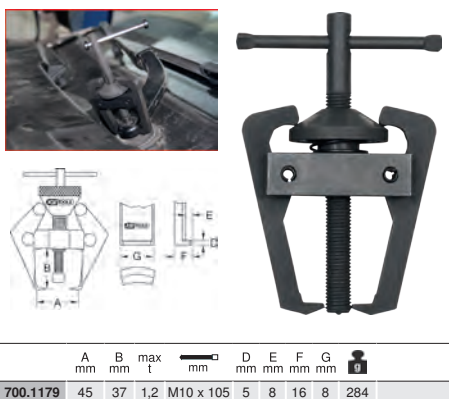
### Universal windscreen wiper arm puller 2-jaw with t-bar

- 2-jaw
- Ideally suited to the protective removal of windscreen wiper arms
- With t-bar
- With external, narrow socket for tight spaces
- With conical self-tensioning clamping screws for proportional tension force distribution
- Self-centring jaw puller
- Extremely robust spindle with inductively hardened thread
- Special steel



### Universal windscreen wiper arm puller 2-jaw with t-bar

- Tough design
- 2-jaw
- Ideally suited to the protective removal of windscreen wiper arms
- With t-bar
- With narrow socket for tight spaces
- With conical self-tensioning clamping screws for proportional tension force distribution
- Self-centring jaw puller
- Extremely robust spindle with inductively hardened thread
- Special steel



### Volkswagen and Porsche windscreen wiper arm puller 2-jaw with t-bar

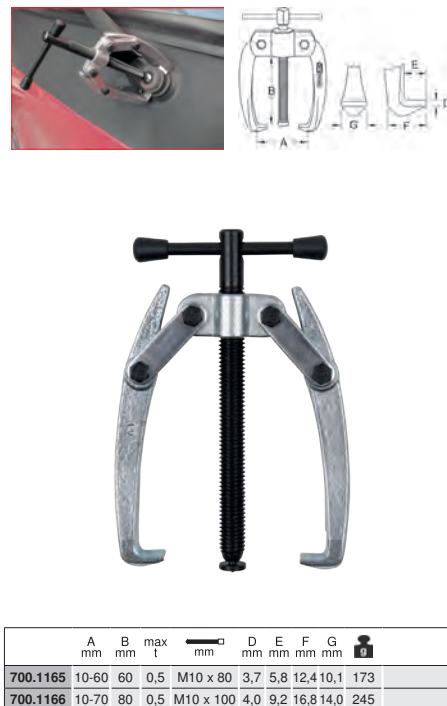
- 2-jaw
- Ideally suited to the protective removal of windscreen wiper arms
- With t-bar
- Automatic gripping of hooks
- Extremely robust spindle with inductively hardened thread
- Screwed on
- Robust hooks
- Special steel

**Application range:** Volkswagen Touareg, Porsche Cayenne and other SUVs, Ford Galaxy, Seat Alhambra



### Universal windscreen wiper arm puller 2-jaw with t-bar

- 2-jaw
- Ideally suited to the protective removal of windscreen wiper arms
- With t-bar
- Automatic gripping of hooks
- Extremely robust spindle with inductively hardened thread
- Screwed on
- Robust hooks
- Special steel



### VAG windscreen wiper arm puller 2-jaw

- 2-jaw
- Ideally suited to the protective removal of windscreen wiper arms
- Hollow puller spindle for damage-free support on the wiper arm shaft with washer nozzle
- Extremely robust spindle with inductively hardened thread
- Prevents damage to the bodywork and the windscreen wiper arm
- Internal square drive to DIN 3120 - ISO 1174
- Special steel

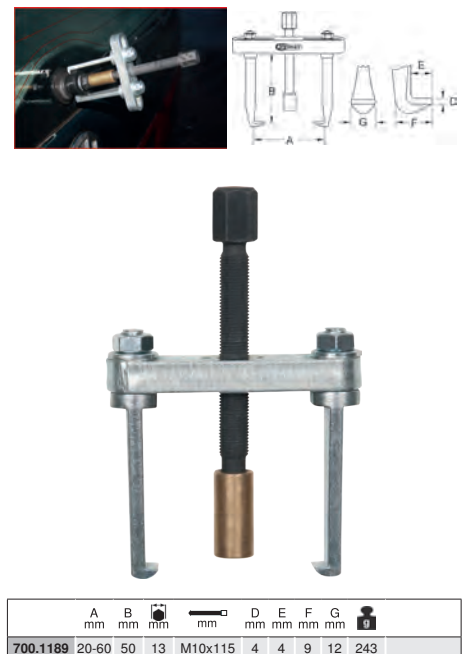
**Application range:** especially for VAG rear windscreen wiper with integrated washer nozzle



### VAG, Ford and Mercedes windscreen wiper arm puller 2-jaw

- 2-jaw
- Ideally suited to the protective removal of windscreen wiper arms
- Hollow puller spindle with brass cover for damage-free support on the wiper arm shaft with washer nozzle
- Ball bearing mounted centring point
- Extremely robust spindle with inductively hardened thread
- Spindle guidance is carried out in a moving sleeve
- Prevents damage to the bodywork and the windscreen wiper arm
- Internal square drive to DIN 3120 - ISO 1174
- Special steel

**Application range:** especially for VAG, Ford Galaxy, Seat Alhambra, Mercedes A and B class rear windscreen wiper with integrated washer nozzle



**Universal windscreen wiper arm puller with pulling yoke**

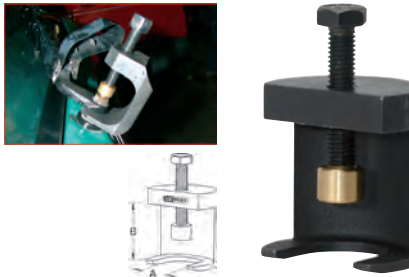
- With pulling yoke
- Ideally suited to the protective removal of windscreen wiper arms
- Pulling spindle for damage-free support to the rear wiper blades
- Extremely robust spindle with inductively hardened thread
- Prevents damage to the bodywork and the windscreen wiper arm
- With adjustment dial for manual operation
- With narrow socket for tight spaces
- Special steel



	A mm	B mm	mm	mm	g
700.1193	16	28	11	M8 x 45	140

**Universal windscreen wiper arm puller with pulling yoke**

- Tough design
- With pulling yoke
- Ideally suited to the protective removal of windscreen wiper arms
- Pulling spindle with brass cap for damage-free support on the washer arm shaft
- Extremely robust spindle with inductively hardened thread
- Spindle guidance is carried out in a moving sleeve
- Prevents damage to the bodywork and the windscreen wiper arm
- With narrow socket for tight spaces
- Special steel



	A mm	B mm	mm	mm	g
700.1191	26	28	13	M8 x 75	450

**Universal windscreen wiper arm puller with pulling yoke**

- With pulling yoke
- Ideally suited to the protective removal of windscreen wiper arms
- Pulling spindle with brass cap for damage-free support on the washer arm shaft
- Extremely robust spindle with inductively hardened thread
- Spindle guidance is carried out in a moving sleeve
- Prevents damage to the bodywork and the windscreen wiper arm
- With narrow socket for tight spaces
- Special steel



	A mm	B mm	mm	mm	g
700.1192	16	41	17	M10 x 80	510

**BMW windscreen wiper arm puller with adjustable jaw**

- With adjustable pulling yoke with spring mechanism
- Ideally suited to the protective removal of windscreen wiper arms
- Pulling spindle with brass cap for damage-free support on the washer arm shaft
- Extremely robust spindle with inductively hardened thread
- Spindle guidance is carried out in a moving sleeve
- Prevents damage to the bodywork and the windscreen wiper arm
- With narrow socket for tight spaces
- Special steel



**Application range:** BMW 3, 5, 6, 7 and 8 series, Z4, Z8 Roadster, X5 and Rolls Royce Phantom



	A mm	B mm	mm	mm	g
700.1178	16-38	42	17	M10 x 85	500

**Universal windscreen wiper arm puller with fork**

- With pulling yoke
- Ideally suited to the protective removal of windscreen wiper arms
- Pulling spindle with brass cap for damage-free support on the washer arm shaft
- Extremely robust spindle with inductively hardened thread
- Spindle guidance is carried out in a moving sleeve
- Prevents damage to the bodywork and the windscreen wiper arm
- With narrow socket for tight spaces
- Special steel



	A mm	B mm	mm	g
700.1198	23,5	48	8	240

**Audi Q7 windscreen wiper arm puller with fork**

- With pulling yoke
- Ideally suited to the protective removal of windscreen wiper arms
- Pulling spindle for damage-free support to the rear wiper blades
- Extremely robust spindle with inductively hardened thread
- Prevents damage to the bodywork and the windscreen wiper arm
- With narrow and flat socket for tight spaces
- Special steel

**Application range:** Audi Q7



	A mm	B mm	mm	g
700.1194	26,5	16	16	173

**Universal windscreen wiper arm puller set 2/4-jaws**

- 2/4-jaws
- each with 2 extra-slim size and pairs of arms with varying width
- Ideally suited to removal of windscreen wiper arms
- Pulling spindle for damage-free support to the rear wiper blades
- Option of working with wide or narrow arms
- Ball bearing mounted centring point
- With narrow socket for tight spaces
- Extremely robust spindle with inductively hardened thread
- Prevents damage to the bodywork and the windscreen wiper arm
- External drive hexagonal socket 13.0 mm
- Special steel



		g
700.1242	6 pcs Universal windscreen wiper arm puller set 2/4-jaws	690

consists of:

		g
700.1246	Traverse arm	100
700.1245	Spindle M12 x 90 mm	150
700.1247	Pair of legs – slim type	100
700.1248	Pair of legs – wide type	100

### Windscreen wiper arm puller set

- Ideally suited to disassembly of windscreen wiper arms
- Suited to a multitude of vehicle types and car brands
- Self-stiffening or recessed built-in washer arms are quickly disassembled with this set
- Prevents damage to the bodywork and the windscreen wiper arm
- Spindle guidance is carried out in a moving sleeve
- Special steel
- In durable plastic storage case



Part No.	Quantity	Description	Weight (kg)
700.1155	6 pcs	Windscreen wiper arm puller set	2.86

consists of:

Part No.	Description	Weight (kg)
700.1194	Audi Q7 wiper arm puller with fork	173
700.1189	VAG, Ford and Mercedes windscreen wiper arm puller 2-jaw	243
700.1191	Windscreen wiper puller, type 2, 13mm	450
700.1192	Windscreen wiper puller, type 3, 17mm	510
700.1198	Universal wiper arm puller with fork	240
700.1179	Universal wiper arm 2-jaw puller with t-bar	284



### Universal windscreen wiper arm puller set

- Ideally suited to disassembly of windscreen wiper arms
- Includes impact hammer puller
- Universally fitting puller set suitable for approx. 450 windscreen wipers, 300 vehicles and 30 car brands
- Self-stiffening or recessed built-in washer arms are quickly disassembled with this set
- Washers with washer nozzle in the centre of the wiper arm can be worked on either with the impact hammer or with the hollow spindle attachment
- Option of working with mechanical or impact spindle
- Prevents damage to the bodywork and the windscreen wiper arm
- Special steel
- In durable plastic storage case

**Application range:** Audi, BMW, Citroën, Ford, Mercedes, Opel, Peugeot, Renault, Volkswagen



Part No.	Quantity	Description	Weight (kg)
700.1240	13 pcs	Universal windscreen wiper arm puller set	3.81

consists of:

Part No.	Description	Weight (kg)
700.1232	Spindle, L=95mm, M12	170
700.1233	Fork size #1	110
700.1234	Fork size #2	140
700.1235	Fork size #3	150
700.1236	Fork size #4	110
700.1237	Fork size #5	150
700.1238	Fork size #6	100
700.1239	Fork size #7	100
700.1241	Fork size #8	170
700.1242	Wiper puller	690
700.1243	Spindel extension 30mm, f.700.1232/42	20
700.1244	Hollow spindle adaptor, f.700.1232/42	20

### WASHER NOZZLE TOOL AND MAGNET LIFTER

#### Washer nozzle cleaning and adjusting tool

- Practical service tool
- With sturdy, scriber-like centre
- With narrow cleaning rod
- Ideally suited to the cleaning and adjustment of windscreen washer nozzles
- Also suited to the adjustment of headlight washer nozzles
- With mounting clip for breast pocket
- Includes protective covers
- Aluminium



Part No.	Length (mm)	Weight (g)
550.1022	95.0	40

### Washer nozzle adjustment tool with telescopic magnet

- Practical service tool
- Load capacity up to 0.5 kg
- With sturdy, scriber-like centre
- Removable telescopic magnet function with extra-narrow magnet
- Ideally suited to the adjustment of windscreen washer nozzles
- Also suited to the adjustment of headlight washer nozzles
- Extended telescopic rod shows the direction of the nozzle jets on the glass
- With mounting clip for breast pocket
- Includes protective cover
- Aluminium



Part No.	Head Ø (mm)	Length (mm)	Weight (g)
550.1001	8.0	150,0 - 675,0	60

### Washer nozzle adjustment tool with telescopic magnet with flexible magnet head

- Practical service tool
- Load capacity up to 2.5 kg
- With sturdy, scriber-like centre
- Removable telescopic magnet function with flexible magnet head
- Ideally suited to the adjustment of windscreen washer nozzles
- Also suited to the adjustment of headlight washer nozzles
- Extended telescopic rod shows the direction of the nozzle jets on the glass
- With mounting clip for breast pocket
- Includes protective cover
- Aluminium



Part No.	Head Ø (mm)	Length (mm)	Weight (g)
550.1023	11.0	150,0 - 590,0	60

### Windscreen nozzle adjusting tool for Opel

- For damage-free adjustment of flat nozzles on rear windcreens and windscreen wiper systems
- Accurate profile for the interchanging of nozzle heads
- Universal usage
- With PVC dipped handle
- Special steel

**Application range:** Opel Astra, Insignia, etc.



Part No.	Length (mm)	Weight (g)
140.2359	145.0	63



**Telescopic magnetic lifter**

- Magnet power raised 35% due to energy safety cap
- Stainless steel



	Head Ø mm	L mm	g
550.1004	13.0	178,0-675,0	70

**Telescopic magnetic lifter**

- Load capacity to 1.5 kg
- Extendable telescopic function
- Clip for the breast pocket
- Magnet power raised 35% due to energy safety cap
- Stainless steel



	Head Ø mm	L mm	g
550.1002	18.0	178,0-675,0	80

**Telescopic magnetic lifter**

- Load capacity to 2 kg
- With an extendable telescopic function
- Clip for the breast pocket
- Special steel



	Head Ø mm	L mm	g
550.1000	13.0	130,0-630,0	30

**Telescopic magnetic lifter**

- Load capacity to 5 kg
- With rotary head
- With an extendable telescopic function
- Clip for the breast pocket
- Magnet power raised 35% due to energy safety cap
- Stainless steel



	Head Ø mm	L mm	g
550.1003	18.0	130,0-675,0	90

**Flexible magnetic holder**

- 200 g capacity
- Flexible shaft
- 4 mm with a very thin magnetic seat
- One component handle



	L mm	g
550.1032	400.0	20

**Flexible magnet lifter**

- Load capacity to 2 kg
- Detachable inner cover
- Magnet power raised 35% due to energy safety cap
- Special steel



	Head Ø mm	L mm	g
550.1010	10.0	585.0	130

**Flexible magnet lifter**

- Load capacity to 1 kg
- Flexible shaft
- Two component handle
- Special steel



	Head Ø mm	L mm	g
550.1025	15.0	510.0	30

**Flexible magnet lifter**

- Load capacity to 2 kg
- Flexible shaft
- Two component handle
- Special steel



	Head Ø mm	L mm	g
550.1026	17.0	510.0	30



**Flexible magnet lifter**

- Load capacity to 3 kg
- Flexible shaft
- Two component handle
- Special steel



	Head Ø mm	L mm	g
550.1027	19.0	510.0	30



**Flexible pick up tool**

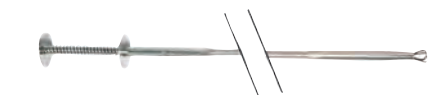
- Flexible
- Circular diameter max. 20.0 mm
- Stainless steel



	Ø mm	L mm	g
550.1301	20	600.0	150

**Magnet lifting and claw type gripper set**

- Ideally suited for picking up screws and small parts
- Load capacity to 200 g
- Flexible shaft
- 4 mm with a very thin magnetic seat
- Pick-up tool with max. diameter of 20.0 mm
- Magnet holder with one component handle
- Stainless steel pick-up tool



		g
550.1050	2 pcs Magnet lifting and claw type gripper set	182

consists of:

		g
550.1301	Flexible claw pickup tool, 600mm	150
550.1032	Flexible magnet, 400mm	20

## DASHBOARD PANEL

### Professional dashboard protective panel with straight edges, 270 x 200 mm

- Ideal for protecting the dashboard, interior trim and roof lining from damage when removing windscreen
- Protective panel with straight front edges
- Ensures clean and professional work
- For different areas
- Incorporated handle for exact placement and secure grip
- High-strength plastic



	L mm	B mm	g
140.2323	270.0	200.0	230

### Professional dashboard protective panel with slightly angled edges, 270 x 200 mm

- Ideal for protecting the dashboard, interior trim and roof lining from damage when removing windscreen
- Protective panel with slightly angled front edge
- Ensures clean and professional work
- For different areas
- Incorporated handle for exact placement and secure grip
- High-strength plastic



	L mm	B mm	g
140.2324	270.0	200.0	230

### Professional dashboard protective panel with straight edges, 450 x 300 mm

- Ideal for protecting the dashboard, interior trim and roof lining from damage when removing windscreen
- Protective panel with straight front edges
- Ensures clean and professional work
- For different areas
- Incorporated handle for exact placement and secure grip
- High-strength plastic



	L mm	B mm	g
140.2321	450.0	300.0	450

### Professional dashboard protective panel with slightly angled edges, 450 x 300 mm

- Ideal for protecting the dashboard, interior trim and roof lining from damage when removing windscreen
- Protective panel with slightly angled front edge
- Ensures clean and professional work
- For different areas
- Incorporated handle for exact placement and secure grip
- High-strength plastic



	L mm	B mm	g
140.2322	450	300.0	450

### Professional dashboard protective panel set

- Ideal for protecting the dashboard, interior trim and roof lining from damage when removing windscreen
- Each with two protective panels with straight and slightly angled front edges
- Ensures clean and professional work
- For different areas
- Incorporated handle for exact placement and secure grip
- High-strength plastic



		g
140.2320	4 pcs Professional dashboard protective panel set	1.36

consists of:

		g
140.2321	Professional protection board straight 450 x 300 mm	450
140.2322	Professional protection board angled 450 x 300 mm	450
140.2323	Professional protection board straight 270 x 200 mm	230
140.2324	Professional protection board angled 270 x 200 mm	230



## INTERIOR AND WING MIRROR

### ERGOTORQUE<sup>plus</sup> screwdriver for TX screws, tamperproof

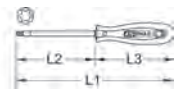
- Two component handle
- Optimal power transmission
- With hanging hole
- Hardened blade
- Chrome finish with burnished tips
- Blade made of chrome vanadium



		L1 mm	L2 mm	L3 mm	g
159.1054	TB20	205.0	100.0	105.0	50

### ERGOTORQUE<sup>®</sup> screwdriver for TX screws, long

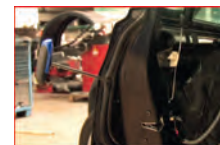
- One component handle
- Optimal power transmission
- With hanging hole
- Hardened blade
- Chrome finish with burnished tips
- Blade made of chrome vanadium



		L1 mm	L2 mm	L3 mm	g
911.1670	T15	330.0	250.0	80.0	60
911.1671	T20	343.0	250.0	93.0	60
911.1672	T25	345.0	250.0	95.0	70
911.1673	T30	360.0	250.0	110.0	70

### ERGOTORQUE<sup>plus</sup> T-handle TX key wrench, long

- Extra long execution
- With two component handle
- Continuous hardened
- Tip burnished
- Chrome plated and mirror polished
- Special steel

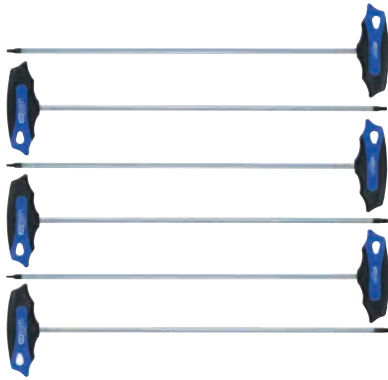


		L1 mm	L2 mm	L3 mm	g
158.8051	T10	403.0	373.0	80.0	30
158.8052	T15	403.0	373.0	80.0	30
158.8053	T20	403.0	373.0	100.0	40
158.8054	T25	408.0	373.0	100.0	40
158.8055	T27	408.0	373.0	100.0	40
158.8056	T30	408.0	373.0	100.0	45



**ERGOTORQUEplus® T-handle TX key wrench set**

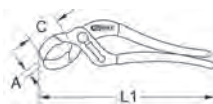
- Extra long execution
- With two component handle
- Continuous hardened
- Tip burnished
- Chrome plated and mirror polished
- Special steel



158.8050	6 pcs	T10 - T15 - T20 - T25 - T27 - T30	375
----------	-------	-----------------------------------	-----

**Interior mirror pliers**

- Ideally suited to a clean and damage-free removal of the interior mirror
- With 4 joints
- Isolated mouth for non-destructive working
- For mirror bases up to Ø 65 mm
- With PVC dipped handle
- Interchangeable protective jaw
- Chrome plated and mirror polished
- Chrome vanadium



	A mm	C mm	L mm	Replacement jaws	Weight
116.1200	20,0 - 65,0	45,0	225,0	116.1201	320

**Double ended mirror screwdriver**

- Clip for the breast pocket
- Knurled grip
- Aluminium

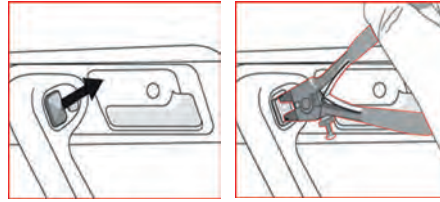


	D	L mm	Weight
140.2216	T15 x PH0	120,0	50
140.2217	2,0 mm x 3/32"	120,0	50
140.2218	T15 x T20	120,0	50

**Wing mirror pliers**

- Perfectly suited to assembly and disassembly of wing mirrors
- With opening limits
- With adjusting screw and spring
- With PVC dipped handle
- Special tool steel

**Application range:** Wing mirrors for BMW E12, E21, E24, E28, E30, E31, E32, E34, E36, E38 and E39



	Length mm	Weight
115.1305	165,0	180

**One handed mini suction cup**

- Practical one-handed operation by lever
- For lifting, carrying and holding
- Quick, easy and correct work on small objects
- Well-suited to adjusting and inserting mirror glass
- Load capacity up to 8 kg
- With release button
- Special plastic



	Suction cup Ø mm	H mm	L mm	Weight
140.1015	70,0	92,0	115,0	168

**SENSORS**

**Rain and light sensor release tool**

- Ideally suited to quick and easy removal of the SOR-199 sensor optic on the windscreen
- A damage-free disassembly is ensured with this tool by completely surrounding the sensor
- Once the sensor has been surrounded it is simply pulled out to the side
- By warming the windscreen from the outside, the adhesive for the sensor is easier to remove
- With rounded internal edges with four nuts
- With plastic handle
- Special steel

**Application range:** Alfa Romeo, BMW, Mercedes, Rover, etc..



	L mm	B mm	Weight
140.2366	200,0	80,0	130

**Rain and light sensor release tool**

- Ideally suited to quick and easy removal of the SOR-193x sensor optic (all versions) on the windscreen
- A damage-free disassembly is ensured with this tool by completely surrounding the sensor
- Once the sensor has been surrounded it is simply pulled out to the side
- By warming the windscreen from the outside, the adhesive for the sensor is easier to remove
- With cornered inner edges
- With plastic handle
- Special steel

**Application range:** All BMW models from 09/2001 onwards



	L mm	B mm	Weight
140.2367	200,0	83,0	135

### Rain and light sensor release tool

- Ideally suited to quick and easy removal of the SOR-197x sensor optic (all versions) on the windscreen
- A damage-free disassembly is ensured with this tool by completely surrounding the sensor
- Once the sensor has been surrounded it is simply pulled out to the side
- By warming the windscreen from the outside, the adhesive for the sensor is easier to remove
- With rounded inner edges
- With plastic handle
- Special steel

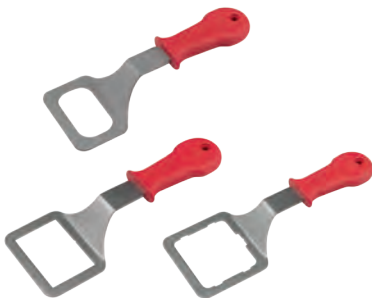
**Application range:** Mercedes E class, CLK from 2002 onwards, C class from 2003 onwards and S class from 2003 onwards



	L mm	B mm	g
140.2368	230,0	83,0	145

### Windscreen rain or light sensor removal tool set

- Ideally suited to quick and easy removal of the SOL-193x sensor optic, SOL-197x (all versions) and SOR-199 on the windscreen
- A damage-free disassembly is ensured with this tool by completely surrounding the sensor
- Once the sensor has been surrounded it is simply pulled out to the side
- By warming the windscreen from the outside, the adhesive for the sensor is easier to remove
- With plastic handle
- Special steel



		g
140.2365	3 pcs Windscreen rain or light sensor removal tool set	410

consists of:

		g
140.2366	Release tool with rounded inner edges	130
140.2367	Release tool with cornered inner edges	135
140.2368	Release tool with rounded inner edges and nuts	145

### PLASTIC WEDGES

#### Standard clip remover

- With wedge shaped end
- With lifting and wedge function
- Ideal for loosening panels without damage to the paintwork
- Special plastic



	L mm	B mm	g
911.8125	210.0	20.0	80

#### Trim removal wedge

- With wedge shaped end
- Narrow execution
- With 2 different levering angles
- Angled sides have a 90° and 30° angle
- Ideal for loosening panels without damage to the paintwork
- Special plastic



	L mm	B mm	g
911.8122	180.0	20.0	40

#### Double clip remover

- With wedge shaped end
- Very robust execution
- With 2 different lever angles at 75° and 30°
- Special plastic



	L mm	B mm	g
911.8123	200.0	30.0	70

#### Bumper trim removal wedge

- With wedge shaped end
- Wide execution
- With 90° angled side
- Ideal for loosening panels without damage to the paintwork
- Special plastic



	L mm	B mm	g
911.8121	160.0	60.0	80

#### Clip remover with pulling eye

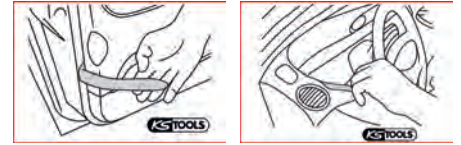
- With wedge shaped end
- Pulling eye for removal
- With 90° angled side
- Ideal for loosening panels without damage to the paintwork
- Special plastic



	L mm	B mm	g
911.8124	180.0	30.0	70

### Plastic lever wedge set

- Ideal for loosening miscellaneous cover parts
- Practical assortment of different wedge and clip removal tools
- Slim and robust design
- Ideal for avoiding paint damage and damage-free release of interior trims, panels, etc.
- For delicate work on fragile cover parts
- Special plastic



		g
911.8120	5 pcs Plastic lever wedge set	300

consists of:

		g
911.8121	Bumper trim removal wedge, 160 mm	80
911.8122	Trim removal wedge, 180 mm	40
911.8123	Double clip wedge, 200 mm	70
911.8124	Clip lever, with wedge shaped end, 180 mm	70
911.8125	Standard clip wedge, with wedge shaped end, 210 mm	80

#### Dual clip remover, offset

- Flat shaped back
- Durable design
- With straight- and sharp chisel end
- Ideal for loosening panels without damage to the paintwork
- With hanging hole
- Special plastic



	L mm	B mm	g
911.8106	200.0	30.0	40

#### Dual clip remover, straight profiled

- Flat shaped back
- Durable design due to straight profile
- Blunt chisel end
- Ideal for loosening panels without damage to the paintwork
- With hanging hole
- Special plastic



	L mm	B mm	g
911.8107	200.0	30.0	40



**Double ended clip lever narrow**

- Flat shaped back
- Narrow execution
- Wedge end tips pointed and chisel formed
- Ideal for loosening panels without damage to the paintwork
- With hanging hole
- Special plastic



	L mm	B mm	
911.8110	200.0	15.0	20

**Double ended pointed and rounded head lever**

- Flat shaped back
- Flattened and flexible radius side
- Blunt chisel side
- Ideal for loosening clips
- With hanging hole
- Special plastic



	L mm	B mm	
911.8108	200.0	25.0	20

**Double ended sword and rounded head lever**

- Flat oval on the front and back side
- Both ends chisel edged formed
- Flexible
- Ideal for loosening clips
- With hanging hole
- Special plastic



	L mm	B mm	
911.8109	200.0	20.0	20

**Adhesive weight remover with saw blade**

- Ideal for protective disassembly of adhesive wheel weights on aluminium rims
- With flexible flat scraper and cutting edge
- Lever back flat side chisel form, cutting side with teeth
- Special lever for the removal of wheel weights
- Also suitable for the removal of labels, adhesive and type plates
- Surfaces are not damaged
- Sharpened with a file
- Solvent-resistant
- Special plastic



	L mm	B mm	Radius dimensions in mm	
911.8111	200.0	25.0	38.0	20



**Interior panelling removal tool set**

- Ideal for loosening miscellaneous cover parts
- Practical assortment of different wedge and clip removal tools
- Slim and robust design
- Ideal for avoiding paint damage and damage-free release of interior trims, panels, etc.
- For delicate work on fragile cover parts
- Special plastic



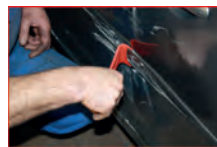
911.8105	6 pcs Interior panelling removal tool set	280

consists of:

911.8106	Double ended-clip remover, offset	40
911.8107	Dual-clip remover, straight profiled, 200 mm	40
911.8108	Double ended pointed and rounded head lever	20
911.8109	Double ended sword and rounded head lever, 200 mm	20
911.8110	Double ended-wedge lever, slim	20
911.8111	Adhesive weight removal lever and cutting edge Length 200 mm, width 25 mm	20

**Plastic lever wedge set**

- Ideal for loosening miscellaneous cover parts
- Practical assortment of different wedge and clip removal tools
- Slim and robust design
- Ideal for avoiding paint damage and damage-free release of interior trims, panels, etc.
- For delicate work on fragile cover parts
- Special plastic
- In a practical storage case



911.8205	11 pcs Plastic lever wedge set	530

consists of:

911.8106	Double ended-clip remover, offset	40
911.8107	Dual-clip remover, straight profiled, 200 mm	40
911.8108	Double ended pointed and rounded head lever	20

consists of:

911.8109	Double ended sword and rounded head lever, 200 mm	20
911.8110	Double ended-wedge lever, slim	20
911.8111	Adhesive weight removal lever and cutting edge Length 200 mm, width 25 mm	20
911.8121	Bumper trim removal wedge, 160 mm	80
911.8122	Trim removal wedge, narrow version, with wedge shaped end, 180 mm	40
911.8123	Double clip wedge, with wedge shaped end, 200 mm	70
911.8124	Clip lever, with wedge shaped end, 180 mm	70
911.8125	Standard clip wedge, with wedge shaped end, 210 mm	80

**Plastic wedge and glass scraper set**

- Ideal for loosening miscellaneous cover parts
- Practical range of different wedge and glass scrapers
- Slim and robust design
- Ideal for avoiding paint damage and damage-free release of interior trims, panels, etc.
- For delicate work on fragile cover parts
- Special plastic



911.8210	4 pcs Plastic wedge and glass scraper set	120

consists of:

911.8211	Glass scraper, straight, 175 mm	20
911.8212	Glass scraper, angled, 175 mm	30
911.8213	Wedge, cornered, 175 mm	30
911.8214	Wedge, curved tip, 175 mm	30

**Moulding wedge with felt**

- With felt trimming
- For the careful assembly by pressing in trim mouldings
- The flat surface protects components
- Suitable for the aligning of car doors or to force them open
- Special plastic



	L mm	B mm	
911.8141	250.0	20.0	70

**Plastic lever and beveled wedge**

- The flat surface protects components
- Ideally suited for working on trims, door panels, rubber seals etc.
- Special plastic



	L mm	B mm	
911.8142	250.0	20.0	30

### Trim plastic wedge

- Ideal for the aligning of car doors or to force them open
- The flat surface protects components
- Suitable for working on trims, door panels, rubber seals etc.
- Special plastic



	L mm	B mm	Weight
911.8138	195.0	30.0	90
911.8139	195.0	60.0	150

### Trim removal combination wedge

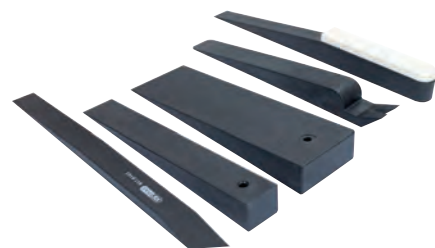
- Ideally suitable for the dismantling and assembly of trims
- Door mouldings, door accessories etc
- Swallow tail opening 45° angled
- The flat surface protects components
- Optimal leverage with the short wedge and long lever
- Optimal usage for removal and refitting trims and mouldings cutting edges on the ends
- Special plastic



	L mm	B mm	Weight
911.8140	210.0	26.0	90

### Plastic lever wedge set

- Ideal for the aligning of car doors or to force them open
- The flat surface protects components
- Suitable for working on trims, door panels, rubber seals etc.
- Impact resistant special plastic



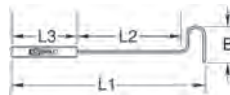
	Weight
911.8160 5 pcs Plastic lever wedge set	430

consists of:

		Weight
911.8138	Trim plastic wedge, L=195mm x B=30mm	90
911.8139	Trim plastic wedge, L=195mm x B=60mm	150
911.8140	Trim plastic wedge, L=210mm x B=26mm	90
911.8141	Moulding wedge with felt, L=250mm x B=20mm	70
911.8142	Plastic lever and beveled wedge, L=250mm x B=20mm	30

### Removal wedge

- Ideally suited for the dismantling of sensitive components
- The flat surface protects damaging laquer
- Ideal for hard to access areas
- Special plastic



	L1 mm	L2 mm	L3 mm	B mm	Weight
911.8119	600.0	340.0	200.0	30.0	340



### TRANSPORT AND STORAGE

### Windscreen table with rubber protective pads

- Ideally suited for holding the windscreen when removing, or removing adhesive material
- Four moveable rubber nipples hold the windscreen in place and prevent scratches
- Fully adjustable in width
- For nearly all windscreen sizes
- Foldable to save space during storage
- Robust construction
- Up to 60 kg capacity
- From blue painted steel pipe



	L mm	H mm	Suction cup Ø mm	Rubber pad	Weight
140.2225	1160.0	1070.0	140.0	140.2225-1	10.35

### Windscreen worktable with castors

- Ideally suited for holding the windscreen when removing, or removing adhesive material
- Holding tube with non-slip, coated padding offer optimal grip and prevent scratches
- For nearly all windscreen sizes
- Foldable to save space during storage
- With 4 stable castors, 2 with locking brakes
- Simple handling
- Load capacity up to 100 kg
- Robust construction from steel pipe



	L mm	H mm	Pad	Weight
140.2227	900.0	930.0	140.2228	8.00

### Windscreen holder

- Ideally suited for holding the windscreen when removing, or removing adhesive material
- Holding tube with non-slip, coated padding offer optimal grip and prevent scratches
- Fully adjustable in width
- For nearly all windscreen sizes
- Foldable to save space during storage
- Robust construction
- Up to 80 kg capacity
- From red powder-coated steel pipe



	L mm	H mm	Pad	Weight
140.2226	790.0	1060.0	140.2226-1	7.70



**Universal Telescopic-Multi-purpose trolley**

- Ideally suited to bodywork restoration, in the painting area or for filling screens when removing, or applying adhesive material, etc.
- Holding tube with non-slip, coated padding offer optimal grip and prevent scratches
- The multi-talented universal use, since width and height are fully adjustable and lockable
- For nearly all windscreen sizes
- Can also be used as a work bench or for carrying parts
- Collapsible to save space during storage
- With 4 stable castors, 2 with locking brakes
- Simple handling
- Load capacity up to 100 kg
- Robust construction from square pipe



	B mm	H mm	kg
500.8100	257,0-1380,0	845,0-1320,0	23.50

**PLATFORM**

**Aluminium work platform**

- With skid-proof profile on the running stage
- With chequer plate profile on the steps
- No tipping over through obliquely placed standing feet
- Double-sided access
- With large platform for safe standing
- With safety clips for added security
- Beams and steps made from aluminium
- Collapsible and therefore space saving when storing
- Rounded plastic feet protect the floor and the running stage
- Secure stand makes working easier
- Can be used to assemble screens, engine bay work, work on the roof, commercial vehicle pit work, etc.
- Universally usable for high vehicles such as camper vans, small transporters, wagons, buses and off-road vehicles
- Heavy aluminium construction



**Technical data:**  
 Platform dimensions: 1000 x 300 mm  
 Height: 480.0 mm  
 Total load capacity: 150 kg

	L mm	B mm	kg
800.0960	1345.0	405.0	7.40

**Safety assembly step**

- No tipping over through obliquely placed standing feet
- Anti slip, hot dip galvanised, with the frame riveted lattice rustproof
- Step to DIN 50976
- Massive and distortion stiff steel tube construction
- Base frame plastic coated
- The gripped plastic feet protect the surface and add stability
- Applicable e.g. panel assembly, engine compartment works, roof works truck pit working
- Universal suitable in very high vehicles e.g. motor homes, small vehicles, truck and buses, terrain vehicles



**Technical data:**  
 Height 2nd step: 450.0 mm  
 Surface area: 690 x 620  
 Steel grating: 590 x 290  
 Total load capacity: 300 kg

		kg
450.0960	Safety assembly step	14.00

**REMOVAL TOOL - NON GLUED CAR WINDSCREENS**

**Windscreen trim remover**

- Ideally suited to levering off trims on windcreens or other similar trims
- With flat, blade-like lever head
- With the special lever shape there is high leverage force, which easily loosen the parts to be removed
- Also suitable for the removal of screens mounted with solid rubber
- PVC dipped handle
- Chrome vanadium



	L mm	kg
140.2285	240.0	140

**Mould release tool set**

- With rubber underside to prevent damage from scratches
- For removing the clips on bonded car screens
- Ideally suited to removing double clips, which are barbed on both sides
- Can be used for all clip types that must be tightened with the windscreen
- Overall length 220.0 mm
- With suspension hole
- PVC dipped handle



		kg
140.2202	2 pcs Mould release tool set	280

consists of:

		kg
140.2351	Trim and air ventilation remover right handed	140
140.2352	Trim and air ventilation remover left handed	140

**Glass hook with ball end, extra long**

- Extra long execution
- For the dismantling and assembly of rubber sealings and trim strips
- For protective lifting or cleaning of sealings
- With hanging hole
- With one component handle



	L mm	kg
140.2229	295.0	160

**Glass hook with long shaft**

- Pointed execution
- For rubber bonded vehicle windcreens
- Hanging hole
- One component handle



	L mm	kg
140.2233	270.0	120

**Ball head with short shaft**

- For rubber bonded vehicle windcreens
- Hanging hole
- One component handle



	L mm	kg
140.2235	210.0	120

**Glass hook with short shaft**

- Pointed execution
- For rubber bonded vehicle windcreens
- Hanging hole
- One component handle



	L mm	kg
140.2234	200.0	110

**Locking strip insertion tool**

- For non bonded vehicle windcreens
- With 6 interchangeable yoke heads
- Quick insertion of the different rubber profiles is possible
- With hanging hole
- With one component handle



	L mm	Yoke heads	kg
140.2236	160.0	140.2236-1	220

### Locking tool

- 6 m nylon cord
- For the professional dismantling of vehicle rubbered non bonded windscreens
- Hanging hole
- One component handle



	L mm	
140.2237	170.0	120

### Windscreen installation set

- For problem-free assembly of front windscreens with traditional rubber seals and for inserting trim
- Universal usage
- Includes inserter with 6 yoke heads for various seal profiles
- Contains different tools for cleaning the internal seal profile
- Tool with hanging hole
- With one component handle

**Application range:** passenger cars, transporters, commercial vehicles, buses and classic cars



140.2240 5 pcs Windscreen installation set	890

consists of:

140.2233 Glass hook, for rubber windscreen inserts 270 mm	120
140.2234 Glass hook, for rubber windscreen inserts 200 mm	110
140.2235 Glass hook, for rubber windscreen inserts 210 mm	120
140.2236 Tapered tool for strip insertion, 160 mm	220
140.2237 Locking tool with 6 m pull nylon cord, 170 mm	120

### Screen rubber assembly tool

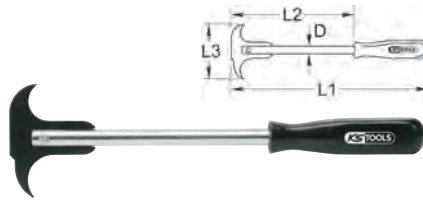
- Ideally suited to the introducing beading in the conventional windscreen sealant
- Not suitable for adhered screens
- Includes 2 eyelets for different bead sizes
- With one component handle
- Special steel



	Length mm	
140.2253	210.0	155

### Gasket ring dismantling tool

- Burnished
- Chrome vanadium



	L1 mm	L2 mm	L3 mm	D mm	
550.1060	300.0	195.0	85.0	12.0	380

### Hook tool set

- Ideal for removing and use of O rings and seals
- With one component handle
- With hanging hole
- Special steel



550.1045 4 pcs Hook tool set	120

consists of:

550.1046 Hook tool 120mm blade, straight version	27
550.1047 Hook tool 120mm blade, 45° angled version	27
550.1048 Hook tool 120mm blade, 90° angled version	27
550.1049 Hook tool 120mm blade, 135° angled version	27

### Master hook tool set

- Ideal for removing and use of O rings and seals
- With hanging hole
- Special steel



550.1070 9 pcs Master hook tool set	680

consists of:

550.1046 Hook tool 120mm blade, straight version	27
550.1047 Hook tool 120mm blade, 45° angled version	27
550.1048 Hook tool 120mm blade, 90° angled version	27
550.1049 Hook tool 120mm blade, 135° angled version	27
550.1071 Hook tool large, straight	91
550.1072 Hook tool large, 90° offset	105
550.1073 Hook tool large, sickle form	88
550.1074 T-handle hook tool, S-form small	42
550.1075 T-handle hook tool, S-form big	96

### PANEL BAG

#### Panel bag

- Universal usage for positioning, fixing and separating body parts
- Ideal for the damage-free opening of car doors
- Levelling tool for the installation of door and window frames
- Extremely high pressure power
- Easy to pump with the hand pump
- Robust panel bag



	L mm	B mm	
116.1035	200.0	150.0	190

#### Panel bag set with hand pump

- Universal usage for positioning, fixing and separating body parts
- Ideal for the damage-free opening of vehicle doors
- Levelling tool for the installation of door and window frames
- For separating interior trim
- Pumping via a hand pump with valve connector
- Release valve on the bellows
- Extremely high pressure power



150.1685 4 pcs Panel bag set with hand pump	300

consists of:

150.1686 Hand bellows	84
150.1687 Panel bag 180 x 40mm	23
150.1688 Panel bag 190 x 60mm	27
150.1689 Panel bag 160 x 160mm	47



**REMOVAL TOOL - GLUED CAR WINDSCREENS**

**Long knife for trim seals**

- For the use with conventional trapezoid blades and hook blades
- Includes a replacement blade in the handle
- Non slip handle
- Aluminium



	L mm		
140.2284	230.0	907.2206	300
140.2290	470.0	907.2206	320
140.2291	620.0	907.2206	380

**Pull knife**

- With flexible pull handle
- Ideal for the removal of adhered vehicle screens
- Also suitable for hard-to-reach places or corners
- Includes 25 mm blade
- Practical one-man operation
- Aluminium



	L mm	Replacement handle	
140.2241	130.0	140.2247	240

**Pull knife**

- PVC dipped stop and pull handle
- With flexible pull handle
- Ideal for the removal of adhered vehicle screens
- Also suitable for hard-to-reach places or corners
- Includes 25 mm blade
- Practical one-man operation
- Also suitable for use as a scraper
- Aluminium



	L mm	Replacement handle	
140.2244	130.0	140.2246	310

**Pull knife with quick change system**

- PVC dipped stop and pull handle
- With flexible pull handle
- Ideal for the removal of adhered vehicle screens
- Also suitable for hard-to-reach places or corners
- Includes 25 mm blade
- Quick blade changing system with a push button
- Practical one-man operation
- Also suitable for use as a scraper
- Aluminium



	L mm	Replacement handle	
140.2248	130.0	140.2246	350

**Pull knife set with quick change system**

- PVC dipped stop and pull handle
- With flexible pull handle
- Ideal for the removal of adhered vehicle screens
- Also suitable for hard-to-reach places or corners
- Quick blade changing system with a push button
- Practical one-man operation
- Also suitable for use as a scraper
- Insert made from high quality foam
- Aluminium



140.2239	10 pcs Pull knife set with quick change system	1.55

consists of:

140.2248	Pull knife, quick change system, 130mm	350
140.2356	Stainless steel pull blade set, blade length 25 mm, 3 part.	45
140.2357	Stainless steel pull blade set, blade length 38 mm, 3 part.	50
140.2358	Seam scraper blade set, blade length 19 mm, 3 part	115

**Stainless steel pull knife blade**

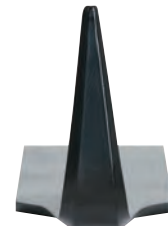
- Blade length 38 mm
- Blade tip tapered
- Extra slim execution
- Stainless steel



	Content	
140.2271	1	20
140.2272	6	120

**Pull knife blade**

- Blade length 19 mm
- Blade tip tapered
- Slim execution
- Special steel



	Content	
140.2273	1	20
140.2274	6	120

**Stainless steel standard pull knife blade**

- Blade length 25 mm
- Blade in sword form
- Attachment length 13 mm
- Not for quick change system
- Stainless steel



	Content	
140.2296	1	20
140.2297	6	120

**Stainless steel standard pull knife blade**

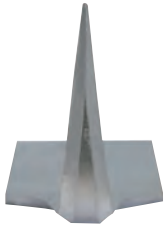
- Blade length 30 mm
- Blade in sword form
- Attachment length 13 mm
- Not for quick change system
- Stainless steel



	Content	
140.2298	1	20
140.2299	6	120

### Stainless steel pull knife blade

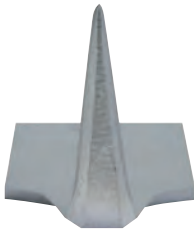
- Blade length 25 mm
- Blade tip tapered
- Extra slim execution
- Stainless steel



Content		
140.2269	1	20
140.2270	6	120

### Stainless steel pull knife blade

- Blade length 19 mm
- Blade tip tapered
- Extra slim execution
- Stainless steel



Content		
140.2267	1	20
140.2268	6	120

### Pull knife blade

- Blade length 25 mm
- Blade tip tapered
- Slim execution
- Special steel



Content		
140.2275	1	20
140.2276	6	120

### Pull knife blade

- Blade length 38 mm
- Blade tip tapered
- Slim execution
- Special steel



Content		
140.2277	1	20
140.2278	6	100

### Standard pull knife blade

- Blade length 25 mm
- Blade in sword form
- Attachment length 13 mm
- Not for quick change system
- Special steel



Content		
140.2292	1	20
140.2293	6	120

### Standard pull knife blade

- Blade length 32 mm
- Blade in sword form
- Attachment length 13 mm
- Not for quick change system
- Special steel



Content		
140.2294	1	20
140.2295	6	120

### Special pull knife blade

- Blade length 25 mm
- Precise and easy cutting
- Newly developed toothed cutting edge
- Extremely substantial and resilient
- Precise guide on the blade and the cutting edge
- Knife blade can be repeatedly sharpened
- Ideally suited in all standard practice hand cutting knives
- High quality chrome-nickel-nirostasteel



Content		
140.2342	1	15
140.2343	5	90

### Special pull knife blade

- Blade length 38 mm
- Precise and easy cutting
- Newly developed toothed cutting edge
- Extremely substantial and resilient
- Precise guide on the blade and the cutting edge
- Knife blade can be repeatedly sharpened
- Ideally suited in all standard practice hand cutting knives
- High quality chrome-nickel-nirostasteel



Content		
140.2344	1	15
140.2345	5	90

### Special pull knife blade

- Blade length 20 mm
- Precise and easy cutting
- Newly developed toothed cutting edge
- Extremely substantial and resilient
- Precise guide on the blade and the cutting edge
- Knife blade can be repeatedly sharpened
- Ideally suited in all standard practice hand cutting knives
- High quality chrome-nickel-nirostasteel



Content		
140.2340	1	15
140.2341	5	90

### Universal Sharpening stone

- For the sharpening of pull knife blades and universal knife blades machine blades etc
- Hanging hole
- One component handle



Content		
140.2238	L mm	60

### Windscreen cutting wire pull handle set

- Cutting edge wire is attached by means of a cone in the handle
- Ergonomically designed hand grip
- With one component handle



Content		
140.2210	2 pcs	Windscreen cutting wire pull handle set 110

consists of:

Content		
140.2353	Windscreen cutting wire pull handle, single	65

### Windscreen cutting wire pull handle set, heavy execution

- Optimal working in any direction
- Cutting edge wire is attached by means of a cone in the grip
- Ergonomically designed hand grip
- Two component handle



Content		
140.2201	2 pcs	Windscreen cutting wire pull handle set, heavy execution 600

consists of:

Content		
140.2354	Windscreen cutting wire pull handle, heavy execution, single	300

**Wire feeder starter tool**

- For powerful piercing through the glue trim and inserting the cutting edge wire
- Slotted probe end for inserting the cutting wire
- With spring steel blade
- With one component handle



	L mm	g
140.2206	340.0	80

**Cutting wire insertion tool**

- Ideal for confined spaces
- For the optimal usage against stop of the cutting edge wire in the inner area
- Ideal for particularly heavily bonded joints
- Without inner stop to reduce any chance of damage
- With one component handle



	L mm	g
140.2205	350.0	220

**T-handle wire inserting tool**

- For piercing the glue trim and inserting the cutting edge wire
- With steel tube hollow needle
- Aluminium



	L mm	g
140.2207	125.0	60

**Cutting wire set with cutting wire**

- For cutting working
- For cutting of accessible glue pinch welds
- With steel tube hollow needle
- Ergonomically designed hand grip
- Stainless steel wire



		g
140.2250	4 pcs Cutting wire set with cutting wire	270

consists of:

		g
140.2207	T-handle wire inserting tool	60
140.2210	Windscreen cutting wire pull handle-set, 2 pcs	110
140.2214	Square windscreen cutting wire	100

**Cutting wire set with sawing wire**

- Very flexible
- Operates like a saw
- Best suited for cutting of wide and hard glue bondings
- With steel tube hollow needle
- Ergonomically designed hand grip



		g
140.2245	4 pcs Cutting wire set with sawing wire	680

consists of:

		g
140.2207	T-handle wire inserting tool	60
140.2210	Windscreen cutting wire pull handle-set, 2 pcs	110
140.2211	Braided Windscreen cutting wire, 22,5 m	80

**Square windscreen cutting wire**

- Best cutting edge effect
- For cutting working
- Best suited for cutting of wide and hard glue bondings in hard to access areas
- Stainless steel wire



	L m	g
140.2214	22.5	100
140.2215	50.0	200

**Windscreen cutting wire, braided**

- Very flexible
- Operates like a saw
- Best suited for cutting of wide and hard glue bondings in hard to access areas
- Ø 0.8 mm



	L m	g
140.2211	22.5	80
140.2212	50.0	160

**Screen cutting wire, 3 point**

- Best cutting edge effect
- Cutting works
- Best suited to cutting through easily accessible adhesive beading
- Ø 0.8 mm
- Stainless steel wire



	L m	g
140.2213	21.0	93

**Universal one-man operation windscreen removal device**

- Universal usage
- Ideal for the correct and careful removal of adhered front windcreens as well as most rear and side screens
- With large guide rollers, which require less power and minimise the danger of wire snapping
- Wire lead directly in front of the windscreen, therefore omitting the costly disassembly of trim parts in most cases
- Easy one-man operation
- Especially high-quality pump suction for secure windscreen holding
- Suction power per disc up to 110 kg
- Moveable suction disk also for heavily cambered screens
- In durable plastic storage case



		kg
140.2360	5 pcs Universal one-man operation windscreen removal device	4.81

consists of:

		g
140.2331	Screen removal tool, with 2 suction cups	5200
140.2334	Bodkin to 140.2234	56
140.2335	Wire to 140.2330	103
140.2336	Wire directing holder with single suction cup	577
310.0175	Clear eye goggles, sporty design	30





### Windscreen dismantling set

- Ideal for the correct disassembly of adhered front wind-screens as well as most rear and side screens
- The set contains everything needed to remove adhered screens
- Easy operation
- In durable plastic storage case



			kg
140.1040	8 pcs	Windscreen dismantling set	2.78

#### consists of:

			kg
140.2230		Dismantling lever for interior panels	160
140.2231		Double trim strip remover	70
911.8126		Professional-Scraper	90
140.2206		Wire feeder-starter tool	80
140.2213		Cutting wire on a roll	93
140.2241		Standard-Pull cutting knife	240
140.2210		Windscreen cutting wire pull handle-set, 2 pcs	110

### Windscreen repair kit

- Ideal for the correct disassembly of adhered front wind-screens as well as most rear and side screens
- The set contains everything needed to remove adhered screens
- Includes suction cup and trim
- Easy operation
- In durable plastic storage case



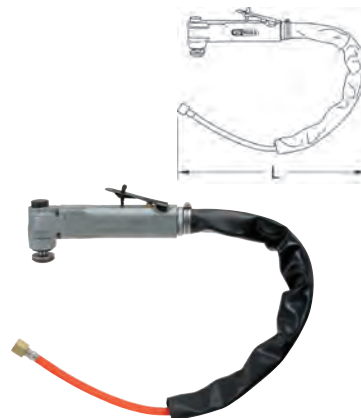
			kg
140.1065	13 pcs	Windscreen repair kit	6.00

#### consists of:

			kg
X			
140.1006	2	2 x Double suction cups up to 80 kg load capacity	730
140.2205	1	Cutting wire take up tool, 350 mm	220
140.2206	1	Wire feeder-starter tool	80
140.2211	1	Braided Windscreen cutting wire, 22,5 m	80
140.2215	1	Roll-cutting wire	200
140.2220	1	Mastic cartridge cutters, 210 mm	420
140.2353	2	Windscreen cutting wire pull handle, single	65
907.2215	1	Pinch weld scraper with quick release system, 11 pcs	100
911.8126	1	Professional-Scraper	90

### Pneumatic oscillating cutter

- 90° offset execution
- Air exhaust through used air tube
- For one handed operation with ergonomic design
- For the professional dismantling of vehicle discs
- Universal blade reception for all standard blades
- Secure operation lever with locking device
- Stepless speed regulation
- Includes 1/4" coupling connector and blade changing spanner
- Robust steel housing



#### Technical data:

Oscillating speed:	2000/min
No load current:	22000 r.p.m.
Vibration:	4,3 m/s <sup>3</sup>
Noise performance level:	79.8 dbA
Noise pressure level:	69.9 dbA
Air consumption:	300 l/min
Operating pressure:	6,3 bar (90 psi)
Min. tube diameter:	3/8" - 10 mm
Connection thread:	1/4"PT

		kg
L	Drive	
mm		
140.2251	725.0	Ø 22 mm 1.27

### Cutting / scraper blades

- For the pneumatic oscillating cutter
- Special steel



		kg
140.2252	Scraper blade, offset, blade width 16 mm	20
140.2255	Cutting blade, straight, offset, length 50 mm	20
140.2256	Cutting blade, straight, offset, length 90 mm	30
140.2261	Cutting blade, angled, offset, cutting depth 55 mm	20
140.2263	Cutting blade, straight, cutting depth 35 mm	10



		kg
515.5093	Scraper blade, curved, curved, blade length 16 mm	13
515.5094	Scraper blade, curved, curved, blade length 36 mm	13
515.5095	Scraper blade, curved, curved, blade length 63 mm	13
515.5096	Scraper blade, curved, curved, blade length 90 mm	25
515.5097	Scraper blade, curved, straight, blade length 24 mm	12

### Pneumatic oscillating cutter set

- 90° offset execution
- Air exhaust through used air tube
- For one handed operation with ergonomic design
- For the professional dismantling of vehicle discs
- Universal blade reception for all standard blades
- Secure operation lever with locking device
- Stepless speed regulation
- Includes 1/4" coupling connector and blade changing spanner
- Robust steel housing



			kg
140.2219	6 pcs	Pneumatic oscillating cutter set	1.51

#### consists of:

			kg
140.2251		Pneumatic-oscillating cutter	1270
140.2252		Scraper blade, offset, blade width 16 mm	20
140.2256		Cutting blade, straight, offset, length 90 mm	30
140.2261		Cutting blade, angled, offset, cutting depth 55 mm	20
140.2263		Cutting blade, straight, cutting depth 35 mm	10
140.2255		Cutting blade, straight, offset, length 50 mm	20

**SUCTION PADS**

**Suction holder set**

- Plastic-coated steel cable with PVC suction cups
- For fixing side windows during work to and on the doors
- Secures freshly adhered windows against slipping
- With suction cups and steel band for optimal hold
- Easy to operate



140.1060	2 pcs	Suction holder set	540
----------	-------	--------------------	-----

**Trim and window mounting set**

- For fixing and holding trims, emblems and windscreen mountings
- Wide side can also be used as a scraper or lever
- With suction cup
- Quick and easy mounting
- Simple to remove by lifting the tab
- Dosing of the contact pressure with the wing nut



140.1020	6 pcs	180.0	85.0	250
----------	-------	-------	------	-----

**Mini vacuum suction cup**

- For lifting, carrying and holding
- For flat and non porous surfaces
- Max. 15 kg carrying capacity - perpendicular to sucker
- Suitable for adjusting and insertion of shower trays
- Solid rubber



140.1004	80.0	55.0	100
----------	------	------	-----

**One handed mini suction cup**

- Practical one-handed operation by lever
- For lifting, carrying and holding
- Quick, easy and correct work on small objects
- Well-suited to adjusting and inserting mirror glass
- Load capacity up to 8 kg
- With release button
- Special plastic



140.1015	Suction cup Ø mm	H mm	L mm	168
	70.0	92.0	115.0	

**Suction pad with folding clamps**

- With sturdy handle
- Creates a vacuum by folding the clamps
- For lifting, carrying and holding or flattening small dents
- For flat and non-porous surfaces
- Quick, easy and correct work on small objects
- Well-suited to transporting bulky items
- Load capacity up to 40 kg
- Special plastic



140.1005	Suction cup Ø mm	Height mm	370
	118.0	40.0	

**Double suction holder**

- With sturdy handle
- The suckers fit to every flat surface and are easy to use with two quick release handles
- Ideal for cambered car windows
- For lifting, carrying and holding
- For flat and non-porous surfaces
- Quick, simple and correct work
- Well-suited to transporting bulky items
- Load capacity up to 80 kg
- Special plastic



140.1006	Suction cup Ø mm	Load capacity kg	730
	120.0	80.0	

**Double suction cup with titling arm**

- With sturdy handle
- The suckers fit to every flat surface and are easy to use with two quick release handles
- Ideal for cambered car windows
- For lifting, carrying and holding
- Suitable for all materials with gas-tight surfaces
- All metal parts made from rust-free steel, making use in swimming pools, outdoor construction sites or in coastal areas possible
- Quick, simple and correct work
- Well-suited to transporting bulky items
- Load capacity up to 80 kg
- Special plastic



140.1008	Suction cup Ø mm	Load capacity kg	1.01
	150.0	80.0	



**Double suction cup set**

- With sturdy handle
- The suckers fit to every flat surface and are easy to use with two quick release handles
- Ideal for cambered car windows
- For lifting, carrying and holding
- For flat and non-porous surfaces
- Quick, simple and correct work
- Well-suited to transporting bulky items
- Load capacity up to 80 kg
- Ratchet belt for fixing the freshly adhered car windscreen
- Special plastic



140.1010	3 pcs	Double suction cup set	1.75
----------	-------	------------------------	------

consists of:

140.1006	2	2 x Double suction cups up to 80 kg load capacity	730
140.1003	1	Ratchet tie down strap	310



### Three way suction holder

- With sturdy handle
- The three suckers fit to every flat surface and are easy to use with two quick release handles
- Ideal for cambered car windows
- For lifting, carrying and moving large parts
- For flat and non-porous surfaces
- Quick, simple and correct work
- Well-suited to transporting bulky items
- Load capacity up to 120 kg
- Special plastic



	Suction cup Ø mm	Load capacity kg	
140.1007	120.0	120.0	1.13



### Quadruple suction pad with movable suckers

- Ideally suited to the assembly and disassembly of large front windscreens
- The four suckers with a handy vacuum pump allow for a secure fit on every flat surface.
- Ideal for cambered car windows
- For lifting, carrying and moving large parts
- For flat and non-porous surfaces
- Quick, simple and correct work
- Well-suited to transporting bulky items
- Load capacity up to 50 kg
- Special plastic
- Aluminium frame

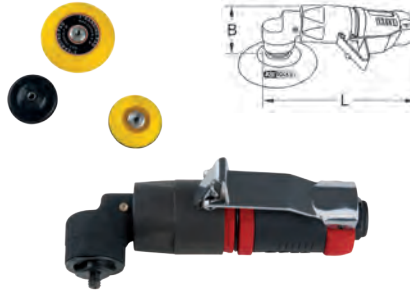


	Length mm	Height mm	Suction cup Ø mm	Load capacity kg	
140.1009	1310.0	280.0	150.0	50	5.80

### GLASS REPAIR

#### SlimPOWER mini-pneumatic burnisher

- 90° offset execution
- Air exhaust through the handle rear end
- For one hand operation
- Ideal for curved cutting
- For working in hard to access areas
- Secure operation lever with locking device
- With stepless speed regulation
- Vibration dampened
- Very compact construction
- Receiver: External thread
- Includes 3 Velcro receivers
- Includes 1/4" coupling connector
- Robust housing



#### Technical data:

Capacity:	190 Watt
No load current:	4000 r.p.m.
Sponge diameter:	50 + 75 mm
Polishing sponge diameter:	46 mm
Vibration:	1,5 ms <sup>2</sup>
Noise performance level:	95 dbA
Noise pressure level:	81 dbA
Air consumption:	240.66 l/min
Min. tube diameter:	1/4" - 4.8 mm
Operating pressure:	max. 5.5 bar (80 psi)
Connection thread:	1/4"

	B mm	L mm	
515.5125	55.0	140.0	600

#### Grinding disc

- With Velcro receiver
- With internal thread receiver



	Ø mm	Material	Content	
515.5101	46,0	flexible	5	275
515.5102	75,0	flexible	5	125
515.5103	46,0	rigid	5	55

#### Burnishing pads

- For burnishing of smooth surfaces



	Ø mm	Material	Colour code	Content	
515.5126	50,0	plastic	yellow	5	10
515.5122	85,0	plastic	yellow	5	55
515.5127	50,0	plastic	white	5	10
515.5123	85,0	plastic	white	5	55
515.5128	50,0	plastic	black	5	10
515.5129	50,0	leather		5	48
515.5124	80,0	leather		5	80

### Mini pneumatic burnisher set

- For hard to reach places and improvement work
- With non-slip soft-grip-handle
- 90° offset execution
- Air exhaust through the handle rear end
- For one hand operation
- Ideal for curved cutting
- For working in hard to access areas
- Vibration dampened
- Very compact construction
- Grinding disc with Velcro
- Includes 1/4" coupling connector
- Receiver: Internal thread
- Robust housing
- In durable plastic storage case



#### Technical data:

No load current:	2500 r.p.m.
Vibration:	1,5 ms <sup>2</sup>
Noise performance level:	92 dbA
Noise pressure level:	81 dbA
Air consumption:	113 l/min
Operating pressure:	max. 5.2
Min. tube diameter:	10 mm
Connection thread:	1/4"

515.5120	5 pcs Mini pneumatic burnisher set	1.96

#### consists of:

515.5121	1/4" mini burnishing machine	1000
515.5122	Burnishing pads yellow, Ø 85,0mm	55
515.5123	Burnishing pads white, Ø 85,0mm	55
515.5124	Burnishing pads, Ø 80,0mm	80
515.5112	Grinding disc Ø76.5 mm	20

#### Grinding disc

- With Velcro receiver
- With external thread receiver

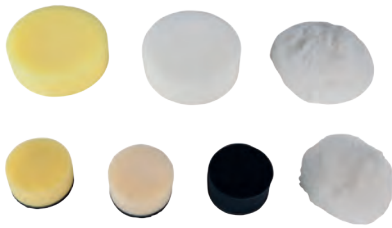


	Ø mm	Material	Content	
515.5113	46,0	flexible	5	13
515.5112	76,5	flexible	5	20



**Burnishing pads**

- For burnishing of smooth surfaces



	Ø mm	Material	Colour code	Content	g
515.5126	50,0	plastic	yellow	5	10
515.5122	85,0	plastic	yellow	5	55
515.5127	50,0	plastic	white	5	10
515.5123	85,0	plastic	white	5	55
515.5128	50,0	plastic	black	5	10
515.5129	50,0	leather		5	48
515.5124	80,0	leather		5	80

**SCRAPERS**

**Scraper**

- Ideal for removing stickers, seal and glue residues
- With easily interchangeable blades
- With reinforcement eyelet
- Plastic handle



	Length mm	Width mm	g
911.8126	160.0	38.0	911.8127 90

**Scraper**

- Ideal for removing stickers, seal and glue residues
- With easily interchangeable blades
- With reinforcement eyelet
- Scraper blade retractable via spline end for protection
- With metal housing

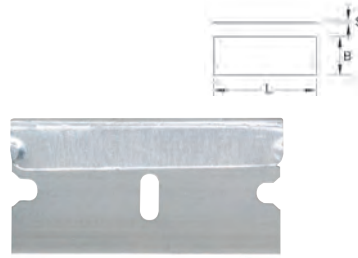


	Length mm	Width mm	g
907.2240	110.0	39.0	911.8127 90

**Replacement scraper blades**

- For all standard scrapers
- SK steel
- In a carton

**Application range:** for the removal of labels on bumpers, front windscreens, etc.



Content	L mm	B mm	S mm	g
911.8127	5	40.0	19,5	0.29 40

**Replacement plastic scraper blades**

- For all standard scrapers
- Particularly gentle on materials, since no scratches can be made
- Dual-sided adjustment
- Plastic
- In a carton

**Application range:** for the removal of labels on bumpers, front windscreens, etc.



	L mm	B mm	S mm	g
911.8128	10 pcs	40.0	18,5	1.10 2

**Pinch weld scraper set**

- Ideal for removing of stickers, seal and glue residues
- Simple blade change by loosening the knurled thumb screw on the chuck
- With 10 straight scraper blades 16 mm
- Scraper with two component handle



	g
907.2215	11 pcs Pinch weld scraper set 100

consists of:

	g
907.2201	Dual component scraper handle with chuck holder for blades 60
907.2203	Replacement blades 16 mm wide/straight, 10 pcs. 20

**Knife scraper set**

- Ideal for removing of stickers, seal and glue residues
- Simple blade change by loosening the knurled thumb screw on the chuck
- Practical storage system for changeable blades
- Suitable for many different application due to the wide range of blades
- Scraper with two component handle
- Professional universal knife with aluminium housing
- In durable plastic case



	g
907.2200	27 pcs Knife scraper set 600

consists of:

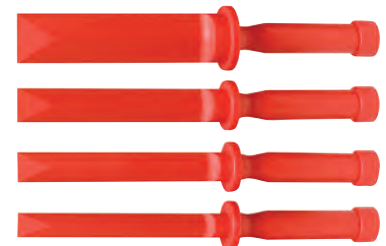
	g
907.2170	Professional universal knife solid 90
907.2201	Dual component scraper handle with chuck holder for blades 60
907.2202	Replacement blades 12 mm wide/straight, 10 pcs. 20
907.2203	Replacement blades 16 mm wide/straight, 10 pcs. 20
907.2204	Replacement blades 16 mm wide/angled 53° 10 pcs. 20
907.2205	Replacement blades 20 mm wide/straight, 10 pcs. 40
907.2206	Trapezoid blades,holder with 10 blades 60

**Replacement blades:**

	Width mm	Form	Content	g
907.2202	12.0	straight	10	20
907.2204	16.0	53° angled	10	20
907.2203	16.0	straight	10	20
907.2205	20.0	straight	10	40

**Glassfibre chisel set**

- For paint preserving removal of ornament and window strips
- Flexible chisel blade
- Impact cap for light impacts
- Ergonomic handle
- Special plastic



	g
911.8130	4 pcs 19 - 22 - 26 - 38 mm 570

consists of:

	g
911.8131	Glassfibre chisel, 19 mm 130
911.8132	Glassfibre chisel, 22 mm 140
911.8133	Glassfibre chisel, 26 mm 150
911.8134	Glassfibre chisel, 38 mm 180

### Glassfibre chisel

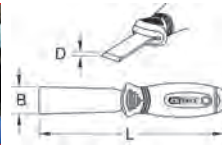
- For paint preserving removal of ornament and window strips and wheel weights on aluminium rims
- Flexible chisel blade
- Impact cap for light impacts
- Ergonomic handle
- Special plastic



	A mm	g
911.8131	19.0	130
911.8132	22.0	140
911.8133	26.0	150
911.8134	38.0	180

### STAINLESS STEEL Chisel scraper

- Ideal for removing stickers, seal and glue residues
- Also suitable for the removal and chiselling of plates or welding spots
- Heavy, continuous stainless steel blade that can be re-sharpened
- With reinforcement eyelet
- With hammer cap on the handle
- With ergonomic moulded two component handle
- Suitable for use at extremely low temperatures
- Extreme resistance to intergranular corrosion and oxidation
- Extremely long service life
- Autoclavable (heating of the tools to over 100 °C to kill germs)
- Rust-proof and acid resistant
- Stainless steel



	B mm	D mm	L mm	g
907.2211	32.0	1.2	190.0	160
907.2213	25.0	1.2	165.0	100
907.2212	32.0	2.5	190.0	160
907.2214	25.0	2.5	165.0	110

### STAINLESS STEEL Chisel scraper set

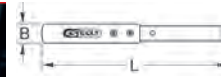
- Ideal for removing stickers, seal and glue residues
- Also suitable for the removal and chiselling of plates or welding spots
- Heavy, continuous stainless steel blade that can be re-sharpened
- With reinforcement eyelet
- With hammer cap on the handle
- With ergonomic moulded two component handle
- Suitable for use at extremely low temperatures
- Extreme resistance to intergranular corrosion and oxidation
- Extremely long service life
- Autoclavable (heating of the tools to over 100 °C to kill germs)
- Rust-proof and acid-resistant
- Stainless steel



	g
907.2210 4 pcs 32 x 1,2; 32 x 2,5; 25 x 1,2; 25 x 2,5 mm	580

### Pinch weld scraper

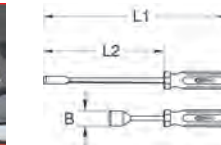
- Ideal for removing stickers, seal and glue residues
- With interchangeable spring steel blade
- Working length max. 115 mm
- Aluminium handle



	B mm	L mm	g
140.2282	13.0	240.0	140.2283 200
140.2286	16.0	240.0	140.2287 200
140.2288	19.0	240.0	140.2289 200

### Gasket scraper

- Ideal for removing stickers, seal and glue residues
- Blades can be re-sharpened
- Blade 10° angled
- Extra-long design for hard to reach areas
- Also for removing extremely stubborn impurities and seal residue
- With ergonomic moulded one component handle



	B mm	L1 mm	L2 mm	g
907.2231	12.5	200.0	100.0	120
907.2232	25.0	200.0	100.0	140
907.2233	12.5	300.0	200.0	180
907.2234	25.0	300.0	200.0	200

### Gasket scraper set

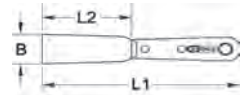
- Ideal for removing stickers, seal and glue residues
- Blades can be re-sharpened
- Blade 10° angled
- Extra-long design for hard to reach areas
- Also for removing extremely stubborn impurities and seal residue
- With ergonomic moulded one component handle



	g
907.2230 4 pcs 12,5 x 200; 25 x 200; 12,5 x 300; 25 x 300 mm	1,28

### Chisel scraper

- Ideal for removing stickers, seal and glue residues
- Also for removing extremely stubborn impurities and seal residue
- Blade 10° angled
- Blades can be re-sharpened
- Rust-proof and acid-resistant
- Wooden handle



	B mm	L1 mm	L2 mm	g
907.2266	15.0	175.0	50.0	42
907.2267	20.0	185.0	60.0	50
907.2268	30.0	190.0	65.0	57

### Chisel scraper set

- Ideal for removing stickers, seal and glue residues
- Also for removing extremely stubborn impurities and seal residue
- Blade 10° angled
- Blades can be re-sharpened
- Rust-proof and acid-resistant
- Wooden handle
- In durable plastic storage case



	g
907.2270 3 pcs Chisel scraper set	150

### consists of:

	g
907.2266 Chisel scraper, 15 x 175 mm	42
907.2267 Chisel scraper, 20 x 185 mm	50
907.2268 Chisel scraper, 30 x 190 mm	57

### NOZZLE CARTRIDGE PLIERS

#### Cartridge tip pliers

- Ideally suited to cut the ejection nozzle of cartridges or bags as required
- With toothed cutting blade made from solid steel
- With safety locking device
- Allows for the required V cut for windscreen seals and therefore optimised adhesive trim
- Easy to use
- With PVC dipped handle
- Chrome vanadium



	A mm	L mm	S mm	g
140.2220	33.0	210.0	20.0	420

**HAND PISTOL CARTRIDGES**

**Hand gun for double cartridges**

- For 2 component adhesives
- For gluing front windscreens as well as most rear and side windows
- Also suitable for double cartridge systems with epoxy hardeners
- Exact dosing
- Cornered cartridge seating
- Robust metal design



	L mm	H mm	
980.1080	300.0	170.0	500

**Hand cartridge gun 310 ml**

- For working with cartridges and soft packs
- Quick and easy cartridge changes
- For gluing front windscreens as well as most rear and side windows
- Can also be used for bodywork sealant, seam adhesive, etc.
- Plastic housing
- Robust end parts



	L mm	H mm	Replacement nozzle	
980.1000	340.0	210.0	980.1001	750

**Hand cartridge gun 600 ml**

- For working with cartridges and soft packs
- Quick and easy cartridge changes
- For gluing front windscreens as well as most rear and side windows
- Can also be used for bodywork sealant, seam adhesive, etc.
- Plastic housing
- Robust end parts



	L mm	H mm	Replacement nozzle	
980.3000	480.0	210.0	980.1001	1.10

**Rodless cartridge gun 310 ml**

- No protruding push rod and therefore very suitable for confined working environments
- For working with cartridges
- Quick and easy cartridge changes
- For gluing front windscreens as well as most rear and side windows
- Can also be used for bodywork sealant, seam adhesive, etc.
- Centralised grip for optimal load distribution
- With integrated steel spring band
- Includes level indicator display
- With belt connector
- Metal cartridge holder
- Plastic handle



	L mm	H mm	
980.3050	340.0	200.0	825

**BATTERY CARTRIDGE PISTOL**

**Cordless cartridge gun 310 ml**

- Handy and ergonomic dual component housing
- Ideal for glue, silicone or acrylic based cartridges
- For gluing front windscreens as well as most rear and side windows
- Can also be used for bodywork sealant, seam adhesive, etc.
- Drip-free mechanism
- Step-free controllable feed
- Carbon brushes interchangeable
- Lithium-ion high performance rechargeable battery
- Throughput per battery at ~ 20 °C up to 15 cartridges
- Longer running time through higher load capacity
- Fast charging function (1 hour)
- Automatic switch-off charge station
- Blow mould plastic housing
- In durable plastic storage case



**Technical data:**

Capacity:	10,8 V
Capacity of the unit:	310 ml
Propulsion without load:	6,1 mm / sec
Output pressure:	392 kgf
Charging time:	1 hour
Rechargeable battery:	10,8 V - 1,5 Ah

	L mm	B mm	H mm	Spare carbon brushes set	Battery pack	Number of Charger batteries		
515.3569	410.0	138.0	245.0	515.3595	515.3592	0	0	3.60
515.3570	410.0	138.0	245.0	515.3595	515.3592	1	1	4.50
515.3571	410.0	138.0	245.0	515.3595	515.3592	2	1	4.70

**Cordless cartridge gun 400 ml**

- Handy and ergonomic dual component housing
- Ideal for glue, silicone or acrylic based cartridges
- For gluing front windscreens as well as most rear and side windows
- Drip-free mechanism
- Step-free controllable feed
- Carbon brushes interchangeable
- Lithium-ion high performance rechargeable battery
- Throughput per battery at ~ 20 °C up to 15 cartridges
- Longer running time through higher load capacity
- Fast charging function (1 hour)
- Automatic switch-off charge station
- Blow mould plastic housing
- In durable plastic storage case



**Technical data:**

Capacity:	10,8 V
Capacity of the unit:	400 ml
Propulsion without load:	6,1 mm / sec
Output pressure:	392 kgf
Charging time:	1 hour
Rechargeable battery:	10,8 V - 1,5 Ah

	L mm	B mm	H mm	Spare carbon brushes set	Battery pack	Number of Charger batteries		
515.3574	450.0	138.0	245.0	515.3596	515.3592	0	0	3.70
515.3575	450.0	138.0	245.0	515.3596	515.3592	1	1	4.60
515.3576	450.0	138.0	245.0	515.3596	515.3592	2	1	4.80

**Cordless cartridge gun 600 ml**

- Handy and ergonomic dual component housing
- Ideal for glue, silicone or acrylic based cartridges
- For gluing front windscreens as well as most rear and side windows
- Can also be used for bodywork sealant, seam adhesive, etc.
- Drip-free mechanism
- Step-free controllable feed
- Carbon brushes interchangeable
- Lithium-ion high performance rechargeable battery
- Throughput per battery at ~ 20 °C up to 15 cartridges
- Longer running time through higher load capacity
- Fast charging function (1 hour)
- Automatic switch-off charge station
- Blow mould plastic housing
- In durable plastic storage case



**Technical data:**

Capacity:	10,8 V
Capacity of the unit:	600 ml
Propulsion without load:	6,1 mm / sec
Output pressure:	392 kgf
Charging time:	1 hour
Rechargeable battery:	10,8 V - 1,5 Ah

	L mm	B mm	H mm	Spare carbon brushes set	Battery pack	Number of Charger batteries		
515.3579	560.0	138.0	245.0	515.3595	515.3592	0	0	4.10
515.3580	560.0	138.0	245.0	515.3595	515.3592	1	1	5.10
515.3581	560.0	138.0	245.0	515.3595	515.3592	2	1	5.20



## PRESSURISED AIR PISTOL CARTRIDGES

### Pneumatic cartridge pistols 310 ml

- For working with cartridges and soft packs
- Ideal for glue, silicone or acrylic based cartridges
- For gluing front windscreens as well as most rear and side windows
- Can also be used for bodywork sealant, seam adhesive, etc.
- Perfect run in the cartridge cylinder with the telescopic principle and therefore no cylinder tipping or air intake
- Drip-free mechanism
- Step-free controllable feed
- With two adapters for cartridges and bags
- With safety pressure release valve
- Includes pneumatic regulator for discharge speed
- Handy and ergonomic dual component housing
- Aluminium housing
- Plastic handle



#### Technical data:

Compressive force:	90 kg
Operating pressure:	max. 6,3 kg/cm <sup>2</sup> (90psi)
Max. flow rate:	40 l/min
Noise pressure level:	70 dbA
Connection thread:	1/4"PT

	L mm	H mm	Replacement nozzle	kg
515.1975	400.0	200.0	515.1976	1.00

### Pneumatic cartridge pistols 600 ml

- For working with cartridges and soft packs
- Ideal for glue, silicone or acrylic based cartridges
- For gluing front windscreens as well as most rear and side windows
- Perfect run in the cartridge cylinder with the telescopic principle and therefore no cylinder tipping or air intake
- Drip-free mechanism
- Step-free controllable feed
- With two adapters for cartridges and bags
- With safety pressure release valve
- Includes pneumatic regulator for discharge speed
- Handy and ergonomic dual component housing
- Aluminium housing
- Plastic handle



#### Technical data:

Compressive force:	90 kg
Operating pressure:	max. 6,3 kg/cm <sup>2</sup> (90psi)
Max. flow rate:	40 l/min
Noise pressure level:	70 dbA
Connection thread:	1/4"PT

	L mm	H mm	Replacement nozzle	kg
515.1985	620.0	200.0	515.1976	1.30

## ASSEMBLY SPATULA

### Plastic assembly spatula flat/round

- Universal usage
- For careful assembly and disassembly
- For lifting and adjusting rubber seals
- Optimal removal of glue residue
- Special plastic



	L mm	B mm	kg
911.8116	200.0	17.0	20

### Plastic assembly spatula round/round

- Universal usage
- For careful assembly and disassembly
- For lifting and adjusting rubber seals
- Optimal removal of glue residue
- Special plastic

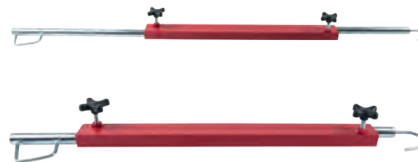


	L mm	B mm	kg
911.8117	200.0	17.0	20

## AID

### Engine compartment and tail gate supports

- Ideal for working on the engine compartment or tail gate, e.g. when replacing the dampers
- Tail gate can be locked into any position required
- Fully adjustable
- With practical fastening mechanism
- Special steel



	Length mm	kg
140.2199	650 - 1500	1.80



## Pannel gap gauge set

- For adjusting and inserting car windscreens and body parts
- Adjustments on the body with revolving, ball bearing mounted construction
- The gap size gauge can be adjusted 3 dimensionally and can be positioned problem-free according to the required demands
- The 10 distance plates allow for a precise setting of the gap size
- Original size can be decreased with gauge beforehand by an undamaged side
- No damage or scratches on recently painted parts
- With reinforcement screw
- Plastic



	L mm	B mm	H mm	kg	
150.1570	3 pcs	110	20.0	45.0	100

## Ultrasound leak detector

- Acoustic locating of leaks on bodywork
- Receiver is passed externally along the bodywork
- Simplifies cause investigation for wind noise and water leaks
- In a practical storage case



	kg	
150.1690	Ultrasound leak detector	460

# KSTOOLS APP

