

K15



KS TOOLS



ENGINE - GLOW PLUGS



Innovation is
our mission!



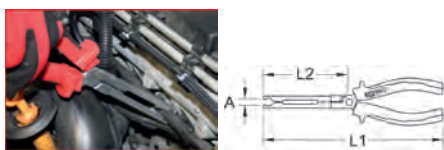
	PAGE
GLOW PLUG CONNECTOR PLIERS	268
STANDARD NUT SOCKETS FOR GLOW PLUGS	268 - 269
GLOW PLUG SCREWING AID	269
TORQUE TOOLS	270
RATCHET RING SPANNER	270
ELECTRODE HEAD EXTRACTION TOOL	270
GLOW PLUG EXTRACTOR TOOLS	270 - 271
REAMER FOR CLEANING	271 - 272
GLOW PLUG DRILL OUT TOOLS	272 - 273
GLOW PLUG THREAD CUTTING TOOL	273 - 274
GLOW PLUG THREAD REPAIR	274 - 276
THREAD GAUGES	276
TEST DEVICE	276

GLOW PLUG CONNECTOR PLIERS

Glow plug pliers

- Suitable for very firmly seated glow plugs
- For the expert installation and removal of glow plugs
- Specially milled plier profile for positive holding
- For difficult to access areas
- With two component handle
- Special tool steel

Application range: Modern diesel engines, e.g. Mercedes, BMW, Volkswagen-Audi



	A mm	L1 mm	L2 mm	g
500.7330	0-125	265.0	95.0	400

Glow plug pliers, angled

- Glow plug-plier, angled
- Suitable for very firmly seated glow plugs
- For the expert installation and removal of glow plugs
- Specially milled plier profile for positive holding
- Angled head
- For difficult to access areas
- With two component handle
- Special tool steel

Application range: Modern diesel engines, e.g. Mercedes, BMW, Volkswagen-Audi



	A mm	L1 mm	L2 mm	g
500.7310	0-105	235.0	120.0	400

Glow plug dismantling pliers

- With rubber dipped handle
- Serrated jaws
- Length wise mounted handle arranged at the plier jaw
- With self-opening mechanism
- In order to pull out the glow plugs from the glow plug canal in the cylinder head
- Allows the removal of firmly seated and difficult to access glow plug connectors
- Also possible to extract incomplete glow plugs
- Optimum power transmission with rotary and train movements
- Universal usage
- Special tool steel



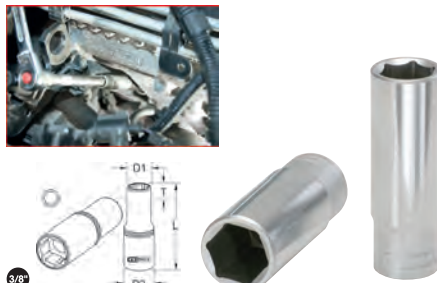
	A mm	L1 mm	L2 mm	g
500.7335	0-35	260.0	40.0	280

STANDARD NUT SOCKETS FOR GLOW PLUGS

Glow plug special socket 8 mm

- 6-point
- For installing and removing the glow plugs
- For use on engines with glow plugs at the top of the cylinder head below the valve cover, standard flexible spanners cannot be used here
- FlankTraction profile
- Internal square to DIN 3120/ISO 1174 with ball reception
- Long design
- For manual operation
- Matt finish
- Chrome vanadium

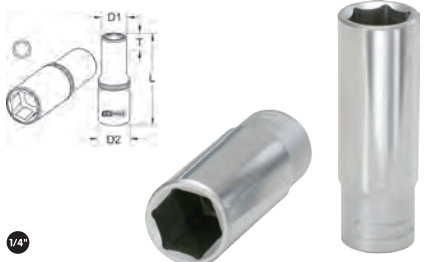
Application range: Volkswagen-Audi 2.0 TDI engines (engine code: BKP, etc.) e.g. Volkswagen Passat 3C



	mm	D1 mm	D2 mm	L mm	T mm	g
917.3828	8,0	12,0	16,0	63,0	10,0	110

Glow plug special socket 10 mm

- 6-point
- For installing and removing the glow plugs
- Very narrow design
- FlankTraction profile
- Internal square to DIN 3120/ISO 1174 with ball reception
- Long design
- For manual operation
- Matt finish
- Chrome vanadium



	mm	D1 mm	D2 mm	L mm	T mm	g
500.1410	10,0	13,5	11,0	50,0	10,0	110

Glow plug special socket 10 mm

- 6-point
- For installing and removing the glow plugs
- For use on engines with glow plugs at the top of the cylinder head below the valve cover, standard flexible spanners cannot be used here
- FlankTraction profile
- Internal square to DIN 3120/ISO 1174 with ball reception
- Long design
- For manual operation
- Matt finish
- Chrome vanadium

Application range: 1.5 dCi engines (engine code: K9K) for Renault, Dacia, Nissan



	mm	D1 mm	D2 mm	L mm	T mm	g
917.3830	10,0	15,0	18,0	63,0	11,0	110

PSG glow plug socket 12 mm, incl. 5 PSG protection caps

- 6-point
- For the safe assembly and removal of PSG glow plugs
- Can also be used for removal/assembly of standard glow plug with 12 mm
- Supplied 5 PSG glow plug protective caps prevent electrostatic charging and contamination of the PSG glow plugs
- Integrated ball and outer ring for secure holding of the glow plug
- Breaking moment of the PSG glow plugs at 22 Nm
- Glow plugs must only be strained up to 12 Nm
- Internal square drive to DIN 3120/ISO 1174 with ball reception
- Matt finish
- Chrome vanadium

Application range: A4/S4 (Avant/Quattro) 3.0 I from 11/09; Q7 3.0 I from 11/08; Touareg 3.0 I from 02/09; Golf (Variant/4motion) 2.0 I from 09/09; Insignia (Sports Tourer) 2.0 CDTI from 03/09; Insignia (Bi Turbo) 2.0 CDTI from 07/08; Meriva B (CDTI) 1.3 I from 03/10; Astra J 1.3 I 03/10



	mm	Replacement protective cap	g
500.7345	12,0	500.7345-01	49

Special glow plug socket

- For the safe assembly and removal of glow plugs
- Socket with side slot
- Does not destroy the connector cable
- Simple handling
- For difficult to access areas
- External drive hexagonal socket 10.0 mm
- Simple handling
- Special steel

Application range: Alfa Romeo 147,156,159, GT; Fiat Bravo, Stilo; Opel Astra, Signum, Vectra-C, Zafira; Saab 93,95



	mm	Length mm	g
500.7351	8,0	50,0	20
500.7352	9,0	50,0	20
500.7353	10,0	50,0	20

Special glow plug socket set

- For the safe assembly and removal of glow plugs
- Socket with side slot
- Does not destroy the connector cable
- Simple handling
- For difficult to access areas
- Simple handling
- Special steel

Application range: Alfa Romeo 147,156,159, GT; Fiat Bravo, Stilo; Opel Astra, Signum, Vectra-C, Zafira; Saab 93,95



500.7350	3 pcs	Special glow plug socket set	120
----------	-------	------------------------------	-----

consists of:

500.7351	Special glow plug socket, 8 mm	20
500.7352	Special glow plug socket, 9 mm	20
500.7353	Special glow plug socket, 10 mm	20

Glow plug flexible socket

- 6 point
- Internal square drive to DIN 3120 / ISO 1174 with ball reception
- Short execution
- For the safe disassembly and assembly of glow plugs
- For difficult to access areas
- Suitable for all current glow plugs
- Screwed universal joint
- Inclusive rubber rings for safe holding of the glow plug
- Matt finish
- Chrome vanadium



	mm	L mm	g
500.7301	8,0	75,0	70
500.7302	9,0	75,0	70
500.7303	10,0	75,0	70
500.7304	12,0	75,0	70
500.7305	14,0	80,0	80
500.7306	16,0	80,0	100

Glow plug flexible socket set

- 6 point
- Internal square drive to DIN 3120 / ISO 1174 with ball reception
- Short execution
- For the safe disassembly and assembly of glow plugs
- For difficult to access areas
- Suitably for all current glow plugs
- Screwed universal joint
- Inclusive rubber rings for safe holding of the glow plug
- Matt finish
- Chrome vanadium



500.7300	6 pcs	Glow plug flexible socket set	610
----------	-------	-------------------------------	-----

consists of:

500.7301	3/8" glow plug articulated socket, short, 75 mm, 8 mm	70
500.7302	3/8" glow plug articulated socket, short, 75 mm, 9 mm	70
500.7303	3/8" glow plug articulated socket, short, 75 mm, 10 mm	70
500.7304	3/8" glow plug articulated socket, short, 75 mm, 12 mm	70
500.7305	3/8" glow plug articulated socket, short, 75 mm, 14 mm	80
500.7306	3/8" glow plug articulated socket, short, 75 mm, 16 mm	100

Glow plug flexible socket, long

- 6 point
- Internal square drive to DIN 3120 / ISO 1174 with ball reception
- Long execution
- For the safe disassembly and assembly of glow plugs
- For difficult to access areas
- Suitable for all current glow plugs
- Screwed universal joint
- Inclusive rubber rings for safe holding of the glow plug
- Matt finish
- Chrome vanadium



	mm	L mm	g
500.7311	8,0	150,0	190
500.7312	9,0	150,0	190
500.7313	10,0	150,0	190
500.7314	12,0	150,0	190
500.7315	14,0	160,0	190
500.7316	16,0	160,0	190

Glow plug swivel wrench set, long

- 6 point
- Internal square drive to DIN 3120 / ISO 1174 with ball reception
- Long execution
- For the safe disassembly and assembly of glow plugs
- For difficult to access areas
- Suitable for all current glow plugs
- With screwed universal joint
- Inclusive rubber rings for safe holding of the glow plug
- Matt finish
- Chrome vanadium
- In durable plastic storage case



500.7320	6 pcs	Glow plug swivel wrench set, long	1.40
----------	-------	-----------------------------------	------

consists of:

500.7311	3/8" glow plug articulated socket, long, 150 mm, 8 mm	190
500.7312	3/8" glow plug articulated socket, long, 150 mm, 9 mm	190
500.7313	3/8" glow plug articulated socket, long, 150 mm, 10 mm	190
500.7314	3/8" glow plug articulated socket, long, 150 mm, 12 mm	190
500.7315	3/8" glow plug articulated socket, long, 150 mm, 14 mm	190
500.7316	3/8" glow plug articulated socket, long, 150 mm, 16 mm	190

GLOW PLUG SCREWING AID

Spark plug screw in tool, double sided

- For universal applications spark plug and glow plugs
- For the clean and preparing of the first thread gears
- Especially in common rail glow plugs
- Double sided usage
- Solid rubber



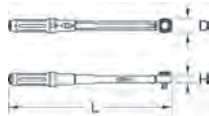
	L mm	g
500.7520	240,0	75

1
2
3
4
5
6
7
8
9
10
11
12
13
14
15
16
17
18
19
20
21
22
23
24
25
26

TORQUE TOOLS

ERGOTORQUE® precision torque wrench with rotary mushroom ratchet head

- Actuation accuracy: $\pm 3\%$ tolerance of the set scale value
- Precise reading accuracy for a minimum 5.000 tightening cycles
- For controlled fastening in clockwise and counter clockwise directions
- Torque setting by pulling out and pushing in the slide in knob at the end of the handle
- The direction of rotation (clockwise and counter clockwise) can be changed by simply rotating the square drive piece
- Double scale in N·m and lbf·ft divisions for precise adjustment
- Includes micrometer scale in N·m divisions for precise and fine adjustment
- Large vision panel, precise adjustment using a magnifying glass
- An audible and palpable signal when the desired torque value is achieved
- Exact gearing 72 teeth ratchet mechanism
- Torque setting is quick and easy using the locking knob in the handle end
- Secure locking function within the handle
- Two component handle with a soft zone, is ergonomic in design and comfortable in the hand
- Square drive adaptor to DIN 3120 - ISO 1174 with ball lock
- Individually marked with serial number unique product identification
- Includes test certificate in accordance with DIN EN ISO 6789:2003 national standard



3/8"

	N·m	Division	lbf·ft	L	D	H		
	N·m	N·m		mm	mm	mm	kg	
516.1422	3/8"	5-50	0.25	4 - 37	350.0	45.0	23.0	0.61

RATCHET RING SPANNER

Glow plug double ring ratcheting spanner, offset

- FlankTraction profile
- 45° angled
- Very narrow design
- Long design
- For installing and removing the glow plugs
- Ideal for use in difficult to access areas
- 8 mm for actuation of the power rails screw
- With stop for guiding the 8 mm nut
- 12 mm for actuation of the glow plugs
- Matt finish
- Chrome vanadium

Application range: Audi, BMW, Mercedes, Peugeot, Renault, Seat, Skoda, Volkswagen, etc.



	A1	A2	B1	B2	L		
mm	mm	mm	mm	mm	mm	kg	
503.0812	8x12	11.0	11.0	26.0	21.0	300.0	260

Glow plug T-handle ring ratchet wrench

- 6 point
- T-handle
- For extremely heavily deposited glow plugs
- Right or left handed usage through the turning of the head
- Special steel

Application range: dim. 8 for electric cable nut in diesel motors (Volkswagen, Audi, Seat etc.) dim. 10 + 12 for glow plugs and hand brake adjustment



	mm	L	
	mm	mm	g
500.7340	8,0	295,0	175
500.7341	10,0	295,0	180
500.7342	12,0	300,0	195
500.7343	14,0	300,0	200

ELECTRODE HEAD EXTRACTION TOOL

Glow plug electrode head extraction tool

- Special profile
- For removing the electrode head or protruding central electrode
- For electrode diameters 2.5 - 3.5 - 4.0 mm
- Safe clamping due to rollers
- Internal square drive to DIN 3120/ISO 1174 with ball stop
- With external drive hexagonal socket 12.0 mm
- Special steel



	Ø	Outer Ø	L	
	mm	mm	mm	g
500.1401	2,5	13,4	50,0	41
500.1402	3,5	13,4	50,0	41
500.1403	4,0	13,4	50,0	53



GLOW PLUG EXTRACTOR TOOLS

Glow plug extractor for CDI engines

- For turning off and pulling out the glow plugs from the glow plug canal in the cylinder head
- Removal of the cylinder head is not necessary for disassembly
- Can be used on glow plugs jammed by corrosion and/or soot coal
- Optimum power transmission with rotary and train movements
- Fits all glow plugs with hexagonal connector 10.0 mm
- Correct easy and damage free removal of the glow plug
- Chrome vanadium

Application range: Mercedes CDI engines OM 611, 612, 613



3/8"

		L	
	mm	mm	g
152.1080	3/8"	190.0	315

Glow plug impact extraction set for CDI engines

- Ideal for unscrewed, but firmly seated glow plugs
- Can be used universally for M10 glow plugs
- Reaches into the electrical connection of the glow plugs with the support sleeve or impact hammer the glow plug is removed
- On engines for which the support sleeve cannot be used, the impact hammer is used
- Easy to fit
- Safe to use
- No sharp edges
- Saves a lot of time
- Special steel

Application range: Mercedes CDI engines OM 611, 612, 613



				kg
700.1330	4 pcs	Glow plug impact extraction set for CDI engines		2.00

consists of:

			kg
700.1331	Special impact hammer		1.50
700.1332	Glow plug puller set, 3 pcs.		0.50

Glow plug puller for CDI engines

- Ideal for unscrewed, but firmly seated glow plugs
- Can be used universally for M10 glow plugs
- Reaches into the electrical connection of the glow plugs with the support sleeve or impact hammer the glow plug is removed
- Easy to fit
- Safe to use
- No sharp edges
- Saves a lot of time
- Special steel

Application range: Mercedes CDI engines OM 611, 612, 613, 646 (excluding 646 EVO), 647, 648, etc.



	Ø mm	L mm	kg
152.1096	10,0	133,0	280

Glow plug service set

- For removing the glow plugs from the glow plug channel in the cylinder head
- Reamer for cleaning the glow plug channel in the cylinder head
- Removes deposits and carbonisation between glow plug and cylinder head
- Can be used for glow plugs jammed by corrosion and/or soot coal
- In durable plastic storage case

Application range: Reamer M10 x 1.00: Mercedes 4, 5 and 6 cylinder CDI engines, Smart CDI (660) reamer M12 x 1.25: Mercedes 4 valve technology engines (OM604/605/606) glow plug puller: Glow plugs 10.0 mm e.g. Mercedes CDI (OM 611/612/613)



	kg
152.1095 3 pcs Glow plug service set	596

consists of:

	kg
152.1096 Glow plug extractor for dim. 10 mm	280
152.1097 Glow plug reamer M10 x 1.00:	50
152.1098 Glow plug reamer M12 x 1.25:	80

Glow plug vibration extractor set

- Ideal for loosening and extracting jammed glow plugs
- Especially suitable in glow plugs jammed by corrosion and/or soot coal
- Produces controlled vibration impulse
- Suitable for all current glow plugs
- Loosening torque in 4 stages in accordance with manufacturer guidelines
- Extensive cost intensive repairs can be avoided through dismantling glow plugs
- Includes 1/4" coupling connector
- In durable steel storage case



Technical data:

Square drive:	1/4"
Max. tightening torque:	40 Nm
Max. loosening torque:	1 = 10 Nm
	2 = 20 Nm
	3 = 30 Nm
	4 = 40 Nm
No load current:	7500 r.p.m.
Vibration:	< 2,69 ms ²
Noise performance level:	104 dbA
Noise pressure level:	88 dbA
Recommended torque:	42 Nm
Air consumption:	128 l/min
Operating pressure:	max. 6,3 (90 psi)
Max. screw size:	M16
Min. tube diameter:	3/8" - 10 mm
Connection thread:	1/4"PT

	kg
152.1060 5 pcs Glow plug vibration extractor set	1.80

consists of:

	kg
152.1061 1/4" Vibration extractor 10-40 N·m	900
152.1062 1/4" Impact wrench socket long 8 mm	30
152.1063 1/4" Impact wrench socket long 10 mm	40
152.1064 1/4" Impact wrench socket long 12 mm	50
152.1065 1/4" Universal joint	40



REAMER FOR CLEANING

3 in 1 glow plug reamer M8 x 1.0

- Special reamer geometry cleans the glow plug shaft, sealing seat and glow rod channel in a single step
- For professional cleaning of glow plug channels in the cylinder head of sizes M8 x 1.0
- Removes deposits between the glow plugs and cylinder head
- Damage due to deep penetration and slipping of the reamer is prevented by fixable stoppers
- Includes a centring sleeve with thread of the corresponding glow plug
- Prior to fitting new glow plugs it is recommended to clean the glow plug shafts
- Universal usage
- External hexagon drive 10.0 mm with milled manual drive head
- Multi-level reamer made out of one piece

Application range: For all vehicles with glow plugs of sizes M8 x 1.0



	Ø mm	mm	Length mm	kg
152.1121	M8x1,0	10	195,0	230

3 in 1 glow plug reamer M9 x 1.0

- Special reamer geometry cleans the glow plug shaft, sealing seat and glow rod channel in a single step
- For professional cleaning of glow plug channels in the cylinder head of sizes M9 x 1.0
- Removes deposits between the glow plugs and cylinder head
- Damage due to deep penetration and slipping of the reamer is prevented by fixable stoppers
- Includes a centring sleeve with thread of the corresponding glow plug
- Prior to fitting new glow plugs it is recommended to clean the glow plug shafts
- Universal usage
- External hexagon drive 17.0 mm with milled manual drive head
- Multi-level reamer made out of one piece

Application range: For all vehicles with glow plugs of sizes M9 x 1.0



	Ø mm	mm	Length mm	kg
152.1122	M9x1,0	17	200,0	230

3 in 1 glow plug reamer M10 x 1.0

- Special reamer geometry cleans the glow plug shaft, sealing seat and glow rod channel in a single step
- For professional cleaning of glow plug channels in the cylinder head of sizes M10 x 1.0
- Removes deposits between the glow plugs and cylinder head
- Damage due to deep penetration and slipping of the reamer is prevented by fixable stoppers
- Includes a centring sleeve with thread of the corresponding glow plug
- Prior to fitting new glow plugs it is recommended to clean the glow plug shafts
- Universal usage
- External hexagon drive 17.0 mm with milled manual drive head
- Multi-level reamer made out of one piece

Application range: For all vehicles with glow plugs of sizes M10 x 1.0



	Ø mm	mm	Length mm	kg
152.1123	M10x1,0	17	200,0	230

3 in 1 glow plug reamer M10 x 1.25

- Special reamer geometry cleans the glow plug shaft, sealing seat and glow rod channel in a single step
- For professional cleaning of glow plug channels in the cylinder head of sizes M10 x 1.25
- Removes deposits between the glow plugs and cylinder head
- Damage due to deep penetration and slipping of the reamer is prevented by fixable stoppers
- Includes a centring sleeve with thread of the corresponding glow plug
- Prior to fitting new glow plugs it is recommended to clean the glow plug shafts
- Universal usage
- External hexagon drive 17.0 mm with milled manual drive head
- Multi-level reamer made out of one piece

Application range: For all vehicles with glow plugs of sizes M10 x 1.25



Part No.	Thread	Hex Drive (mm)	Length (mm)	Weight (kg)
152.1124	M10x1,25	17	200.0	230

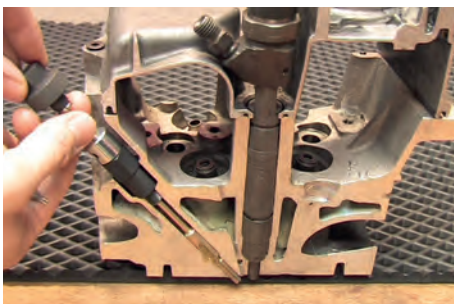
3 in 1 glow plug reamer M12 x 1.25

- Special reamer geometry cleans the glow plug shaft, sealing seat and glow rod channel in a single step
- For professional cleaning of glow plug channels in the cylinder head of sizes M12 x 1.25
- Removes deposits between the glow plugs and cylinder head
- Damage due to deep penetration and slipping of the reamer is prevented by fixable stoppers
- Includes a centring sleeve with thread of the corresponding glow plug
- Prior to fitting new glow plugs it is recommended to clean the glow plug shafts
- Universal usage
- External hexagon drive 17.0 mm with milled manual drive head
- Multi-level reamer made out of one piece

Application range: For all vehicles with glow plugs of sizes M12 x 1.25



Part No.	Thread	Hex Drive (mm)	Length (mm)	Weight (kg)
152.1125	M12x1,25	17	180.0	230



MASTER 3 in 1 glow plug reamer set

- Special reamer geometry cleans the glow plug shaft, sealing seat and glow rod channel in a single step
- For professional cleaning of glow plug channels in the cylinder head of sizes M8 x 1.0, M10 x 1.0, M10 x 1.25 and M12 x 1.25
- Removes deposits between the glow plugs and cylinder head
- Damage due to deep penetration and slipping of the reamer is prevented by fixable stoppers
- Includes a centring sleeve with thread of the corresponding glow plug
- Prior to fitting new glow plugs it is recommended to clean the glow plug shafts
- Universal usage
- For most vehicle types
- External hexagon drive 10.0 or 17.0 mm with milled manual drive head
- Multi-level reamer made out of one piece



Part No.	Quantity	Set Name	Weight (kg)
152.1120	9 pcs	MASTER 3 in 1 glow plug reamer set	1.12

consists of:

Part No.	Description	Weight (kg)
152.1120-01	17 mm adapter M12 x 1.25	50
152.1120-02	17 mm adapter M10 x 1.25	50
152.1120-03	17 mm adapter M10 x 1.0	50
152.1120-04	17 mm adapter M8 x 1.0	18
152.1120-05	Reamer M12	110
152.1120-06	Reamer M10	106
152.1120-07	Reamer M8	103
152.1120-08	Stopper for reamers	20
152.1120-09	Drive head	55

GLOW PLUG DRILL OUT TOOLS

Universal glow plug drill out kit M8 x 1,0

- Universal repair system with innovative principle for dismantled glow plugs
- Simple and user friendly repair method
- Fast and economical solution of the dismantling problems of glow plugs
- Using a special left-cutting 3-blade stepped drill avoids the need to use drilling sleeves compared to other systems
- Optionally upgradeable with standard impact hammers (M10 x 1.5)
- In durable metal case

Application range: Volkswagen, Audi, Seat, Škoda, Mitsubishi, Mercedes, Fiat, Peugeot, Volvo, Ford, Mazda, Citroën, Opel

Application:

1. Shear off centre electrode
2. Drill out with left-cutting stepped drill
3. Cut left thread M6
4. Clean thread gears M8 x 1
5. Clear the remains of the glow plug with impact weight



Part No.	Quantity	Set Name	Weight (kg)
152.1020	8 pcs	Universal glow plug drill out kit M8 x 1,0	800

consists of:

Part No.	Description	Weight (kg)
152.1021	TIN Thread tap, M8 x 1	20
152.1022	Puller left, M6 x 1 x 120 mm	30
152.1023	Thread tap left, M6 x 1, TIN	20
152.1024	Stepped drill left, M5 x 7 x 150 mm	90
152.1026	Extractor for glow plug electrode 3.20 mm	20
152.1032	Extractor for glow plug electrode 4.50 mm	20
152.1027	Extractor for glow plug electrode 6.50 mm	30
152.1037	Removal adapter	62



Universal glow plug drill out kit M9 x 1.0

- Universal repair system with innovative principle for dismantled glow plugs
- Simple and user friendly repair method
- Fast and economical solution of the dismantling problems of glow plugs
- Using a special left-cutting 3-blade stepped drill avoids the need to use drilling sleeves compared to other systems
- Optionally upgradeable with standard impact hammers (M10 x 1.5)
- In durable metal case

Application:

1. Shear off centre electrode
2. Drill out with left-cutting stepped drill
3. Cut left thread M7
4. Clean thread gears M9 x 1.0
5. Clear the remains of the glow plug with impact weight



Part No.	Quantity	Set Name	Weight (kg)
152.1620	8 pcs	Universal glow plug drill out kit M9 x 1.0	900

consists of:

Part No.	Description	Weight (kg)
152.1022	Puller left, M6 x 1 x 120 mm	30
152.1023	Thread tap left, M6 x 1, TIN	20
152.1624	Stepped drill left, M7	240
152.1625	Thread drill M9 x 1.0	20
152.1621	Extractor for glow plug electrode 2.60 mm	30
152.1032	Extractor for glow plug electrode 4.50 mm	20
152.1033	Extractor for glow plug electrode 8.25 mm	30
152.1037	Removal adapter	62

Universal glow plug drill out kit M10 x 1.0

- Universal repair system with innovative principle for dismantled glow plugs
- Simple and user friendly repair method
- Fast and economical solution of the dismantling problems of glow plugs
- Using a special left-cutting 3-blade stepped drill avoids the need to use drilling sleeves compared to other systems
- Customer-oriented solution
- Cylinder head does not need to be removed
- Optionally upgradeable with standard impact hammers (M10 x 1.5)
- In durable metal case

Application range: Volkswagen, Audi, Seat, Škoda, Mitsubishi, Mercedes, Fiat, Peugeot, Volvo, Ford, Mazda, Citroën, Opel

Application:

1. Shear off centre electrode
2. Drill out with left-cutting stepped drill
3. Cut left thread M7
4. Clean thread gears M10 x 1
5. Clear the remains of the glow plug with impact weight



152.1030	8 pcs	Universal glow plug drill out kit M10 x 1.0	900

consists of:

152.1034	Thread tap left, M7, TIN	30
152.1035	Puller left, M7 x 120 mm	40
152.1038	Thread tap M10 x 1	30
152.1036	Stepped drill left, 9 x 180 mm	114
152.1031	Extractor for glow plug electrode 3.50 mm	14
152.1032	Extractor for glow plug electrode 4.50 mm	20
152.1033	Extractor for glow plug electrode 8.25 mm	30
152.1037	Removal adapter	62

Universal glow plug drill out kit M10 x 1.25

- Universal repair system with innovative principle for dismantled glow plugs
- Simple and user friendly repair method
- Fast and economical solution of the dismantling problems of glow plugs
- Using a special left-cutting 3-blade stepped drill avoids the need to use drilling sleeves compared to other systems
- Optionally upgradeable with standard impact hammers (M10 x 1.5)
- In durable metal case

Application:

1. Shear off centre electrode
2. Drill out with left-cutting stepped drill
3. Cut left thread M7
4. Clean thread gears M10 x 1.25
5. Clear the remains of the glow plug with impact weight



152.1610	8 pcs	Universal glow plug drill out kit M10 x 1.25	900

consists of:

152.1615	Thread tap M10 x 1.25	30
152.1035	Puller left, M7 x 120 mm	40
152.1034	Thread tap left, M7, TIN	30
152.1036	Stepped drill left, 9 x 180 mm	114
152.1031	Extractor for glow plug electrode 3.50 mm	14
152.1032	Extractor for glow plug electrode 4.50 mm	20
152.1033	Extractor for glow plug electrode 8.25 mm	30
152.1037	Removal adapter	62

Universal glow plug drill out kit M12 x 1.25

- Universal repair system with innovative principle for dismantled glow plugs
- Simple and user friendly repair method
- Fast and economical solution of the dismantling problems of glow plugs
- Using a special left-cutting 3-blade stepped drill avoids the need to use drilling sleeves compared to other systems
- Optionally upgradeable with standard impact hammers (M10 x 1.5)
- In durable metal case

Application:

1. Shear off centre electrode
2. Drill out with left-cutting stepped drill
3. Cut left thread M7
4. Clean thread gears M12 x 1.25
5. Clear the remains of the glow plug with impact weight



152.1630	8 pcs	Universal glow plug drill out kit M12 x 1.25	900

consists of:

152.1634	Stepped drill left, 10.8 x 180 mm	250
152.1635	Thread tap M12 x 1.25	47
152.1636	Glow plug thread tap left, M8	40
152.1637	Puller left, M8	50
152.1031	Extractor for glow plug electrode 3.50 mm	14
152.1032	Extractor for glow plug electrode 4.50 mm	20
152.1033	Extractor for glow plug electrode 8.25 mm	30
152.1037	Removal adapter	62

Impact weight and guide rod

- With arched contact surface on the handle hook for exact positioning
- Includes impact weight
- Special steel



	Impact weight kg	mm	L mm	kg
152.1040	1.25	M10x1,5	280.0	1.45

GLOW PLUG THREAD CUTTING TOOL

Glow plug thread cutting tool M8 x 1.0

- For cleaning and re-cutting M8 x 1.0 glow plug threads
- Simple handling due to eccentric function
- Special length for deep seated thread
- Quick and low-cost thread repair
- Centring shaft
- With conical mounting shaft for thread repair sleeves
- With external hexagon drive
- With knurled knob



	mm	mm	Length mm	kg
150.6501	M8 x 1,0	13.0	115.0	80

Glow plug thread cutting tool M10 x 1.0

- For cleaning and re-cutting M10 x 1.0 glow plug threads
- Simple handling due to eccentric function
- Special length for deep seated thread
- Quick and low-cost thread repair
- Centring shaft
- With conical mounting shaft for thread repair sleeves
- With external hexagon drive
- With knurled knob



	mm	mm	Length mm	kg
150.6502	M10 x 1,0	13.0	115.0	100

Glow plug thread cutting tool M12 x 1.25

- For cleaning and re-cutting M12 x 1.25 glow plug threads
- Simple handling due to eccentric function
- Special length for deep seated thread
- Quick and low-cost thread repair
- Centring shaft
- With conical mounting shaft for thread repair sleeves
- With external hexagon drive
- With knurled knob



	mm	mm	Length mm	kg
150.6503	M12 x 1,25	13.0	140.0	120
150.6504	M12 x 1,25	13.0	270.0	280

Glow plug thread cutting tool M14 x 1.25

- For cleaning and re-cutting M14 x 1.25 glow plug threads
- Simple handling due to eccentric function
- Special length for deep seated thread
- Quick and low-cost thread repair
- Centring shaft
- With conical mounting shaft for thread repair sleeves
- With external hexagon drive
- With knurled knob



Part No.	Thread	Length mm	Overall Length mm	Weight g
150.6505	M14 x 1,25	13.0	140.0	120

Glow plug and spark plug thread cutting tool set

- For cleaning and re-cutting M12 x 1.25 spark plug or glow plug threads
- Simple handling due to eccentric function
- Special length for deep seated thread
- Quick and low-cost thread repair
- Centring shaft
- With conical mounting shaft for thread repair sleeves
- With external hexagon drive
- With knurled knob
- In durable plastic storage case

Application range: BMW, Mini, Citroën, Peugeot, Renault, Mercedes, Volkswagen, etc.



Part No.	Quantity	Description	Weight g
150.6500	7 pcs	Glow plug and spark plug thread cutting tool set	1.40

consists of:

Part No.	Description	Weight g
150.6501	Thread cutting tool, M8 x 1.0, 115 mm	80
150.6502	Thread cutting tool, M10 x 1.0, 115 mm	100
150.6503	Thread cutting tool, M12 x 1.25, 140 mm	120
150.6504	Thread cutting tool, M12 x 1.25, 270 mm	280
150.6505	Thread cutting tool, M14 x 1.25, 140 mm	120
150.6506	Thread cutting tool, M14 x 1.25, 270 mm	280
150.6507	Thread cutting tool, M18 x 1.5, 90 mm	100

GLOW PLUG THREAD REPAIR

THREADfix repair set M8 x 1.0 for glow plugs

- Unique assortment for the repair of worn or damaged threads
- Ideal for glow plugs
- Simple handling and correct repair
- Provides an entirely firm and gastight seat of the inserts
- Extremely thin walled inserts with rustproofing protection
- Includes thread tap and assembly tool
- Fast repair option without costly warehousing of components
- In durable plastic storage case

M8 x 1.0 x 110 mm



Part No.	Quantity	Description	Weight g
150.5020	9 pcs	THREADfix repair set M8 x 1.0 for glow plugs	300

consists of:

Part No.	Description	Weight g
150.5021	Threaded drill with guide pin M 8x 1,0	18
150.5022	Threaded drill with guide pin M10 x 1,0	21
150.5023	Reamer with guide pin	19
150.5024	Screw for Bushes L= 90 mm, M8 x 1,0, GL= 106 mm	124
150.5026	Threaded bush with collar L=11 mm, IG= M8x1,0 / AG=M10x1,0 (5 per Pack)	20

THREADfix repair set M9 x 1.0 for glow plugs

- Unique assortment for the repair of worn or damaged threads
- Ideal for glow plugs
- Simple handling and correct repair
- Provides an entirely firm and gastight seat of the inserts
- Extremely thin walled inserts with rustproofing protection
- Includes thread tap and assembly tool
- Fast repair option without costly warehousing of components
- In durable plastic storage case

M9 x 1.0 x 115 mm



Part No.	Quantity	Description	Weight g
150.5030	9 pcs	THREADfix repair set M9 x 1.0 for glow plugs	380

consists of:

Part No.	Description	Weight g
150.5031	Threaded drill with guide pin M9 x 1,0	19
150.5032	Threaded drill with guide pin M11 x 1,0	24
150.5033	Reamer with guide pin	24
150.5034	Screw for Bushes L=93 mm, M9 x 1,0; GL= 109 mm	180
150.5036	Threaded bush with collar L=11 mm, IG= M9x1,0 / AG=M11x1,0 (5 per Pack)	20

THREADfix repair set M10 x 1.0 for glow plugs

- Unique assortment for the repair of worn or damaged threads
- Ideal for glow plugs
- Simple handling and correct repair
- Provides an entirely firm and gastight seat of the inserts
- Extremely thin walled inserts with rustproofing protection
- Includes thread tap and assembly tool
- Fast repair option without costly warehousing of components
- In durable plastic storage case

M10 x 1.0 x 120 mm
M10 x 1.0 x 128 mm



Part No.	Quantity	Description	Weight g
150.5040	15 pcs	THREADfix repair set M10 x 1.0 for glow plugs	810

consists of:

Part No.	Description	Weight g
150.5041	Threaded drill with guide pin M10 x 1,0	26
150.5042	Threaded drill with guide pin M12 x 1,0	30
150.5043	Reamer with guide pin	29
150.5044	Screw for Bushes (S) L= 85 mm, M10 x 1,0, GL= 103 mm	175
150.5047	Screw for Bushes L= 91 mm, M10 x 1,0, GL= 109 mm	180
150.5048	Threaded bush with collar L=12 mm, IG= M10x1,0 / AG=M12x1,0 (5 per Pack)	20
150.5049	Threaded bush with collar L=19 mm, IG= M10x1,0 / AG=M12x1,0 (5 per Pack)	20

THREADfix repair set M10 x 1.25 for glow plugs

- Unique assortment for the repair of worn or damaged threads
- Ideal for glow plugs
- Simple handling and correct repair
- Provides an entirely firm and gastight seat of the inserts
- Extremely thin walled inserts with rustproofing protection
- Includes thread tap and assembly tool
- Fast repair option without costly warehousing of components
- In durable plastic storage case

M10 x 1.25 x 125 mm



Part No.	Quantity	Description	Weight g
150.5050	9 pcs	THREADfix repair set M10 x 1.25 for glow plugs	630

consists of:

Part No.	Description	Weight g
150.5051	Threaded drill with guide pin M10 x 1.25	24
150.5052	Threaded drill with guide pin M12 x 1.25	25
150.5053	Reamer with guide pin	25
150.5054	Screw for Bushes L= 84 mm, M10 x 1.25, GL= 107 mm	183
150.5056	Threaded bush with collar L=17 mm, IG= M10x1,25 / AG=M12x1,0 (5 per Pack)	20

THREADfix repair set M12 x 1.25 for glow and spark plugs

- Unique assortment for the repair of worn or damaged threads
- Ideal for spark plugs and glow plugs
- Simple handling and correct repair
- Provides an entirely firm and gastight seat of the inserts
- Extremely thin walled inserts with rustproofing protection
- Includes thread tap and assembly tool
- Fast repair option without costly warehousing of components
- In durable plastic storage case

M12 x 1.25 x 120 mm
M12 x 1.25 x 130 mm
M12 x 1.25 x 150 mm



150.5060	21 pcs	THREADfix repair set M12 x 1.25 for glow and spark plugs	920
----------	--------	----------------------------------------------------------	-----

consists of:

150.5061	Threaded drill with guide pin M12 x 1.25	47
150.5062	Threaded drill with guide pin M14 x 1.25	53
150.5063	Reamer for guide pin	52
150.5064	Screw for Bushes (S) L= 89 mm, M12 x 1.5, GL= 108 mm	230
150.5068	Screw for Bushes (M) L= 95 mm, M12 x 1.25, GL= 114 mm	238
150.5069	Screw for Bushes (L) L= 103 mm, M12 x 1.25, GL= 122 mm	246
150.5077	Threaded bush with collar L=12 mm, IG=M12x1,25 / AG=M14x1,25 (5 per Pack)	20
150.5078	Threaded bush with collar L=19 mm, IG=M12x1,25 / AG=M14x1,25 (5 per Pack)	20
150.5079	Threaded bush with collar L=26 mm, IG=M12x1,25 / AG=M14x1,25 (5 per Pack)	20

Stainless steel repair set M8 x 1,00 for glow plugs

- Unique assortment for the repair of worn or damaged threads
- Ideal for glow plugs
- Simple handling and correct repair
- Provides an entirely firm and gastight seat of the inserts
- Extremely thin walled inserts made from stainless steel
- Includes thread tap and assembly tool
- Fast repair option without costly warehousing of components
- In durable steel storage case



150.6030	24 pcs	Stainless steel repair set M8 x 1,00 for glow plugs	268
----------	--------	-----------------------------------------------------	-----

consists of:

150.6031	Thread insert set M8 x 1,0, VPE 10 pcs., L=11 mm	120
150.6032	Twist drill for M8, Ø 8.3 mm	34
150.6033	Threaded tap M8 x 1,0	36
150.6034	Mounting tool for M8	48
150.6025	Cone mill M6 - M8	16

Stainless steel repair set M10 x 1.0 for glow plugs

- Unique assortment for the repair of worn or damaged threads
- Ideal for glow plugs
- Simple handling and correct repair
- Provides an entirely firm and gastight seat of the inserts
- Extremely thin walled inserts made from stainless steel
- Includes thread tap and assembly tool
- Fast repair option without costly warehousing of components
- In durable steel storage case



150.6060	19 pcs	Stainless steel repair set M10 x 1.0 for glow plugs	318
----------	--------	-----------------------------------------------------	-----

consists of:

150.6061	Thread insert set, 150.6060,5pcs,M10x1.0	47
150.6062	Twist drill, M10, Ø 10.3mm	58
150.6063	Threaded tap f.150.6060, M10x1.0	33
150.6064	Mounting tool f.150.6060, M10	62
150.6065	Insertion pin breaker f.150.6060, M10	26

Stainless steel repair set M10 x 1.25 for glow plugs

- Unique assortment for the repair of worn or damaged threads
- Ideal for glow plugs
- Simple handling and correct repair
- Provides an entirely firm and gastight seat of the inserts
- Extremely thin walled inserts made from stainless steel
- Includes thread tap and assembly tool
- Fast repair option without costly warehousing of components
- In durable steel storage case



150.6070	19 pcs	Stainless steel repair set M10 x 1.25 for glow plugs	328
----------	--------	------------------------------------------------------	-----

consists of:

150.6071	Thread insert set M10 x 1.25, VPE 5 pcs., L=13,8 mm	62
150.6062	Twist drill for M10, Ø 10,3 mm	58
150.6073	Threaded tap M10 x 1.25	33
150.6064	Mounting tool for M10	62
150.6065	Cone mill M10	26

Stainless steel repair set M12 x 1.25 for glow plugs

- Unique assortment for the repair of worn or damaged threads
- Ideal for glow plugs and spark plugs
- Simple handling and correct repair
- Provides an entirely firm and gastight seat of the inserts
- Extremely thin walled inserts made from stainless steel
- Includes thread tap and assembly tool
- Fast repair option without costly warehousing of components
- In durable steel storage case



150.6110	14 pcs	Stainless steel repair set M12 x 1.25 for glow plugs	453
----------	--------	------------------------------------------------------	-----

consists of:

150.6111	Thread insert set f.150.6110, 5pcs	85
150.6102	Twist drill, M12, Ø 12.3mm	84
150.6113	Threaded tap f.150.6110, M12x1.25	67
150.6104	Mounting tool f.150.6100, M12	104
150.6105	Insertion pin breaker f.150.6100, M12	46

Stainless steel repair set M5 - M12 for glow plugs

- Unique assortment for the repair of worn or damaged threads
- Ideal for glow plugs and spark plugs
- Simple handling and correct repair
- Provides an entirely firm and gastight seat of the inserts
- Extremely thin walled inserts made from stainless steel
- Includes thread tap and assembly tool
- Fast repair option without costly warehousing of components
- In durable steel storage case



150.6150	130 pcs	Stainless steel repair set M5 - M12 for glow plugs	2.05
----------	---------	----------------------------------------------------	------

consists of:

150.6001	Thread insert set f.150.6000, 10pcs	14
150.6002	Twist drill, M5, Ø 5.2mm	9
150.6003	Threaded tap f.150.6000, M5x0.8	12
150.6004	Mounting tool f.150.6000, M5	20

consists of:

150.6005	Insertion pin breaker f.150.6000, M5	9
150.6011	Thread insert set f.150.6010, 10pcs	17
150.6012	Twist drill, M6, Ø 6.3mm	17
150.6013	Threaded tap f.150.6010, M6x1.0	21
150.6014	Mounting tool f.150.6010, M6	24
150.6015	Insertion pin breaker f.150.6010, M6	10
150.6025	Insertion pin breaker f.150.6020, M7	16
150.6032	Twist drill, M8, Ø 8.3mm	34
150.6034	Mounting tool f.150.6030, M8	48
150.6041	Thread insert set f.150.6040, 10pcs	26
150.6043	Threaded tap f.150.6040, M8x1.25	36
150.6064	Mounting tool f.150.6060, M10	62
150.6065	Insertion pin breaker f.150.6060, M10	26
150.6081	Thread insert set f.150.6080, 5pcs	24
150.6082	Twist drill, M10, Ø 10.4mm	61
150.6083	Threaded tap f.150.6080, M10x1.5	41
150.6104	Mounting tool f.150.6100, M12	104
150.6105	Insertion pin breaker f.150.6100, M12	46
150.6122	Twist drill, M12, Ø 12.4mm	88
150.6123	Threaded tap f.150.6120, M12x1.5	67
150.6131	Thread insert set f.150.6130, 5pcs	33

Stainless steel thread repair set M6 - M10

- Assortment of for repairing thread damaged or worn threads indispensably use for Materials with sight stability e.g. aluminum alloy or magnesium alloy
- Ideally for the mechanical engineering, vehicle technology, electro and medical technology
- Resistant to corrosion effects and temperature resistant thread uses
- Includes threaded tap and assembly tool
- Fast repair possibility without costly replacement of bearing housings and components
- Special stainless steel
- In durable steel storage case



150.6155	87 pcs Stainless steel thread repair set M6 - M10	1.53

consists of:

150.6011	Thread insert set f.150.6010, 10pcs	17
150.6012	Twist drill, M6, Ø 6.3mm	17
150.6013	Threaded tap f.150.6010, M6x1.0	21
150.6014	Mounting tool f.150.6010, M6	24
150.6015	Insertion pin breaker f.150.6010, M6	10
150.6025	Insertion pin breaker f.150.6020, M7	16
150.6032	Twist drill, M8, Ø 8.3mm	34
150.6034	Mounting tool f.150.6030, M8	48
150.6041	Thread insert set f.150.6040, 10pcs	26
150.6043	Threaded tap f.150.6040, M8x1.25	36
150.6064	Mounting tool f.150.6060, M10	62
150.6065	Insertion pin breaker f.150.6060, M10	26
150.6081	Thread insert set f.150.6080, 5pcs	24
150.6082	Twist drill, M10, Ø 10.4mm	61
150.6083	Threaded tap f.150.6080, M10x1.5	41

Stainless steel thread repair set M6 - M14

- Assortment of for repairing thread damaged or worn threads indispensably use for Materials with sight stability e.g. aluminum alloy or magnesium alloy
- Ideally for the mechanical engineering, vehicle technology, electro and medical technology
- Resistant to corrosion effects and temperature resistant thread uses
- Includes threaded tap and assembly tool
- Fast repair possibility without costly replacement of bearing housings and components
- Special stainless steel
- In durable steel storage case



150.6160	113 pcs Stainless steel thread repair set M6 - M14		2.52

consists of:

150.6011	Thread insert set f.150.6010, 10pcs	17
150.6012	Twist drill, M6, Ø 6.3mm	17
150.6013	Threaded tap f.150.6010, M6x1.0	21
150.6014	Mounting tool f.150.6010, M6	24
150.6015	Insertion pin breaker f.150.6010, M6	10
150.6025	Insertion pin breaker f.150.6020, M7	16
150.6032	Twist drill, M8, Ø 8.3mm	34
150.6034	Mounting tool f.150.6030, M8	48
150.6041	Thread insert set f.150.6040, 10pcs	26
150.6043	Threaded tap f.150.6040, M8x1.25	36
150.6064	Mounting tool f.150.6060, M10	62
150.6065	Insertion pin breaker f.150.6060, M10	26
150.6081	Thread insert set f.150.6080, 5pcs	24
150.6082	Twist drill, M10, Ø 10.4mm	61
150.6083	Threaded tap f.150.6080, M10x1.5	41
150.6104	Mounting tool f.150.6100, M12	104
150.6105	Insertion pin breaker f.150.6100, M12	46
150.6122	Twist drill, M12, Ø 12.4mm	88
150.6131	Thread insert set f.150.6130, 5pcs	33
150.6133	Threaded tap f.150.6130, M12x1.75	68
150.6141	Thread insert set f.150.6140, 5pcs	16
150.6142	Thread insert set f.150.6140, 5pcs	12
150.6143	Thread insert set f.150.6140, 5pcs	7
150.6144	Threaded tap f.150.6140, M14x1,25	72
150.6145	Mounting tool f.150.6140, M14x1,25	80

THREAD GAUGES

Thread gauge

- For controlling and increasing the interior thread and outside thread
- Imperial sizes
- Cylindrical tapered
- Leaves fan shaped arrangement
- Leaves individually marked with size
- Out of hardened spring steel



	Tooth pitch	Measuring range	B mm	L mm	
301.0090	22	4-4,5-5-6-7-8-9-10-11-12-13-14-16-18-20-22-24-32-40-48-56-64mm	12,2	66,5	40

Thread gauge

- For controlling and increasing the interior thread and outside thread
- Metric sizes
- Cylindrical tapered
- Leaves fan shaped arrangement
- Leaves individually marked with size
- Out of hardened spring steel



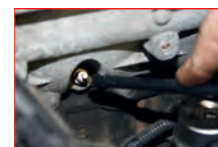
	Tooth pitch	Measuring range	B mm	L mm	
301.0095	20	0,40-0,45-0,50-0,60-0,70-0,75-0,80-1,00-1,25-1,50-1,75-2,00-2,50-3,00-3,50-4,00-4,50-5,00-5,50-6,00mm	12,2	66,5	40

TEST DEVICE

Glow plug tester

- Quick identification of defective glow plugs independent of the voltage
- Testing is carried out when installed, no need to remove the glow plugs
- For 12.0 V glow plugs in diesel engines
- With integrated LED display for the state of the glow plugs
- Automatic switch off
- Voltage supply from 12.0 V starter battery on the vehicle
- 1280.0 mm cable length with crocodile clips
- 300.0 mm cable length with test probe
- In a practical storage case

Application range: All vehicles with diesel engines with 12.0 V glow plugs



	Length mm	Width mm	Height mm	
550.1401	135.0	80.0	35.0	340





THE ACCUMULATED PULLER EXPERTISE

MADE IN
GERMANY

FROM
SMALL
TO
LARGE



K15

**OVER 1,000 PULLER VARIANTS UP TO 50 T
FOR PARTS WITH A DIAMETER OF 5-1000 MM**

