

K15



KS TOOLS



SPRINGS / SHOCK ABSORBERS



Innovation is
our mission!



	PAGE
RELEASE TOOLS	482 - 485
SPLAY TOOLS	485
SUPPORT DEVICES	486
CAMBER ADJUSTMENT TOOLS	486 - 487
SPRING FEET BRACKET	487
MCPHERSON SPRING COMPRESSOR	487 - 489
INTERNAL SPRING COMPRESSOR	490
STATIONARY SPRING COMPRESSOR	490

RELEASE TOOLS

Shock absorber external hexagonal counter holder socket

- 6-point
- Ideal for the assembly and disassembly of the rear shock absorber
- For correct and damage-free use please pay attention to manufacturer's torque values
- With open window
- Internal square drive to DIN 3120 / ISO 1174 with ball reception
- Phosphate
- Chrome vanadium



1/2"	mm	L mm	Suitable for	g
150.9493	22,0	90,0	Audi, VW	206

Shock absorber external bihexagonal counter holder socket

- 12-point
- Ideal for the assembly and disassembly of the rear shock absorber
- For correct and damage-free use please pay attention to manufacturer's torque values
- With open window
- Internal square drive to DIN 3120 / ISO 1174 with ball reception
- Phosphate
- Chrome molybdenum



1/2"	mm	L mm	Suitable for	g
150.9541	21,0	90,0	VW Golf II, Golf III, Jetta, Vento, Passat	300

Shock absorber hexagon socket counter holder angled screwdriver

- Hexagon socket
- Ideal for counter holding front shock absorber piston rods during assembly and disassembly
- For correct and damage-free use
- For repair work in the spring area (shock absorber, spring strut, coil springs, etc.)
- Angled design
- With milled metal handle
- Matt finish
- Chrome vanadium



150.9494	mm	L mm	g
150.9494	7,0	150,0	100

Shock absorber external hexagonal counter holder socket

- 6-point
- Ideal for counter holding shock absorber piston rods during assembly and disassembly
- For correct and damage-free use please pay attention to manufacturer's torque values
- For repair work in the spring area (shock absorber, spring strut, coil springs, etc.)
- Internal square drive to DIN 3120 / ISO 1174 with ball reception
- External drive hexagonal socket 21.0 mm
- Matt finish
- Chrome vanadium



1/2"	mm	L mm	Suitable for	g
150.9414	14,0	82,5	Honda, Nissan	130
150.9416	16,0	82,5	VW, Audi, Seat, Fiat	140
150.9417	17,0	82,5	Ford, VW, Audi, Seat, Fiat	140
150.9418	18,0	82,5	Ford, VW, Audi, Seat, Fiat, Rover, Opel, Peugeot, Renault, Japanese vehicles	180
150.9419	19,0	82,5	VW, Audi, Seat, Citroën, Fiat, Opel, Peugeot, Toyota	180
150.9421	21,0	82,5	Mercedes, Chrysler, VW, Audi, Ford, japanische Fahrzeuge	200
150.9422	22,0	82,5	VW, Audi, Seat, Fiat, Citroën, Opel, Peugeot, Renault, BMW	220
150.9424	24,0	82,5	Volvo	250
150.9427	27,0	82,5	VW, Audi, Citroën, Peugeot	320

Special shock absorber counter holder wrench

- Special profile
- Ideal for counter holding rear shock absorber piston rods during assembly and disassembly
- Thanks to the perfect fit on the shock absorber piston it is almost impossible to slide over
- For correct and damage-free use
- For repair work in the spring area (shock absorber, spring strut, coil springs, etc.)
- Special steel



150.9476	mm	L mm	Suitable for	g
150.9476	5,2x8,0x6,3x9	175,0	VW, Audi, Ford, Opel, Honda	182



Universal shock absorber counter holder bit socket

- 10.0 bit holder for all bits on the market
- Ideal for counter holding the shock absorber piston rods whilst at the same time releasing of tightening the piston rod nuts
- For correct and damage-free use please pay attention to manufacturer's torque values
- For repair work in the spring area (shock absorber, spring strut, coil springs, etc.)
- External drive hexagonal socket 10.0 mm
- Sand blasted
- Chrome vanadium



10 mm	mm	L mm	Suitable for	g
150.9460	10,0	92,5	universal	100

Shock absorber special profile counter holder bit socket

- Special profile
- Ideal for counter holding the shock absorber piston rods whilst at the same time releasing of tightening the piston rod nuts
- For correct and damage-free use please pay attention to manufacturer's torque values
- For repair work in the spring area (shock absorber, spring strut, coil springs, etc.)
- External drive hexagonal socket 10.0 mm
- Sand blasted
- Chrome vanadium



10 mm	mm	L mm	Suitable for	g
150.9434	4,0x7,0	92,5	Nissan	90
150.9435	5,2x8,0	92,5	VW, Audi, Nissan	90
150.9436	6,0x9,0	92,5	VW, Audi, Renault	100
150.9437	6,3x9,0	92,5	Nissan	100
150.9438	7,0x10,0	92,5	VW, Audi, Seat, Fiat	100
150.9439	8,0x11,0	92,5	Seat, Fiat	100
150.9440	9,0x12,0	92,5	Japanese vehicles	110
150.9441	10,0x13,0	92,5	Seat, Fiat, Volvo	110
150.9442	12,0x15,0	92,5	Seat, Fiat	110

Shock absorber half-crescent counter holder bit socket

- Half-crescent profile
- Ideal for counter holding the shock absorber piston rods whilst at the same time releasing of tightening the piston rod nuts
- For correct and damage-free use please pay attention to manufacturer's torque values
- For repair work in the spring area (shock absorber, spring strut, coil springs, etc.)
- External drive hexagonal socket 10.0 mm
- Sand blasted
- Chrome vanadium



10 mm	mm	L mm	Suitable for	g
150.9445	5,0x6,0	92,5	Nissan	90
150.9450	10,0x12,0	92,5	VW, Audi, Nissan	110

Shock absorber external hexagon counter holder bit socket

- 6-point
- Ideal for counter holding the shock absorber piston rods whilst at the same time releasing of tightening the piston rod nuts
- For correct and damage-free use please pay attention to manufacturer's torque values
- For repair work in the spring area (shock absorber, spring strut, coil springs, etc.)
- External drive hexagonal socket 10.0 mm
- Sand blasted
- Chrome vanadium



10 mm	mm	L mm	Suitable for	
			mm	g
150.9458	8,0	92.5	Mercedes	90
150.9459	9,0	92.5	Opel, Chrysler	90
150.9460	10,0	92.5	Chrysler, Ford	100
150.9461	11,0	92.5	Japanese vehicles	100

Shock absorber Internal hexagon counter holder bit socket

- Hexagon socket
- Ideal for counter holding the shock absorber piston rods whilst at the same time releasing of tightening the piston rod nuts
- For correct and damage-free use please pay attention to manufacturer's torque values
- For repair work in the spring area (shock absorber, spring strut, coil springs, etc.)
- External drive hexagonal socket 10.0 mm
- Sand blasted
- Chrome vanadium



10 mm	mm	L mm	Suitable for	
			mm	g
150.9465	5,0	92.5	Honda	100
150.9466	6,0	92.5	Seat, Fiat, Citroën, Peugeot, Ford, Opel, Renault, BMW, japanische Fahrzeuge	100
150.9467	7,0	92.5	VW, Audi, Seat, Fiat, Citroën, Peugeot, Mercedes, Renault	100
150.9468	8,0	92.5	Mercedes	100

Shock absorber slotted counter holder bit socket

- Slotted
- Ideal for counter holding the shock absorber piston rods whilst at the same time releasing of tightening the piston rod nuts
- For correct and damage-free use please pay attention to manufacturer's torque values
- For repair work in the spring area (shock absorber, spring strut, coil springs, etc.)
- External drive hexagonal socket 10.0 mm
- Sand blasted
- Chrome vanadium



10 mm	mm	L mm	Suitable for	
			mm	g
150.9473	3,0x10,0	92.5	Mercedes, Opel, Renault	80
150.9474	3,5x10,0	92.5	Chrysler, Ford, Citroën, Peugeot	80
150.9475	4,0x10,0	92.5	Citroën, Peugeot	80

Shock absorber spline (XZN®) counter holder bit socket

- Spline
- Ideal for counter holding the shock absorber piston rods whilst at the same time releasing of tightening the piston rod nuts
- For correct and damage-free use please pay attention to manufacturer's torque values
- For repair work in the spring area (shock absorber, spring strut, coil springs, etc.)
- External drive hexagonal socket 10.0 mm
- Sand blasted
- Chrome vanadium



10 mm	D	L mm	Suitable for	
			mm	g
150.9481	M12	100,0	Opel	100

Shock absorber TX counter holder bit socket

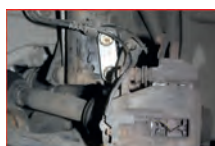
- TX
- Ideal for counter holding the shock absorber piston rods whilst at the same time releasing of tightening the piston rod nuts
- For correct and damage-free use please pay attention to manufacturer's torque values
- For repair work in the spring area (shock absorber, spring strut, coil springs, etc.)
- External drive hexagonal socket 10.0 mm
- Sand blasted
- Chrome vanadium



10 mm	L mm	Suitable for		
		mm	g	
150.9542	T40	92.5	VW, Porsche	100
150.9482	T50	92.5	Ford, Nissan	100
150.9483	T60	92.5	Ford	100

Special shock absorber counter holder wrench for screwing in spring foot connections of the Mercedes A class

- 12-point
- Ideal for counter holding the lower shock absorber spring foot connections during assembly and disassembly
- For correct and damage-free use
- For repair work in the spring area (shock absorber, spring strut, coil springs, etc.)
- Particularly useful for measurement and adjusting work
- Matt finish
- Chrome vanadium



10 mm	mm	L mm	Suitable for	
			mm	g
150.3021	21,0	90,0	Mercedes A class type 169 (>2004)	120

Shock cone type key for Mercedes Benz

- Ideal for the easy release of slotted nuts on the shock absorber piston rod
- Suitable for counter holding the upper shock absorber fixing screws
- Perfect fit for secure hold
- Recess in the wrench head for access via the piston rod
- Correct assembly and disassembly
- Wrench head with 3 studs Ø 8 mm
- With 2 component handle



10 mm	L mm	Suitable for	
		mm	g
150.9485	240,0	Mercedes E class W211 T model	200

Special shock absorber release tool for Mercedes V classes

- Ideal tool for the assembly and disassembly of shock absorbers on V class vehicles
- Extra long
- Internal square drive to DIN 3120 / ISO 1174 for counter holding the piston rod
- With 21 mm operation for opening the cap nut
- 7 mm internal square for securing the piston rod
- External drive hexagonal socket 18.0 mm
- Simple handling
- Matt finish
- Chrome vanadium

Application range: Mercedes Type 639 (Viano and Vito)



10 mm	mm	mm	L mm	Suitable for	
				mm	g
150.3097	18,0	7,0	280,0	Mercedes V classes	420

Shock absorber piston rod line wrench

- Ideally suited for assembling springs, since the piston rod of the shock absorber can be held in the correct position
- Makes the installation of the spring easier
- For correct and damage-free use
- For repair work in the spring area (shock absorber, spring strut, coil springs, etc.)
- With t-handle
- Special steel



10 mm	mm	L mm	Suitable for	
			mm	g
150.9451	M10x1	280,0	Renault	420
150.9452	M10x1,5	280,0	BMW	420
150.9453	M12x1,25	280,0	BMW	420
150.9454	M12x1,5	280,0	Audi	420
150.9455	M14x1,5	280,0	Audi, Opel, VW	420
150.9456	M15x1,5	280,0	GM, Opel	420

Special slotted nut wrench

- Ideal for the easy release of slotted nuts on the shock absorber piston rod of the rear axle
- Perfect fit for secure hold
- Correct assembly and disassembly
- With two pins
- External drive hexagonal socket 22.0 mm
- Chrome vanadium



	mm	Suitable for	
150.9401	10,5x3,5	VW rear axle	60
150.9402	12,5x3,5	VW front axle	50
150.9403	14,5x5,0	Audi 80, Seat, Škoda, VW Polo, Golf, Passat	50
150.9404	14,5x3,0	Austin Maestro	50
150.9405	14,0x2,5	Mercedes C class W203, CLK W209	60

Special slotted nut wrench set for VAG

- Especially for Audi and Volkswagen
- Ideal for the easy release of slotted nuts on the shock absorber piston rod
- Perfectly sized for a secure fit
- Correct assembly and disassembly
- With two pins
- External drive hexagonal socket 22.0 mm
- Chrome vanadium

Application range: Audi, Seat, Škoda, Volkswagen etc.



150.9410	3 pcs	Special slotted nut wrench set for VAG	170

consists of:

150.9401	Slotted nut wrench, 10.5 mm, Volkswagen		60
150.9402	Slotted nut wrench, 12.5 mm, Volkswagen		50
150.9403	Slotted nut wrench, 14.5 mm, VAG		50



Special shock absorber assembly help set for shock absorbers with rebound buffer springs

- For assembly and disassembly of shock absorbers with rebound buffer springs
- Simply remove the entire rebound buffer spring and align securely
- Simple handling
- One-man operation
- Minimum time needed
- Significantly reduces risks when changing springs or shock absorbers
- In durable plastic storage case

Application range: BMW, Mercedes, Toyota, Nissan, Fiat, Peugeot, Ford etc.



150.9495	5 pcs	Special shock absorber assembly help set for shock absorbers with rebound buffer springs	2.85

consists of:

150.9496	Telescopic tube to 150.9495		655
150.9497	Intermediate bearings to 150.9495		1288
150.9498	Uni-clamp to 150.9495, incl. small screws		126
150.9499	Screw for Uni-clamp, long		55
151.8135	ERGOTORQUEplus T-handle internal hexagon wrench, 6 mm		140

Universal shock absorber tool set

- For repair work in the spring area (shock absorber, spring strut, coil springs, etc.)
- Suitable for all common vehicles
- For counter holding the piston rod and at the same time releasing the securing nuts on the piston rod
- For exact torque tightening of the shock absorber piston rods
- Chrome vanadium
- In durable plastic storage case



150.9430	18 pcs	Universal shock absorber tool set	2.73

consists of:

150.9416	1/2" Shock absorber external hexagonal counter holder socket 16mm		140
150.9417	1/2" Shock absorber external hexagonal counter holder socket 17mm		140
150.9418	1/2" Shock absorber external hexagonal counter holder socket 18mm		180
150.9419	1/2" Shock absorber external hexagonal counter holder socket 19mm		180
150.9421	1/2" Shock absorber external hexagonal counter holder socket 21mm		200
150.9422	1/2" Shock absorber external hexagonal counter holder socket 22mm		220
150.9435	10mm Shock absorber special profile counter holder bit socket, 5,2x8mm		90
150.9436	10mm Shock absorber special profile counter holder bit socket, 6x9mm		100
150.9438	10mm Shock absorber special profile counter holder bit socket, 7x10mm		100
150.9466	10mm Shock absorber bit, 6mm var.Europe		100
150.9467	10mm Shock absorber bit ,7mm var.Europe		100
150.9468	10mm Shock absorber bit, 8mm Mercedes		100
150.9481	10mm Shock absorber bit spline M12 Opel		100
150.9482	10mm Shock absorber bit, TX T50 Ford		100
150.9483	10mm Shock absorber bit, TX T60 Nissan, Ford		100
503.4210	GEARplus Combination spanner, 10mm		50
503.4219	GEARplus Combination spanner, 19mm		240
503.4222	GEARplus Combination spanner, 22mm		345

MASTER shock absorber tool set

- For repair work in the spring area (shock absorber, spring strut, coil springs, etc.)
- Suitable for all common vehicles
- For counter holding the piston rod and at the same time releasing the securing nuts on the piston rod
- For exact torque tightening of the shock absorber piston rods
- Chrome vanadium
- In durable plastic storage case




150.9400	39 pcs	MASTER shock absorber tool set	6.30

consists of:

150.9401	Strut entrainer socket, 10.5mm, VW		60
150.9402	Strut entrainer socket, 12.5mm, VW		50
150.9403	Strut entrainer socket, 14.5mm, VAG		50
150.9404	Strut entrainer socket, 14.5mm, Austin		50
150.9405	Strut entrainer socket, 14mm, Mercedes W203		60
150.9414	1/2" Shock absorber external hexagonal counter holder socket 14mm		130
150.9416	1/2" Shock absorber external hexagonal counter holder socket 16mm		140

consists of:

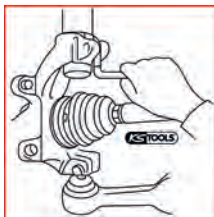
			
150.9417	1/2" Shock absorber external hexagonal counter holder socket 17mm	140	
150.9418	1/2" Shock absorber external hexagonal counter holder socket 18mm	180	
150.9419	1/2" Shock absorber external hexagonal counter holder socket 19mm	180	
150.9421	1/2" Shock absorber external hexagonal counter holder socket 21mm	200	
150.9422	1/2" Shock absorber external hexagonal counter holder socket 22mm	220	
150.9424	1/2" Shock absorber external hexagonal counter holder socket 24mm	250	
150.9427	1/2" Shock absorber external hexagonal counter holder socket 27mm	320	
150.9434	10mm Shock absorber special profile counter holder bit socket,4x7mm	90	
150.9435	10mm Shock absorber special profile counter holder bit socket,5,2x8mm	90	
150.9436	10mm Shock absorber special profile counter holder bit socket,6x9mm	100	
150.9437	10mm Shock absorber special profile counter holder bit socket,6,3x9mm	100	
150.9438	10mm Shock absorber special profile counter holder bit socket,7x10mm	100	
150.9439	10mm Shock absorber special profile counter holder bit socket,8x11mm	100	
150.9440	10mm Shock absorber special profile counter holder bit socket,9x12mm	110	
150.9441	10mm Shock absorber special profile counter holder bit socket,10x13mm	110	
150.9442	10mm Shock absorber special profile counter holder bit socket,12x15mm	110	
150.9445	10mm Shock absorber half-crescent counter holder bit socket, 5x6mm	90	
150.9450	10mm Shock absorber half-crescent counter holder bit socket, 10x12mm	110	
150.9458	10mm Special shock absorber, 8mm	90	
150.9459	10mm Special shock absorber, 9mm	90	
150.9460	10mm Special shock absorber, 10mm	100	
150.9461	10mm Special shock absorber, 11mm	100	
150.9465	10mm Special shock absorber, 5mm	100	
150.9466	10mm Shock absorber bit, 6mm var.Europe	100	
150.9467	10mm Shock absorber bit ,7mm var.Europe	100	
150.9468	10mm Shock absorber bit, 8mm Mercedes	100	
150.9473	10mm Shock absorber slotted counter holder bit socket, 3x10mm	80	
150.9474	10mm Shock absorber slotted counter holder bit socket, 3,5x10mm	80	
150.9475	10mm Shock absorber slotted counter holder bit socket, 4x10mm	80	
150.9481	10mm Shock absorber bit spline M12 Opel	100	
150.9482	10mm Shock absorber bit,TX T50 Ford	100	
150.9483	10mm Shock absorber bit,TX T60 Nissan,Ford	100	


SPLAY TOOLS

Flange spreader for the spring foot mounting

- Ideal for time-saving and damage-free splaying of the axle joint clamp boreholes or ball joint attachments
- Makes the assembly and disassembly easier
- For almost all common vehicle types
- 90° angled
- Continuous hardened
- Matt chrome
- Special steel

Application range: Ford, VAG, PSA, Japanese vehicles, etc.



	Spread dim mm	Width mm	L mm	
150.9407	7.0	5.0	205.0	65

Flange splayed bit socket set for the spring foot mounting


- Ideal for time-saving and damage-free splaying of the axle joint clamp boreholes or ball joint attachments
- Makes the assembly and disassembly easier
- For almost all common vehicle types
- Continuous hardened
- Matt chrome
- Special steel

Application range: BMW, Ford, VAG, PSA, Japanese vehicles, etc.




1/2"



				
150.9490	2 pcs	Flange splayed bit socket set for the spring foot mounting	120	

consists of:


				
150.9491	1/2" flange splay bit socket, 5.0 x 7.0 mm	60		
150.9492	1/2" flange splay bit socket, 5.5 x 8.2 mm	60		

Ball joint splitter set


- Ideal for splaying the axle joint clamp boreholes, or ball joint attachments
- It is necessary to remove the secured spring absorber unit from the axle joint clamp boreholes
- Makes the assembly and disassembly easier
- Damage to the axle joint housing (cast or aluminium) is avoided
- Universal usage due to 2 pairs of different splay clamps and securing bolts
- Without compressing the thread ends, e.g. when pressing together
- Optimal adjustment, therefore slips are almost impossible
- Exact centring due to the screw-on and toughened bore jigs
- External drive hexagonal socket 13.0 mm
- Special steel

Application range: Audi, BMW, Ford, Peugeot, Seat, Volkswagen, etc.



				
700.5650	11 pcs	Ball joint splitter set	750	

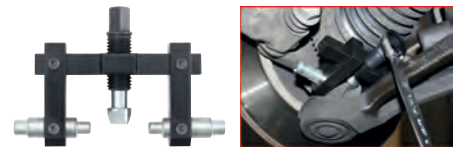
consists of:


	X			
700.5651	1	Basic unit for clamp bore holes splay tool, short	100	
700.5652	1	Guide bolt set, 2 part, 8 x 10 mm	100	
700.5653	1	Guide bolt set, 2 part, 10 x 12 mm	100	
700.5654	1	Splay wedge black, 5 mm	100	
700.5655	1	Splay wedge silver, 8 mm	100	
700.5656	1	Internal hexagon wrench, 3 mm	100	
700.5658	1	Spindle to 700.5650	50	
700.5659	2	Arm to 700.5650	100	

MASTER clamp bore hole splay tool set


- An additional bridge allows for the use of two wedges at the same time
- Especially for Audi and Volkswagen 4 wheel steering axle
- Ideal for splaying the axle joint clamp boreholes, or ball joint attachments
- It is necessary to remove the secured spring absorber unit from the axle joint clamp boreholes
- Makes the assembly and disassembly easier
- Damage to the axle joint housing (cast or aluminium) is avoided
- Universal usage due to 2 pairs of different splay clamps and securing bolts
- Without compressing the thread ends, e.g. when pressing together
- Optimal adjustment, therefore slips are almost impossible
- Exact centring due to the screw-on and toughened bore jigs
- External drive hexagonal socket 13.0 mm
- Special steel

Application range: Audi, BMW, Ford, Peugeot, Seat, Volkswagen, etc.



				
700.5660	15 pcs	MASTER clamp bore hole splay tool set	855	

consists of:

	X			
700.5651	1	Basic unit for clamp bore holes splay tool, short	100	
700.5661	1	Basic unit for clamp bore hole splay tool, long	196	
700.5652	1	Guide bolt set, 2 part, 8 x 10 mm	100	
700.5653	1	Guide bolt set, 2 part, 10 x 12 mm	100	
700.5654	2	Splay wedge black, 5 mm	100	
700.5655	2	Splay wedge silver, 8 mm	100	
700.5656	1	Internal hexagon wrench, 3 mm	100	
700.5658	2	Spindle to 700.5650	50	
700.5659	2	Arm to 700.5650	100	

1
2
3
4
5
6
7
8
9
10
11
12
13
14
15
16
17
18
19
20
21
22
23
24
25
26

SUPPORT DEVICES

Axle joint support device

- Universal usage
- Ideally suited for supporting the axle joint with a transmission jack
- The support is carried out via the wheel hub
- The axle joint can be lowered or raised as desired to the required position
- Secure fix
- Necessary, e.g. when fitting or removing the shock absorber
- Various adjustments
- Special steel



Drive		Length mm	
150.9409	Ø 22 mm	200.0	980

CAMBER ADJUSTMENT TOOLS

Camber adjustment tool

- Ideally suited to setting the camber on vehicles with separated spring feet
- One-man operation
- The tool is tensioned between the rim and the bodywork (wings)
- Clear reduction in time required
- Adjustment is carried out by turning the sturdy hexagonal nut
- External drive hexagonal socket 22.0 mm
- Special steel

Application range: Seat Toledo, Volkswagen Golf, Jetta, etc.



Clamping range mm		
150.9415	135,0 - 175,0	1.16

Camber adjustment tool

- Ideally suited to setting the camber on vehicles with separated spring feet
- One-man operation
- The tool is tensioned between the rim and the bodywork (wings)
- Clear reduction in time required
- Adjustment is carried out by turning the sturdy hexagonal nut
- External drive hexagonal socket 22.0 mm
- Special steel

Application range: Seat Cordoba, Volkswagen Polo > 1995, etc.

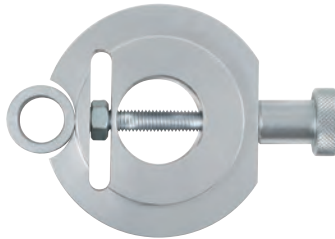


Clamping range mm		
150.9420	135,0 - 200,0	1.21

Camber setting tool for BMW

- Ideally suited to setting the camber on the front axle
- It is used after knocking out the locating bolt of the strut bearing in a downwards direction via the spring strut bearing
- Quick and correct work without a great amount of effort
- One-man operation
- The adjustment process is carried out via the exact alignment of the upper spring strut bearing
- Without this tool the correct and exact adjustment of the camber is almost impossible
- Aluminium

Application range: BMW 1 series (E81, E82, E87, E88), 3 series (E46, E90, E91, E92, E93), X3 (E83), X5 (E53), Z4 (E85, E86)



Ø mm		Height mm	
150.1821	82,0	25,0	347

Camber setting tool for BMW

- Ideally suited to setting the camber on the front axle
- It is used after knocking out the locating bolt of the strut bearing in a downwards direction via the spring strut bearing
- Quick and correct work without a great amount of effort
- One-man operation
- The adjustment process is carried out via the exact alignment of the upper spring strut bearing
- Without this tool the correct and exact adjustment of the camber is almost impossible
- Aluminium

Application range: BMW 5 series, (E39, E60, E61), 6 series (E63, E64), 7 series (E38, E65, E66, E67)



Ø mm		Height mm	
150.1822	83,0	17,0	343



BMW camber setting tool set

- Ideally suited to setting the camber on the front axle
- It is used after knocking out the locating bolt of the strut bearing in a downwards direction via the spring strut bearing
- Quick and correct work without a great amount of effort
- One-man operation
- The adjustment process is carried out via the exact alignment of the upper spring strut bearing
- Without this tool the correct and exact adjustment of the camber is almost impossible
- Aluminium

Application range: BMW 1 series (E81, E82, E87, E88), 3 series (E46, E90, E91, E92, E93), 5 series, (E39, E60, E61), 6 series (E63, E64), 7 series (E38, E65, E66, E67), X3 (E83), X5 (E53), Z4 (E85, E86)



150.1820	2 pcs	BMW camber setting tool set	689

consists of:

150.1821	BMW camber adjustment tool, 1 series, 3 series, X3, X5, Z4	347	
150.1822	BMW camber adjustment tool, 5 series, 6 series, 7 series	343	

Camber adjustment tool for BMW rear axles

- Ideally suited for adjusting the camber on the rear axle
- The rear wishbones can be moved with this therefore setting the camber
- Quick and correct work without a great amount of effort
- One-man operation
- Without this tool the correct and exact adjustment of the camber is almost impossible
- Special steel

Application range: BMW 3 series, (E36, E46)



150.1895	2 pcs	Camber adjustment tool for BMW rear axles	630

consists of:

150.1897	Camber adjustment tool for BMW E36	414	
150.1898	Adapter ring for BMW E46	213	

Axle tracking adjustment tool for VAG passenger cars with 4 wheel drive

- Ideally suited to tracking adjustments to the rear axle
- Suitable for the hard-to-reach adjustment screws
- Quick and correct work without a great amount of effort
- One-man operation
- 90° angled
- With 2 component handle
- Matt finish
- Chrome vanadium

Application range: all Audi and Volkswagen vehicles with all-wheel drive, e.g. Audi A4 Quattro, Volkswagen Passat 4motion, etc.



		Total length mm	
150.9426	M12	310.0	340

Axle tracking adjustment tool for Mercedes

- Ideally suited to tracking adjustments to the rear axle
- Suitable for the hard-to-reach adjustment screws
- Quick and correct work without a great amount of effort
- One-man operation
- Twice angled
- Without this tool the correct and exact adjustment of the tracking is almost impossible
- Includes interchangeable spline bits
- With 2 component handle
- Matt finish
- Chrome vanadium

Application range: Mercedes C class and S class, also for older models with under body panels and vehicles with level sensors



		Total length mm	
150.9470	3 pcs Axle tracking adjustment tool for Mercedes	440	

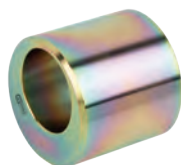
consists of:

150.9471	Basic adjustment tool for Mercedes	410
150.9472	10 mm attachment XZN® bit, M10	14
150.9443	10 mm attachment XZN® bit, M12	16

Tracking adjustment cam nut for BMW

- Ideal for adjusting the tracking on the rear axle as well as camber adjustment on the wishbone
- For adjustment the screws must be removed from the lower wishbone
- By putting in and turning the cam nut on the securing screw the wishbone is moved to the required camber adjustment
- Internal square drive to DIN 3120/ISO 1174
- Special steel

Application range: BMW E36, BMW E46, BMW E83, BMW E85



	L mm	
700.1671	40.0	300

Tracking adjustment tool for Mercedes

- Ideally suited to tracking adjustments to the rear axle
- Removes mounting of the exhaust system
- Saves a lot of time
- No adjustment of the cam screw when removing the counter nut
- External double-hex drive 21 mm with integrated TX 55 use and internal hexagon drive 17 mm
- Special steel

Application range: Mercedes W211, Mercedes C219 and Mercedes W209



			Length mm	
700.1672	21.0	T55	260.0	280

Camber level

- Ideally suited to adopting the prescribed camber adjustment values before removing the shock absorbers
- The level is secured with the magnetic side on the brake discs or wheel hubs and the value can be read
- Following the repair the adjustment value is easily restored
- Quick and correct work without a great amount of effort
- Saves measuring the axle
- With adjustment wheel to allow for a zero setting
- Includes strong magnetic feet
- In durable plastic storage case



	Total length mm	
150.9431	125.0	450

SPRING FEET BRACKET

Universal spring foot bracket

- For a secure and comfortable clamping of the spring feet
- Ensures a secure assembly and disassembly
- Eliminates damage
- With rubber clamp jaws
- Includes mounting brackets for a secure assembly on the work bench
- Special steel



500.8709	Universal spring foot bracket	3.17

MCPHERSON SPRING COMPRESSOR

Safety arrester cable for spring compressor

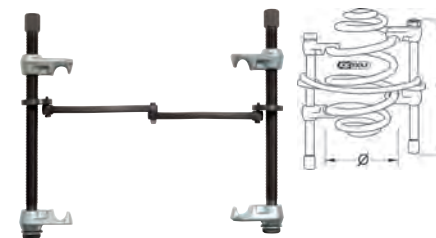
- Ideal for securing the spring to the shock absorber during assembly and disassembly
- Additional safety features
- Adaptable for McPherson spring compressor
- With snap hooks



	Total length mm	
500.8707	215.0	203

Coil spring compressor with safety latch

- Ideally suited for assembly and disassembly of coil springs
- Necessary for changing shock absorbers or coil spring
- Adjustable safety bar prevents slipping
- For vehicles up to max. 2000 kg
- Suitable for impact screws
- Meets the requirements of the trade association (ZH1/454)
- GS approved
- Special steel



	Ø mm	H mm	Max travel mm	max t	mm		
670.0021	110-180	240	200	3,5	M18x2x280	19	2.40
670.0041	110-180	300	300	1,8	M16x380	17	2.80

Coil spring compressor with safety latch and plastic coated hook

- Ideally suited for assembly and disassembly of coil springs
- Necessary for changing shock absorbers or coil spring
- Adjustable safety bar prevents slipping
- Plastic-coated hooks allow for optimal grip
- For vehicles up to max. 2000 kg
- Suitable for impact screws
- Meets the requirements of the trade association (ZH1/454)
- GS approved
- Special steel



	Ø mm	H mm	Max travel mm	max t	mm		
670.0031	110-180	240	200	3,5	M18x2x280	17	2.50
670.0051	110-180	300	300	1,8	M16x380	17	2.90

1

2

3

4

5

6

7

8

9

10

11

12

13

14

15

16

17

18

19

20

21

22

23

24

25

26

Universal McPherson spring compressor set

- Ideally suited for assembly and disassembly of McPherson spring feet
- Necessary for changing shock absorbers or coil spring
- Universal for 90% of common vehicle springs in passenger cars and transporters
- With 2 forged standard spring bracket pairs
- With vice clamp bar
- Simple and safe tensioning in the vice without additional tools
- Also suitable for conical and ball springs
- Ergonomic high-tech polyurethane handle
- Working spindle is suitable for the impact screws
- Spring brackets are fitted with a safety nose that locks the spring during stretching to increase security and safety
- Spring bracket adapters are secured with strong bolts
- Quick and easy adjustment possibilities with the handle on the drive nut
- With MOT certification
- Higher than standard load - max. load of 2250 kg
- Special steel



Technical data:

Spring force max:	2250 kg
Opening of jaws min:	65.0 mm
Jaw width max:	375.0 mm
Spring capacity:	80,0 - 195,0 mm

		kg	
500.8620	5 pcs Universal McPherson spring compressor set		11.03

consists of:

X			kg
500.8621	1	Main body spring compressor, max. load 2250 kg	5.28
500.8507	2	Standard spring bracket with Ø 80.0 - 145.0 mm	1.30
500.8508	2	Standard spring bracket with Ø 145.0 - 195.0 mm	1.58



Universal spring bracket for McPherson spring compressor

- Ideally suited for assembly and disassembly of McPherson spring feet
- For use alongside spring compressor 500.8620
- Universal for 90% of all common types of vehicles
- Necessary for changing shock absorbers or coil spring
- Spring bracket adapters are secured with strong bolts
- Forged and tempered
- Special steel

Application range: universal for 90% of all common vehicle types



		Ø mm	Suitable for	kg
500.8503	A	80-120	universal	3.36
500.8507	B	80-145	universal	1.30
500.8511	C	140-170	universal	3.50
500.8508	D	145-195	universal	1.58
500.8512	E	180-230	universal	4.50

Spring bracket for BMW/Renault/Toyota

- Ideally suited for assembly and disassembly of McPherson spring feet
- For use alongside spring compressor 500.8620
- Necessary for changing shock absorbers or coil spring
- Spring bracket adapters are secured with strong bolts
- Forged and tempered
- Special steel

Application range: BMW E39, E46, Toyota Avensis, Renault Megane 2



		kg	
500.8509	BMW, Renault, Toyota		2.40

Spring bracket for Mercedes C class

- Ideally suited for assembly and disassembly of McPherson spring feet
- For use alongside spring compressor 500.8620
- Necessary for changing shock absorbers or coil spring
- Spring bracket adapters are secured with strong bolts
- Forged and tempered
- Special steel

Application range: Mercedes C class



		kg	
500.8510	Mercedes		800

Spring bracket for Mercedes/Renault

- Ideally suited for assembly and disassembly of McPherson spring feet
- For use alongside spring compressor 500.8620
- Necessary for changing shock absorbers or coil spring
- Spring bracket adapters are secured with strong bolts
- Forged and tempered
- Special steel

Application range: Mercedes E class, Renault Megane



		kg	
500.8513	Mercedes, Renault		2.40

Spring bracket for Peugeot/Citroën

- Ideally suited for assembly and disassembly of McPherson spring feet
- For use alongside spring compressor 500.8620
- Necessary for changing shock absorbers or coil spring
- Spring bracket adapters are secured with strong bolts
- Forged and tempered
- Special steel

Application range: Peugeot Break, Citroën C15



		kg	
500.8514	Peugeot, Citroën		2.50

Spring bracket for Chrysler

- Ideally suited for assembly and disassembly of McPherson spring feet
- For use alongside spring compressor 500.8620
- Necessary for changing shock absorbers or coil spring
- Spring bracket adapters are secured with strong bolts
- Forged and tempered
- Special steel

Application range: Chrysler Voyager "left-turning-spring"



		kg	
500.8515	Chrysler		2.80

Spring bracket set for Mercedes/BMW/Renault/Toyota

- Ideally suited for assembly and disassembly of McPherson spring feet
- For use alongside spring compressor 500.8620
- Necessary for changing shock absorbers or coil spring
- Spring bracket adapters are secured with strong bolts
- Forged and tempered
- Special steel

Application range: Toyota Avenis, Renault Megane 2, Mercedes C class, E class, BMW 3 series E46, E90, BMW 5er E39, E60, E61



				kg
500.8525	2 pcs	Spring bracket set for Mercedes/BMW/Renault/Toyota		3.20

consists of:

				kg
500.8509		Spring holder, for BMW and Renault		2.40
500.8510		Spring holder, for MERCEDES C classe type 203		0.80

Universal McPherson spring compressor set with safety arrester cable and vice holders

- Contains safety arrester cable as an additional safety feature
- With vice assembly bracket to simply and safely tension in the vice
- Ideally suited for assembly and disassembly of McPherson spring feet
- Necessary for changing shock absorbers or coil spring
- Universal for 90% of common vehicle springs in passenger cars and transporters
- With 2 forged standard spring bracket pairs
- Also suitable for conical and ball springs
- Ergonomic high-tech polyurethane handle
- Working spindle is suitable for the impact screws
- Shear pin on the drive nut protects from overloading
- Spring brackets are fitted with a safety nose that locks the spring during stretching to increase security and safety
- Spring bracket adapters are secured with strong bolts
- With MOT certification
- Extremely high load - max. load of 2,600 kg
- Special steel



Technical data:

Spring force max:	2600 kg
Opening of jaws min:	50.0 mm
Jaw width max:	310.0 mm
Spring capacity:	80,0 - 195,0 mm

				kg
500.8715	7 pcs	Universal McPherson spring compressor set with safety arrester cable and vice holders		15.20

consists of:

			kg
500.8701	Spring compressor based unit, max. 2,600kg		6.00
500.8703	Safety pin set, 10 pcs 4-5mm		0.10
500.8704	Holder for spring compressor 500mm		1.50
500.8705	Spring holder pair,dbl.holding func.Ø80-160mm		3.50
500.8706	Spring holder pair,dbl.holding func.Ø140-195mm		4.00
500.8707	Safety arrester rope for 500.8700		0.20

Universal McPherson spring compressor set

- Ideally suited for assembly and disassembly of McPherson spring feet
- Necessary for changing shock absorbers or coil spring
- Universal for 90% of common vehicle springs in passenger cars and transporters
- With 2 forged standard spring bracket pairs
- Also suitable for conical and ball springs
- Ergonomic high-tech polyurethane handle
- Working spindle is suitable for the impact screws
- Shear pin on the drive nut protects from overloading
- Spring brackets are fitted with a safety nose that locks the spring during stretching to increase security and safety
- Spring bracket adapters are secured with strong bolts
- With MOT certification
- Extremely high load - max. load of 2,600 kg
- Special steel



Technical data:

Spring force max:	2600 kg
Opening of jaws min:	50.0 mm
Jaw width max:	310.0 mm
Spring capacity:	80,0 - 195,0 mm

				kg
500.8700	5 pcs	Universal McPherson spring compressor set		13.50

consists of:

			kg
500.8701	Spring compressor based unit, max. 2,600kg		6.00
500.8703	Safety pin set, 10 pcs 4-5mm		0.10
500.8705	Spring holder pair,dbl.holding function Ø80-160mm		3.50
500.8706	Spring holder pair,dbl.holding function Ø140-195mm		4.00



Spring bracket adapter set for Mercedes/BMW

- Ideally suited for assembly and disassembly of McPherson spring feet
- For use alongside spring compressor 500.8700
- Necessary for changing shock absorbers or coil spring
- Forged and tempered
- Special steel

Application range: BMW 3 series E46, E90, 5 series E39, E60, Mercedes C class (203), E class (211, 219)



				kg
500.8710	2 pcs	Spring bracket adapter set for Mercedes/BMW		500

consists of:

				kg
500.8711		Large adaptor, Mercedes		350
500.8712		Small adaptor, BMW		150

Spring bracket adapter for BMW

- Ideally suited for assembly and disassembly of McPherson spring feet
- For use alongside spring compressor 500.8700
- Necessary for changing shock absorbers or coil spring
- Forged and tempered
- Special steel

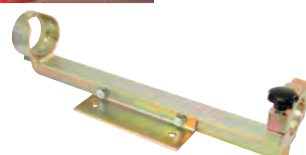
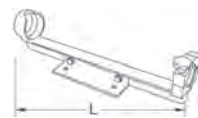
Application range: BMW 3 series E81, E82, E87, E88, 3er E90, E91, E92, E93



				kg
500.8713		Spring bracket adapter for BMW		1.34

Spring compressor vice assembly bracket

- Can be used alongside with the spring compressor 500.8700
- For safe and comfortable clamping in the vice
- Ensures a secure assembly and disassembly
- Includes a mounting bracket for horizontal or vertical use
- Special steel



			L mm	kg
500.8704			500.0	1.50

INTERNAL SPRING COMPRESSOR

Universal telescopic centre compressor set for internal springs

- Ideal for assembling and disassembling of spiral springs on wishbone and multi-link suspensions
- Safe removal and installation without dismantling the axle
- Saves a lot of time
- Universal for 90% of all common inboard types of vehicles
- New and revised design with lengthened tension path
- Can be fitted to vehicles with small access holes
- Spring collar with special geometry adapter to the usage
- Forged spring collar for secure holding of the spring spiral
- Variable system with a quick-change spring spiral pair
- Securely tensions the spring in the spring hub
- Good positioning with a compact shape
- Working spindle is suitable with the use of torsion rod impact screws supplied
- Protects against overloading with the torsion drive element
- With MOT certification
- Higher than standard load - max. load of 2,500 kg
- Special steel
- In durable plastic storage case

Application range: BMW, Chevrolet, Chrysler, Citroën, Ford, Honda, Hyundai, Kia, Mazda, Mercedes, Mitsubishi, Peugeot, Renault, Seat, Škoda, Suzuki, Toyota, Volvo, Volkswagen

Especially for BMW E87, E90, Citroën C3, Škoda Octavia, Peugeot 107, Volkswagen Touran, Volvo



Technical data:

Spring force max:	2500 kg
Opening of jaws min:	95.0 mm
Jaw width max:	220.0 mm
Square drive:	1/4"

500.8610	6 pcs Universal telescopic centre compressor set for internal springs	4.42	

consists of:

500.8611	Spring compressor based unit, 2500 kg	642	
500.8612	Spring holder pair Ø 90-120 mm	844	
500.8613	Spring holder pair Ø 120-140 mm	1148	
500.8614	Torsion drive 1/2"x1/2", 100 Nm	255	

STATIONARY SPRING COMPRESSOR

Pressurised air stand spring compressor

- Ideal for compressor spring feet
- Pressurised air support allows for extremely comfortable working
- Secure assembly and disassembly of the shock absorbers with McPherson spring feet system
- Suitable for 95% of all vehicles on the market
- Robust safety cage to prevent accidents
- Sturdy foot for optimal stand
- Simple, secure and easy to use
- Special steel



Technical data:

Operating pressure:	max. 10 bar
Connection thread:	1/4"
Air consumption:	250 l/min
Work pressure:	670 kg at 6 bar, 1200 kg at 10 bar
total length:	470.0 mm
Width:	450.0 mm
height:	1150.0 mm

500.8800	Pressurised air stand spring compressor	60.00	



Adapter plate for pressurised air stand spring compressor

- Universal adapter plate for pressurised air stand spring compressor 500.8800
- Ideal for attaching spring feet
- Optimal for a secure stand when assembling and disassembling
- With 4 securing bolts and 4 threaded bolts
- Delivered with 2 snap rings for assembly
- Simple handling
- Special steel



	Length mm	Width mm	Height mm	
500.8801	355.0	260.0	120.0	7.57

Safety stand for pressurised air spring compressor

- Sturdy safety stand to adapt the working height
- Simple assembly with straps and screws
- 4-point tubular frame with secure stand
- Special steel



	Length mm	Width mm	Height mm	
500.8802	470.0	450.0	300.0	10.24

Replacement wheel set for the pressurised air stand spring compressor

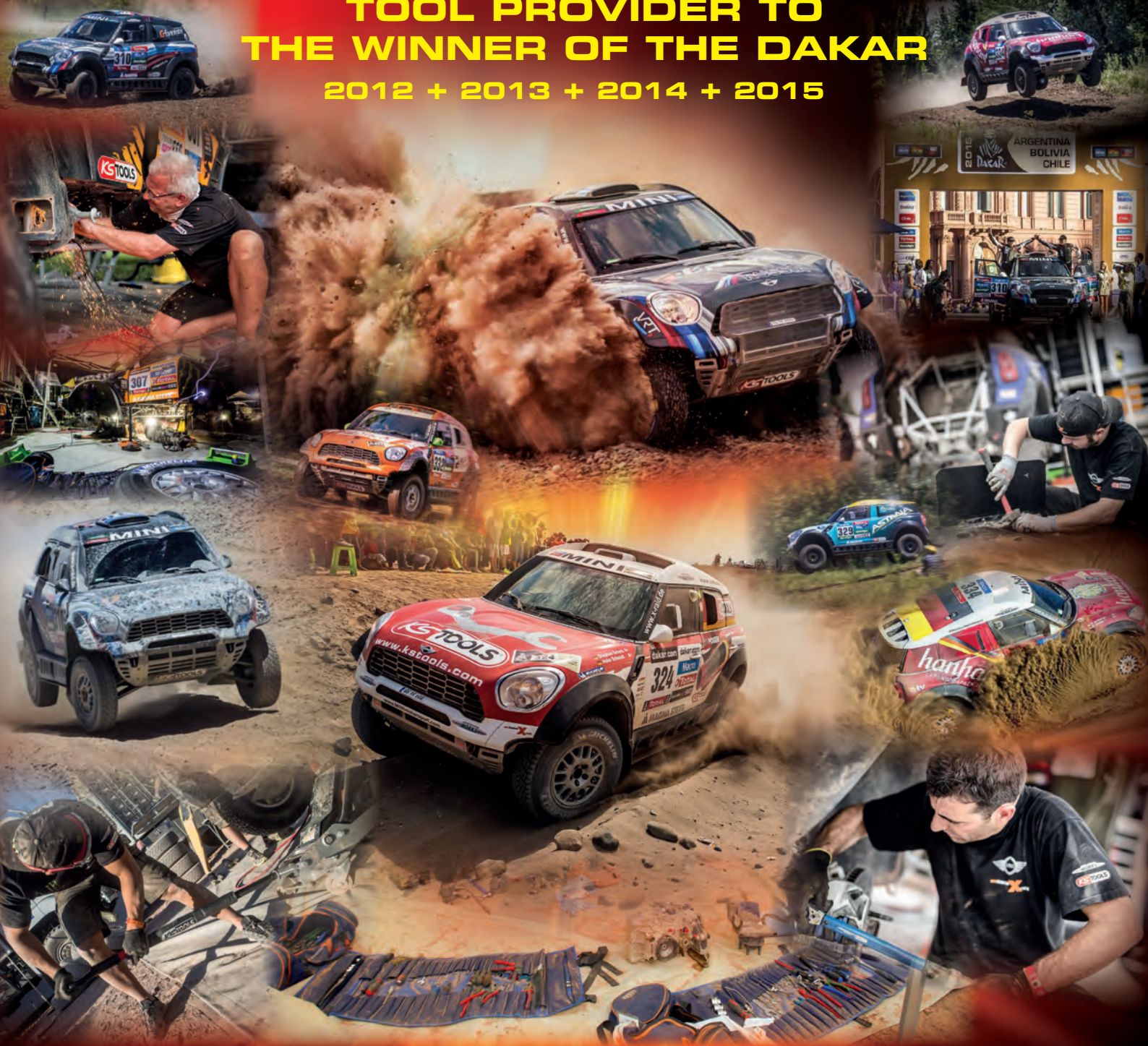
- For use with the pressurised air spring compressor 500.8800
- 2 rubber tyres at 120 mm
- Ideal for transport



500.8803	Replacement wheel set for the pressurised air stand spring compressor	1.73		

OFFICIAL AND EXCLUSIVE TOOL PROVIDER TO THE WINNER OF THE DAKAR

2012 + 2013 + 2014 + 2015



RELIABLE UNDER **EXTREME** WORKING CONDITIONS

new dimension **X**-raid



Innovation is
our mission!