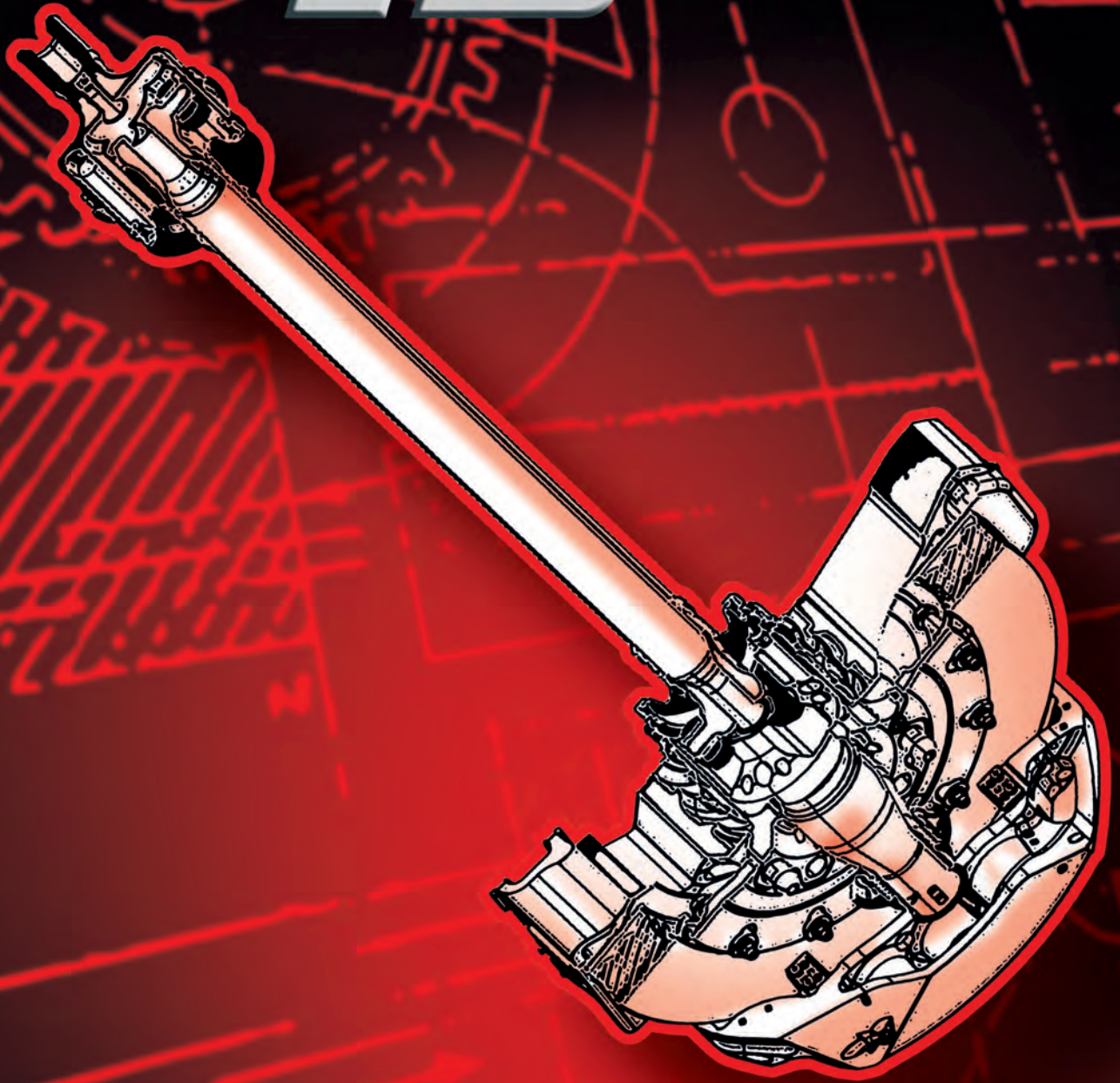
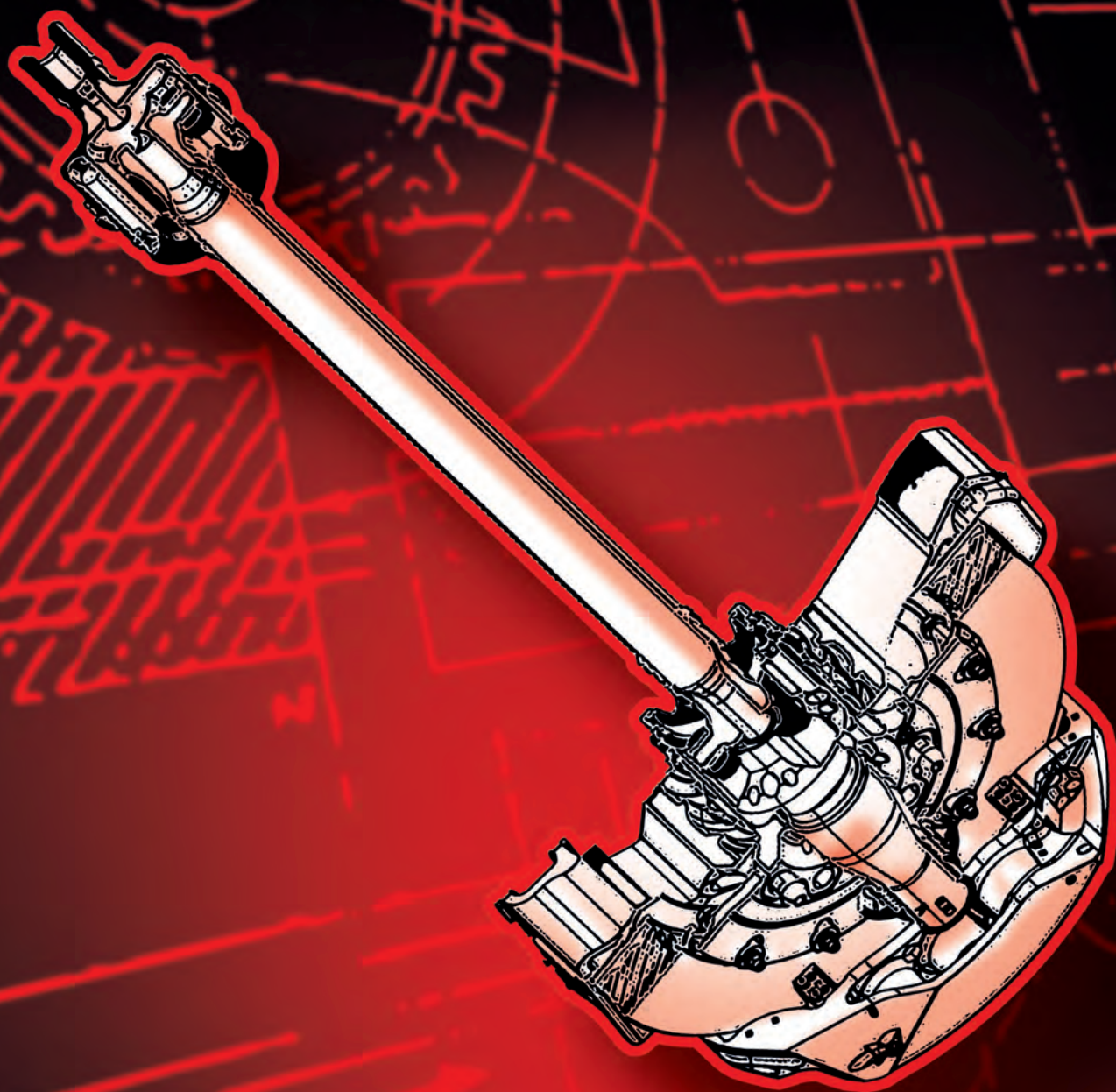


K15



KS TOOLS





Innovation is
our mission!



	PAGE
WHEEL BEARING SYSTEM PP I	518
HYDRAULIC SYSTEM PP II	518 - 520
ADAPTER	520
UNIVERSAL SPINDLE DRIVE	520
WHEEL BEARING ASSEMBLY SYSTEM PP II	521
WHEEL HUB DISASSEMBLY SYSTEM PP II	521 - 524
WHEEL HUB TOOL SYSTEM PP III	524 - 525
ABS ROTOR TOOL	525
WHEEL HUB TOOL SYSTEM PP I	525 - 526
WHEEL HUB TOOL SYSTEM PP II	526
WHEEL HUB TOOL SYSTEM PP III	526 - 527
BEARING RING TOOL	527
PLIERS FOR SECURING RINGS	527 - 529
PROP SHAFT TOOL	529 - 530
AXLE BOOTS	531
HOSE CLAMP TOOL	531 - 533
PRESS AND PULL SLEEVE SET	534 - 536
UNIVERSAL PRESS FRAME SYSTEM PP I	536
HYDRAULIC SUPPORT SYSTEM PP I	536
HYDRAULIC SUPPORT UNIVERSAL	536 - 537
C-FRAME SYSTEM PP I	537
HYDRAULIC SYSTEM PP II	537 - 539
ADAPTOR	539
PRESS STAND SYSTEM PP II	539
SILENT BEARING TOOL SYSTEM PP II	540 - 542
SILENT BEARING TOOL SYSTEM PP III	542 - 544
CAMBER ADJUSTMENT TOOLS	545
TRACKING ADJUSTMENT TOOLS	545 - 546
LEVER / PRY BARS	546 - 547
AXLE PLAY TEST TOOL	547
SOCKET SET FOR CHASSIS BOLTING	547 - 548
VIBRO IMPACT	548 - 549
EXTRACTOR	549
PRESS UNDERLAYS	549

WHEEL BEARING SYSTEM PP I

Tool set for compact wheel hub/bearing unit

- Includes spindle M18/M20
- Enables use directly on the vehicle
- Minimum labour - high time savings
- Safe and simple use
- Use also in connection with workshop press
- Possible expansion for bearing Ø 62+66 mm
- Special steel

Application area: Audi A2 from MY 00, Skoda Fabia from MY 00, Volkswagen Polo from MY 02 / Fox from MY 05, Seat Ibiza from MY 02, etc.



		Ø mm	kg
150.2145	10 pcs	72,0	9.74

consists of:

		kg
150.2146	Drive unit, 3 pcs	0.54
150.2134	Pressure bell universal	2.40
150.2133	Half cup pair black f.bearing Ø72mm	1.71
150.2149	Thrust piece for 150.2143	0.43
150.2138	Fixing screw f.half cup,M14x1,5, 3 per pack	0.05

Drive spindle

- As complement to wheel bearing puller 150.2145-1
- Special steel



Technical data:

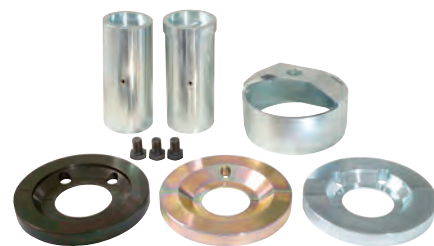
Thread:	M20
Drive spindle:	External hexagon 22.0 mm
Drive nut:	External hexagon 30.0 mm

		L mm	kg
150.2146	3 pcs	300.0	540

VAG wheel bearing tool set

- For the new VAG models with wheel housings/hub unit
- Required for the correct installation
- High time saving - faster execution at workshop press than at the vehicle ideally suited for Wheel bearing diameters 62 mm / 66 mm / 72 mm (13" / 14" / 15" -undercarriages)
- The extension of the wheel housing takes place by means of the available workshop facility

Application range: Volkswagen-Polo new, Audi A2, Skoda Fabia, Seat Ibiza



		kg
150.2130	12 pcs VAG wheel bearing tool set	17.20

consists of:

		kg
150.2131	Half shell coupling anodized, for bearing Ø 62 mm	1.99
150.2132	Half shell coupling chrome, for bearing Ø 66 mm	1.46
150.2133	Half shell coupling black, for bearing Ø 72 mm	1.71
150.2134	Pressure bell universal M22	2.40
150.2135	Thrust bearing No. 66 / 72 mm, Length 160 mm	4.20
150.2136	Thrust bearing No. 62 mm, length 160 mm	4.03
150.2137	Fixing screw M12 x 1.5, for half shell, set of 2 pieces	0.03
150.2138	Fixing screw M14 x 1.5, for half shell, set of 3 pieces	0.05

Half cup auxiliary kit Ø 62 mm

- As complement to 150.2145
- Special steel

Application range: Volkswagen Lupo, Audi A2 1,2L, etc.



		Ø mm	kg
150.2141	5 pcs	62,0	3.00

consists of:

		kg
150.2147	Thrust piece for 150.2141	427
150.2131	Half cup pair anodised f.bearing Ø62mm	1990
150.2137	Fixing screw f.half cup,M12x1,5, 2 per pack	30

Half cup auxiliary kit Ø 66 mm

- As complement to 150.2145
- Special steel

Application range: Volkswagen Polo from MY 02, Skoda Fabia from MY 00, etc.



		Ø mm	kg
150.2142	6 pcs	66,0	3.10

consists of:

		kg
150.2148	Thrust piece for 150.2142	427
150.2132	Half cup pair chrome f.bearing Ø66mm	1460
150.2138	Fixing screw f.half cup,M14x1,5,3 per pack	50

Half cup auxiliary kit Ø 72 mm

- As complement to 150.2145
- Special steel

Application range: Audi A2 from MY 00, Skoda Fabia from MY 00, Volkswagen Polo from MY 02 / Fox from MY 05, Seat Ibiza from MY 02, etc.



		Ø mm	kg
150.2143	6 pcs	72,0	2.90

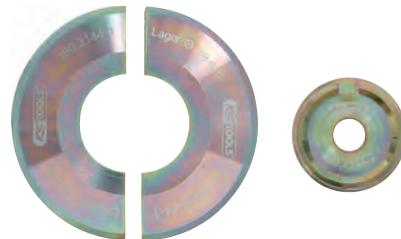
consists of:

		kg
150.2149	Thrust piece for 150.2143	427
150.2133	Half cup pair black f.bearing Ø72mm	1710
150.2138	Fixing screw f.half cup,M14x1,5, 3 per pack	50

Half-shell expansion set Ø 78 mm

- To expand 150.2145
- Special steel

Application range: Ford Focus, Volvo



		kg
150.2144	3 pcs Half-shell expansion set Ø 78 mm	2.50

consists of:

		kg
150.2144-2	Pressure piece, 80 x 20 x 22 mm	0.60
150.2144-1	Half-shell set, 2 pcs (gold)	1.84

HYDRAULIC SYSTEM PP II

Pressure and pull hydraulic cylinder set

- For the assembly and disassembly of silent bearings, steering pin bolts, wheel bearings, etc.
- Can be used in the narrowest of spaces
- With adjustable pressure rods and impact body
- With automatic piston return
- Special steel



Technical data cylinder

Capacity:	8.5 t
Connection thread:	Cejn quick coupling
Piston:	industrial forged execution
piston-inner thread:	M22
piston-outer thread:	2.1/4"
Stroke:	25.0 mm

		kg
440.0020	4 pcs Pressure and pull hydraulic cylinder set	2.19

consists of:

		kg
440.0021	Hydraulic cylinder, 8.5 t	1800
440.0022	Impact body with sealing ring	140
440.0023	Adjustable pressure rod M22, L = 100 mm	240
440.0024	(CEJN-) Nipple hydraulic	10

Pressure and pull hydraulic cylinder set

- For the assembly and disassembly of silent bearings, steering pins, track rod ends, wheel bearings, etc.
- Suitable for both pressurised and tensioned uses
- With impact body for screwing in
- Extremely high and uniform power construction
- Universal usage with reduction M10-M22
- With automatic piston return
- Special steel



Technical data cylinder

Capacity:	16 t
Connection thread:	Cejn quick coupling
Piston:	industrial forged execution
piston-inner thread:	M22
piston-outer thread:	2.1/4"
Stroke:	67.0 mm

440.0005	10 pcs	Pressure and pull hydraulic cylinder set	5.48
----------	--------	--	------

consists of:

440.0001	Hydraulic cylinder, 16 t	3380
440.0002	Pressure axle, M24 x 3 mm, L = 129.5 mm	600
440.0003	Pressure foot, M24 x 3 mm	90
440.0004	Adjustable pressure rod M24, L = 92 mm	240
440.0006	Protective ring for thread, 2.1/4"	100
440.0007	Collar nut, M18	80
440.0008	Pressure rod, M18/M22, L = 250 mm	440
440.0009	(CEJN-) Nipple hydraulic	10
440.0011	Impact body, M22 x 2.5 mm	220
440.0012	Adjustable pressure sleeve, M24, L = 132 mm	320

Pressure and pull hydraulic cylinder set

- For the assembly and disassembly of silent bearings, steering pins, track rod ends, wheel bearings, etc.
- Suitable for both pressurised and tensioned uses
- With impact body for screwing in
- Extremely high and uniform power construction
- Universal usage with reduction M10-M22
- With automatic piston return
- Ideally suited to transporters
- Special steel



Technical data cylinder

Capacity:	22 t
Connection thread:	Cejn quick coupling
Piston:	industrial forged execution
piston-inner thread:	M22
piston-outer thread:	2.1/4"
Stroke:	70.0 mm

440.0010	10 pcs	Pressure and pull hydraulic cylinder set	6.90
----------	--------	--	------

consists of:

440.0013	Hydraulic cylinder, 22 t	4640
440.0011	Impact body, M22 x 2.5 mm	220
440.0003	Pressure foot, M24 x 3 mm	90
440.0004	Adjustable pressure rod M24, L = 92 mm	240
440.0006	Protective ring for thread, 2.1/4"	100
440.0014	Pressure axle, M24 x 3, L = 151 mm	740
440.0016	Adjustable pressure sleeve, M24, L = 109 mm	340
440.0007	Collar nut, M18	80
440.0008	Pressure rod, M18/M22, L = 250 mm	440
440.0009	(CEJN-) Nipple hydraulic	10

Pressure and pull hydraulic cylinder set

- Optimal for universal use in car garages
- Suitable for both pressurised and tensioned uses
- Extremely high and uniform power construction
- Industrial design with forged piston
- Pressure of the hydraulic cylinders can be combined with the impact body with impact force during use
- Universal usage with reduction M10-M22
- With automatic piston return
- Ideally used with transporters and commercial vehicles
- Special steel



Technical data cylinder

Capacity:	32 t
Connection thread:	Cejn quick coupling
Piston:	industrial forged execution
piston-inner thread:	M24
piston-outer thread:	2.1/4"
Stroke:	113.0 mm

440.0025	6 pcs	Pressure and pull hydraulic cylinder set	9.35
----------	-------	--	------

consists of:

440.0026	Hydraulic cylinder, 32 t	8020
440.0016	Adjustable pressure sleeve, M24, L = 109 mm	340
440.0027	Protective ring for thread, 2.5	200
440.0028	Collar nut, M22	100
440.0029	Pressure rod, M22, L = 250 mm	620
440.0009	(CEJN-) Nipple hydraulic	10

Short-stroke hydraulic cylinder set

- For the assembly and disassembly of silent bearings, steering pin bolts, wheel bearings, etc.
- With adjustable pressure rod
- Maximum pressure with little effort
- Especially for use with press tool and press stand 440.0190 and 440.0180
- With automatic piston return
- Special steel



Technical data cylinder

Capacity:	14 t
Connection thread:	Cejn quick coupling
Piston:	industrial forged execution
piston-inner thread:	M24
piston-outer thread:	2.1/4"
Stroke:	55.0 mm

440.0015	3 pcs	Short-stroke hydraulic cylinder set	2.67
----------	-------	-------------------------------------	------

consists of:

440.0017	Hydraulic cylinder, 14 t	2420
440.0004	Adjustable pressure rod M24, L = 92 mm	240
440.0009	(CEJN-) Nipple hydraulic	10

Pull rod, collar nut, adapter set

- Universal usage
- Extremely robust spindle with inductive hardened thread (M10-M22)
- Optimal use with trucks, transporters and commercial vehicle tools with corresponding reduction
- Ideally suited to hydraulic cylinders 440.0005, 440.0010 and 440.0020
- Special steel

Caution: The spindles must be greased before first use!



440.0040	13 pcs	Pull rod, collar nut, adapter set	1.98
----------	--------	-----------------------------------	------

consists of:

440.0041	Pressure rod, M10	80
440.0042	Pressure rod, M12	180
440.0043	Pressure rod, M14	240
440.0008	Pressure rod, M18/M22, L = 250 mm	440
440.0029	Pressure rod, M22, L = 250 mm	620
440.0044	Adapter, M22-M10	50
440.0045	Adapter, M22-M12	50
440.0046	Adapter, M22-M14	40
440.0047	Collar nut, M10	20
440.0048	Collar nut, M12	20
440.0049	Collar nut, M14	60
440.0007	Collar nut, M18	80
440.0028	Collar nut, M22	100

Hydraulic foot pump set

- For simple acting press cylinder
- Safety valve for prevention against too much force
- With automatic return
- Includes hydraulic hose with quick coupling



Technical data:

Connection thread:	Cejn quick coupling
Volume:	0,75 l
Operating pressure:	700 bar
Tube length:	2200 mm

440.0060	4 pcs	Hydraulic foot pump set	7.83
----------	-------	-------------------------	------

consists of:

440.0057	Hydraulic hose, 2200 mm	900
440.0058	Cejn quick coupling	200
440.0061	Hydraulic foot pump	6720
440.0070	Seal set	10

Pneumatic hydraulic pump set

- Pneumatic operation
- For simple acting press cylinder
- Safety valve for prevention against too much force
- With automatic return
- Includes hydraulic hose with quick coupling



Technical data:

Connection thread:	Cejn quick coupling
Volume:	1,4 l
Operating pressure:	700 bar
Tube length:	2200 mm

440.0055	3 pcs	Pneumatic hydraulic pump set	6.32
----------	-------	------------------------------	------

consists of:

440.0056	Pneumatic hydraulic pump	5220
440.0057	Hydraulic hose, 2200 mm	900
440.0058	Cejn quick coupling	200

Manometer

- With Cejn quick coupling for direct coupling to all KS Tools hydraulic pumps
- With easy-to-read scale in psi and bar

Caution: The maximum pressure values for the hydraulic cylinder and given in the appropriate operator's manual



440.0063	Manometer	500
----------	-----------	-----

ADAPTER

Klann adapter

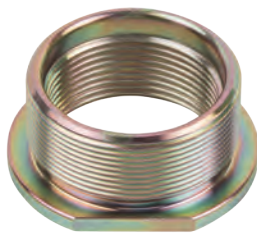
- For using the Klann hydraulic cylinder (17 t) with KS Tools tool 1.1/2" external thread
- Adapter 2.1/4"-14 UNS (Klann thread) to 1.1/2"
- Special steel



440.0038	Klann adapter	1.08
----------	---------------	------

Klann adapter

- For use with the KS Tools hydraulic cylinder (8.5-22 t) with Klann special tool
- Adapter 1.1/2" to 2.1/4"-14 UNS (Klann thread)
- Special steel



440.0036	Klann adapter	200
----------	---------------	-----

Klann adapter

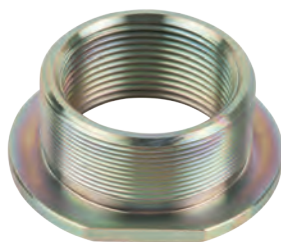
- For using the KS tools hydraulic cylinder with the Klann special tool (connection 2.3/4")
- Adapter 2.3/4"-16 UNS (Klann thread) to 2.1/2"
- Special steel



440.0409	Klann adapter	760
----------	---------------	-----

Adapter for Sauer, Müller, KS PP 1

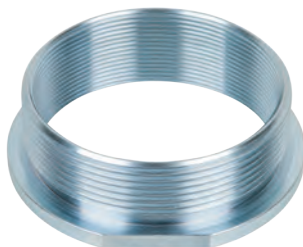
- For use of the hydraulic cylinder on Sauer, Müller, KS PP 1 with KS Tools tool
- Adapter 1.1/2" to 2.1/4"-16 UN (Sauer, Müller, KS PP 1)
- Special steel



440.0034	Adapter for Sauer, Müller, KS PP 1	230
----------	------------------------------------	-----

Paschke adapter

- For using the Paschke hydraulic cylinder with KS Tools tool
- Adapter M68 x 2 mm (Paschke thread) to 1.1/2"
- Special steel



440.0407	Paschke adapter	110
----------	-----------------	-----

Paschke adapter

- For using the Paschke hydraulic cylinder with KS Tools tool
- Adapter M68 x 2 mm (Paschke thread) to 1.1/2"-11G
- Special steel



440.0408	Paschke adapter	330
----------	-----------------	-----

Adapter for 32 t hydraulic cylinder

- For use with hydraulic cylinder 16 t (440.0005) and 22 t (440.0010) to the 2.1/2" thread from 32 t hydraulic cylinder (440.0025)
- Adapter 1.1/2" to 2.1/2"-11 UN



440.0037	Adapter for 32 t hydraulic cylinder	570
----------	-------------------------------------	-----

UNIVERSAL SPINDLE DRIVE

Mechanical spindle set

- Universally usable pressure rod including collar nut and pressure piece
- Extremely robust spindle with inductively hardened thread
- Ideally suited to tool sets 440.0075, 440.0065, 440.0095, 440.0100, 440.0073 and 440.0105
- Special steel

Caution: The spindles must be greased before first use!



440.0035	4 pcs	Mechanical spindle set	1.11
----------	-------	------------------------	------

consists of:

440.0031	Pressure rod with collar nut, M18, L = 30 mm	660
440.0032	Ring washer	60
440.0033	Pressure disk	310
440.0007	Collar nut, M18	80

WHEEL BEARING ASSEMBLY SYSTEM PP II

Universal tool set for compact wheel bearing assembly

- For the assembly of compact wheel bearings with and without securing ring
- Correct installation directly on the vehicle
- Max. load 22 t
- Adjustability allows for use on all compact bearing types
- Can be used with hydraulic cylinders or mechanical spindles
- Minimum work time
- Secure and easy to use
- Can be used alongside 440.0072, 440.0069, 440.0071 and 440.0064
- Special steel

Recommended hydraulic cylinder: 16 t (4400005) and 22 t (440.0010)

Application range: Volkswagen Polo, Lupo, Touareg, Fox, T5; Audi A2; Seat Ibiza, Cordoba; Škoda Fabia; Ford Focus, C-Max, Mondeo, S-Max, Kuga; Landrover Freelander 2; Mazda 3-5, 6, CX-7; Mercedes Sprinter, Vito; Volvo V50, S40, V70, S80, XC60; Mitsubishi Colt; Smart Forfour



440.0065	9 pcs	Universal tool set for compact wheel bearing assembly	7.26
----------	-------	---	------

consists of:

X			
440.0066	1	Securing plate	2080
440.0067	4	Press foot	1240
440.0068	4	Screw, M14 x 30	60

Assembly retainer plate Ford/Mazda/Volvo

- Ideal for compact bearing insertion as a retainer
- Secure and easy to use
- Optimal fit
- Suitable for spindle M20
- Special steel

Application range: Ford Mondeo, Focus, C-Max; Mazda 3, 6; Volvo V70, S40, V50



440.0072		20.25	640
----------	--	-------	-----

Assembly ring Ford/Mazda/Volvo

- Ideal for pressing in compact bearings
- Special steel

Application range: Volvo V70 > 2007, Ford Mondeo, Mazda 6



440.0069		Assembly ring Ford/Mazda/Volvo	60
----------	--	--------------------------------	----

Retainer plate assembly, Volkswagen

- Ideal for retaining during wheel bearing assembly
- Simple handling
- Suitable for spindle M20
- Special steel

Application range: Volkswagen T5, Touareg

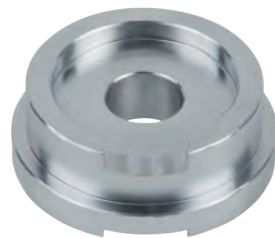


440.0071	20.25	840
----------	-------	-----

Assembly retainer plate Volkswagen/Audi/Seat/Skoda

- Ideal for compact bearing insertion as a retainer
- Simple handling
- Suitable for spindle M20
- Special steel

Application range: Volkswagen Polo, Lupo, Fox, Audi A2, Seat Ibiza, Cordoba, Škoda Fabia, Smart Forfour, Mitsubishi Colt



440.0064	20.25	510
----------	-------	-----

WHEEL HUB DISASSEMBLY SYSTEM PP II

Universal tool for compact wheel bearing assembly

- For the disassembly of compact wheel bearings with or without securing ring
- Correct disassembly directly on the vehicle
- Max. load 22 t
- Adjustability ensures use on all compact bearing types
- Can be used with hydraulic cylinders or mechanical spindles
- Minimum work time
- Secure and easy to use
- Can be used alongside 440.0074
- Special steel

Recommended hydraulic cylinder: 16 t (4400005) and 22 t (440.0010)

Application range: Volkswagen Polo, Lupo, Touareg, Fox, T5; Audi A2; Seat Ibiza, Cordoba; Škoda Fabia; Ford Focus, C-Max, Mondeo, S-Max, Kuga; Landrover Freelander 2; Mazda: 3-5, 6, CX-7; Mercedes Sprinter, Vito; Volvo V50, S40, V70, S80, XC60; Mitsubishi Colt; Smart Forfour



440.0073		Universal tool for compact wheel bearing assembly	7.32
----------	--	---	------

Universal disassembly disk, conical

- Conical disk for the assembly of compact wheel bearings
- Suitable for all sizes
- Special steel



440.0074		Universal disassembly disk, conical	110
----------	--	-------------------------------------	-----

Universal wheel bearing drive axle hub set

- Universal front-wheel bearing set with combined wheel hub/ drive shaft frame
- Ideal for use alongside hydraulic cylinders or mechanical spindles
- For the assembly and disassembly of wheel bearings, hubs and drive shafts directly on the vehicle
- No removal of the ABS sender, axle joint, spring feet or track rod joint
- Saves a lot of time since the axle does not need to be measured again
- Secure and easy to use
- Can be used alongside 440.0095, 440.0150 and 440.0100
- Special steel

Recommended hydraulic cylinder: 16 t (4400005) and 22 t (440.0010)



440.0075	16 pcs	Universal wheel bearing drive axle hub set	11.14
----------	--------	--	-------

consists of:

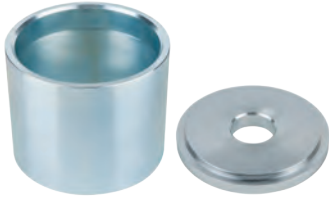
440.0076	Hub screw, Ø 32 mm	30
440.0077	Hub screw, Ø 40 mm	70
440.0078	Hub screw, Ø 45 mm	100
440.0079	Hub screw, Ø 52 mm	130
440.0081	Pressure disk	550
440.0082	Adapter for 440.0075	150
440.0083	Retainer	810
440.0084	Pressure tube	500
440.0086	Bearing shell	780
440.0087	Bearing screw, Ø 63 mm	300
440.0088	Bearing screw, Ø 68 mm	350
440.0089	Bearing screw, Ø 71 mm	400
440.0091	Bearing screw, Ø 74 mm	440
440.0092	Bearing screw, Ø 78 mm	480
440.0093	Bearing screw, Ø 83 mm	550
440.0094	Press frame for drive shaft and hub	5500



Bearing and hub shell set

- Expansion for universal wheel bearing drive axle hub set (440.0075)
- Ideal for the assembly and disassembly of wheel bearings and hubs
- Secure and easy to use
- Special steel

Application range: Ford C-Max, Mazda 3, Volvo S40/V50, as well as certain models from Citroën, Peugeot, Renault and VAG with separated wheel bearings/hubs



			kg
440.0095	2 pcs	Bearing and hub shell set	4.98

consists of:

			kg
440.0096	Pressure disk, large	2.20	
440.0097	Pressure pipe, large	2.78	

Adjustable wheel bearing plate

- Ideally used when disassembling wheel bearings which are removed from the inside
- Allows for a flat press surface with 3 installation screws
- The wheel bearings do not tilt
- Used together with the universal wheel bearing axle drive hub set (440.0075)
- Secure and easy to use
- Special steel

Application range: Citroën, Peugeot and Renault



			kg
440.0100	4 pcs	Adjustable wheel bearing plate	1.98

consists of:

			kg
440.0102	3	screw	120
440.0103	1	Plate	1660

Separator screw set for Volkswagen wheel bearing

- Expansion for universal wheel bearing drive axle hub set (440.0075)
- Ideal for the assembly and disassembly of wheel bearings and hubs
- Special for Volkswagen models, front and rear
- Secure and easy to use
- Special steel

Application range: Volkswagen T5, Touareg



			kg
440.0150	9 pcs	Separator screw set for Volkswagen wheel bearing	480

consists of:

			kg
X			
440.0132	2	Spacer screw, front	20
440.0133	1	Spacer bolt, front	200
440.0134	3	Spacer screw rear, drum brake	40
440.0137	3	Spacer screw, rear	40

Wheel bearing set, front for Ford

- For the assembly and disassembly of compact bearings on the front axle
- Correct installation and removal directly on the vehicle
- Wheel bearing replacement direct on the vehicle with minimal time required
- Replacing the brake disks or destroyed wheel bearings
- Secure and easy to use
- For use with hydraulic cylinder
- Special steel

Recommended hydraulic cylinder: 32 t (440.0025)
Application range: Ford Transit > 2000



			kg
440.0130	6 pcs	Wheel bearing set, front for Ford	9.25

consists of:

			kg
440.0096	Pressure disk, large	2200	
440.0097	Pressure pipe, large	2780	
440.0111	Hub disk	110	
440.0131	Hub tool, Ford Transit	3000	
440.0113	Bearing disk	470	
440.0098	Pressure tube	690	

Wheel bearing set, rear for Ford

- For assembly and disassembly on compact bearings on the rear axle
- Correct installation and removal directly on the vehicle
- M14 x 2 special nuts for the best centring
- Ideal for 5 hole hubs
- Secure and easy to use
- For use with hydraulic cylinder
- Special steel

Recommended hydraulic cylinder: 32 t (440.0025)
Application range: Ford Transit > 2000



			kg
440.0135	6 pcs	Wheel bearing set, rear for Ford	4.53

consists of:

			kg
440.0124	Drive shaft press out device, 5 hole	4080	
440.0136	Special nut set, 5 pcs, M14 x 2	450	

Wheel bearing set, front for Renault/Nissan/Opel

- For the assembly and disassembly of compact bearings on the front axle
- Correct installation and removal directly on the vehicle
- Minimum work time
- Secure and easy to use
- No damage to the ABS sender
- Special steel

Recommended hydraulic cylinder: 32 t (440.0025)
Application range: Renault Master, Nissan Interstar, Opel Movano > 2010



			kg
440.0165	8 pcs	Wheel bearing set, front for Renault/Nissan/Opel	12.81

consists of:

			kg
440.0166	Pressure sleeve, front for Renault/Nissan/Opel	1060	
440.0111	Hub disk	110	
440.0112	Pressure disk, Ø 167 mm	3170	
440.0113	Bearing disk	470	
440.0127	Pressure tube	3620	
440.0098	Pressure tube	690	
440.0085	Pressure ring set for wheel bearing set, front, 4 pcs	2760	
440.0162	Pressure disk	930	

Wheel bearing set, front for Nissan/Opel/Renault

- For the assembly and disassembly of compact bearings on the front axle
- Correct installation and removal directly on the vehicle
- Minimum work time
- Secure and easy to use
- No damage to the ABS sender
- Special steel

Recommended hydraulic cylinder: 16 t (440.0005), 22 t (440.0010), 32 t (440.0025)
Application range: Nissan Primastar, Opel Vivaro, Renault Trafic



			kg
440.0155	8 pcs	Wheel bearing set, front for Nissan/Opel/Renault	9.62

consists of:

			kg
440.0083	Retainer	810	
440.0084	Pressure tube	500	
440.0139	Bearing disk Ø 57 mm	250	
440.0093	Bearing screw, Ø 83 mm	550	
440.0138	Bearing disk Ø 88 mm	610	
440.0111	Hub disk	110	
440.0112	Pressure disk, Ø 167 mm	3170	
440.0127	Pressure tube	3620	

Wheel bearing set, front for Citroën/Fiat/Peugeot

- For the assembly and disassembly of compact bearings on the front axle
- Only for use alongside the bearing disk (440.0113) and hub disk (440.0123)
- Correct installation and removal directly on the vehicle
- Minimum work time
- Secure and easy to use
- No damage to the ABS sender
- For all models >2007 the press ring (440.0085) must be used
- Special steel

Recommended hydraulic cylinder: 32 t (440.0025)

Application range: Citroën Jumper, Fiat Ducato, Peugeot Boxer, < 2007



440.0125	8 pcs	Wheel bearing set, front for Citroën/Fiat/Peugeot	11.71
----------	-------	---	-------

consists of:

440.0126	Press ring	1290
440.0112	Pressure disk, Ø 167 mm	3170
440.0127	Pressure tube	3620
440.0128	Bearing disk	970
440.0129	Retainer	1610
440.0098	Pressure tube	690
440.0099	Hub disk	160
440.0104	Drive nut, M22	200

Wheel bearing set, rear for Citroën/Fiat/Ford/Peugeot

- For assembly and disassembly on compact bearings on the rear axle
- Ideally suited as a drive shaft tool for all 5 hole hubs
- Correct installation and removal directly on the vehicle
- Minimum work time
- Secure and easy to use
- No damage to the ABS sender
- Suitable for all transport vehicles
- Special steel

Recommended hydraulic cylinder: 32 t (440.0025)

Application range: Citroën Jumper, Fiat Ducato, Peugeot Boxer, Ford Transit



440.0120	6 pcs	Wheel bearing set, rear for Citroën/Fiat/Ford/Peugeot	7.06
----------	-------	---	------

consists of:

440.0011	Impact body, M22 x 2.5 mm	220
440.0113	Bearing disk	470
440.0121	Pressure sleeve	1620
440.0122	Adapter ring	450
440.0123	Hub disk for wheel bearing set, front Citroën/Fiat/Ford/Peugeot	220
440.0124	Drive shaft press out device, 5 hole	4080

Wheel bearing set, front for Renault/Nissan/Opel 2002-2010

- For the assembly and disassembly of compact bearings on the front axle
- Correct installation and removal directly on the vehicle
- Minimum work time
- Secure and easy to use
- No damage to the ABS sender
- For all models >2010 the press sleeve (440.0160) and the press ring set (440.0085) must be used
- Special steel

Recommended hydraulic cylinder: 16 t (440.0005), 22 t (440.0010), 32 t (440.0025)

Application range: Nissan Interstar, Opel Movano, Renault Master 2002-2010



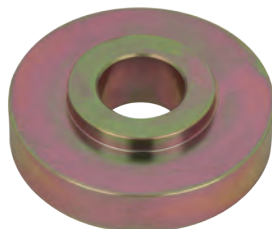
440.0160	9 pcs	Wheel bearing set, front for Renault/Nissan/Opel 2002-2010	13.93
----------	-------	--	-------

consists of:

440.0085	Pressure ring set for wheel bearing set, front, 4 pcs	2760
440.0098	Pressure tube	690
440.0111	Hub disk	110
440.0112	Pressure disk, Ø 167 mm	3170
440.0113	Bearing disk	470
440.0127	Pressure tube	3620
440.0161	Bearing shell	1540
440.0162	Pressure disk	930
440.0163	Pressure disk	640

Bearing disk for wheel bearing set, front Citroën/Fiat/Ford/Peugeot

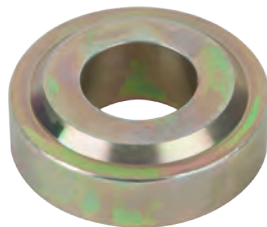
- For expanding the wheel bearing set, front 440.0125, if the wheel bearing set, rear (440.0120) is not available
- Special steel



440.0113	Bearing disk for wheel bearing set, front Citroën/Fiat/Ford/Peugeot	470
----------	---	-----

Hub disk for wheel bearing set, front Citroën/Fiat/Ford/Peugeot

- For expanding the wheel bearing set, front (440.0125), if the wheel bearing set, rear (440.0120) is not available
- Special steel



440.0123	Hub disk for wheel bearing set, front Citroën/Fiat/Ford/Peugeot	220
----------	---	-----

Press ring set for wheel bearing set, front

- Press ring for expansion of the various wheel bearing sets (440.0125 and 440.0160)
- Special steel

Application range: Citroen Jumper, Fiat Ducato, Peugeot Boxer > 2007, Renault > 2010, Nissan > 2010, Opel > 2010



440.0085	4 pcs	Press ring set for wheel bearing set, front	2.76
----------	-------	---	------

Pressure sleeve, front for Renault/Nissan/Opel

- Press sleeve for wheel bearing set (440.0160)
- Ideally suited to expanding the set for the wheel bearing assembly on models >2010
- Special steel



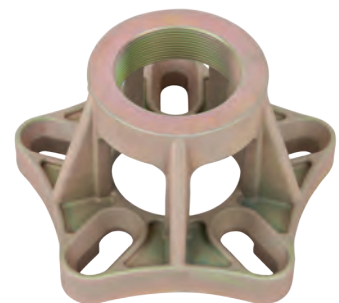
440.0166	Pressure sleeve, front for Renault/Nissan/Opel	1.06
----------	--	------

Drive shaft press out device, 5 hole

- Specially for the removal of rusty and stuck drive shafts directly on the vehicle
- Suitable for all transport vehicles with 5 hole hubs
- For hole diameters of 100-170 mm
- Ideal for the disassembly of the wheel hub with hydraulic cylinder
- No damage to the drive shaft or other parts
- Secure and easy to use
- Minimum work time
- Special steel

Recommended hydraulic cylinder: 32 t (440.0025)

Application range: Transport vehicles



440.0124	Drive shaft press out device, 5 hole	4.08
----------	--------------------------------------	------

1
2
3
4
5
6
7
8
9
10
11
12
13
14
15
16
17
18
19
20
21
22
23
24
25
26

Wheel hub set, front for Renault

- Expansion for wheel bearing set (440.0160)
- Ideal for the removal of wheel hubs and wheel bearings
- Secure and easy to use
- Optimal usage for brake disks mounted behind the wheel hub
- Pressing out the hub with the help of the wheel hub tool (440.0124)
- Minimum work time
- Special steel

Recommended hydraulic cylinder: 32 t (440.0025)

Application range: Renault Master, models with the brake disks mounted behind the wheel hub



				10
440.0170	7 pcs	Wheel hub set, front for Renault	3.44	

consists of:

				10
X				
440.0171	3	Pressure piece	980	
440.0172	1	Press cone	1000	
440.0173	1	Cover	740	
440.0174	1	Disassembly ring	640	
440.0007	1	Collar nut, M18	80	

Wheel hub puller set, Iveco

- Special tool for removing the prop shaft or the wheel hub
- Ideal for use with a hydraulic cylinder
- Easy installation and easy handling
- Special steel

Recommended hydraulic cylinder: 16 t (440.0005), 22 t (440.0010)

Application range: Iveco Daily 29-50



				10
440.0140	4 pcs	Wheel hub puller set, Iveco	1.42	

consists of:

				10
X				
440.0114	3	Screw M14 x 40	60	
440.0168	1	Plate	1240	

Wheel bearing set, rear for Mercedes

- For assembly and disassembly on compact bearings on the rear axle
- Correct installation and removal directly on the vehicle
- Minimum work time
- Secure and easy to use
- No damage to the ABS sender
- Special steel

Recommended hydraulic cylinder: 16 t (440.0005) and 22 t (440.0010)

Application range: Mercedes Vito, Viano (W639) 2003-2010



				10
440.0090	10 pcs	Wheel bearing set, rear for Mercedes	8.31	

consists of:

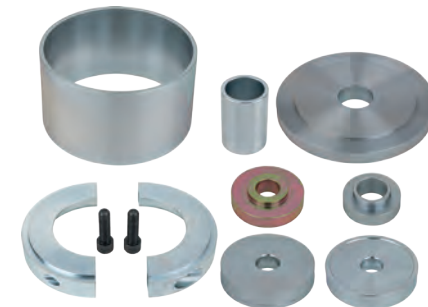
				10
X				
440.0071	1	Assembly retainer plate for VW	840	
440.0078	1	Hub screw, Ø 45 mm	100	
440.0081	1	Pressure disk	550	
440.0084	1	Pressure tube	500	
440.0087	1	Bearing screw, Ø 63 mm	300	
440.0092	1	Bearing screw, Ø 78 mm	480	
440.0094	1	Press frame for drive shaft and hub	5500	
440.0137	3	Spacer screw, rear	40	

Wheel bearing set for Volkswagen/Audi/Porsche

- For assembly and disassembly on compact bearings on the front and rear axle
- Correct installation and removal directly on the vehicle
- Minimum work time
- Secure and easy to use
- No damage to the ABS sender
- Special steel

Recommended hydraulic cylinder: 16 t (440.0005), 22 t (440.0010) and 32 t (440.0025)

Application range: Audi Q7, Volkswagen Touareg, Porsche Cayenne



				10
440.0105	10 pcs	Wheel bearing set for Volkswagen/Audi/Porsche	10.33	

consists of:

				10
440.0084	Pressure tube	500		
440.0106	Pressure tube	1780		
440.0107	Pressure tube	2500		
440.0108	Bearing disk	870		
440.0109	Bearing disk	930		
440.0113	Bearing disk	470		
440.0111	Hub disk	110		
440.0112	Pressure disk, Ø 167 mm	3170		

WHEEL HUB TOOL SYSTEM PP III

Universal car wheel bearing tool set

- For the dismantling and assembly of wheel housings and hub directly on the vehicle
- Extension of the suspension strut and axle joint is no longer required
- Correct and protective installation of the housings through the correct pressure point at the bearing outer ring
- Suited for axle tube and for axle with the housing adjoining at an alliance
- High time savings as reactive axle alignment is not necessarily required
- 300 mm gear pulling spindle
- Through enclosed bolts (M12 + M14) wheel hubs can be removed
- Pressure bearing protects against increased friction during the process
- Special steel
- In durable plastic storage case

Application range: Volkswagen, Audi, Opel, Mercedes Benz, Peugeot, Citroen, Renault, Ford, Honda, Mazda, Mitsubishi, Nissan, Toyota, Austin-Maestro, BMW



				10
150.2250	31 pcs	Universal car wheel bearing tool set	11.24	

consists of:

				10
150.2092	Threaded bolt, f.150.2250, M12x1,5 3p	100		
150.2093	Threaded bolt, f.150.2250, M14x1,5 3p	120		
150.2251	Bearing plate #1 f.150.2250	525		
150.2252	Bearing plate #2 f.150.2250	458		
150.2253	Bearing plate #3 f.150.2250	432		
150.2254	Bearing plate #4 f.150.2250	386		
150.2255	Bearing plate #5 f.150.2250	358		
150.2256	Bearing plate #6 f.150.2250	340		
150.2257	Bearing plate #7 f.150.2250	304		
150.2258	Bearing plate #8 f.150.2250	344		
150.2259	Bearing plate #9 f.150.2250	304		
150.2260	Bearing plate #10 f.150.2250	282		
150.2261	Bearing plate #11 f.150.2250	247		
150.2262	Bearing plate #12 f.150.2250	200		
150.2263	Bearing plate #13 f.150.2250	217		
150.2264	Bearing plate #14 f.150.2250	203		
150.2265	Stepped plate, small f.150.2250, Ø77+68mm	608		
150.2266	Stepped plate, large f.150.2250, Ø92+81mm	879		
150.2267	Puller sleeve f.150.2250, 68mm	399		
150.2268	Puller sleeve f.150.2250, 77mm	552		
150.2269	Puller sleeve f.150.2250, 81mm	639		
150.2270	Puller sleeve f.150.2250, 92mm	707		
150.2271	Spindle sleeve f.150.2250	227		
150.2272	Thrust bolt f.150.2250	230		
150.2273	Washer f.150.2250	20		
150.2274	Spindle f.150.2250	911		
150.2275	Bearing f.150.2250	55		

Universal car wheel bearing tool set

- For the dismantling and assembly of wheel housings and hub directly on the vehicle
- Extension of the suspension strut and axle joint is no longer required
- Suited for axle tube and for axle with the housing adjoining at an alliance
- High time savings as reactive axle alignment is not necessarily required
- With 300 mm gear pulling spindle
- Through enclosed bolts (M12 + M14) wheel hubs can be removed
- Extra long execution 65 mm pressure nut for better load distribution
- Pressure bearing protects against increased friction during the process
- Special steel
- In durable plastic storage case

Application range: Volkswagen, Audi, Opel, Mercedes Benz, Peugeot, Citroen, Renault, Ford, Honda, Mazda, Mitsubishi, Nissan, Toyota, Austin-Maestro, BMW



150.2075	19 pcs	Universal car wheel bearing tool set	7.51
----------	--------	--------------------------------------	------

consists of:

150.2076	Ball bearing Adaptor 55.5 mm	175
150.2077	Ball bearing Adaptor 59 mm	200
150.2078	Ball bearing Adaptor 62 mm	220
150.2079	Ball bearing Adaptor 65 mm	245
150.2080	Ball bearing Adaptor 66 mm	250
150.2081	Ball bearing Adaptor 71.5 mm	315
150.2082	Ball bearing Adaptor 73 mm	335
150.2083	Ball bearing Adaptor 78 mm	380
150.2084	Ball bearing Adaptor 84 mm	470
150.2085	Reducing sheath 76 mm	270
150.2086	Bell 88 mm	850
150.2087	Bell 91 mm	920
150.2089	Spindle includes Nut, bearing, Discs and sheaths	540
150.2092	Threaded bolt Set M12 x 1.5 (3 pieces)	100
150.2093	Threaded bolt Set M14 x 1.5 (3 pieces)	120



Wheel bearing tool kit Ford Transit

- For the assembly and disassembly of the compact wheel hub/ bearing unit
- Correct installation and removal directly on the vehicle
- Minimum work time
- Secure and easy to use
- Special steel
- In durable plastic storage case

Application range: Front axle Ford Transit from 2000-2006



150.2370	17 pcs	Wheel bearing tool kit Ford Transit	8.77
----------	--------	-------------------------------------	------

consists of:

150.2371	Counter bracket f. wheel hub flange	570
150.2372	Wheel hub flange with threaded adaptor 1.1/2" x 16G	2310
150.2373	Pressure plate big	350
150.2374	Pressure plate small	160
150.2375	Locking pin f. wheel hub flange, 5 pcs	260
150.2376	Thrust bolt 1.1/2" x 16G	2030
150.2377	Half shell coupling for bearing ring, 2 pcs	910
150.2378	Trailing arm f. half shell coupling, 3 pcs	405
150.2379	Locking pin f. half shell coupling, 2 pcs	60

Wheel bearing tool set

- Removal and installation of the compact wheel hubs / bearing unit
- Enables de -and assembly directly on the vehicle
- Minimum labour
- Safe and simple use
- Special steel
- In durable plastic storage case

Application range: Volkswagen T5 Transporter



150.2350	13 pcs	Wheel bearing tool set	20.00
----------	--------	------------------------	-------

consists of:

150.2351	Cross member with threaded ring	2600
150.2352	Tie rod set, 2 pcs	1100
150.2353	Half cup mounting, 2 pcs	4950
150.2354	Half cup set, 2 pcs Removal	1700
150.2355	Half cup set, 2 pcs Installation	1900
150.2356	Thrust piece removal	550
150.2357	Thrust piece installation	950
150.2358	Trapezoidal threaded spindle with 2x thrust bearing and nut	1250
980.1085	Special thread grease	22

ABS ROTOR TOOL

Special nut for ABS rotor, Jaguar

- Ideally suited to the assembly and disassembly of the ABS rotors, e.g. when changing the wheel bearings
- Internal square in accordance with DIN 3121 / ISO 1174
- Special profile
- For manual operation
- Matt finish
- Chrome vanadium

Application range: Jaguar XK8 and XKR (X100) 3.5/XK8 and XKR (X100) 5.0/Jaguar XJ8 and XJR (X308) 3.2 and 4.0/all S Type V8/all XF V8/all XJ (X351) V8



150.2490	Height mm	Ø mm	Weight
	62.0	70.0	760

WHEEL HUB TOOL SYSTEM PP I

Universal slide hammer

- Extra heavy and solid execution
- For universal use for automobiles + trucks
- Enormous impact delivery of up to 11 tonnes
- With 6 kg impact weight
- Includes 3 kg additional weight
- With M 20 x 1.5 mm connection thread
- Additional weights can be screwed together
- Special steel



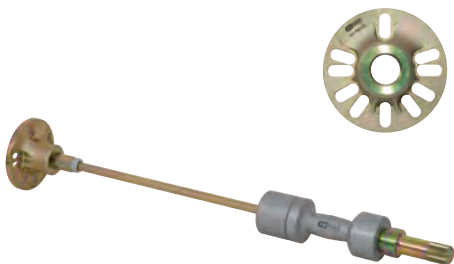
700.1415	L mm	Weight
	850.0	12.00

accessories:

700.1411	Wheel hub/drive flange dismatling tool	2.55
700.1421	Adaptor ET UN 1.1/2" x IT M20 x 1.5	0.72
700.1423	Adaptor for double hook	0.27
700.1424	Universal hook M20 x 1.5 for ball joints + car body	2.40
700.1425	Double hook	0.75
700.1428	Adaptor ET UN 1.1/2" x IT M16 x 2.0	0.72
700.1430	Adaptor ET UN 1.1/2" x IT M16 x 1,5	0.72
152.1056	Single screw adaptor AG M17 x 1	0.24

Universal wheel hub extractor set

- Extra heavy and solid execution
- For the extension of the wheel hub
- Ideal for passenger cars and small vans
- Enormous impact delivery of up to 11 t
- With 6 kg impact weight
- Includes 3 kg additional weight
- With M 20 x 1.5 mm connection thread
- Weights variably attachable and removable
- Special steel



	Rim diameter Ø mm	Bolt Ø mm	mm	L mm	kg
700.1420	98-138	max. M14	AG M20x1,5	930.0	15.27

consists of:

		kg
700.1411	Wheel hub/drive flange dismantling tool	2.55
700.1415	Universal slide hammer 6 + 3 kg, 850mm	12.00
700.1421	Adaptor ET UN 1.1/2" x IT M20 x 1.5	0.72

Wheel hub and bearing dismantling set

- Special tool for expressing the joint hubs or drawing off of the wheel hub
- Massive tool, made out of a one piece
- Special steel



		kg
700.1410	7 pcs Wheel hub and bearing dismantling set	4.80

consists of:

		kg
700.1411	Wheel hub/drive flange dismantling tool	2550
700.1400-1	Hydraulic spindle with centering point - Ag 1.1/2" x 16 G	1344
700.1412	Reception ring set, 5 pcs.	150



Wheel hub and bearing extractor supplement set

- By means of this supplement assortment wheel hubs with a hub alliance of more than Ø 75 mm can be correctly dismantled
- The wheel hub- and joint cover dismantling flange is through long thread bolts and Distance sheath is a slight distance away so the hub alliance can be placed
- Special bevelled edge which the hub can easily be replaced with contamination to the wheel hub housings
- Includes wall holder



		kg
700.1435	21 pcs Wheel hub and bearing extractor supplement set	2.88

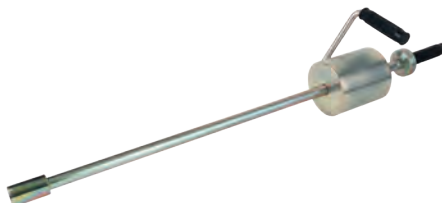
consists of:

		kg
700.1436	Wall holder for supplement set	600
700.1437	Spacer sleeve, length 40 mm	115
700.1438	Threaded bolt M12 x 1.5 mm, length 80 mm	90
700.1439	Threaded bolt M14 x 1.5 mm, length 40 mm	90
700.1440	Threaded bolt M14 x 1.5 mm, length 80 mm	90

WHEEL HUB TOOL SYSTEM PP II

Impact hammer

- Ergonomic handle
- Ideal for use alongside the adapter (440.0119) and the drive shaft press out device set (440.0115) or the wheel hub disassembly set (440.0110)



	Connection thread mm	Impact weight kg	kg
440.0080	M18	5.20	7.60

Adapter for impact hammer

- Ideally used for adapting the drive shaft press out device set (440.0115) and the impact hammer (440.0080)
- Special steel

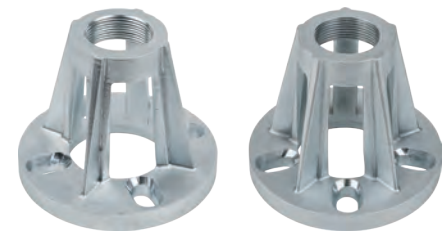


	Connection thread mm	kg
440.0119	M18	430

Drive shaft press out device set, 4 and 5 hole

- Ideally suited to pressing out rusty and stuck drive shafts
- For all passenger cars and transporters with 4 and 5 hole hubs
- For hole diameters up to 120 mm
- Optimal for the disassembly of the wheel hub with a hydraulic cylinder or adapter (440.0119) and the impact hammer (440.0080)
- No damage to the drive shaft or other parts
- Secure and easy to use
- Minimum work time
- Special steel

Recommended hydraulic cylinder: 16 t (4400005) and 22 t (440.0010)



			kg
440.0115	2 pcs	Drive shaft press out device set, 4 and 5 hole	4.52

consists of:

		kg
440.0116	Drive shaft 4 hole, hole 98-120 mm	2.28
440.0117	Drive shaft 5 hole, hole 100-120 mm	2.24

Wheel hub disassembly set

- Ideally suited to the disassembly of the wheel hub with impact hammer (440.0080)
- Special steel



		kg	
440.0110	6 pcs	Wheel hub disassembly set	640

consists of:

		kg
440.0076	Hub screw, Ø 32 mm	30
440.0077	Hub screw, Ø 40 mm	70
440.0078	Hub screw, Ø 45 mm	100
440.0079	Hub screw, Ø 52 mm	130
440.0007	Collar nut, M18	80
440.0118	Pressure rod, M18, L = 150 mm	230

WHEEL HUB TOOL SYSTEM PP III

Wheel hub impact puller

- Suitable for removing 4 and 5 hole wheel hubs
- Holes from 100 to 150 mm
- With 1.2 kg impact force
- Optimal grip with plastic handle
- Ideally used when replacing wheel bearings
- Simple handling
- Special steel



	Rim diameter Ø mm	Bolt Ø mm	Hammer Ø mm	Slide rail Ø mm	Adaptor thread mm	kg
670.0001	100-150	max. 14	60	60	M16 x 15	3.70

Universal wheel bearing puller and drive shaft puller, hydraulic

- Special tool for expressing the joint hubs or drawing off of the wheel hub
- Massive tool, made out of a one piece
- Special steel



			kg
700.1400	11 pcs	Universal wheel bearing puller and drive shaft puller, hydraulic	9.34

consists of:

			kg
700.1400-1	Hydraulic spindle with centering point - Ag 1.1/2" x 16 G	1344	
700.1400-2	Disc traverse 100 mm	920	
700.1400-3	Puller pull arm set, 5 pcs	500	
700.1400-4	Impact spanner, 30mm, L=200mm	935	
700.1400-5	Impact spindle	2015	
700.1400-7	Extension, small	60	

Universal wheel hub extractor set

- For bolt circle diameter up to 250 mm
- Clamp foot hole for bolts 14 mm, 18 mm + 22 mm
- Special steel



			kg
670.0013	5 pcs	Universal wheel hub extractor set	3.60

Universal wheel hub extractor set

- For bolt circle diameter up to 250 mm
- Clamp foot hole for bolts 14 mm, 18 mm + 22 mm
- Special steel



			kg
670.0014	6 pcs	Universal wheel hub extractor set	4.10

Universal wheel hub extractor set

- For bolt circle diameter up to 250 mm
- Clamp foot hole for bolts 14 mm, 18 mm + 22 mm
- Special steel



			kg
670.0015	7 pcs	Universal wheel hub extractor set	4.60

BEARING RING TOOL

Universal bearing ring puller 2 arm with clamping yoke

- Clamp compresses hooks firmly
- Prevents slippage
- Pressure peak centers itself optimally in the cone of the hub boring
- Extremely robust spindle with inductively hardened thread
- Special steel



A	B	max	mm	mm	D	E	F	G	kg	
mm	mm	t			mm	mm	mm	mm		
700.1260	90	100	1,2	M16 x 150	17	6,5	8,5	22,5	27,1	1,76

Bearing ring puller 3-arm with clamping cone

- Ideally suited to the disassembly for the bearing internal shell
- With conical tension screw for proportional tension force distribution
- Self-centring jaw puller
- Central adjustment screw for different radii
- Ideal for confined spaces
- Extremely robust spindle with inductively hardened thread
- Special steel
- In durable plastic storage case



A	B	mm	mm	D	E	F	G	kg	
mm	mm	mm	mm	mm	mm	mm	mm		
700.1270	10-125	96	21	M20x1,5 x 235	0,6	6	22	35	2,70

Bearing ring lever

- For removing tight fitting bearing housings
- Ideally suited for the external rings of the split cone roll bearings
- Conventional tools are no longer required
- Rimed handle for better control
- Universal applications
- Special steel



		L	kg
		mm	
450.0030		300.0	1.13
450.0031		500.0	1.89

PLIERS FOR SECURING RINGS

Securing ring tool set

- For assembly and disassembly of the securing rings on wheel bearings
- Strengthens the adjusting screw with 1/4" ratchet
- Simple handling
- Ideal for passenger cars and transporters
- Very easy to replace the stud
- Special steel



			kg
440.0340	7 pcs	Securing ring tool set	770

consists of:

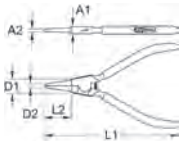
			kg
440.0344	Securing ring tool	740	
440.0341	Replacement pins, Ø 2.5 mm, 2 pcs.	10	
440.0342	Replacement pins, Ø 3.0 mm, 2 pcs.	10	
440.0343	Replacement pins, Ø 3.5 mm, 2 pcs.	10	



1
2
3
4
5
6
7
8
9
10
11
12
13
14
15
16
17
18
19
20
21
22
23
24
25
26

Circlip pliers for external circlips

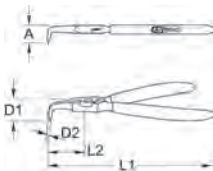
- In accordance to DIN 5254
- Slip inhibiting machined precision tips
- Durable, straight design
- Self closing
- With rubber grip
- Power version
- Die forged
- Chrome vanadium



	mm	A1 mm	A2 mm	D1 mm	D2 mm	L1 mm	L2 mm	g
119.2051	10,0 - 25,0	8,0	1,0	13,5	3,5	135,0	30,0	80
119.2056	19,0 - 60,0	9,0	1,5	15,0	4,5	175,0	40,0	150
119.2061	40,0 - 100,0	10,0	2,5	20,0	6,0	230,0	50,0	250

Circlip pliers for external circlips, angled

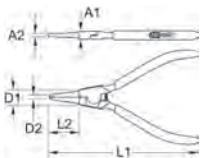
- In accordance to DIN 5256
- Slip inhibiting machined precision tips
- 90° angled version
- Self closing
- With rubber grip
- Power version
- Die forged
- Chrome vanadium



	mm	A mm	D1 mm	D2 mm	L1 mm	L2 mm	g
119.2052	10,0 - 25,0	20,0	15,0	3,0	125,0	20,0	80
119.2057	19,0 - 60,0	25,0	20,0	4,5	165,0	32,0	150
119.2062	40,0 - 100,0	30,0	25,0	6,0	210,0	40,0	250

Circlip pliers for internal circlips

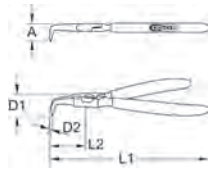
- In accordance to DIN 5254
- Slip inhibiting machined precision tips
- Durable, straight version
- With rubber grip
- Power version
- Die forged
- Chrome vanadium



	mm	A1 mm	A2 mm	D1 mm	D2 mm	L1 mm	L2 mm	g
119.2053	12,0 - 25,0	7,5	1,2	15,0	2,7	135,0	30,0	80
119.2058	19,0 - 60,0	9,5	1,6	18,0	5,0	180,0	40,0	150
119.2063	40,0 - 100,0	10,0	2,0	20,0	6,0	230,0	50,0	250

Circlip pliers for internal circlips, angled

- In accordance to DIN 5256
- Slip inhibiting machined precision tips
- 90° angled tips
- With rubber grip
- Power version
- Die forged
- Chrome vanadium



	mm	A mm	D1 mm	D2 mm	L1 mm	L2 mm	g
119.2054	12,0 - 25,0	16,5	14,5	2,5	125,0	20,0	80
119.2059	19,0 - 60,0	21,0	18,0	3,0	165,0	25,0	150
119.2064	40,0 - 100,0	25,0	20,0	5,0	210,0	35,0	250

Drive shaft securing ring teeth with serrated tips

- With PVC dipped handle
- Serrated and angular tips
- Self-closing
- For assembly and disassembly of the securing rings on drive shafts
- For external security rings
- No slipping due to the serrated tips
- Chrome molybdenum

Application range: Opel, Mercedes, Volkswagen, etc.

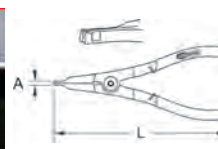


	A mm	L mm	g
115.1048	0-20	210,0	220

Drive shaft securing ring teeth with shaped tips

- With PVC dipped handle
- Shaped tips
- Self-closing
- For assembly and disassembly of the securing rings on drive shafts
- For external security rings
- No slipping due to the serrated tips
- Chrome molybdenum

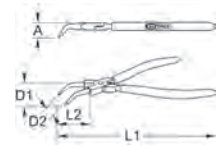
Application range: BMW, Opel, Ford, Mercedes, Volkswagen, etc.



	A mm	L mm	g
115.1049	0-20	240,0	600

Wheel bearing circlip pliers, angled

- Sturdy precision tips
- 45° angled tips
- Self-opening
- With PVC dipped handle
- For assembly and disassembly of wheel bearing securing rings
- Can be used on the front and rear axle
- For all common wheel bearing securing rings
- Chrome vanadium

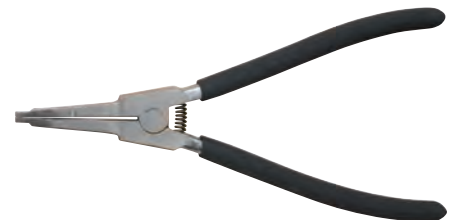
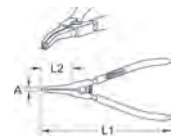
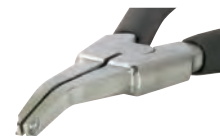


	A mm	D1 mm	D2 mm	L1 mm	L2 mm	g
500.1038	22,0	23,0	2,3	240,0	32,0	250
500.1039	22,0	23,0	3,0	300,0	46,0	490

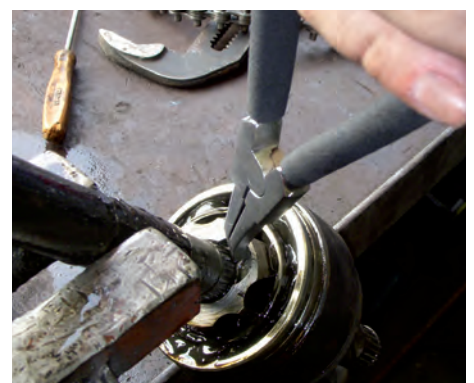
Drive shaft securing ring teeth with 30° angled tips

- 30° angled
- With PVC dipped handle
- Self-closing
- Plier head with cut out and ring stop body
- For the disassembly and assembly of nut caps without lug retainer
- Chrome vanadium

Application range: For the dismantling of the external (below joints in the exchange of the axle boots and / or the drive shaft sleeves). e.g.: for Audi, Opel, Volkswagen (Golf, T4), Fiat, Mitsubishi.



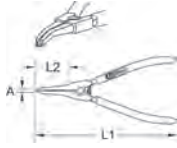
	A mm	L1 mm	L2 mm	g
115.0991	0-33	210,0	50,0	215



Drive shaft securing ring teeth with slightly angled tips

- Slightly angled
- With PVC dipped handle
- Self-closing
- Checkered plier head
- For the disassembly and assembly of drive shaft circlips without lug retainer
- Slip proof
- Chrome vanadium

Application range: For the removal of external circlips e.g. on synchronisation joints

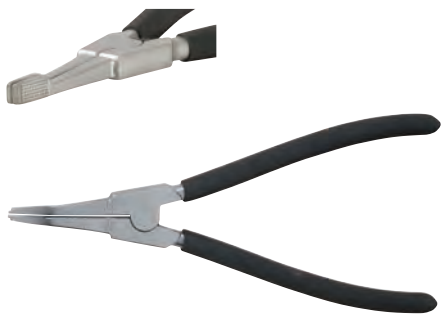
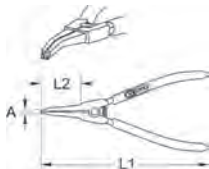


	A mm	L1 mm	L2 mm	Weight
115.0992	0-37	210.0	50.0	256

Drive shaft securing ring teeth with straight tips

- Straight form
- With PVC dipped handle
- Self-closing
- Checkered plier head
- For the disassembly and assembly of drive shaft circlips without lug retainer
- Slip proof
- Chrome vanadium

Application range: For the removal of external circlips e.g. on drive shafts, transmissions, etc



	A mm	L1 mm	L2 mm	Weight
115.0993	0-37	210.0	48.0	220

PROP SHAFT TOOL

Universal CV joint removal puller

- For correct removal of the constant velocity joint on the drive shaft
- Extra wide frame for large joints
- Anti-slip and adjustable jaws
- Ideal for swapping the rubber collar or joint
- Robust design
- Simple handling
- Special steel



	Ø mm	L mm	Width mm	Weight
150.1850	30.0	260.0	97.0	2.25

Drive shaft thread repair set

- For the repair of internal and external threads
- Ideal for drive shafts, lambda probes, wheel bolts, etc.
- Correct thread repair for damaged or sliced threads
- Suitable for a wide range of applications
- Drive optional with t-handle or external hexagon drive
- In durable plastic storage case



	Weight
150.1470	9 pcs Thread repair set 1.37

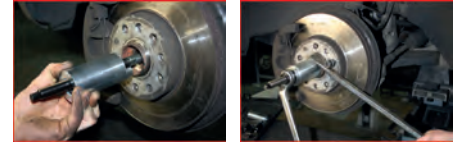
consists of:

	Description	Weight
150.1466	T bar, 8x80mm	30
150.1471	Thread chaser for M14 x 1.5 for male and female threads	150
150.1472	Thread chaser for M16 x 1.5 for male and female threads	80
150.1473	Thread chaser for M18 x 1.5 for male and female threads	90
150.1474	Thread chaser for M20 x 1.5 for male and female threads	120
150.1475	Thread chaser for M22 x 1.5 for male and female threads	150
150.1476	Thread chaser for M24 x 1.5 for male and female threads	170
150.1477	Thread chaser for M27 x 2.0 for male and female threads	180
150.1478	Thread chaser for M28 x 1.5 for male and female threads	200

Drive shaft insertion tool set

- Ideally suited to pulling in the drive shaft to the wheel hub
- Pulling tool with hardened spindle
- Includes 10 pulling sleeves with various threads
- Robust design
- Simple handling
- Special steel
- In durable plastic storage case

Application range: BMW, Mercedes, Porsche, Volkswagen, Audi, etc.



	Weight
150.2750	16 pcs Drive shaft insertion tool set 3.02

consists of:

	Description	Weight
150.2751	Pulling sleeve, M18 x 1.5 mm	48
150.2752	Pulling sleeve, M16 x 1.5 (Subaru)	34
150.2753	Pulling sleeve, M20 x 1.5 (Volkswagen, Porsche)	38
150.2754	Pulling sleeve, M22 x 1.5 (BMW E30, E46)	74
150.2755	Pulling sleeve, M24 x 1.5 (BMW E34, Mercedes W203)	87
150.2756	Pulling sleeve, M27 x 1.5 (BMW E32, E34, E39, E38, X5)	114
150.2757	Pulling sleeve, M30 x 1.5 (BMW 34)	210
150.2758	Pulling sleeve, M20 x 1.0	41
150.2759	Pulling sleeve, M20 x 1.25	36
150.2771	Pulling sleeve, M22 x 1.0	70
150.2772	Spindle with press nut, M16 x 2.0, 230 mm	240
150.2773	Bolts, M14 x 1.5, 45 mm	32
150.2774	Bush, Ø 39 mm, 80 mm	348
150.2775	Bush, Ø 49.9 mm, 110 mm	714
150.2776	Screw, M14 x 1.5, 80 mm	95
150.2777	Screw, M16 x 1.5, 80 mm	109

Special drive shaft impact socket, long

- 12 point
- Internal square to DIN 3120 / ISO 1174 with ball reception
- For use in a 1/2" impact wrench
- For machinery usage
- Phosphate finish
- Chrome molybdenum

Application range: Drive shafts, flange shafts, fuel injectors, Mercedes Benz Truck Transmissions G2/24/26, Mercedes Benz Actros, etc.



	mm	D mm	L mm	Weight
150.1703	27,0	40,5	85,0	350
150.1705	30,0	42,0	85,0	450
150.1706	32,0	44,0	85,0	490
150.1704	34,0	46,0	85,0	430
150.1707	36,0	50,0	85,0	520

Special drive shaft bit socket

- Extremely robust 1/2" sockets, for use with 1/2" impact wrench
- Length: 43 mm
- Phosphate finish
- Chrome molybdenum

Application e.g.: Brake pads, brake disks, drive shaft connections etc.



	mm	Total length mm	kg
150.1708	14	43.0	320
150.1709	17	43.0	340
150.1710	19	43.0	360

Drive shaft special socket

- 6 point
- To operate the drive shaft center bolt
- Internal square to DIN 3120 / ISO 1174 with ball reception
- Very robust execution
- Special steel

Application range: Land Rover + Range Rover



	mm	D mm	L mm	kg
150.1719	52,0	70,0	77,0	210

Special socket, long

- 12 point
- For Prop shafts, transmission flange shafts, fuel injectors etc
- Internal square to DIN 3120 / ISO 1174 with ball reception
- Very robust execution
- Special steel

Application range: Mercedes Benz Truck Transmissions G2/24/26, Mercedes Benz Actros, etc.



	mm	D mm	L mm	kg
150.1711	33,0	44,5	85,0	490

Drive shaft impact socket

- 12 point
- Internal square to DIN 3120 / ISO 1174 with ball reception
- Very robust execution
- To operate the drive shaft center bolt
- Special steel



	mm	D mm	L mm	kg
150.1702	24,0	34,0	51,5	370

Special prop shaft impact socket set

- For loosening and tightening screws on drive shafts
- Internal square to DIN 3121 / ISO 1174 with ball reception
- Very robust execution
- Special steel
- Includes storage rail



		kg
150.1750	8 pcs Special prop shaft impact socket set	4,20

consists of:

		kg
150.1703	Special socket 12pt, 1/2", 27mm	350
150.1704	Special socket 12pt, 1/2", 34mm	430
150.1705	Special socket 12pt, 1/2", 30mm	450
150.1706	Special socket 12pt, 1/2", 32mm	490
150.1707	Special socket 12pt, 1/2", 36mm	520
150.1708	Special bit socket hex, 1/2", 14mm	320
150.1709	Special bit socket hex, 1/2", 17mm	340
150.1710	Special bit socket hex, 1/2", 19mm	360

Drive shaft bit socket for spline (XZN®) screws

- Ideally suited to assembly and disassembly of screws on drive shaft flange (transmission side) from the wheel casing
- Internal square drive to DIN 3120/ISO 1174 with ball reception
- Extra-long execution
- With sand blasted bit insert
- Matt finish
- Chrome vanadium

Application range: Audi, Seat, Škoda, Volkswagen, etc.



		L mm	kg
150.1720	M8	800,0	580
150.1725	M10	800,0	580
150.1730	M12	800,0	580
150.1735	M14	800,0	580

Drive shaft-bit socket-set for spline (XZN®)-Screws

- Ideally suited to assembly and disassembly of screws on drive shaft flange (transmission side) from the wheel casing
- Internal square drive to DIN 3120/ISO 1174 with ball reception
- Extra-long execution
- With sand blasted bit insert
- Matt finish
- Chrome vanadium

Application range: Audi, Seat, Škoda, Volkswagen, etc.



		kg
150.1740	4 pcs M8 - M10 - M12 - M14	2,50



XXL wobble extension

- Internal square to DIN 3120/ISO 1174 with ball reception
- Wobble extension with ball lock
- 8° tilt angle to each side
- For manual operation
- Matt finish
- Chrome vanadium



	L mm	kg
911.1548	350,0	150
911.1549	600,0	260

XXL wobble extension

- Internal square to DIN 3120/ISO 1174 with ball reception
- Wobble extension with ball lock
- 8° tilt angle to each side
- For manual operation
- Matt finish
- Chrome vanadium

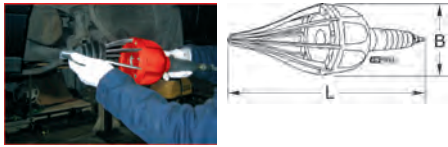


	L mm	kg
911.1487	450,0	0,75
911.1488	600,0	1,00
911.1489	750,0	1,25

AXLE BOOTS

Pneumatic assembly tool for CV joint boots

- Air exhaust through the handle rear end
- Suitable for all universal and original vehicle CV joint boots
- For CV joint boots diameter from 20 - 120 mm
- Expanding of the joint arms through pneumatic air
- Air pressure is regulated through a button
- No additional lubricant necessary
- Cold insulated handle
- Includes 1/4" coupling connector
- Ultra light robust housing from special plastic



Technical data:

Max. expansion diameter: 25 - 115 mm
 Operating pressure: max. 8 bar
 Min. tube diameter: 3/8" - 10 mm
 Connection thread: 1/4"PT

	B mm	L mm	kg
515.3100	200.0	490.0	3.50

Universal CV joint boot kit, small, crimping 23-30 mm, joint 70-105 mm

- For almost all car types
- Low storage costs and fast availability due to the versatility
- Quick and easy installation
- Exchange directly on the vehicle is possible without disassembling the prop shaft
- Can be used with mounting cones or pneumatic fitting tool 515.3100
- Neoprene joint boots with a longer life
- With a large grip area for wide clamps
- Includes stainless steel clamps and grease



Technical data:

Suitable for crimping: 23.0 - 30.0 mm
 Suitable for joints: 70.0 - 105.0 mm
 Temperature constancy: -40°C - +110°C

		kg
515.3115	Universal CV joint boot kit, small, crimping 23-30 mm, joint 70-105 mm	240

Universal CV joint boot kit, large, crimping 28-40 mm, joint 80-125 mm

- For almost all car types with larger diameter as vans
- Low storage costs and fast availability due to the versatility
- Quick and easy installation
- Exchange directly on the vehicle is possible without disassembling the prop shaft
- Can be used with mounting cones or pneumatic fitting tool 515.3100
- Neoprene joint boots with a longer life
- With a large grip area for wide clamps
- Includes stainless steel clamps and grease



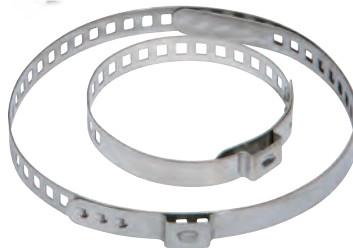
Technical data:

Suitable for crimping: 28.0 - 40.0 mm
 Suitable for joints: 80.0 - 125.0 mm
 Temperature constancy: -40°C - +110°C

		kg
515.3120	Universal CV joint boot kit, large, crimping 28-40 mm, joint 80-125 mm	360

Stainless steel band

- For CV joint boots
- Sizes adjustable
- Stainless steel

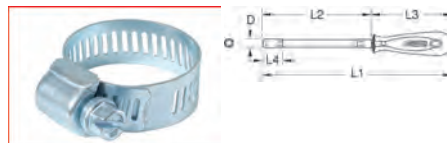


	Ø mm	Content	kg
515.3170	19,0-50,0	100	600
515.3175	40,0-120,0	100	1200

HOSE CLAMP TOOL

ERGOTORQUE® socket screwdriver

- 6 point
- Flexible
- Limited torque
- Double spiral shaft
- Plastic protective coating
- With hanging hole
- Chrome vanadium



	mm	D mm	L1 mm	L2 mm	L3 mm	L4 mm	kg
911.1126	6	10.8	259.0	150.0	109.0	9.3	155
911.1127	7	11.7	259.0	150.0	109.0	10.0	155
911.1128	8	11.9	259.0	150.0	109.0	10.0	155
911.1125	10	12.5	279.0	170.0	109.0	14.3	170

ERGOTORQUEplus® socket screwdriver, extra long

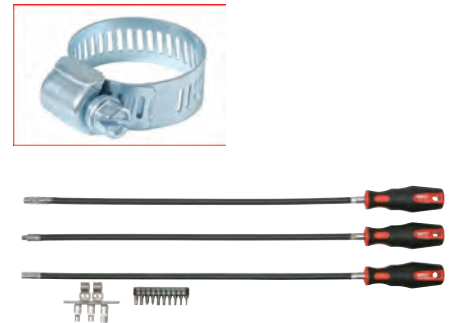
- 6 point
- Flexible
- Limited torque
- Double spiral shaft
- Plastic protective coating
- Two component handle
- With hanging hole
- Chrome vanadium



	mm	D mm	L1 mm	L2 mm	L3 mm	L4 mm	kg
911.1175	5	11.9	614.0	114.0	614.0	8.9	270
911.1176	6	10.9	614.0	114.0	614.0	11.3	280
911.1177	7	11.7	614.0	114.0	614.0	11.3	280
911.1178	8	11.7	614.0	114.0	614.0	11.3	280

ERGOTORQUE® screwdriver set

- Flexible blade with double spiral shaft
- Limited torque
- Plastic protective coating
- Two component handle
- With hanging hole
- Contains also the most current 1/4" bits and sockets
- In display box



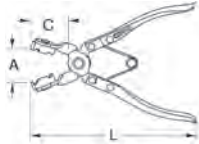
		kg
911.1180	16 pcs ERGOTORQUE® screwdriver set	1.30

1 x		1/4"
1 x		1/4"
1 x		7 mm
3 x		5 - 6 - 8 mm
2 x		5.5 - 6.5 mm
2 x		PH1 - PH2
6 x		T10 - T15 - T20 - T25 - T27 - T30



Hose clamp pliers

- With moveable jaws
- 45° angled head
- Suitable for the correct assembly and disassembly of Click, Click-R and Cobra clamps
- Also suitable for self-tensioning hose clamps with flat 3 pinch ends
- Suitable for narrow spaces
- Chrome molybdenum

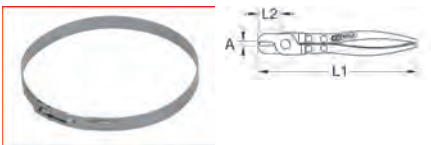


	A mm	C mm	L mm	Weight
115.1057	0-30	45.0	200.0	180



Hose clamp pliers, ear type

- Knurled handle
- To the dismantling and assembly of "ear type" hose clamp
- For connections on axle boots, coolers and fuel hoses
- Universal usage
- Chrome molybdenum



	A mm	L1 mm	L2 mm	Weight
115.1039	0-60	230.0	25.0	320

Hose clip pliers for earless hose bands

- With PVC dipped handle
- For working of earless clamps
- Also suitable for thermoplastic axle boots
- Uniform compressing of the ear piece
- No damage to the sleeve
- With lever translation
- Nickel-plated finish
- Chrome molybdenum

Application range: Axle boots for Audi, BMW, Chrysler, Ford, GM, Honda, Mazda, Mercedes, Nissan, Opel, Porsche, Volkswagen, etc.

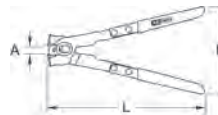


	Ø mm	Length mm	Weight
115.1210	100	248.0	330

Hose clamp pliers, ear type

- With PVC dipped handle
- For the fitting of ear clamps
- No sticking up of the ears during the press process
- Uniform compressing of the ear piece
- No damage to the sleeve
- Nickel-plated finish
- Chrome molybdenum

Application range: Axle boots, coolant and fuel hoses for Volkswagen, Audi, Opel, BMW, Mercedes, Honda, Nissan and Mazda



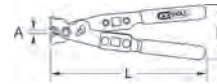
	A mm	L mm	Weight
115.1050	0-22	260.0	380



Hose clamp pliers

- With PVC dipped handle
- With 3/8" drive for use with a torque wrench
- For the fitting and clamping of ear clamps
- 1/2" 4-point recess in the handle for use with torque wrench
- Chrome molybdenum

Application range: Volkswagen, Opel, Seat, GM, Ford, Nissan, Mercedes, Mazda, Honda, Chrysler, BMW and Audi



	A mm	L mm	Weight
115.1053	0-17	240.0	540

Hose clamp pliers

- Work side
- For compressing locking hose clips
- With PVC dipped handle
- Chrome vanadium



	L mm	Weight
115.1185	240.0	335

Hose clamp pliers for torque wrench

- Black plastic handle
- 3/8" drive for use with a torque wrench
- Enables clamping and/or compressing of the hose clamps
- Suitable for the stainless steel hose clamps on drive shafts
- Robust cast steel construction



	A mm	L mm	Weight
115.1056	0-45	270.0	880

Stainless steel ball-lock cable ties

- Ideal for fastening axle boots, steering joints, etc.
- Adjustable as desired
- Stainless steel 304



	Length mm	Width mm	Content	
115.1591	200.0	4.6	100	200
115.1592	250.0	4.6	100	300
115.1593	350.0	4.6	100	400
115.1594	500.0	4.6	100	500

Clamping and cutting tool for tubing bands

- Straps for attaching to CV joint boots
- Integrated clamping and cutting device
- Suitable for prefabricated and endless band clamps up to 9.5 mm
- Special steel



	L mm	
115.1059	163.0	437

Plier for stainless steel ball-lock cable ties

- Ideal for working stainless steel cable binders
- Can be used up to a tape width of 12 mm
- Controlled tensioning and precise cutting off of the cable binder in a single step
- Tensile force is determined by the operator
- Suitable for steel, stainless steel and epoxy cable binder
- Special steel



	Length mm	
115.1590	210.0	650

Hose strap cutter, angled

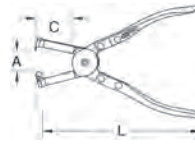
- To be sliced from earless hose clamps
- For connections on axle boots, coolers and fuel hoses
- Dipped covered handle
- Chrome vanadium



	L mm	
115.1186	220.0	345

Hose strap cutter, angled

- For cutting off earless hose clamps
- 45° angled head
- For connections on axle boots, cooler and fuel hoses
- Damage-free opening of clamps and tubing bands
- Universal usage
- Nickel-plated finish



	A mm	C mm	L mm	
115.1191	0 - 30,0	50,0	230,0	330

Automotive hose clamp pliers set

- Handle dip insulated
- Ideal for clamps low down in the engine
- Includes locking mechanism
- For self tensioning spring pipe clamps with 3 point mounting
- Self opening
- For opening and closing re/useable clic hose clamps, type Clic + Clic-R
- For difficult to reach clamps
- Special tool steel

Application area: For connecting and removing fuel, immersed ventilation, coolant, washer water and vacuum hoses, etc.

Application range: Volkswagen, Audi, Mercedes Benz, Toyota etc.



	Length mm	
115.1104	4 pcs	1,12

consists of:

115.1045	Hose clamp pliers (click type), 180mm	215
115.1042	Hose clamp pliers (recessed/slot), 220mm	210
115.1187	Hose clamp pliers with prism, 8-18mm	189
115.1065	Hose clamp pliers (dbl bowden cable), 600mm	540

Automotive hose clamp pliers set

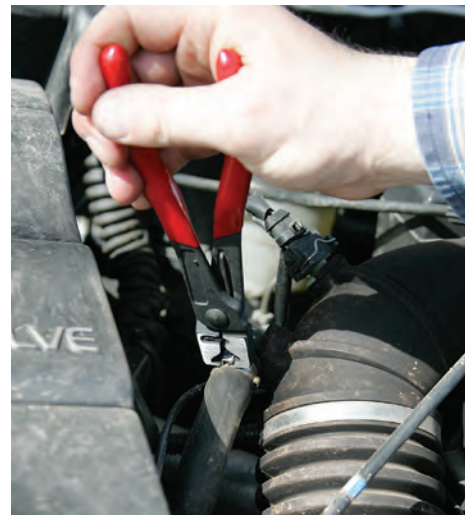
- PVC dipped handle
- For opening and closing of cobra hose clamps
- Swivel pressed jaws
- Includes locking mechanism and ratchet function
- Self opening mechanism
- For the dismantling and assembly of hose clamps
- Includes bowden cable
- Chrome molybdenum



115.1055	7 pcs	4,00

consists of:

115.1041	Hose clamp pliers (bowden cable), 650mm	470
115.1042	Hose clamp pliers (recessed/slot), 220mm	210
115.1043	Hose clamp pliers (crown profile), 220mm	240
115.1044	Hose pliers, 195mm	190
115.1045	Hose clamp pliers (click type), 180mm	215
115.1046	Hose clamp pliers (recessed/slot), 220mm	230
115.1047	Hose clamp pliers (dbl cross slot), 220mm	230



700.1701 - 700.1704



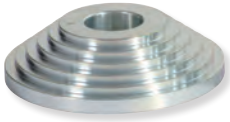
700.1800-19



700.1800-10 - 700.1800-11



700.1706 - 700.1709



700.1710 - 700.1713



700.1800-17



700.1714 - 700.1733



980.1085 - 980.1090



item	Description	700.1760 20 pcs	700.2355 22 pcs	700.1700 36 pcs	700.1735 12 pcs
Pressure nut					
700.1701	Thrust bolt, M10 with bearing		2 x	2 x	2 x
700.1702	Thrust bolt, M12	2 x	2 x	2 x	2 x
700.1703	Thrust bolt, M14 with bearing			2 x	2 x
700.1704	Thrust bolt, M16	2 x		2 x	2 x
700.1800-19	Thrust bolt TR 20 with bearing 2 pcs		1 x		
700.1800-10	Check nut M 10		1 x		
700.1800-11	Check nut M 12		1 x		
Step plate					
700.1706	Stepped plates,#1	1 x	1 x	1 x	
700.1707	Stepped plates,#2	1 x	1 x	1 x	
700.1708	Stepped plates,#3	1 x	1 x	1 x	
700.1709	Stepped plates,#4	1 x	1 x	1 x	
Spindles					
700.1710	Spindle, M10		1 x	1 x	1 x
700.1711	Spindles, M12	1 x	1 x	1 x	1 x
700.1712	Spindle, M14			1 x	1 x
700.1713	Spindles, M16	1 x		1 x	1 x
700.1800-17	Spindle TR 20, short		1 x		
Step pressure sleeve					
700.2356	Step pressure sleeve, internal Ø 14 mm, external Ø 24 mm		1 x		
700.2357	Step pressure sleeve, internal Ø 16 mm, external Ø 26 mm		1 x		
700.2358	Step pressure sleeve, internal Ø 18 mm, external Ø 28 mm		1 x		
700.2359	Step pressure sleeve, internal Ø 20 mm, external Ø 30 mm		1 x		
700.2361	Step pressure sleeve, internal Ø 22 mm, external Ø 32 mm		1 x		
700.2362	Step pressure sleeve, internal Ø 24 mm, external Ø 34 mm		1 x		
700.2363	Step pressure sleeve, internal Ø 26 mm, external Ø 36 mm		1 x		
700.2364	Step pressure sleeve, internal Ø 28 mm, external Ø 38 mm		1 x		
700.2365	Step pressure sleeve, internal Ø 30 mm, external Ø 40 mm		1 x		
700.2366	Step pressure sleeve, internal Ø 32 mm, external Ø 42 mm		1 x		
Pressure sleeve					
700.1714	Pull sleeve, internal Ø 34mm, external Ø 44mm	1 x		1 x	
700.1715	Pressure sleeve, internal Ø 36 mm, external Ø 46 mm			1 x	
700.1716	Pressure sleeve, internal Ø 38 mm, external Ø 48 mm			1 x	
700.1717	Pressure sleeve, internal Ø 40 mm, external Ø 50 mm			1 x	
700.1718	Pull sleeve, internal Ø 42mm, external Ø 52mm	1 x		1 x	
700.1719	Pull sleeve, internal Ø 44mm, external Ø 54mm	1 x		1 x	
700.1720	Pull sleeve, internal Ø 46mm, external Ø 56mm	1 x		1 x	
700.1721	Pressure sleeve, internal Ø 48 mm, external Ø 58 mm			1 x	
700.1722	Pressure sleeve, internal Ø 50 mm, external Ø 60 mm			1 x	
700.1723	Pull sleeve, internal Ø 52mm, external Ø 62mm	1 x		1 x	
700.1724	Pressure sleeve, internal Ø 54 mm, external Ø 64 mm			1 x	
700.1725	Pressure sleeve, internal Ø 56 mm, external Ø 66 mm			1 x	
700.1726	Pressure sleeve, internal Ø 58 mm, external Ø 68 mm			1 x	
700.1727	Pressure sleeve, internal Ø 60 mm, external Ø 70 mm			1 x	
700.1728	Pressure sleeve, internal Ø 62 mm, external Ø 72 mm			1 x	
700.1729	Pull sleeve, internal Ø 64mm, external Ø 74mm	1 x		1 x	
700.1730	Pressure sleeve, internal Ø 66 mm, external Ø 76 mm			1 x	
700.1731	Pressure sleeve, internal Ø 68 mm, external Ø 78 mm			1 x	
700.1732	Pull sleeve, internal Ø 70mm, external Ø 80mm	1 x		1 x	
700.1733	Pull sleeve, internal Ø 72mm, external Ø 82mm	1 x		1 x	
Thread width					
980.1090	Special thread grease	2 x			
980.1085	Special thread grease				1 x

Press and pull sleeve set

- For the disassembly and assembly of bearings
- Ideally for silent bearings, hydro bearings, bushings, ball bearing, simmerrings, etc
- Universal use for automobile, truck, municipally, country and forestry technology, etc.
- Outstanding to use also in connection with workshop press or hollow piston cylinder
- According to use application the sheaths individually can be reworked
- Pressure bearing protects against increased friction during the process
- In durable plastic storage case

Attention: the spindles need to be greased with a good lubricant for each application! Do not overload spindles, otherwise the thread lengthens and the pitch of the nut and spindle no longer match. The result: the nuts will seize up. Always check the applied force at the drive with a torque wrench!

Maximum permitted torque:

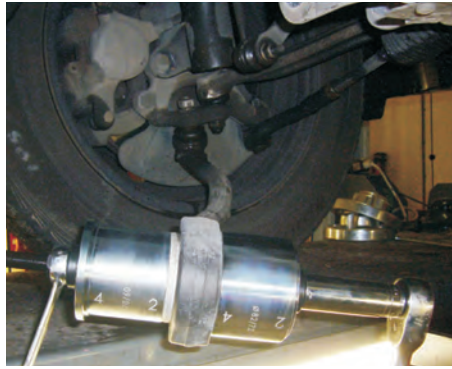
Spindle M10x1,5 60 Nm
Spindle M12x1,5 100 Nm



700.2355	22 pcs Press and pull sleeve set	8.74

consists of:

700.1701	Thrust bolt, M10 with bearing	125
700.1702	Thrust bolt, M12	124
700.1706	Stepped plates,#1	350
700.1707	Stepped plates,#2	390
700.1708	Stepped plates,#3	420
700.1709	Stepped plates,#4	450
700.1710	Spindle, M10	170
700.1711	Spindles, M12	253
700.1800-10	Check nut M 10	350
700.1800-11	Check nut M 12	350
700.1800-17	Spindle TR 20, short	350
700.1800-19	Thrust bolt TR 20 with bearing 2 pcs	350
700.2356	Step pressure sleeve, internal Ø 14 mm, external Ø 24 mm	260
700.2357	Step pressure sleeve, internal Ø 16 mm, external Ø 26 mm	280
700.2358	Step pressure sleeve, internal Ø 18 mm, external Ø 28 mm	300
700.2359	Step pressure sleeve, internal Ø 20 mm, external Ø 30 mm	320
700.2361	Step pressure sleeve, internal Ø 22 mm, external Ø 32 mm	360
700.2362	Step pressure sleeve, internal Ø 24 mm, external Ø 34 mm	380
700.2363	Step pressure sleeve, internal Ø 26 mm, external Ø 36 mm	400
700.2364	Step pressure sleeve, internal Ø 28 mm, external Ø 38 mm	420
700.2365	Step pressure sleeve, internal Ø 30 mm, external Ø 40 mm	440
700.2366	Step pressure sleeve, internal Ø 32 mm, external Ø 42 mm	460



Press and pull sleeve set BASIC

- For the disassembly and assembly of bearings
- Ideally for silent bearings, hydro bearings, bushings, ball bearing, simmerrings, etc
- Universal use for automobile, truck, municipally, country and forestry technology, etc.
- Outstanding to use also in connection with workshop press or hollow piston cylinder
- According to use application the sheaths individually can be reworked
- Pressure bearing protects against increased friction during the process
- In durable plastic storage case

Attention: the spindles need to be greased with a good lubricant for each application! Do not overload spindles, otherwise the thread lengthens and the pitch of the nut and spindle no longer match. The result: the nuts will seize up. Always check the applied force at the drive with a torque wrench!

Maximum permitted torque:

Spindle M10x1,5 60 Nm
Spindle M12x1,5 100 Nm
Spindle M14x1,5 180 Nm
Spindle M16x1,5 250 Nm



700.1760	20 pcs Press and pull sleeve set BASIC	8.32

consists of:

700.1702	Thrust bolt, M12	124
700.1704	Thrust bolt, M16	130
700.1706	Stepped plates,#1	350
700.1707	Stepped plates,#2	390
700.1708	Stepped plates,#3	420
700.1709	Stepped plates,#4	450
700.1711	Spindles, M12	253
700.1713	Spindles, M16	473
700.1714	Pull sleeve, internal Ø 34mm, external Ø 44mm	250
700.1718	Pull sleeve, internal Ø 42mm, external Ø 52mm	300
700.1719	Pull sleeve, internal Ø 44mm, external Ø 54mm	320
700.1720	Pull sleeve, internal Ø 46mm, external Ø 56mm	330
700.1723	Pull sleeve, internal Ø 52mm, external Ø 62mm	370
700.1729	Pull sleeve, internal Ø 64mm, external Ø 74mm	440
700.1732	Pull sleeve, internal Ø 70mm, external Ø 80mm	480
700.1733	Pull sleeve, internal Ø 72mm, external Ø 82mm	490

Press and pull sleeve set

- For the disassembly and assembly of bearings
- Ideally for silent bearings, hydro bearings, bushings, ball bearing, simmerrings, etc
- Universal use for automobile, truck, municipally, country and forestry technology, etc.
- Outstanding to use also in connection with workshop press or hollow piston cylinder
- According to use application the sheaths individually can be reworked
- Pressure bearing protects against increased friction during the process
- In durable plastic storage case

Attention: the spindles need to be greased with a good lubricant for each application! Do not overload spindles, otherwise the thread lengthens and the pitch of the nut and spindle no longer match. The result: the nuts will seize up. Always check the applied force at the drive with a torque wrench!

Maximum permitted torque:

Spindle M10x1,5 60 Nm
Spindle M12x1,5 100 Nm
Spindle M14x1,5 180 Nm
Spindle M16x1,5 250 Nm



700.1700	36 pcs Press and pull sleeve set	14.80

consists of:

700.1701	Thrust bolt, M10 with bearing	125
700.1702	Thrust bolt, M12 with bearing	124
700.1703	Thrust bolt, M14 with bearing	130
700.1704	Thrust bolt, M16 with bearing	130
700.1706	Stepped plate, #1	350
700.1707	Stepped plate, #2	390
700.1708	Stepped plate, #3	420
700.1709	Stepped plate, #4	450
700.1710	Spindle, M10	170
700.1711	Spindle, M12	253
700.1712	Spindle, M14	350
700.1713	Spindle, M16	473
700.1714	Pressure sleeve, Internal Ø: 34 mm, External Ø: 44 mm	250
700.1715	Pressure sleeve, Internal Ø: 36 mm, External Ø: 46 mm	260
700.1716	Pressure sleeve, Internal Ø: 38 mm, External Ø: 48 mm	280
700.1717	Pressure sleeve, Internal Ø: 40 mm, External Ø: 50 mm	290
700.1718	Pressure sleeve, Internal Ø: 42 mm, External Ø: 52 mm	300
700.1719	Pressure sleeve, Internal Ø: 44 mm, External Ø: 54 mm	320
700.1720	Pressure sleeve, Internal Ø: 46 mm, External Ø: 56 mm	330
700.1721	Pressure sleeve, Internal Ø: 48 mm, External Ø: 58 mm	340
700.1722	Pressure sleeve, Internal Ø: 50 mm, External Ø: 60 mm	350
700.1723	Pressure sleeve, Internal Ø: 52 mm, External Ø: 62 mm	370
700.1724	Pressure sleeve, Internal Ø: 54 mm, External Ø: 64 mm	380
700.1725	Pressure sleeve, Internal Ø: 56 mm, External Ø: 66 mm	390
700.1726	Pressure sleeve, Internal Ø: 58 mm, External Ø: 68 mm	410
700.1727	Pressure sleeve, Internal Ø: 60 mm, External Ø: 70 mm	420
700.1728	Pressure sleeve, Internal Ø: 62 mm, External Ø: 72 mm	430
700.1729	Pressure sleeve, Internal Ø: 64 mm, External Ø: 74 mm	440
700.1730	Pressure sleeve, Internal Ø: 66 mm, External Ø: 76 mm	460
700.1731	Pressure sleeve, Internal Ø: 68 mm, External Ø: 78 mm	470
700.1732	Pressure sleeve, Internal Ø: 70 mm, External Ø: 80 mm	480
700.1733	Pressure sleeve, Internal Ø: 72 mm, External Ø: 82 mm	490

Press and pull sleeve kit

- For the assembly and disassembly of bearings
- Ideally for silent bearings, hydro bearings, bushings, ball bearings, simmer rings, etc.
- Universal use for passenger cars, trucks, communal, agricultural and forest vehicles
- Outstanding to use also in connection with workshop press or hollow piston cylinder
- According to use application the sheaths individually can be reworked
- Pressure bearing protects against increased friction during the process
- In durable plastic storage case

Caution: The spindles must be greased before first use!
Overloading leads to unwanted material stresses or breakage
Always check the power settings on the drive with a torque wrench Not to be combined with other systems

Maximum allowable torque moments:
Spindle (ACME) M10 x P1.5 60 Nm
Spindle (ACME) M12 x P2.0 120 Nm
Spindle (ACME) M14 x P2.0 150 Nm
Spindle (ACME) M16 x P2.5 250 Nm



				kg
700.1550	29 pcs	Press and pull sleeve kit		17.00

consists of:

				kg
700.1550-34	Pull sleeve, internal Ø 34mm, external Ø 44mm		250	
700.1550-36	Pull sleeve, internal Ø 36mm, external Ø 46mm		260	
700.1550-38	Pull sleeve, internal Ø 38mm, external Ø 48mm		280	
700.1550-40	Pull sleeve, internal Ø 40mm, external Ø 50mm		290	
700.1550-42	Pull sleeve, internal Ø 42mm, external Ø 52mm		300	
700.1550-44	Pull sleeve, internal Ø 44mm, external Ø 54mm		320	
700.1550-46	Pull sleeve, internal Ø 46mm, external Ø 56mm		330	
700.1550-48	Pull sleeve, internal Ø 48mm, external Ø 58mm		340	
700.1550-50	Pull sleeve, internal Ø 50mm, external Ø 60mm		350	
700.1550-52	Pull sleeve, internal Ø 52mm, external Ø 62mm		360	
700.1550-54	Pull sleeve, internal Ø 54mm, external Ø 64mm		380	
700.1550-56	Pull sleeve, internal Ø 56mm, external Ø 66mm		390	
700.1550-58	Pull sleeve, internal Ø 58mm, external Ø 68mm		410	
700.1550-60	Pull sleeve, internal Ø 60mm, external Ø 70mm		420	
700.1550-62	Pull sleeve, internal Ø 62mm, external Ø 72mm		430	
700.1550-64	Pull sleeve, internal Ø 64mm, external Ø 74mm		440	
700.1550-66	Pull sleeve, internal Ø 66mm, external Ø 76mm		460	
700.1550-68	Pull sleeve, internal Ø 68mm, external Ø 78mm		470	
700.1550-70	Pull sleeve, internal Ø 70mm, external Ø 80mm		480	
700.1550-72	Pull sleeve, internal Ø 72mm, external Ø 82mm		490	
700.1550-75	Pull sleeve, internal Ø 75mm, external Ø 85mm		500	
700.1550-80	Pull sleeve, internal Ø 80mm, external Ø 90mm		520	
700.1551	Spindle M10x1.5		170	
700.1552	Spindle M12x1.75		200	
700.1553	Spindle M14x2.0		350	
700.1554	Spindle M16x2.0		380	
700.1555	Pressure adapter for step panel hgv size		350	
700.1556	Step panel adaptor with 3 holes, A+B side		350	
700.1551-01	Pressure nut for M10 x P1,5		30	
700.1551-02	Pressure nut with bearing for M10xP1,5		30	
700.1552-01	Pressure nut for M12 x P1,75		30	
700.1552-02	Pressure nut with bearing for M12xP1,75		30	
700.1553-01	Pressure nut for M14 x P2,0		30	
700.1553-02	Pressure nut with bearing for M14xP2,0		30	
700.1554-01	Pressure nut for M16 x P2,0		30	
700.1554-02	Pressure nut with bearing for M16xP2,0		30	

UNIVERSAL PRESS FRAME SYSTEM PP I

Universal press frame, 5 pcs without hydraulic spindle

- For the use in connection with the pressure and pull sleeve set 700.1700 for pressing out and pressing on of silent bearings, hydro bearings, bushings, etc.
- Enables de- and assembly directly on the vehicle
- Through the long trailing arm also especially high housings release themselves without problem on and pressing out
- Extremely robust spindle with inductively hardened thread
- Special steel



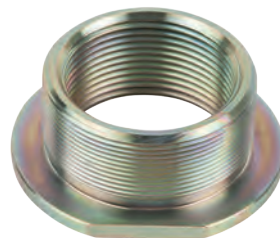
				kg
700.1751	5 pcs	Universal press frame, 5 pcs without hydraulic spindle		8.90

accessories:

				kg
700.1751-1	Connection bar 205 mm for 700.1751 (1 piece)		0.71	
700.1751-2	Connection bar 350 mm for 700.1751 (1 piece)		1.20	

Adapter for Sauer, Müller, KS PP 1

- For use of the hydraulic cylinder on Sauer, Müller, KS PP 1 with KS Tools tool
- Adapter 1.1/2" to 2.1/4"-16 UN (Sauer, Müller, KS PP 1)
- Special steel



				kg
440.0034		Adapter for Sauer, Müller, KS PP 1	230	

HYDRAULIC SUPPORT SYSTEM PP I

Hydraulic pressure spindle for press frame

- Ideal for enlarging the press frame
- Compact shape with extremely high pressure (10 t)
- Extremely high and uniform power construction
- Pre-tensioning and positioning via the outer thread on the cylinder
- For a controlled and safe removal
- The hydraulics are set into motion via a hydraulic pump (3/8" NPT)
- Extremely robust spindle with hardened thread
- Special steel



	Total length mm	Screw extension mm	Width mm	max. t	Stroke mm	Ø mm	kg
700.1785	300.0	240.0	170.0	10	200.0	54.0	5.52

Hydraulic pressure spindle for press frame

- Ideal for enlarging the press frame
- Compact shape with extremely high pressure (10 t)
- The hydraulic pistons move in a linear way which prevents rubbing on the pressure tip
- Maximum pressure with little effort
- Pre-tensioning and positioning via the outer thread on the cylinder
- For a controlled and safe removal
- The hydraulics are set in motion with the knob or the external hexagon drive
- Extremely robust spindle with hardened thread
- Special steel



	Ø mm	Screw extension mm	Total length mm	max. t	Stroke mm	Ø mm	kg
700.1400-1	AG 1.1/2"-12 UNF	92.0	260.0	10	15.0	17	1.23

HYDRAULIC SUPPORT UNIVERSAL

Hydraulic hollow piston cylinder set, 12 t with spindle

- For the assembly and disassembly of silent bearings, steering pins, track rod ends, wheel bearings, etc.
- Extremely high and uniform power construction
- Maximum pressure with little effort
- Industrial design with forged piston
- Suitable for both pressurised and tensioned uses
- Special steel



Technical data cylinder

Capacity:	12 t
Connection thread:	3/8" NPT IG
Piston:	industrial forged execution
Stroke:	42.0 mm

				kg
700.1788	2 pcs	Hydraulic hollow piston cylinder set, 12 t with spindle		3.40

consists of:

				kg
700.1789	Hydraulic hollow piston cylinders, 12 t		2.20	
700.1787	Hydraulic pull piston		1.20	

Hydraulic hollow piston cylinder set 20 t with spindle

- For the assembly and disassembly of silent bearings, steering pins, track rod ends, wheel bearings, etc.
- Extremely high and uniform power construction
- Maximum pressure with little effort
- Industrial design with forged piston
- Suitable for both pressurised and tensioned uses
- Special steel



Technical data cylinder

Capacity:	20 t
Connection thread:	3/8" NPT IG
Piston:	industrial forged execution
Stroke:	52.0

				kg
700.1786	2 pcs	Hydraulic hollow piston cylinder set 20 t with spindle		8.80

consists of:

		kg
700.1796	Hydraulic feet shaft M20 x 2.5	1.50
700.1791	Hydraulic hollow piston cylinders, 20 t	7.30

Hydraulic hand pump

- For the dismantling and assembly of silent support, steering pin, track rod ends, wheel bearings, etc.
- Extremely high and uniform power construction
- Suitable for both pressure and train uses
- Ideally suited for commercial vehicles
- Supplied without manometer and hydraulic tube
- Special steel



Technical data:

Connection thread: 3/8" NPT IG
 Hand pump: 700 bar high pressure pump
 Dimensions: 410 x 150 x 135

		kg
700.1792	Hydraulic hand pump	5.50

Hydraulics tube, 2 m including connection

- Ideally suited for commercial vehicles



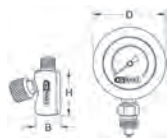
Technical data:

Connection thread: 3/8" NPT AG x 3/8" NPT AG
 Length: 2000 mm

		kg
700.1793	Hydraulics tube, 2 m including connection	1.10

Manometer

- Max. 12 bar
- 1/2" Internal and external threaded connector
- Special steel



	D mm	H mm	B mm	kg
700.1790-2	80.0	50.0	25.0	334

Hydraulic tension and pressure unit

- For the dismantling and assembly of silent support, steering pin, track rod ends, wheel bearings, etc.
- Extremely high and uniform power construction
- Industrial execution with forged piston
- Suitable for both pressure and train uses
- Ideally suited for commercial vehicles
- Special steel
- In durable plastic storage case



		kg
700.1790	4 pcs Hydraulic tension and pressure unit	15.40

consists of:

		kg
700.1791	Hydraulic hollow piston cylinder, 20 t	7.30
700.1792	Hydraulic hand pump, 700 bar	5.50
700.1793	Hydraulic hose, 2 m	1.10
700.1796	Feed shaft for hydraulic M20 x 500 mm	1.50

Pneumatic hydraulic pump

- Pneumatic working
- For simply agent press cylinders
- Safety valve for overload protection
- Includes pressure tube 1.8 meters
- Usable tank volume 2081cm³ = 2.081l
- Operating pressure max. 700 bar
- Output per stroke:
 0.8 l/min up to 200 bar
 0.1 l/min up to 700 bar



	Connection thread mm	L mm	B mm	H mm	kg
640.0020	3/8" - 18 NPT	255	130	200	11.00

C-FRAME SYSTEM PP I

C-clamp and adaptor set, short

- Very robust execution
- Valuable supplement to the pressure set and hub sheath set 700.1700
- The drive can be used alternatively mechanically or hydraulically
- Suitable for impact wrenches
- Through use of trapezoid spindle and Impact screw maximum power can be transferred (Hammer impact effect)
- Removeable spindle and clamping device with staged reception plate
- Silent bearings, sheaths, bushings etc. lets it incorporated itself in that or expanded condition on and compressed
- Trapezoid thread spindle Tr.27 with ball stored pressure tip
- Special steel



		Max span width mm	Max span depth mm	Length mm	Width mm	kg
700.1780	4 pcs	170.0	65.0	320.0	150.0	6.42

consists of:

		kg
700.1781	Uni C-clamp	5.50
700.1782	Spindle with trapezoid thread Tr.27	0.90
700.1783	C attachment set for stepped puller, 2 pcs	0.02

C-clamp and adaptor set, long

- Very robust execution
- Valuable supplement to the pressure set and hub sheath set 700.1700
- The drive can be used alternatively mechanically or hydraulically
- Suitable for impact wrenches
- Through use of trapezoid spindle and Impact screw maximum power can be transferred (Hammer impact effect)
- Removeable spindle and clamping device with staged reception plate
- Silent bearings, sheaths, bushings etc. lets it incorporated itself in that or expanded condition on and compressed
- Trapezoid thread spindle Tr.27 with ball stored pressure tip
- Special steel



		Max span width mm	Max span depth mm	Length mm	Width mm	kg
700.1755	5 pcs	245.0	95.0	380.0	180.0	11.00

consists of:

		kg
700.1754	Threaded adaptor with AG 1-1/2" x 16G and IG trapezoid thread Tr.27	0.60
700.1756	Universal C-clamp	7.00
700.1757	Spindle with trapezoid thread Tr.27, length 300 mm, drive 24 mm	2.00
700.1758	Spindle reception adaptor	0.80
700.1759	C-Clamp reception adaptor	0.60

HYDRAULIC SYSTEM PP II

Pressure and pull hydraulic cylinder set

- For the assembly and disassembly of silent bearings, steering pin bolts, wheel bearings, etc.
- Can be used in the narrowest of spaces
- With adjustable pressure rods and impact body
- With automatic piston return
- Special steel



Technical data cylinder

Capacity: 8.5 t
 Connection thread: Cejn quick coupling
 Piston: industrial forged execution
 piston-inner thread: M22
 piston-outer thread: 2.1/4"
 Stroke: 25.0 mm

		kg
440.0020	4 pcs Pressure and pull hydraulic cylinder set	2.19

consists of:

		kg
440.0021	Hydraulic cylinder, 8.5 t	1800
440.0022	Impact body with sealing ring	140
440.0023	Adjustable pressure rod M22, L = 100 mm	240
440.0024	(CEJN-) Nipple hydraulic	10

Pressure and pull hydraulic cylinder set

- For the assembly and disassembly of silent bearings, steering pins, track rod ends, wheel bearings, etc.
- Suitable for both pressurised and tensioned uses
- With impact body for screwing in
- Extremely high and uniform power construction
- Universal usage with reduction M10-M22
- With automatic piston return
- Special steel



Technical data cylinder

Capacity:	16 t
Connection thread:	Cejn quick coupling
Piston:	industrial forged execution
piston-inner thread:	M22
piston-outer thread:	2.1/4"
Stroke:	67.0 mm

kg			
440.0005	10 pcs	Pressure and pull hydraulic cylinder set	5.48

consists of:

kg			
440.0001	Hydraulic cylinder, 16 t	3380	
440.0002	Pressure axle, M24 x 3 mm, L = 129.5 mm	600	
440.0003	Pressure foot, M24 x 3 mm	90	
440.0004	Adjustable pressure rod M24, L = 92 mm	240	
440.0006	Protective ring for thread, 2.1/4"	100	
440.0007	Collar nut, M18	80	
440.0008	Pressure rod, M18/M22, L = 250 mm	440	
440.0009	(CEJN-) Nipple hydraulic	10	
440.0011	Impact body, M22 x 2.5 mm	220	
440.0012	Adjustable pressure sleeve, M24, L = 132 mm	320	

Pressure and pull hydraulic cylinder set

- For the assembly and disassembly of silent bearings, steering pins, track rod ends, wheel bearings, etc.
- Suitable for both pressurised and tensioned uses
- With impact body for screwing in
- Extremely high and uniform power construction
- Universal usage with reduction M10-M22
- With automatic piston return
- Ideally suited to transporters
- Special steel



Technical data cylinder

Capacity:	22 t
Connection thread:	Cejn quick coupling
Piston:	industrial forged execution
piston-inner thread:	M22
piston-outer thread:	2.1/4"
Stroke:	70.0 mm

kg			
440.0010	10 pcs	Pressure and pull hydraulic cylinder set	6.90

consists of:

kg			
440.0013	Hydraulic cylinder, 22 t	4640	
440.0011	Impact body, M22 x 2.5 mm	220	
440.0003	Pressure foot, M24 x 3 mm	90	
440.0004	Adjustable pressure rod M24, L = 92 mm	240	
440.0006	Protective ring for thread, 2.1/4"	100	
440.0014	Pressure axle, M24 x 3, L = 151 mm	740	
440.0016	Adjustable pressure sleeve, M24, L = 109 mm	340	
440.0007	Collar nut, M18	80	
440.0008	Pressure rod, M18/M22, L = 250 mm	440	
440.0009	(CEJN-) Nipple hydraulic	10	

Pressure and pull hydraulic cylinder set

- Optimal for universal use in car garages
- Suitable for both pressurised and tensioned uses
- Extremely high and uniform power construction
- Industrial design with forged piston
- Pressure of the hydraulic cylinders can be combined with the impact body with impact force during use
- Universal usage with reduction M10-M22
- With automatic piston return
- Ideally used with transporters and commercial vehicles
- Special steel



Technical data cylinder

Capacity:	32 t
Connection thread:	Cejn quick coupling
Piston:	industrial forged execution
piston-inner thread:	M24
piston-outer thread:	2.1/4"
Stroke:	113.0 mm

kg			
440.0025	6 pcs	Pressure and pull hydraulic cylinder set	9.35

consists of:

kg			
440.0026	Hydraulic cylinder, 32 t	8020	
440.0016	Adjustable pressure sleeve, M24, L = 109 mm	340	
440.0027	Protective ring for thread, 2.5	200	
440.0028	Collar nut, M22	100	
440.0029	Pressure rod, M22, L = 250 mm	620	
440.0009	(CEJN-) Nipple hydraulic	10	

Short-stroke hydraulic cylinder set

- For the assembly and disassembly of silent bearings, steering pin bolts, wheel bearings, etc.
- With adjustable pressure rod
- Maximum pressure with little effort
- Especially for use with press tool and press stand 440.0190 and 440.0180
- With automatic piston return
- Special steel



Technical data cylinder

Capacity:	14 t
Connection thread:	Cejn quick coupling
Piston:	industrial forged execution
piston-inner thread:	M24
piston-outer thread:	2.1/4"
Stroke:	55.0 mm

kg			
440.0015	3 pcs	Short-stroke hydraulic cylinder set	2.67

consists of:

kg			
440.0017	Hydraulic cylinder, 14 t	2420	
440.0004	Adjustable pressure rod M24, L = 92 mm	240	
440.0009	(CEJN-) Nipple hydraulic	10	

Pull rod, collar nut, adapter set

- Universal usage
- Extremely robust spindle with inductive hardened thread (M10-M22)
- Optimal use with trucks, transporters and commercial vehicle tools with corresponding reduction
- Ideally suited to hydraulic cylinders 440.0005, 440.0010 and 440.0020
- Special steel

Caution: The spindles must be greased before first use!



kg			
440.0040	13 pcs	Pull rod, collar nut, adapter set	1.98

consists of:

kg			
440.0041	Pressure rod, M10	80	
440.0042	Pressure rod, M12	180	
440.0043	Pressure rod, M14	240	
440.0008	Pressure rod, M18/M22, L = 250 mm	440	
440.0029	Pressure rod, M22, L = 250 mm	620	
440.0044	Adapter, M22-M10	50	
440.0045	Adapter, M22-M12	50	
440.0046	Adapter, M22-M14	40	
440.0047	Collar nut, M10	20	
440.0048	Collar nut, M12	20	
440.0049	Collar nut, M14	60	
440.0007	Collar nut, M18	80	
440.0028	Collar nut, M22	100	

Hydraulic foot pump set

- For simple acting press cylinder
- Safety valve for prevention against too much force
- With automatic return
- Includes hydraulic hose with quick coupling



Technical data:

Connection thread:	Cejn quick coupling
Volume:	0,75 l
Operating pressure:	700 bar
Tube length:	2200 mm

kg			
440.0060	4 pcs	Hydraulic foot pump set	7.83

consists of:

kg			
440.0057	Hydraulic hose, 2200 mm	900	
440.0058	Cejn quick coupling	200	
440.0061	Hydraulic foot pump	6720	
440.0070	Seal set	10	

Pneumatic hydraulic pump set

- Pneumatic operation
- For simple acting press cylinder
- Safety valve for prevention against too much force
- With automatic return
- Includes hydraulic hose with quick coupling



Technical data:

Connection thread: Cejin quick coupling
 Volume: 1,4 l
 Operating pressure: 700 bar
 Tube length: 2200 mm

440.0055	3 pcs	Pneumatic hydraulic pump set	6.32
----------	-------	------------------------------	------

consists of:

440.0056	Pneumatic hydraulic pump	5220
440.0057	Hydraulic hose, 2200 mm	900
440.0058	Cejin quick coupling	200

Manometer

- With Cejin quick coupling for direct coupling to all KS Tools hydraulic pumps
- With easy-to-read scale in psi and bar

Caution: The maximum pressure values for the hydraulic cylinder and given in the appropriate operator's manual



440.0063	Manometer	500
----------	-----------	-----

ADAPTER

Klann adapter

- For using the Klann hydraulic cylinder (17 t) with KS Tools tool 1.1/2" external thread
- Adapter 2.1/4"-14 UNS (Klann thread) to 1.1/2"
- Special steel



440.0038	Klann adapter	1.08
----------	---------------	------

Klann adapter

- For use with the KS Tools hydraulic cylinder (8.5-22 t) with Klann special tool
- Adapter 1.1/2" to 2.1/4"-14 UNS (Klann thread)
- Special steel



440.0036	Klann adapter	200
----------	---------------	-----

Klann adapter

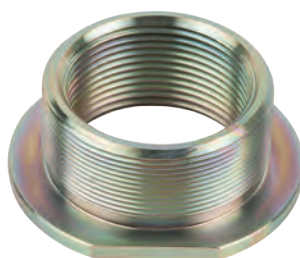
- For using the KS tools hydraulic cylinder with the Klann special tool (connection 2.3/4")
- Adapter 2.3/4"-16 UNS (Klann thread) to 2.1/2"
- Special steel



440.0049	Klann adapter	760
----------	---------------	-----

Adapter for Sauer, Müller, KS PP 1

- For use of the hydraulic cylinder on Sauer, Müller, KS PP 1 with KS Tools tool
- Adapter 1.1/2" to 2.1/4"-16 UN (Sauer, Müller, KS PP 1)
- Special steel



440.0034	Adapter for Sauer, Müller, KS PP 1	230
----------	------------------------------------	-----

Paschke adapter

- For using the Paschke hydraulic cylinder with KS Tools tool
- Adapter M68 x 2 mm (Paschke thread) to 1.1/2"
- Special steel



440.0407	Paschke adapter	110
----------	-----------------	-----

Paschke adapter

- For using the Paschke hydraulic cylinder with KS Tools tool
- Adapter M68 x 2 mm (Paschke thread) to 1.1/2"-11G
- Special steel



440.0408	Paschke adapter	330
----------	-----------------	-----

Adapter for 32 t hydraulic cylinder

- For use with hydraulic cylinder 16 t (440.0005) and 22 t (440.0010) to the 2.1/2" thread from 32 t hydraulic cylinder (440.0025)
- Adapter 1.1/2" to 2.1/2"-11 UN



440.0037	Adapter for 32 t hydraulic cylinder	570
----------	-------------------------------------	-----

PRESS STAND SYSTEM PP II

Universal press stand

- With open stand plate and adapter ring set
- Ideal for replacing ball joints and rear-axle bushes
- Can be used directly on the vehicle
- Adjustable with ball joint press sleeves from KS Tools
- For use with hydraulic cylinder
- Secure and easy to use
- Special steel

Recommended hydraulic cylinder: 14 t (440.0015), 16 t (440.0005), 22 t (440.0010)



440.0180	9 pcs	Universal press stand	5.62
----------	-------	-----------------------	------

consists of:

	X		
440.0176	1	Plate with thread	2040
440.0178	2	Support leg	440
440.0179	4	Screw M16 x 40 mm	80
440.0185	1	Adapter plate	340
440.0204	1	Plate with open side	2040

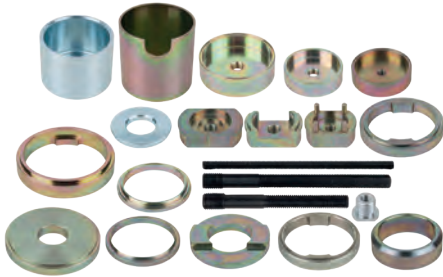
SILENT BEARING TOOL SYSTEM PP II

Silent bearing tool set for BMW rear axles

- For the assembly and disassembly of the rear axle silent bearings
- Ideal for secure bearings
- Secure and easy to use
- For use with hydraulic cylinder
- Special steel

Recommended hydraulic cylinder: 16 t (440.0005), 22 t (440.0010)

Application range: BMW E60- 65 (5 series, 6 series, 7 series), E81-E88 (1 series), E90 (3 series)



g			
440.0255	21 pcs	Silent bearing tool set for BMW rear axles	12.87

consists of:

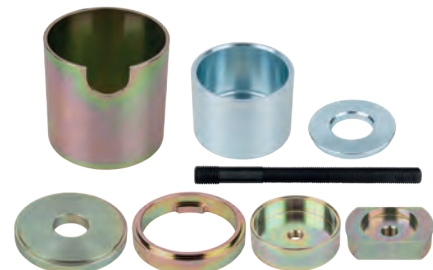
			g
440.0153	Pressure pipe Touring	1460	
440.0154	Pressure disk Touring	1310	
440.0256	Assembly disk E32/E34	740	
440.0121	Pressure sleeve	1620	
440.0254	Pressure disk	480	
440.0257	Retainer ring E32/E34	320	
440.0252	Retainer ring	660	
440.0253	Assembly disk	1040	
440.0008	Pressure rod, M18/M22, 250 mm	440	
440.0258	Pressure rod, M18/M22, 180 mm	320	
440.0259	Assembly ring	160	
440.0261	Retainer	440	
440.0262	Disk with thread	480	
440.0263	Disk with thread	380	
440.0264	Pressure disk	520	
440.0266	Retainer ring	640	
440.0267	Assembly ring	100	
440.0268	Disk with thread	740	
440.0046	Adapter, M22-M14	40	
440.0043	Pressure rod, M14, 250 mm	240	
440.0269	Retainer plate E32/E34	740	

Silent bearing tool set for BMW X5 rear axles

- For the assembly and disassembly of the rear axle silent bearings
- Ideal for secure bearings
- Simple and safe manual operation
- For use with hydraulic cylinder
- Special steel

Recommended hydraulic cylinder: 16 t (440.0005), 22 t (440.0110)

Application range: BMW X5 (E53)



g			
440.0250	8 pcs	Silent bearing tool set for BMW X5 rear axles	7.77

consists of:

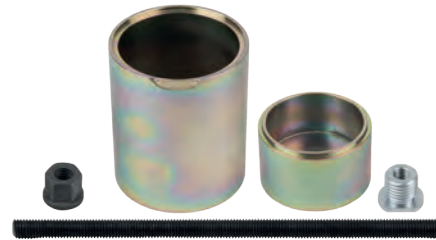
			g
440.0251	Disk with thread	760	
440.0252	Retainer ring	660	
440.0253	Assembly disk	1040	
440.0121	Pressure sleeve	1620	
440.0254	Pressure disk	480	
440.0153	Pressure pipe Touring	1460	
440.0154	Pressure disk Touring	1310	
440.0008	Pressure rod, M18/M22, 250 mm	440	

Wishbone bush set for Ford Transit, front

- For the assembly and disassembly of the rear wishbone bushes on the front wishbone
- Correct installation and removal directly on the vehicle
- Ideal for use on secure bearing bushes
- For use with hydraulic cylinder
- Secure and easy to use
- Special steel

Recommended hydraulic cylinder: 16 t (440.0005), 22 t (440.0010)

Application range: Ford Transit > 2000



g			
440.0285	5 pcs	Wishbone bush set for Ford Transit, front	1.94

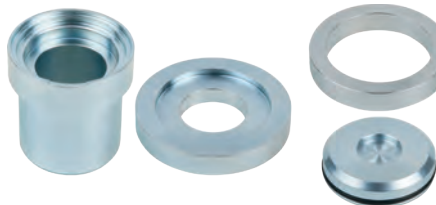
consists of:

			g
440.0286	Pressure sleeve	500	
440.0287	Pressure tube	1100	
440.0043	Pressure rod, M14, 250 mm	240	
440.0046	Adapter, M22-M14	40	
440.0049	Collar nut, M14	60	

Wishbone bush set, read for Ford/Mazda/Volvo

- For assembly and disassembly of the rear axle bushes
- For use with the universal press stand (440.0180)
- Ideal for use directly on the vehicle
- Simple handling
- Saves a lot of time
- Special steel

Application range: Ford Focus >1999, Mazda 3 >2004, Volvo V50/S40 >2004



g			
440.0225	4 pcs	Wishbone bush set, read for Ford/Mazda/Volvo	1.82

consists of:

			g
440.0226	Disassembly/assembly sleeve	800	
440.0227	Assembly disk	500	
440.0228	Retainer ring	320	
440.0229	Pressure disk	200	

Silent bearing tool set for Ford / Volvo

- For the assembly and disassembly of the rear axle silent bearings
- Ideal for secure bearings
- Required for correct installation
- Secure and easy to use
- For use with hydraulic cylinder
- Special steel

Recommended hydraulic cylinder: 14 t (440.0015), 16 t (440.0005), 22 t (440.0010)

Application range: Ford Mondeo, S-Max, Galaxy >2007, Volvo S60, S80, V60, V70, XC60, XC70 >2007



g			
440.0245	7 pcs	Silent bearing tool set for Ford / Volvo	6.76

consists of:

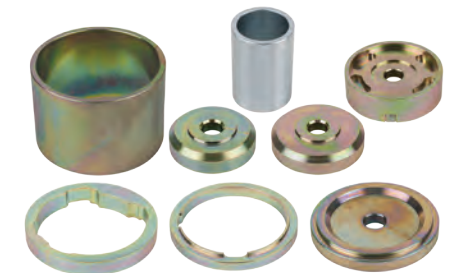
			g
X			
440.0246	1	Adapter ring	180
440.0247	1	Press frame	2460
440.0248	1	Pressure tube	1320
440.0249	1	Pressure plate	600
440.0176	1	Plate with thread	2040
440.0179	2	Screw M16 x 40 mm	80

Silent bearing tool set for Hyundai rear axles

- For the assembly and disassembly of the rear axle silent bearings
- Ideal for replacing all four bushes on the rear axle
- Work directly on the vehicle
- For use with hydraulic cylinder
- Secure and easy to use
- Special steel

Recommended hydraulic cylinder: 16 t (440.0005), 22 t (440.0010)

Application range: Hyundai Santa Fe 2006-2012



g			
440.0275	8 pcs	Silent bearing tool set for Hyundai rear axles	5.08

consists of:

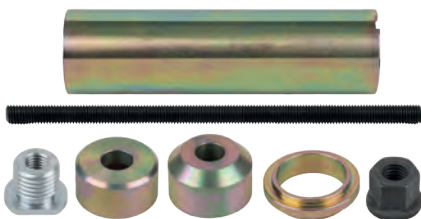
			g
440.0276	Pressure tube	960	
440.0277	Pressure disk	880	
440.0278	Disassembly disk	420	
440.0279	Pressure disk	660	
440.0281	Assembly disk	980	
440.0282	Disassembly ring	420	
440.0283	Disassembly ring	260	
440.0084	Pressure tube	500	

Steering bushes set for Mercedes, rear

- For the assembly and disassembly of the rear, lower bushes in the axle body
- Correct assembly and disassembly directly on the vehicle
- For use with hydraulic cylinder
- Secure and easy to use
- Special steel

Recommended hydraulic cylinder: 16 t (440.0005), 22 t (440.0010)

Application range: Mercedes C, E and S class



kg			
440.0270	7 pcs	Steering bushes set for Mercedes, rear	1.62

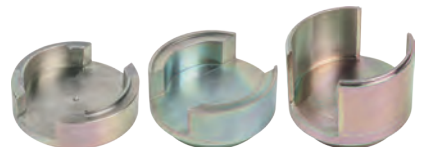
consists of:

kg			
440.0271		Disassembly ring	80
440.0272		Assembly sleeve	160
440.0273		Pressure tube	980
440.0274		Retainer ring, installation	60
440.0043		Pressure rod, M14, 250 mm	240
440.0046		Adapter, M22-M14	40
440.0049		Collar nut, M14	60

Rear axle bushes set for Renault

- Ideal for the assembly and disassembly of rear axle bushes
- For use with the universal press stand (440.0180)
- Can be used directly on the vehicle
- Simple handling
- Saves a lot of time
- Special steel

Application range: Renault Laguna 2



kg			
440.0205	3 pcs	Rear axle bushes set for Renault	2.60

consists of:

kg			
440.0206		Pressure piece	540
440.0207		Pressure piece	900
440.0208		Pressure piece	1160

Double silent bearing set, VAG

- For the assembly and disassembly of the double silent bearings on VAG
- Correct installation and removal directly on the vehicle
- Secure and easy to use
- For use with hydraulic cylinder
- Special steel

Recommended hydraulic cylinder: 16 t (440.0005) and 22 t (440.0010)

Application range: Volkswagen Caddy 2004-2010, Eos > 2006, Golf V 2003-2009, Scirocco > 2005, Jetta 2005-2010, Passat 2005-2010, Tiguan > 2007, Touran > 2003, Seat Altea > 2004, Leon > 2005, Toledo 2004-2009, Škoda Octavia 2004-2010, Audi A3 > 2005, TT 2006-2010



kg			
440.0290	3 pcs	Double silent bearing set, VAG	1.44

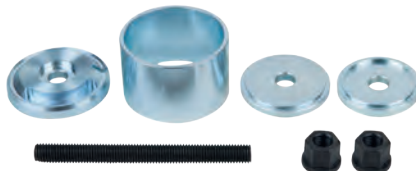
consists of:

kg			
440.0291		Pressure tube	1220
440.0292		Pressure disk	660
440.0293		Assembly pipe	560

Silent bearing set for Volkswagen/Audi/Seat/Škoda

- For the assembly and disassembly of the rear, lower bushes in the double wishbone
- Robust spindle with inductive hardened thread
- Ideal for manual use
- Secure and easy to use
- Special steel

Application range: Volkswagen Polo 9N, Fox, Audi A2 2000-2005, Seat Ibiza, Altea, Cordoba 2003-2005, Škoda Fabia 2000-2004 and similarly constructed vehicles



kg			
440.0295	7 pcs	Silent bearing set for Volkswagen/Audi/Seat/Škoda	1.46

consists of:

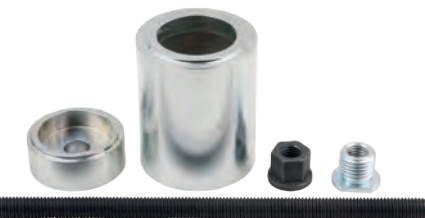
kg			
X			
440.0049	2	Collar nut, M14	60
440.0234	1	Pressure rod M14, L = 150 mm	140
440.0296	1	Disassembly/assembly disk	440
440.0297	1	Pressure tube	340
440.0298	1	Assembly disk	280
440.0299	1	Disassembly disk	200

Wishbone bushes set for Volkswagen T5, front

- For the assembly and disassembly of the rear wishbone bushes on the front wishbone
- Correct installation and removal directly on the vehicle
- Ideal for use on secure bearing bushes
- For use with hydraulic cylinder
- Secure and easy to use
- Special steel

Recommended hydraulic cylinder: 16 t (440.0005), 22 t (440.0010)

Application range: Volkswagen T5 2004-2013



kg			
440.0415	5 pcs	Wishbone bushes set for Volkswagen T5, front	1.46

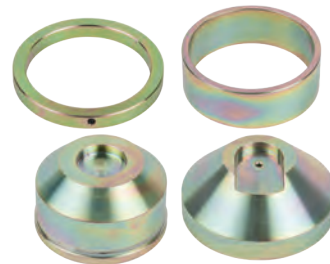
consists of:

kg			
440.0416		Pressure rod, L = 250 mm	240
440.0417		Pressure plate	340
440.0418		Sleeve	780
440.0049		Collar nut, M14	60
440.0046		Adapter, M22-M14	40

Rear axle bushes set for Volkswagen/Audi/Seat/Škoda

- For the assembly and disassembly of the rear axle bushes
- For use with the universal press stand (440.0180)
- Ideal for use directly on the vehicle
- Simple handling
- Saves a lot of time
- Special steel

Application range: Audi A3, Volkswagen Golf 4, Seat Ibiza, Škoda Fabia



kg			
440.0210	4 pcs	Rear axle bushes set for Volkswagen/Audi/Seat/Škoda	1.65

consists of:

kg			
X			
440.0213	1	Disassembly sleeve	600
440.0214	1	Disassembly ring	300
440.0216	1	Assembly sleeve	570
440.0217	1	Assembly ring	160

Universal press tool set

- For the assembly and disassembly of bearings, bushes and ball joints
- Adapter and pressure crank allow for use with the universal press stand (440.0180)
- 24 press sleeves in different sizes
- 61 various internal and external diameters between 30.5 mm and 79.7 mm
- Universal usage for passenger cars and transporters
- Excellent usage also with work bench press
- Special steel



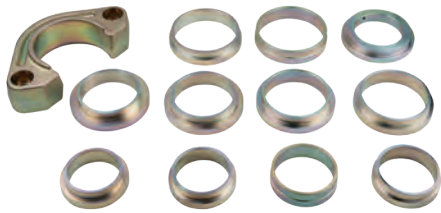
kg			
440.0300	26 pcs	Universal press tool set	9.67

consists of:

kg			
440.0348		Adapter plate	250
440.0049		Adjustable pressure rod M24 x 90 mm	280
440.0301		Press sleeve 40.7 x 42.5 x 35.2 mm	200
440.0302		Press sleeve 43.7 x 45.5 x 38.2 mm	220
440.0303		Press sleeve 46.7 x 48.5 x 41.2 mm	260
440.0304		Press sleeve 49.7 x 51.5 x 44.2 mm	280
440.0305		Press sleeve 52.7 x 54.5 x 47.2 mm	320
440.0306		Press sleeve 55.7 x 57.5 x 50.2 mm	360
440.0307		Press sleeve 58.7 x 60.5 x 53.2 mm	400
440.0308		Press sleeve 61.7 x 63.5 x 56.2 mm	440
440.0309		Press sleeve 64.7 x 66.5 x 59.2 mm	480
440.0310		Press sleeve 67.7 x 69.5 x 62.2 mm	520
440.0311		Press sleeve 70.7 x 72.5 x 65.2 mm	560
440.0312		Press sleeve 73.7 x 75.5 x 68.2 mm	600
440.0313		Press sleeve 76.7 x 78.5 x 71.2 mm	640
440.0314		Press sleeve 79.7 x 81.5 x 74.2 mm	680
440.0315		Press sleeve 82.7 x 84.5 x 77.2 mm	720
440.0316		Press sleeve 85.7 x 87.5 x 80.2 mm	760
440.0317		Press sleeve 88.7 x 90.5 x 83.2 mm	800
440.0318		Press sleeve 91.7 x 93.5 x 86.2 mm	840
440.0319		Press sleeve 94.7 x 96.5 x 89.2 mm	880
440.0320		Press sleeve 97.7 x 99.5 x 92.2 mm	920
440.0321		Press sleeve 100.7 x 102.5 x 95.2 mm	960
440.0322		Press sleeve 103.7 x 105.5 x 98.2 mm	1000
440.0323		Press sleeve 106.7 x 108.5 x 101.2 mm	1040
440.0324		Press sleeve 109.7 x 111.5 x 104.2 mm	1080

Universal press tool expansion set

- Ideal sleeve assortment for expanding the press tool set (440.0300)
- For use with the universal press stand (440.0180)
- For use on passenger cars and transporters
- 11 press rings in different sizes
- Excellent usage also with work bench press
- Optimal for bushes, bearings and ball joints
- Special steel



			kg
440.0325	12 pcs	Universal press tool expansion set	4.42

consists of:

			kg
440.0204		Plate with open side	2040
440.0326		Press ring 59 x 70 x 52.2 mm	180
440.0327		Press ring 62 x 70 x 55.5	160
440.0328		Press ring 65 x 70 x 58.2 mm	140
440.0329		Press ring 68 x 70 x 61.2 mm	120
440.0331		Press ring 71 x 90 x 64.2 mm	300
440.0332		Press ring 74 x 90 x 67.2 mm	280
440.0333		Press ring 77 x 90 x 70.2 mm	260
440.0334		Press ring 80 x 90 x 73.2 mm	240
440.0336		Press ring 84 x 90 x 77.2 mm	200
440.0337		Press ring 88 x 90 x 81.2 mm	160
440.0338		Adapter	340

SILENT BEARING TOOL SYSTEM PP III

Silent bearing set for BMW and Mini front axle

- For the assembly and disassembly of the front silent bearings (hydro bearing) in the wishbone
- Saves a lot of time since the replacement is carried out as it is
- Special steel

Application range: BMW Mini R50 Mini One, One D and Cooper from 2001-2006 and R53 Mini Cooper S from 2002-2006

Caution: The spindles must be greased before first use! Overloading leads to unwanted material stresses or breakage. Always check the power settings on the drive with a torque wrench.



			kg
700.2135	7 pcs	Silent bearing set for BMW and Mini front axle	3.40

consists of:

			kg
700.2136		Spindle	250
700.2137		Nut with bearing	160
700.2138		Pulling sleeve	608
700.2139		Bush with serrated edge	633
700.2140		Disassembly bush with thread	317
700.2141		Assembly bush with thread	391
700.2142		Assembly bush without thread	393

Silent bearing tool set for BMW rear axles

- For assembly and disassembly of the lower silent bearings on the rear axle
- No removal of the wheel mounts
- With pre-tensioning tool suitable for slit silent bearings
- For damage-free installation
- Special steel
- In durable plastic storage case

Application range: BMW E81/E82/E87/E88 and BMW E90/E91/E92/E93 silent bearings on the rear axle



			kg
700.2145	10 pcs	Silent bearing tool set for BMW rear axles	3.84

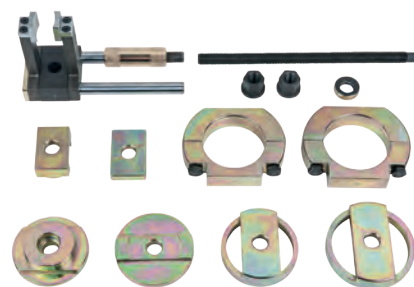
consists of:

			kg
700.2146		Spindle M12 x 1.75 mm	143
700.2147		Nut, M12 x 1.75 mm	105
700.2148		Tension wrench with t-handle	687
700.2149		Press piece 1 x 57.0 mm	468
700.2150		Press piece 2 x 45.0 mm	232
700.2151		Press piece 3 x 43.0 mm	194
700.2152		Press piece 4 x 58.0 mm	388
700.2153		Press piece 5 x 58.0 mm	420
700.2154		Press piece 6 x 54.7 mm	240
700.2155		Press piece 7 x 53.9 mm	300

Silent bearing tool set for BMW rear axles

- For assembly and disassembly of the front and rear spherical bearings
- For all rear axle supports
- For assembly in built in condition
- With pre-tensioning tool suitable for rubber bearings
- For damage-free installation and removal
- Special steel

Application range: BMW E81/E82/E87/E88 and BMW E90/E91/E92/E93 spherical bearings on the rear axle



			kg
700.2160	13 pcs	Silent bearing tool set for BMW rear axles	7.20

consists of:

			X	kg
700.2161	1	Spindle, M16 x 2.0 mm		350
700.2162	1	Ring, Ø 32.4 mm		30
700.2163	2	Nut, M16 x 2.0 mm		68
700.2164	1	Pre-tensioning tool		1928
700.2165	1	Pressure piece, 58.0 x 38.0 mm		218
700.2166	1	Pressure piece, 64.0 x 62.7 mm		198
700.2167	1	Pressure piece, 123.0 x 95.0 mm		1106
700.2168	1	Pressure piece, 128.0 x 100.0 mm		1194
700.2169	1	Pressure piece, 84.0 mm		642
700.2170	1	Pressure piece, 89.0 mm		526
700.2171	1	Pressure piece, 87.0 mm		418
700.2172	1	Pressure piece, 99.0 mm		498

Silent bearing tool set for Ford and Volvo rear wheel mounting

- For assembly and disassembly of silent bearings both on and off the vehicle
- Removes the necessity to remove the brake pipes and securing plate
- Saves a lot of time
- Special steel

Application range: Ford Galaxy from 2006-2010, Ford Mondeo from 2007-2013, Ford S-Max from 2006-2013, Volvo S60 from 2010-2013, Volvo V70 from 2007-2013

Caution: The spindles must be greased before first use! Overloading leads to unwanted material stresses or breakage. Always check the power settings on the drive with a torque wrench.



			kg
700.2210	5 pcs	Silent bearing tool set for Ford and Volvo rear wheel mounting	7.80

consists of:

			X	kg
700.2211	1	Press screw M24 with bearing		0.53
700.2212	1	Press frame		4.35
700.2213	1	Beaker for installation and removal		2.00
700.2214	1	Separator ring		0.30
700.2215	1	Step ring		0.40

Silent bearing tool set for Land Rover wishbone

- For assembly and disassembly of silent bearings both on and off the vehicle
- Minimises the normally necessary disassembly work hugely
- Removes the complete removal of the wishbone
- Saves a lot of time
- Special steel


Application range: Land Rover Discovery 3 and Range Rover Sport

Caution: The spindles must be greased before first use! Overloading leads to unwanted material stresses or breakage. Always check the power settings on the drive with a torque wrench.



			kg
700.2220	11 pcs	Silent bearing tool set for Land Rover wishbone	4.37

consists of:

		
700.2221	Spindle M16 x 1.5	45
700.2222	Press bull	750
700.2223	Assembly plate	800
700.2224	Assembly disk	584
700.2225	Press bell, large	1271
700.2182	Press nut M16	151
700.2183	Counter nut M16	51
700.2226	Half-shell pair with screws and nuts, 4 pcs	725


Silent bearing tool set for Land Rover rear axle

- For assembly and disassembly of silent bearings both on and off the vehicle
- For the upper silent bearings on the rear wheel mounting
- Saves a lot of time
- Special steel


Application range: Land Rover Discovery 3, Land Rover Discovery 4, Range Rover Sport and Land Rover L322

Caution: The spindles must be greased before first use! Overloading leads to unwanted material stresses or breakage Always check the power settings on the drive with a torque wrench



			
700.2230	5 pcs	Silent bearing tool set for Land Rover rear axle	1.19

consists of:

		
700.2201	Spindle M12 x 1.75	191
700.2232	Press bell, large	497
700.2233	Press bell, small	200
700.2202	Press nut M12	171
700.2203	Counter nut, M12 x 1.75	20


Silent bearing tool set for Land Rover rear wheel mounting

- For assembly and disassembly of silent bearings both on and off the vehicle
- For the lower silent bearings on the rear wheel mounting
- Saves a lot of time
- Special steel


Application range: Land Rover Discovery 3, Land Rover Discovery 4, Range Rover Sport and Land Rover L322

Caution: The spindles must be greased before first use! Overloading leads to unwanted material stresses or breakage Always check the power settings on the drive with a torque wrench



			
700.2240	6 pcs	Silent bearing tool set for Land Rover rear wheel mounting	1.77

consists of:

		
700.2201	Spindle M12 x 1.75	191
700.2242	Bush slit	700
700.2243	Press bell, large	340
700.2244	Press bell, small	235
700.2202	Press nut M12	171
700.2203	Counter nut, M12 x 1.75	20


Silent bearing tool set for Mitsubishi Lancer wishbone

- For assembly and disassembly of silent bearings both on and off the vehicle
- Removes work on ball joints
- Saves a lot of time
- Special steel


Application range: Mitsubishi Lancer EVO 4/5/6 from 1996-2001

Caution: The spindles must be greased before first use! Overloading leads to unwanted material stresses or breakage Always check the power settings on the drive with a torque wrench



			
700.2200	5 pcs	Silent bearing tool set for Mitsubishi Lancer wishbone	975

consists of:


		
700.2201	Spindle M12 x 1.75	191
700.2202	Press nut M12	171
700.2203	Counter nut, M12 x 1.75	20
700.2204	Pressure sleeve	505
700.2205	Pressure piece	88

Silent bearing cutting set for Nissan, Renault and Opel front axles


- For the disassembly of silent bearings on and off the vehicle
- Simple removal of the outer ring of the silent bearing
- Due to the construction of the help frame and the silent bearings with heightened external ring of the silent bearing must be cut
- Once the external ring has been cut the rest of the silent bearing can be pressed in with 700.2180
- Removes removal of the help frame
- Saves a lot of time since the replacement is carried out built in
- Special steel

Application range: Renault Trafic, Nissan Primaster, Opel Vivaro 2001-2013



			
700.2190	4 pcs	Silent bearing cutting set for Nissan, Renault and Opel front axles	393

consists of:

		
700.2191	Hole saw attachment bracket	53
700.2192	Hole saw Ø 54 mm	129
700.2193	Conical brass silent bearing guide	91
700.2194	1/4" centring shank	120


Silent bearing tool set for Nissan, Renault and Opel front axle

- For assembly and disassembly of silent bearings both on and off the vehicle
- Removes the removal of the help frame in connection with 700.1290
- Saves a lot of time since the replacement is carried out built in
- Special steel


Application range: Renault Trafic, Nissan Primaster, Opel Vivaro 2001 – 2013

Caution: The spindles must be greased before first use! Overloading leads to unwanted material stresses or breakage Always check the power settings on the drive with a torque wrench



			
700.2180	7 pcs	Silent bearing tool set for Nissan, Renault and Opel front axle	2.42

consists of:


		
700.2181	Spindle M16	280
700.2182	Press nut M16	151
700.2183	Counter nut M16	51
700.2184	Press sleeve, large	847
700.2185	Pressure plate	330
700.2186	Conical press sleeve	220
700.2187	Press sleeve, small	543

Silent bearing tool set for Audi and Volkswagen

- For the assembly and disassembly of silent bearings, hydro and plastic bearings
- Can be used directly on the vehicle
- Saves a lot of time
- For use with the universal press frame 700.1751 and spindle
- Special steel

Application range: Audi A2, A3, Volkswagen Golf 4



			
700.2340	9 pcs	Silent bearing tool set for Audi and Volkswagen	4.20

consists of:

700.2341	Counter bearing with recess	718
700.2342	Separating device	1880
700.2343	Internal hexagon screw M12 x 50, 2 pcs.	54
700.2344	Press bolts with nut M12 x 200	200
700.2347	Pressure piece	639
700.2348	Press piece with opening	520
700.2349	Press piece for hydro bearings	620
700.2350	Press piece for plastic bearings	652

Silent bearing tool set for VAG Front axle consoles

- With this tool the plastic silent bearing of the front axle console can be correctly and quickly dismantled and mounted
- By means of the specially pressure piece the plastic housing is safely accepted by what means a damage-free assembly is enabled
- With this the tool it can incorporated the condition and can the costly correction of the axle alignment and the dismantling of often strongly console-reinforcements-screws that can be corroded
- Simple handling
- Enables use directly on the vehicle
- High time savings
- Adapter with protective axle-pressure thrust bearing -spindle
- Axle alignment can be omitted
- In durable plastic storage case

Application range: Volkswagen Polo (9N), Seat Ibiza IV, Cordoba (from model 2002), Altea, Skoda Fabia, Roomster, Audi A2 + structurally identical group vehicles



700.1650	8 pcs Silent bearing tool set for VAG Front axle consoles	3.20

consists of:

700.1651	Working spindle M10x1,25, 180 mm	170
700.1652	Spindle extension M10x1,25, 200 mm	140
700.1653	Special nut with cone shaft 45mm	80
700.1654	Special adaptor with thrust bearing	160
700.1655	Thrust plate stepped Ø74mm, installation	390
700.1656	Special thrust piece Ø74mm, installation	1070
700.1657	Distance piece with knurled, extension	240
700.1658	Distance piece with collar, extension	240



Silent bearing tool set for VAG rear axles

- For assembly and disassembly of bearings both on and off the vehicle
- For the replacement of silent bearings from the wheel bearing housing, axle guide/trailing arm, wishbone lower/internal as built in, push rod and the upper wishbone not built-in
- For use alongside mechanical spindle
- Special steel
- In durable plastic storage case

Application range: Volkswagen Golf 5 Plus/Variant/4 Motion from 2005-2012; Volkswagen Scirocco 2009-2012; Volkswagen Beetle >2012; Volkswagen EOS 2006-2012; Seat Altea from 2004-2012; Seat Leon from 2006-2012; Seat Toledo from 2005-2009; Audi A3/S3 from 2004-2012; Audi TT/TTS Coupe/Roadster from 2007-2012

Caution: The spindles must be greased before first use! Overloading leads to unwanted material stresses or breakage Always check the power settings on the drive with a torque wrench



700.2110	18 pcs Silent bearing tool set for VAG rear axles	4.24

consists of:

700.2111	Pressure piece, 35.7 mm	60
700.2112	Pressure piece, 37.6 mm	160
700.2113	Pressure piece, 37.6 mm	80
700.2114	Pressure piece, 39.5 mm	100
700.2115	Pressure piece, 41.3 mm	100
700.2116	Pressure piece, 42.0 mm	60
700.2117	Pressure piece, 49.0 mm	300
700.2118	Pressure piece, 49.9 mm	60
700.2119	Pressure piece, 50.0 mm	220
700.2120	Pressure piece, 59.4 mm	220
700.2121	Pressure piece, 67.0 mm	300
700.2122	Pressure piece, 80.0 mm	160
700.2123	Pressure piece, 80.0 mm	320
700.2124	Pressure piece, 80.4 mm	840
700.2108	Ring, Ø 40.0 mm	60
700.2130	Drive spindle M12 x 1.5, including press nut and nuts	310

Silent bearing tool set for VAG rear axles

- For assembly and disassembly of the rubber meta or rubber plastic bearings on the rear axle
- For use alongside mechanical spindle
- For secure bearings a hollow piston cylinder may also be used
- Special steel
- In durable plastic storage case

Application range: Audi A3; Volkswagen Golf 4; Škoda Octavia >1997, Seat Leon; Toledo >2001

Caution: The spindles must be greased before first use! Overloading leads to unwanted material stresses or breakage Always check the power settings on the drive with a torque wrench



700.2100	11 pcs Silent bearing tool set for VAG rear axles	4.98

consists of:

700.2101	Pressure piece, 68.7 mm	340
700.2102	Pressure piece, 76.6 mm	580
700.2103	Pressure piece, 83.8 mm	780
700.2104	Pressure piece, 90.0 mm	300
700.2105	Pressure piece, 90.3 mm	1030
700.2106	Pressure piece, 96.3 mm	620
700.2107	Pressure piece, 97.9 mm	100
700.2108	Ring, Ø 40.0 mm	60
700.2130	Drive spindle M12 x 1.5, including press nut and nuts	310

Drive spindle

- Pressure bearing protects against increased friction during the process
- Spindle M12 x 1.5
- Double sided press bearing for quick installation and removal of bushes
- Includes press nut and nuts
- Chrome molybdenum

Caution: The spindles must be greased before first use! Overloading leads to unwanted material stresses or breakage Always check the power settings on the drive with a torque wrench



700.2130	3 pcs Drive spindle	310

consists of:

700.2126	Spindle M12	180
700.2125	Press nut M12	120
700.2109	Thrust bolt	10

CAMBER ADJUSTMENT TOOLS

Camber level

- Ideally suited to adopting the prescribed camber adjustment values before removing the shock absorbers
- The level is secured with the magnetic side on the brake discs or wheel hubs and the value can be read
- Following the repair the adjustment value is easily restored
- Quick and correct work without a great amount of effort
- Saves measuring the axle
- With adjustment wheel to allow for a zero setting
- Includes strong magnetic feet
- In durable plastic storage case



	Total length mm	
150.9431	125.0	450



Camber adjustment tool

- Ideally suited to setting the camber on vehicles with separated spring feet
- One-man operation
- The tool is tensioned between the rim and the bodywork (wings)
- Clear reduction in time required
- Adjustment is carried out by turning the sturdy hexagonal nut
- External drive hexagonal socket 22.0 mm
- Special steel

Application range: Seat Cordoba, Volkswagen Polo > 1995, etc.



	Clamping range mm	
150.9420	135.0 - 200.0	1.21

Camber adjustment tool

- Ideally suited to setting the camber on vehicles with separated spring feet
- One-man operation
- The tool is tensioned between the rim and the bodywork (wings)
- Clear reduction in time required
- Adjustment is carried out by turning the sturdy hexagonal nut
- External drive hexagonal socket 22.0 mm
- Special steel

Application range: Seat Toledo, Volkswagen Golf, Jetta, etc.



	Clamping range mm	
150.9415	135.0 - 175.0	1.16

Camber setting tool for BMW

- Ideally suited to setting the camber on the front axle
- It is used after knocking out the locating bolt of the strut bearing in a downwards direction via the spring strut bearing
- Quick and correct work without a great amount of effort
- One-man operation
- The adjustment process is carried out via the exact alignment of the upper spring strut bearing
- Without this tool the correct and exact adjustment of the camber is almost impossible
- Aluminium

Application range: BMW 1 series (E81, E82, E87, E88), 3 series (E46, E90, E91, E92, E93), X3 (E83), X5 (E53), Z4 (E85, E86)



	Ø mm	Height mm	
150.1821	82.0	25.0	347

Camber setting tool for BMW

- Ideally suited to setting the camber on the front axle
- It is used after knocking out the locating bolt of the strut bearing in a downwards direction via the spring strut bearing
- Quick and correct work without a great amount of effort
- One-man operation
- The adjustment process is carried out via the exact alignment of the upper spring strut bearing
- Without this tool the correct and exact adjustment of the camber is almost impossible
- Aluminium

Application range: BMW 5 series, (E39, E60, E61), 6 series (E63, E64), 7 series (E38, E65, E66, E67)



	Ø mm	Height mm	
150.1822	83.0	17.0	343

BMW camber setting tool set

- Ideally suited to setting the camber on the front axle
- It is used after knocking out the locating bolt of the strut bearing in a downwards direction via the spring strut bearing
- Quick and correct work without a great amount of effort
- One-man operation
- The adjustment process is carried out via the exact alignment of the upper spring strut bearing
- Without this tool the correct and exact adjustment of the camber is almost impossible
- Aluminium

Application range: BMW 1 series (E81, E82, E87, E88), 3 series (E46, E90, E91, E92, E93), 5 series, (E39, E60, E61), 6 series (E63, E64), 7 series (E38, E65, E66, E67), X3 (E83), X5 (E53), Z4 (E85, E86)



150.1820	2 pcs BMW camber setting tool set 689

consists of:

150.1821	BMW camber adjustment tool, 1 series, 3 series, X3, X5, Z4	347
150.1822	BMW camber adjustment tool, 5 series, 6 series, 7 series	343

TRACKING ADJUSTMENT TOOLS

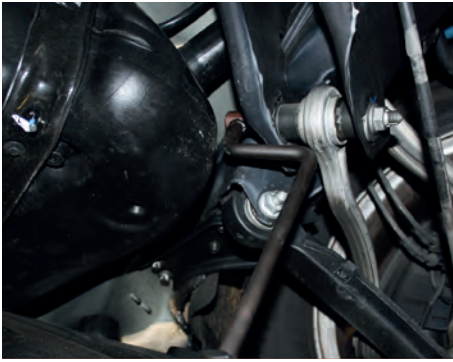
Axle tracking adjustment tool for VAG passenger cars with 4 wheel drive

- Ideally suited to tracking adjustments to the rear axle
- Suitable for the hard-to-reach adjustment screws
- Quick and correct work without a great amount of effort
- One-man operation
- 90° angled
- With 2 component handle
- Matt finish
- Chrome vanadium

Application range: all Audi and Volkswagen vehicles with all-wheel drive, e.g. Audi A4 Quattro, Volkswagen Passat 4motion, etc.



	Total length mm	
150.9426	M12 310.0	340



Axle tracking adjustment tool for Mercedes

- Ideally suited to tracking adjustments to the rear axle
- Suitable for the hard-to-reach adjustment screws
- Quick and correct work without a great amount of effort
- One-man operation
- twice angled
- Without this tool the correct and exact adjustment of the tracking is almost impossible
- Includes interchangeable spline bits
- With 2 component handle
- Matt finish
- Chrome vanadium

Application range: Mercedes C class and S class, also for older models with under body panels and vehicles with level sensors



Part No.	Quantity	Description	Weight (kg)		
150.9470	3 pcs	Axle tracking adjustment tool for Mercedes	440		

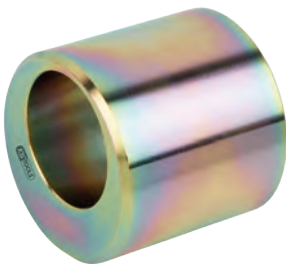
consists of:

Part No.	Description	Weight (kg)			
150.9471	Basic adjustment tool for Mercedes	410			
150.9472	10 mm attachment XZN® bit, M10	14			
150.9443	10 mm attachment XZN® bit, M12	16			

Tracking adjustment cam nut for BMW

- Ideal for adjusting the tracking on the rear axle as well as camber adjustment on the wishbone
- For adjustment the screws must be removed from the lower wishbone
- By putting in and turning the cam nut on the securing screw the wishbone is moved to the required camber adjustment
- Internal square drive to DIN 3120/ISO 1174
- Special steel

Application range: BMW E36, BMW E46, BMW E83, BMW E85



Part No.	Length (mm)	Weight (kg)	
700.1671	40.0	300	

Tracking adjustment tool for Mercedes

- Ideally suited to tracking adjustments to the rear axle
- Removes mounting of the exhaust system
- Saves a lot of time
- No adjustment of the cam screw when removing the counter nut
- External double-hex drive 21 mm with integrated TX 55 use and internal hexagon drive 17 mm
- Special steel

Application range: Mercedes W211, Mercedes C219 and Mercedes W209



Part No.	Drive (mm)	Internal Drive (mm)	Length (mm)	Weight (kg)			
700.1672	21.0	T55	17	260.0	280		

LEVER / PRY BARS

Pry bar

- Ideally suited to assembly and disassembly work
- For pressure testing securely-fitted parts
- Suitable for positioning parts or holding parts in place
- 1 piece handle
- Hardened
- Chrome molybdenum



Part No.	D (mm)	L1 (mm)	L2 (mm)	Weight (kg)	
911.8101	11.0	200.0	115.0	130	
911.8102	15.0	300.0	185.0	220	
911.8103	18.0	450.0	320.0	420	
911.8104	18.0	600.0	470.0	560	

Pry bar sets

- Ideally suited to assembly and disassembly work
- For pressure testing securely-fitted parts
- Suitable for positioning parts or holding parts in place
- 1 piece handle
- Hardened
- Chrome molybdenum



Part No.	Quantity	Dimensions	Weight (kg)		
911.8100	4 pcs	11 x 115 mm - 15 x 185 mm - 18 x 320 mm - 18 x 470 mm	1.33		

Mechanics pry bar

- Angular lever end guarantees non-slip surface
- With go through blade and hammer cap
- Ideally suited to assembly and disassembly work
- For pressure testing securely-fitted parts
- Suitable for positioning parts or holding parts in place
- Suitable for the testing of defective bearings
- With two component handle
- Heavy design especially for commercial vehicles
- Special steel



Part No.	Bend radius	L (mm)	Weight (kg)		
911.8411	0°	900.0	1.70		
911.8412	45°	900.0	1.75		
911.8413	75°	600.0	1.17		
911.8414	90°	600.0	1.20		
911.8415	45°	1120.0	4.75		

Mechanics pry bar set

- Angular lever end guarantees non-slip surface
- With go through blade and hammer cap
- Ideally suited to assembly and disassembly work
- For pressure testing securely-fitted parts
- Suitable for positioning parts or holding parts in place
- Suitable for the testing of defective bearings
- With two component handle
- Heavy design especially for commercial vehicles
- Special steel
- In durable plastic storage case



Part No.	Quantity	Description	Weight (kg)		
911.8410	4 pcs	Mechanics pry bar set	8.70		

consists of:

Part No.	Description	Weight (kg)			
911.8411	Mechanics pry bar, straight 900 mm	1.70			
911.8412	Mechanics pry bar 45°, angled head 900 mm	1.75			
911.8413	Mechanics pry bar 75°, angled head 600 mm	1.17			
911.8414	Mechanics pry bar 90°, angled head 600 mm	1.20			

Intexable ratchet pry bar

- Extremely versatile and robust execution
- Variable adjustable roll head
- Maximum power transmission in the narrowest area
- Optimal leverage in minimal work area
- Ideally suited for commercial vehicles
- Special steel



	L mm	Assembly levels	kg
911.8176	250.0	5	600
911.8177	300.0	5	600
911.8178	400.0	5	600
911.8179	620.0	5	1810

Adjustable joint roll head pry bar set

- Extremely versatile and robust execution
- Variable adjustable roll head
- Maximum power transmission in the narrowest area
- Optimal leverage in minimal work area
- Ideally suited for commercial vehicles
- Special steel



	kg
911.8175 3 pcs Adjustable joint roll head pry bar set	1.20

consists of:

	kg
911.8176 Ratched pry bar, 10"	600
911.8177 Ratched pry bar, 12"	600
911.8178 Ratched pry bar, 15"	600

Roller head telescopic pry bar

- Handle can be lengthened by the push button in ratchet steps
- Rolling head adjustable in stages
- Extra thin with embedded rolling head
- Maximum power in the smallest areas
- Optimal leverage in minimal work area
- Ideally suited to assembly and disassembly work
- For pressure testing securely-fitted parts
- Suitable for positioning parts or holding parts in place
- Suitable for the testing of defective bearings
- Ideal for use in passenger cars and commercial vehicles
- Special steel



	L mm	H mm	B mm	kg
911.8186	325-460	90.0	12.0	780
911.8187	600-915	120.0	20.0	1900
911.8188	865-1350	145.0	24.0	4260

Universal axle lever

- Special lever for the correct and protective dismantling and assembly of axle parts
- Through multiple adjustability of the breadth most different designs it lets itself move without large power expense required
- Protective and certain installation and extension
- The injury risk minimizes
- No second person required
- Universal application by revolving and adjustable claw
- High power, firm seat and time savings also
- Stable construction - optimal stop
- Special steel



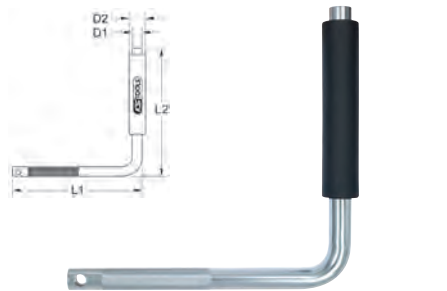
	L mm	kg
700.1460	1000.0	4.36

AXLE PLAY TEST TOOL

Axle play detector bar

- For localising sources of faults in the vehicle axle area
- Testing under load
- Large time savings during fault diagnostics
- Suitable for all passenger cars up to 3.5 t
- Special steel

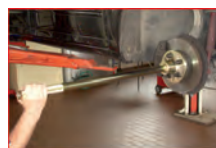
Application range: Dome bearings / silent bearings / carrier joint / track rod end / coupling rod / wheel bearings / axial joint / steering gear / stabiliser, etc.



	L1 mm	L2 mm	D1 mm	D2 mm	kg
700.1465	400.0	400.0	25.0	50.0	1.90

Movement test device

- Universal usage tool for the determination of sign of wear
- By means of the universal wheel hub flange the lever is secured directly to the wheel hub and serves therefore as an extended arm to the absolutely sensitive locating of excess mobility or changes in the area
- Ideal suited for wheel housings, Silent bearings, ball joints (Tie rod joints) suspension joints/coupling rods etc



	Ø mm	L mm	kg
700.1455	36.0	840.0	6.00

consists of:

		kg
700.1411	Wheel hub/drive flange dismating tool	2.55
700.1450	Movement Test lever, Reception AG 1.1/2" x 16G	3.24

Electronic professional stethoscope

- For the professional defect diagnosis
- Serves the acoustic test and judgment of a component under load
- Delivers fast, absolutely clear and unambiguous test results over sounds
- Contains 6 independent sensors that can mounted for example on the vehicle floor or in the engine compartment for ease
- Simple coordination of the defect source through colour coded cable and colour table on the box
- In durable plastic storage case

Application range:

Engine: Valves, bearings, piston pins
 Alternator: Bearing sounds
 Differential: Barrel sounds
 Bodywork: Creak and squeak sounds



	kg
150.1695 18 pcs Electronic professional stethoscope	2.50

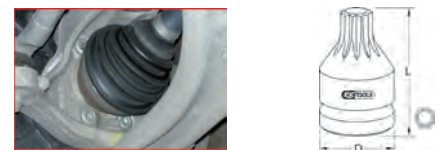
consists of:

	kg
150.1695-1 Headset for 150.1695	350
150.1695-2 Amplifier for 150.1695	115
150.1695-3 Hand held stethoscope for 150.1695	165
150.1695-4 Velcro strap for 150.1695, 8 pcs	9
150.1695-5 Sensor for 150.1695	10
150.1695-6 Colour coded cable for 150.1695, 6 pcs	755

SOCKET SET FOR CHASSIS BOLTING

Impact bit socket for spline(XZN®) screws

- Spline (XZN®)
- Internal square drive to DIN 3121 / ISO 1174
- Short execution
- For machinery usage
- Phosphate finish
- Chrome molybdenum



	L mm	D mm	T mm	kg
515.1171 M14	45.0	25.0	20.0	110
515.1173 M16	45.0	25.0	20.0	120
515.1175 M18	45.0	25.0	20.0	130

Impact bit socket for spline (XZN®) screws

- Spline (XZN®)
- Internal square drive to DIN 3121 / ISO 1174
- Long execution
- For machinery usage
- Phosphate finish
- Chrome molybdenum



1/2"

		L mm	D mm	T mm	
515.1172	M14	75.0	25.0	50.0	150
515.1174	M16	75.0	25.0	50.0	170
515.1176	M18	75.0	25.0	50.0	190

Impact bit socket set for spline (XZN®) screws, long

- Ideal set compilation for motor vehicles
- Spline (XZN®)
- Internal square drive to DIN 3121 / ISO 1174
- Long execution
- For machinery usage
- Phosphate finish
- Chrome molybdenum



1/2" 3/4"

515.1160	7 pcs Impact bit socket set for spline (XZN®) screws, long	1.05

consists of:

515.1167	3/4" Impact socket, 24mm	280
515.1161	1/2" impact socket, XZN, M14 small	110
515.1162	1/2" impact socket, XZN, M14 large	150
515.1163	1/2" impact socket, XZN, M16 small	120
515.1164	1/2" impact socket, XZN, M16 large	170
515.1165	1/2" impact socket, XZN, M18 small	130
515.1166	1/2" impact socket, XZN, M18 large	190

Impact bit socket set

- TX and Spline
- Internal square drive to DIN 3121 / ISO 1174
- Short execution
- For machinery usage
- Matt finish
- Chrome molybdenum
- In durable steel storage case



3/4"

515.0010	6 pcs Impact bit socket set	2.20

consists of:

515.0012	3/4" Impact bit socket XZN, short, M16	270
515.0013	3/4" Impact bit socket XZN, short, M18	270
515.0016	3/4" Impact bit socket TX short, T70	270
515.0017	3/4" Impact bit socket TX short, T80	270
515.0018	3/4" Impact bit socket TX short, T90	280
515.0019	3/4" Impact bit socket TX short, T100	290

VIBRO IMPACT

Vibro impact pneumatic chisel hammer set

- With non slip soft grip handle
- Air exhaust through the handle
- Ergonomic designed handle
- Ideal for industry
- Efficient, gentle loosening of screw fittings
- With stepless impact regulation
- Vibration dampened
- Cold insulated handle
- Includes 1/4" coupling connector
- Ultra light housing from two component plastic



515.3880	6 pcs Vibro impact pneumatic chisel hammer set	5.70

consists of:

515.3881	Pneumatic chisel hammer	2.17
515.3882	Holder for pneumatic chisel hammer	1.55
515.3886	Pneumatic chisel track rod loosener, 110mm	0.14
515.3887	Pneumatic chisel hammer, 110mm	0.15
515.3888	Pneumatic chisel loosening adapter, 130mm	0.16
515.3889	Pneumatic chisel loosening mandrel, 100x25x12mm	0.19

Vibro-Power ball joint releaser

- Vibration supported release on ball joints
- Adjustable, e.g. conical seat connections to wheel bearing houses and wishbones
- Pneumatic chisel adapter (10 mm) for use with pneumatic chisel hammers on the market
- Special steel

Caution: May only be used alongside a pneumatic chisel hammer



	Length mm	Width mm	Height mm	Drive	
515.3884	68.0	40.0	130.0	Ø 10 mm	340

Universal bearing and bush driver set

- Universal applicable range
- Can be used manually with a hammer or workshop press
- Applications from 18.0 - 65.0 mm
- Pressure plates are for the two driving spindles
- Special steel
- In durable plastic storage case



700.1350	51 pcs Universal bearing and bush driver set	8.00

consists of:

Part No.	Description	Quantity
700.1348	Reception adaptor, 45mm	500
700.1349	Impact drive knurled grip, 220mm	42
700.1351	Pressure plate, 18mm	12
700.1352	Pressure plate, 19mm	14
700.1353	Pressure plate, 20mm	16
700.1354	Pressure plate, 21mm	20
700.1355	Pressure plate, 22mm	22
700.1356	Pressure plate, 23mm	27
700.1357	Pressure plate, 24mm	30
700.1358	Pressure plate, 25mm	34
700.1359	Pressure plate, 26mm	38
700.1360	Pressure plate, 27mm	43
700.1361	Pressure plate, 28mm	47
700.1362	Pressure plate, 29mm	50
700.1363	Pressure plate, 30mm	53
700.1364	Pressure plate, 31mm	59
700.1365	Pressure plate, 32mm	65
700.1366	Pressure plate, 33mm	68
700.1367	Pressure plate, 34mm	72
700.1368	Pressure plate, 35mm	77
700.1369	Pressure plate, 36mm	82
700.1370	Pressure plate, 37mm	89
700.1371	Pressure plate, 38mm	94
700.1372	Pressure plate, 39mm	97
700.1373	Pressure plate, 40mm	105
700.1374	Pressure plate, 41mm	111
700.1375	Pressure plate, 42mm	119
700.1376	Pressure plate, 43mm	125
700.1377	Pressure plate, 44mm	132
700.1378	Pressure plate, 45mm	138
700.1379	Pressure plate, 46mm	144
700.1380	Pressure plate, 47mm	153
700.1381	Pressure plate, 48mm	159
700.1382	Pressure plate, 49mm	165
700.1383	Pressure plate, 50mm	172
700.1384	Pressure plate, 51mm	181
700.1385	Pressure plate, 52mm	188
700.1386	Pressure plate, 53mm	196
700.1387	Pressure plate, 54mm	205
700.1388	Pressure plate, 55mm	213
700.1389	Pressure plate, 56mm	221
700.1390	Pressure plate, 57mm	231
700.1391	Pressure plate, 58mm	238
700.1392	Pressure plate, 59mm	247
700.1393	Pressure plate, 60mm	258
700.1394	Pressure plate, 61mm	266
700.1395	Pressure plate, 62mm	276
700.1396	Pressure plate, 63mm	284
700.1397	Pressure plate, 64mm	294
700.1398	Pressure plate, 65mm	305
700.1399	Support plate, 75mm	500

EXTRACTOR

Brass and aluminium punch

- For extracting bearing, bolts and bushes, etc.
- Rimed handle for better control
- Brass / Aluminium



Material	Ø mm	L mm	kg	
156.0415	brass	20,0	300,0	1.13
156.0416	aluminium	30,0	300,0	1.89

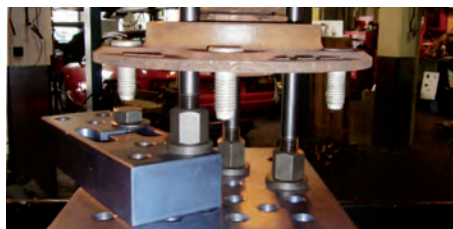
PRESS UNDERLAYS

Universal press support

- Universal adjustable support
- Through the height adjustable bolts a fixture and vibration safe 3 level points construction is created
- The amount and arrangement at thread enable the conformity to almost every component surface
- Includes lateral safety device

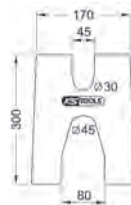


	L mm	B mm	H mm	Replacement bolt & nut set	kg
700.1740	245.0	200.0	40.0	700.1741	8.10



Prism plate extra narrow, Ø 30,0/45,0 mm

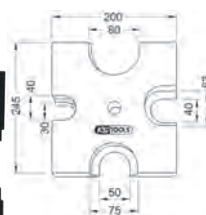
- Universally usable plates
- Especially suitable for tight spaces (up to 4 mm)
- For pressing on and off bearings or cogs on bearing shafts, e.g. on engines, transmissions, etc.
- Special steel



	Length mm	Width mm	kg
700.1744	300.0	170.0	1.10

Universal prism plate Ø 40.0/63.0/75.0/80 mm

- Universally usable plates
- For the pressing on and off of bearing on rear axles, engines and transmissions
- Special steel



	Length mm	Width mm	kg
700.1738	245.0	200.0	7.32

Prism plate Ø 62,0 mm

- Universally usable plates
- For pressing on and off bearings or cogs on bearing shafts, e.g. on engines, transmissions, etc.
- in connection with workshop presses
- Special steel



	Length mm	Width mm	kg
700.1739	200.0	180.0	4.36

Prism plate Ø 67,0 mm

- Universally usable plates
- For pressing on and off bearings or cogs on bearing shafts, e.g. on engines, transmissions, etc.
- in connection with workshop presses
- Special steel



	Length mm	Width mm	kg
700.1742	200.0	180.0	4.28

Prism plate Ø 72,0 mm

- Universally usable plates
- For pressing on and off bearings or cogs on bearing shafts, e.g. on engines, transmissions, etc.
- in connection with workshop presses
- Special steel



	Length mm	Width mm	kg
700.1743	200.0	180.0	4.14