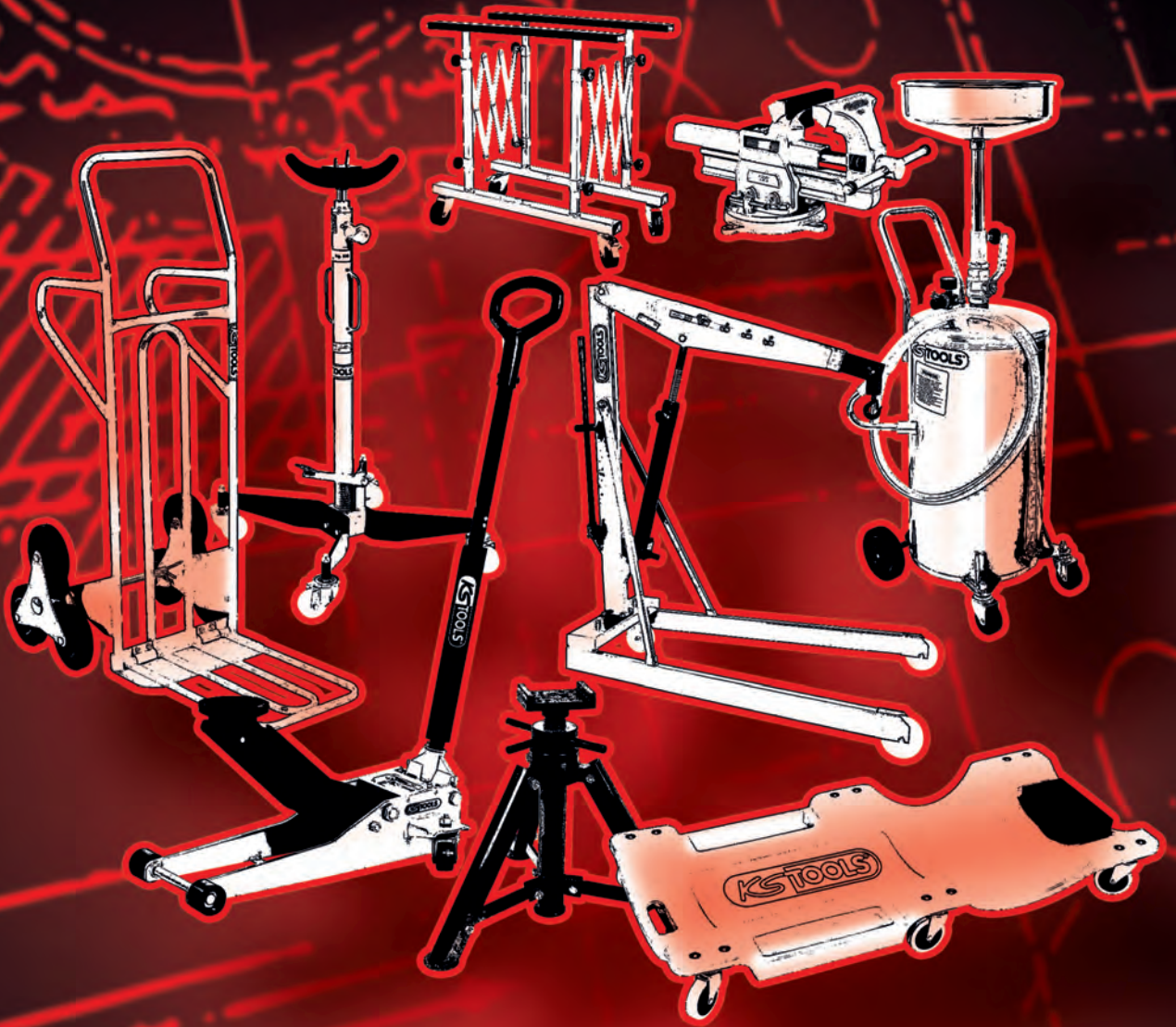


# K15



**KS TOOLS**





GENERAL WORKSHOP REQUIREMENTS



Innovation is our mission!



	PAGE	
		1
		2
		3
		4
		5
		6
		7
		8
		9
		10
		11
		12
		13
		14
		15
		16
		17
		18
		19
		20
		21
		22
		23
		24
		25
		26



## VICES

### Pipe vice

- Hinged
- V-shaped support
- Special steel
- Ideal for working with hydraulics and pneumatic lines



	Clamping range mm	Clamping range	kg
914.0010	10,0 - 60,0	1/8" - 2"	6.88
914.0011	10,0 - 89,0	1/8" - 3"	6.88

### Chain pipe vice

- Hinged
- V shaped pipe rest with teeth
- Interchangeable jaws
- Special steel



	Clamping range mm	Clamping range	kg
914.0012	10,0 - 76,0	1/8" - 2.1/2"	1.90
914.0014	10,0 - 114,0	1/8" - 4"	4.50
914.0016	10,0 - 165,0	1/8" - 6"	8.50

### Bench vice

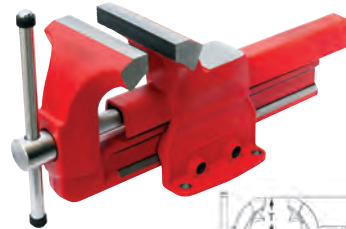
- Swivel base
- Interchangeable jaws
- Includes pipe vice attachment
- Absolutely parallel with adjustable centric drive
- Extra high possible clamping jaws shaped by large embossed casting
- Large anvil for straightening and compression work
- Induction hardened jaws and anvil
- Vise forward opening
- Ground jaws, anvil plate and slide corners
- Special steel



	Jaw length	Jaw length mm	Clamping range mm	kg
914.0003	3"	75,0	100,0	7.50
914.0004	4"	100,0	120,0	8.70
914.0005	5"	130,0	140,0	11.00
914.0006	6"	150,0	170,0	14.50
914.0008	8"	200,0	200,0	20.50

### Bench vice

- With adjusting screw and pipe clamps
- Forged front and rear jaws
- Extra high possible clamping jaws shaped by large embossed casting
- Durable prismatic guide
- With mounting screws for turntable
- Induction hardened jaws and anvil
- Double start trapezoidal thread for quick opening and closing
- Vise forward opening
- Ground jaws, anvil plate and slide corners
- Special steel



	Jaw length mm	Clamping range mm	T mm	H mm	L mm	Cut-off ø mm	kg
914.0026	100,0	125,0	70,0	140,0	320,0	12,0	5,00
914.0031	125,0	155,0	80,0	180,0	395,0	14,0	11,00
914.0036	150,0	180,0	98,0	220,0	485,0	16,0	20,00
914.0041	175,0	205,0	110,0	240,0	550,0	18,0	29,00

### Turntable for bench vice

- Ideal supplement for KS-vices 914.0027 - 914.0041
- Enables accurate positioning of the workpiece
- 360° freely rotatable
- Safe and quick locking via handle
- Flat and stable construction
- Inclusive fastening screws for vice



		Ø mm	kg
914.0027	914.0026	100,0	1,40
914.0032	914.0031	125,0	2,80
914.0037	914.0036	150,0	3,75
914.0042	914.0041	175,0	4,85

### Bench vice with turntable

- With adjusting screw and pipe clamps
- Forged front and rear jaws
- Extra high possible clamping jaws shaped by large embossed casting
- Durable prismatic guide
- With mounting screws for turntable
- Induction hardened jaws and anvil
- Double start trapezoidal thread for quick opening and closing
- Vise forward opening
- Ground jaws, anvil plate and slide corners
- Special steel



		Jaw length mm	kg
914.0025	2 pcs	100,0	6,40
914.0030	2 pcs	125,0	13,80
914.0035	2 pcs	150,0	23,75
914.0040	2 pcs	175,0	33,85

### Aluminium bench vice protective jaws with textured surface

- Suitable for all bench vices
- The profile is right angled and level parallel
- Integrated special magnet hold the protective jaws safely on the vice
- For material protection and non slip grip on sensitive materials
- For coarse to medium fine work pieces
- Fine textured
- Aluminium



	Protective jaws mm	kg
914.0080	100,0	170
914.0081	120,0	210
914.0082	140,0	240
914.0083	160,0	260
914.0084	175,0	290

### Aluminium bench vice protective jaws with trapezoid notches

- Suitable for all bench vices
- The profile is right angled and level parallel
- Integrated special magnet hold the protective jaws safely on the vice
- For material protection and non slip grip on sensitive materials
- For different shaped materials
- For trapezoid use
- Aluminium



	Protective jaws mm	kg
914.0085	100,0	145
914.0086	120,0	187
914.0087	140,0	210
914.0088	160,0	226
914.0089	175,0	248

### Aluminium bench vice protective jaws with rubber insert

- Suitable for all bench vices
- The profile is right angled and level parallel
- Integrated special magnet hold the protective jaws safely on the vice
- For material protection and non slip grip on sensitive materials
- For thin walled wood and plastic parts
- Smooth
- Aluminium / rubber

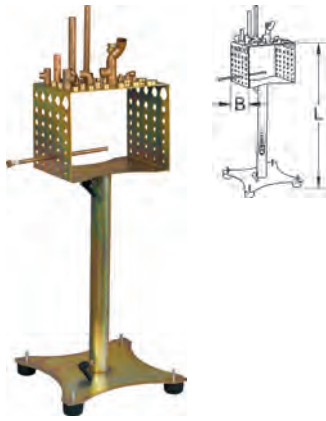


	Protective jaws mm	kg
914.0090	100,0	163
914.0091	120,0	207
914.0092	140,0	224
914.0093	140,0	204
914.0094	175,0	276



**Soldering vice**

- Special steel



	B mm	L mm	kg
914.0020	255.0	990.0	13.20

**SERVICE TROLLEYS**

**Workshop service trolley**

- Made from robust sheet steel construction
- Non slip foam insert on the upper working surface
- Lower shelf with high retaining border
- 2 castor wheels 100 mm
- 2 castor wheels with brake 100 mm
- High level of stability



**Technical data:**  
Total load capacity: 200 kg

	L mm	B mm	H mm	kg
890.0002	697.0	489.0	836.0	19.10

**Workshop service trolley**

- Extremely substantial plastic construction
- Without screws easily constructed
- Distance between the ground 30 cm
- 2 castor wheels 100 mm
- 2 castor wheels with brake 100 mm
- High level of stability
- Light profile weight
- Columns made out of anodised aluminum



**Technical data:**  
Total load capacity: 200 kg

	L mm	B mm	H mm	kg
800.0020	860.0	480.0	1010.0	12.10

**Workshop service trolley with lining**

- Extremely substantial plastic construction
- Equipment lining
- Without screws easily constructed
- Distance between the ground 30 cm
- 2 castor wheels 100 mm
- 2 castor wheels with brake 100 mm
- High level of stability
- Light profile weight
- Columns made out of anodised aluminum



**Technical data:**  
Total load capacity: 200 kg

	L mm	B mm	H mm	kg
800.0021	860.0	480.0	1010.0	12.10

**Workshop service trolley with 2 drawers**

- Extremely robust plastic construction
- Easily constructed without screws
- Two ball bearing drawer runner guides
- 2 castor wheels 100 mm
- 2 castor wheels with brake 100 mm
- High level of stability
- Light profile weight
- Columns made out of anodised aluminum



**Technical data:**  
Drawer dimensions: H 85 x B 430 x T 520 mm  
Total load capacity: 200 kg  
Load capacity of each drawer: 35 kg

	L mm	B mm	H mm	kg
800.0030	860.0	480.0	1010.0	14.20

**Workshop service trolley with 2 drawers and lining**

- Extremely substantial plastic construction
- Without screws easily constructed
- Two ball bearing drawer runner guides
- 2 castor wheels 100 mm
- 2 castor wheels with brake 100 mm
- High level of stability
- Light profile weight
- Columns made out of anodised aluminum



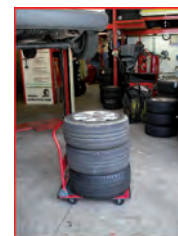
**Technical data:**  
Drawer dimensions: H 85 x B 430 x T 520 mm  
Total load capacity: 200 kg  
Load capacity of each drawer: 35 kg

	L mm	B mm	H mm	kg
800.0031	860.0	480.0	1010.0	15.00

**PLATFORM TROLLEY**

**Tyres platform trolley**

- Solid construction of steel sheet
- Firmly fixed grasping handle made from steel tube
- Grasping handle is hinged and locked with safety security catches without any tools
- In minimal time
- Rubber surrounding edges protect the trolley and surroundings from damage
- For ball bearing rubber wheels
- Load area has a plastic covering



**Technical data:**  
Wheel diameter: 100 mm  
Total load capacity: 150 kg

	L mm	B mm	H mm	kg
800.0015	740.0	480.0	810.0	9.20

## PLATFORM

### Aluminium work platform

- With skid-proof profile on the running stage
- With chequer plate profile on the steps
- No tipping over through obliquely placed standing feet
- Double-sided access
- With large platform for safe standing
- With safety clips for added security
- Beams and steps made from aluminium
- Collapsible and therefore space saving when storing
- Rounded plastic feet protect the floor and the running stage
- Secure stand makes working easier
- Can be used to assemble screens, engine bay work, work on the roof, commercial vehicle pit work, etc.
- Universally usable for high vehicles such as camper vans, small transporters, wagons, buses and off-road vehicles
- Heavy aluminium construction



#### Technical data:

Platform dimensions: 1000 x 300 mm  
Total load capacity: 150 kg

	L mm	B mm	H mm	kg
800.0960	1345.0	405.0	480.0	7.40

### Safety assembly step

- No tipping over through obliquely placed standing feet
- Anti slip, hot dip galvanised, with the frame riveted lattice rustproof
- Step to DIN 50976
- Massive and distortion stiff steel tube construction
- Base frame plastic coated
- The gripped plastic feet protect the surface and add stability
- Applicable e.g. panel assembly, engine compartment works, roof works truck pit working
- Universal suitable in very high vehicles e.g. motor homes, small vehicles, truck and buses, terrain vehicles



#### Technical data:

Height 2nd step: 450.0 mm  
Surface area: 690 x 620 mm  
Steel grating: 590 x 290 mm  
Total load capacity: 300 kg

		kg
450.0960	Safety assembly step	14.00

## SUPPORTS

### Windscreen table with rubber protective pads

- Ideally suited to holding the windscreen when removing, or removing adhesive material
- Four moveable rubber nipples hold the windscreen in place and prevent scratches
- Fully adjustable in width
- For nearly all windscreen sizes
- Foldable to save space during storage
- Robust construction
- Up to 60 kg capacity
- From blue painted steel pipe



	L mm	H mm	Suction cup Ø mm	kg
140.2225	1160.0	1070.0	140.0	10.35

### Windscreen holder

- Ideally suited to holding the windscreen when removing, or removing adhesive material
- Holding tube with non-slip, coated padding offer optimal grip and prevent scratches
- Fully adjustable in width
- For nearly all windscreen sizes
- Foldable to save space during storage
- Robust construction
- Up to 80 kg capacity
- From red powder-coated steel pipe



	L mm	H mm	kg
140.2226	790.0	1060.0	7.70

## Universal Telescopic-Multi-purpose trolley

- Ideally suited to bodywork restoration, in the painting area or for filling screens when removing, or applying adhesive material, etc.
- Holding tube with non-slip, coated padding offer optimal grip and prevent scratches
- The multi-talented universal use, since width and height are fully adjustable and lockable
- For nearly all windscreen sizes
- Can also be used as a work bench or for carrying parts
- Collapsible to save space during storage
- With 4 stable castors, 2 with locking brakes
- Simple handling
- Load capacity up to 100 kg
- Robust construction from square pipe



	B mm	H mm	kg
500.8100	257,0-1380,0	845,0-1320,0	23.50

### Windscreen worktable with castors

- Ideally suited to holding the windscreen when removing, or removing adhesive material
- Holding tube with non-slip, coated padding offer optimal grip and prevent scratches
- For nearly all windscreen sizes
- Foldable to save space during storage
- With 4 stable castors, 2 with locking brakes
- Simple handling
- Load capacity up to 100 kg
- Robust construction from steel pipe



	L mm	H mm	Pad	kg
140.2227	900.0	930.0	140.2228	8.00



**PAINT REQUIREMENTS**

**Single-use colour filter sieve**

- Ideal for filtering paints of mechanical impurities
- Paper filter with nylon filter insert
- Optimal for fine cleaning



	Micron	Content	Colour code	
500.8062	125	250	○	1.50
500.8061	190	250	○	1.50

**Single-use colour mixer with cover**

- Single-use colour mixer for mixing all types of paint
- Solvent resistant plastic
- Cover for optimal storage
- With mix scale
- Also suitable for water-based paints



	Material	Colour code	Content	Content	
500.8056	polypropylene	transparent	400	25	420
500.8057	polypropylene	transparent	650	25	620
500.8058	polypropylene	transparent	1300	25	1100
500.8059	polypropylene	transparent	2240	25	1700

**Single-use protective overall**

- Universal usage, e.g. during painting
- Breathable
- Hood with elastic band
- Arm, leg and waist bands
- Zip fastener with cover



	Colour code	Content	
500.8006	S white	1	220
500.8007	M white	1	220
500.8008	L white	1	220
500.8009	XL white	1	220
500.8076	XXL white	1	220

**PAINTING STANDS**

**Paint stand for wheel rims**

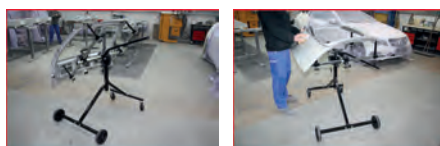
- Ideally suited to filing rims or wheels when grinding or painting
- Adjustable holding devices offer optimum grip and protect from scratches
- Multi-way adjustment: width, height and tilt
- For almost all sizes
- With four sturdy rollers, two of which have brakes
- Efficient, one-handed working
- Support rods and cone can be adjusted optimally
- Rims and wheels can be turned for optimum results
- No stopping work leading to a smoother finish
- Saves a lot of time when preparing for painting
- Better results
- Up to 90 kg capacity
- Robust construction from steel pipe



	L mm	B mm	H mm	
140.2222	950,0	900	1350,0-1950,0	19,00

**Painting stands**

- Ideally suited to filing bonnets, tail gates, wings, bumpers and when grinding or painting
- Adjustable holding devices offer optimum grip and protect from scratches
- Multi-way adjustment: width, height and tilt
- For almost all sizes
- With 4 sturdy castors, 2 of which have brakes and steering
- Efficient, one-handed working
- No stopping work leading to a smoother finish
- Saves a lot of time when preparing for painting
- Better results
- Up to 35 kg capacity
- Robust construction from steel pipe



	L mm	B mm	H mm	
140.2254	1100,0	780,0	1500,0	17,50

**Rotatable paint stands**

- Ideally suited to filing bonnets, tail gates, wings, bumpers and small parts when grinding or painting
- Adjustable holding devices offer optimum grip and protect from scratches
- Multi-way adjustment: width, height and tilt
- Can be turned 360° with foot lever
- For almost all sizes
- Includes lengthener which can be disassembled at any time
- With 6 universally adjustable holding arms
- Includes gun holder on one side
- With two sturdy wheels
- Efficient, one-handed working
- No stopping work leading to a smoother finish
- Saves a lot of time when preparing for painting
- Better results
- Up to 35 kg capacity
- Robust, galvanised construction



	L mm	B mm	H mm	
140.2384	1900,0	800,0	1000,0	17,00

**Paper trolley with 2 shelves**

- Ideally suited to masking painting
- Mobile paper dispenser with 2 shelves for up to 2 paper rolls
- Suitable for covering paper and covering sheets up to 45 cm
- Supplied with adjustable tape pressure rollers
- Includes gun holder on one side
- Problem-free and graded separation with use of a sharp blade
- With practical storage compartments
- With two sturdy wheels
- Includes handle for easy movement in the workshop
- Robust construction from steel pipe



	L mm	B mm	H mm	
140.2382	660,0	600,0	920,0	11,00

### Paper trolley with 4 shelves

- Ideally suited to masking painting
- Mobile paper giver with 4 shelves for up to 4 paper rolls
- Suitable for covering paper and covering sheets up to 45 cm
- Two shelves for max. 30 cm and two shelves for max. 45 cm
- Supplied with adjustable tape pressure rollers
- Problem-free and graded separation with use of a sharp blade
- With two sturdy wheels
- Includes handle for easy movement in the workshop
- Robust construction from steel pipe



	L mm	B mm	H mm	kg
140.2383	580.0	560.0	1080.0	11.00

### Paper trolley with 3 shelves

- Ideally suited to masking painting
- Mobile paper giver with 4 shelves for up to 6 paper rolls
- Suitable for covering paper and covering sheets up to 90 cm
- Supplied with adjustable tape pressure rollers
- Simple replacing of paper rolls
- Multi-adjustable for different lengths
- Includes gun holder on both sides
- With 4 sturdy, steerable castors
- Includes handle for easy movement in the workshop
- Robust construction from steel pipe



	L mm	B mm	H mm	kg
140.2350	1240.0	540	1130.0	29.00

### PALLET CAGE TROLLEY

#### Pallet cage trolley

- For universal use in the workshop
- Ideal for transporting body parts, screens, etc.
- With 4 steering castors
- Load capacity up to 80 kg
- Robust construction from steel pipe



	Length mm	Width mm	Height mm	kg
160.0260	900.0	600.0	1965.0	40.86

### TRANSPORT TROLLEY

#### Telescopic sack trolley with pneumatic wheels

- Steel tubular structure with deep welded joints
- Light and agile transportation for use in smallest space
- Effortless receiving and transporting of packages, carton and all other objects
- From round tubes welded together manufactured and solid
- Fold away shovel base
- High quality telescopic pole
- Equipped with 2 fixed wheels with pneumatic tyres
- Safety handles and slip protection
- Perfectly suitable in industry and business



<b>Technical data:</b>				
Tyre size:			Ø 260 x 80 mm	
Shovel/base dimensions:			B 300 x T 350 mm	
Min. dimensions:			810.0 mm	
Max. dimensions:			1140.0 mm	

	Max load kg	L mm	B mm	H mm	kg
160.0224	200.0 kg	630.0	480.0	1140.0	10.00

### Transport sack trolley with pneumatic wheels

- Steel tubular structure with deep welded joints
- Light and agile transportation for use in smallest space
- Effortless receiving and transporting of packages, carton and all other objects
- From round tubes welded together manufactured and solid
- Very wide shovel base
- Equipped with 2 fixed wheels with pneumatic tyres
- Safety handles and slip protection
- Perfectly suitable in industry and business



<b>Technical data:</b>				
Tyre size:			Ø 260 x 85 mm	
Shovel/base dimensions:			B 170 x T 420 mm	

	Max load kg	L mm	B mm	H mm	kg
160.0225	300.0 kg	620.0	420.0	1100.0	10.00

### Transport sack trolley with full rubber tyres

- Steel tubular structure with deep welded joints
- Light and agile transportation for use in smallest space
- Effortless receiving and transporting of packages, carton and all other objects
- From round tubes welded together manufactured and solid
- Equipped with 2 fixed full rubber wheels
- Safety handles and slip protection
- Perfectly suitable in industry and business



<b>Technical data:</b>				
Tyre size:			Ø 255 x 46 mm	
Shovel/base dimensions:			B 170 x T 400 mm	

	Max load kg	L mm	B mm	H mm	kg
160.0228	250.0 kg	530.0	400.0	1100.0	17.00



**Transport sack trolley with pneumatic wheels**

- Steel tubular structure with deep welded joints
- Light and agile transportation for use in smallest space
- Effortless receiving and transporting of packages, carton and all other objects
- From round tubes welded together manufactured and solid
- Fold away shovel base
- Equipped with 2 fixed wheels with pneumatic tyres
- Safety handles and slip protection
- Perfectly suitable in industry and business



**Technical data:**

Tyre size: Ø 260 x 85 mm  
Shovel/base dimensions: B 340 x T 520 mm

Max load kg	L mm	B mm	H mm	kg	
160.0226	250.0	620.0	400.0	1100.0	10.00

**Sack trolley with full rubber three staged wheels**

- Steel tubular structure with deep welded joints
- Light and agile transportation for use in smallest space
- Effortless receiving and transporting of packages, cartons and all other objects
- From round tubes welded together manufactured and solid
- Fold away shovel base
- Equipped with 2 fixed wheels with pneumatic tyres
- Full rubber three staged wheels
- Perfectly suitable in industry and business



**Technical data:**

Tyre size: Ø 160 x 30 mm  
Shovel/base dimensions: B 340 x T 520 mm

Max load kg	L mm	B mm	H mm	kg	
160.0227	250.0	850.0	715.0	1610.0	15.00

**Professional wheel trolley**

- Steel tubular structure with deep welded joints
- Light and agile transportation for use in smallest space
- For the easy stacking and transporting of tyres and wheels
- From round tubes welded together manufactured and solid
- 2 large pneumatic tyres
- 2 fixed rubber wheels
- Improved standing and prevention of tipping
- Optimal transportation due to traverse brake stop
- Perfectly suitable with the tyre trade or vehicle workshops



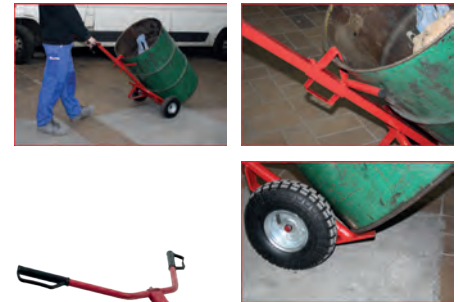
**Technical data:**

Large size fixed wheels: Ø 260 mm (pneumatic tyres)  
Large size swivel wheels: Ø 125 mm (solid rubber)  
Max. bucket dimensions: Ø 730 mm

Max load kg	L mm	B mm	H mm	kg	
160.0055	150.0	850.0	715.0	1610.0	15.00

**Transport trolley for barrels**

- Steel tubular structure with deep-welded joints
- With pneumatic tyres
- Light and agile transportation for use in smallest space
- Suitable for all common 200 litre barrels (GGVS, UNO)
- With barrel rim holder for secure grip
- Thanks to adjustable height other barrel sizes may be transported safely



**Technical data:**

Tyre size: Ø 260 x 85 mm

Max load kg	B mm	H mm	kg	
160.0223	250.0	700.0	1600.0	13.40

**Transport trolley with full rubber tyres**

- Steel tubular structure with deep welded joints
- Light and agile transportation for use in smallest space
- Effortless receiving and transporting of packages, carton and all other objects
- From round tubes welded together manufactured and solid
- Fold away shovel base
- Equipped with 2 fixed full rubber wheels
- Safety handles and slip protection
- Perfectly suitable in industry and business



**Technical data:**

Tyre size: Ø 255 x 46 mm  
Shovel/base dimensions: B 340 x T 520 mm

Max load kg	L mm	B mm	H mm	kg	
160.0229	250.0	620.0	400.0	1100.0	19.00

**Bottle trolley**

- Steel tubular structure with deep-welded joints
- Ideal for the storage of 10 litre nitrogen bottles
- With safety chain for transport
- Includes hose attachment
- Integrated tray for accessories
- Stable fully-rubber wheels
- Secure and easy to use
- Special steel



Length mm	Width mm	Height mm	kg	
160.0247	275.0	305.0	1170.0	4.46

## KEY CHAIN

### Key chain, blank

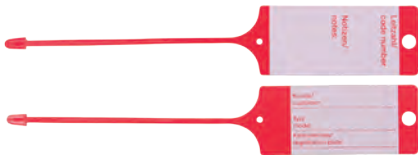
- Ideal for identifying car keys
- With blank area for writing
- Easy to write with a marker
- From stable PVC
- With re-closeable band



Colour code	Content	
500.8018	500	420

### Key chain with loop

- Ideal for identifying car keys
- With lined area for writing
- Easy to write with a marker
- From stable PVC
- With re-closeable band



Colour code	Content	
500.8093	500	1.00
500.8094	500	1.00
500.8019	500	1.00

### Key chain set

- Optimal work shop set for organising customers and vehicles
- With 1 x key chain with loop, 1 x customer collection ticket, 1 x mirror hanger and 1 x sticker for the order book
- Numbered from 1-300
- From stable PVC
- Saves time when looking for vehicles



Colour code	Content	
500.8017	300	1.20
500.8016	300	1.20
500.8015	300	1.20



## DOCUMENT POCKETS

### Workshop order pocket DIN A4 with key pocket

- Made out of transparent film with protection entry cover
- High quality meaning the document stay clean and are in closed storage with all working papers
- Key has a special compartment with hook and loop fastener
- The front made out of clear plastic means the working papers are readable without removal
- The reinforced back can be used simultaneously as a letter document
- Stable execution with hanging cord serves also as a letter document



Colour code	L mm	B mm	
500.8095	34.0	24.0	190
500.8096	34.0	24.0	190
500.8097	34.0	24.0	190
500.8098	34.0	24.0	190
500.8099	34.0	24.0	190

## SEAT AND VEHICLE COVERS

### Tape dispenser for steering wheel wrapping foil

- For using the steering wheel wrapping foil
- Simple handling
- Robust PP plastic



Colour code	Length mm	
500.8023	260.0	60
500.8024	260.0	60

### Steering wheel wrapping foil, transparent

- Suitable for wrapping the steering wheel
- Suitable for all steering wheel sizes
- Prevents dirt on the steering wheel
- Easy to use



Material strength µm	L m	Content	
500.8089	150.0	40	12.80

## Single-use steering wheel cover

- For covering the steering wheel
- Suitable for almost all steering wheel sizes
- With elasticated band
- Prevents dirt on the steering wheel
- Supplied in a practical storage case



Colour code	Content	
500.8087	250	2.50

## Single-use gear stick cover

- Ideal for protecting the gear stick
- Fits well with the elastic band
- Ideal for test driving and stays in the work shop
- LDPE plastic
- Supplied in a practical storage case



Colour code	Length mm	Width mm	Content	
500.8092	140.0	145.0	500	2.50

## Single-use hand brake cover

- Ideal for protecting the hand brake
- Fits well with the elastic band
- Ideal for test driving and stays in the work shop
- LDPE plastic
- Supplied in a practical storage case



Colour code	Length mm	Width mm	Content	
500.8071	90.0	160.0	500	2.50

## Single-use seat cover

- For covering the driver or passenger seat
- For seat sizes 820 x 1300 mm
- Ideal for test driving and stays in the work shop
- Prevents dirt on the original seats
- LDPE plastic
- Supplied on a perforated roll



Colour code	Material strength µm	Content	
500.8081	13	500	5.00



**Single-use dual-seat cover**

- For covering the rear seats
- For seat sizes 1500 x 1300 mm
- Ideal for test driving and stays in the work shop
- Prevents dirt on the original seats
- LDPE plastic
- Supplied on a perforated roll



Colour code	Material strength µm	Content	kg	
500.8084	white	13	200	6.00

**Single-use, foot mat**

- Suitable for covering the foot well
- Ideal for test driving and stays in the work shop
- Slip-proof
- Prevents the original foot mats from getting dirty
- Material made from 70 g/m<sup>2</sup> paper and 10 g/m<sup>2</sup> PE
- Supplied on a perforated roll



Length mm	Width mm	Content	kg	
500.8086	380.0	500.0	500	5.00

**Tire bags**

- Protects the vehicle interior when transporting tires
- Ideal for storage in the garage or workshop
- LDPE plastic
- Delivery on perforated roll



Length mm	Width mm	Height mm	Colour code	Content	kg	
500.8088	700.0	350.0	900.0	white	100	4.00

**Wheel bolt bag**

- Ideal for the storage of wheel bolts
- With handy drawstring for closing
- Made from 100% cotton



Content	kg	
500.8032	Wheel bolt bag	20

**Interior protector set 5 in 1**

- Optimal interior protection for customer vehicles
- Easy to use and good fit using elasticated drawstring
- 5 pcs set packed in practical polythene bag
- Footwell protector made from strong, coated material
- Seat, steering wheel, gear knob and handbrake lever protectors made from sturdy single-use film



Content	kg	
500.8110	100	10.00

**Plastic garage, transparent**

- Ideal for protecting paint against rain and the sun
- Suitable for painting in halls
- With elasticated band
- Easy to use
- LDPE plastic



Colour code	Material strength µm	L m	B m	kg	
500.8073	transparent	300	6.5	3.5	460

**Steering wheel protective cover**

- For covering the steering wheel
- Suitably for almost all steering wheel sizes
- Prevents dirt on the steering wheel
- Made out of machine washable nylon material



Content	kg	
500.8075	Steering wheel protective cover	20

**Gear stick protective cover**

- For covering the gear stick
- Suitably for almost all vehicles
- Prevents dirt on the gear stick
- Made out of machine washable nylon material



Content	kg	
500.8070	Gear stick protective cover	10

**Hand brake protection cover**

- For covering the hand brake
- Suitably for almost all hand brakes
- Prevents dirt on the hand brake
- Made out of machine washable nylon material



Content	kg	
500.8080	Hand brake protection cover	10

1

2

3

4

5

6

7

8

9

10

11

12

13

14

15

16

17

18

19

20

21

22

23

24

25

26

### Seat protection cover for single seats

- One piece seat cover
- Made out of machine washable nylon material to cover a front seat
- Suitably for almost all vehicles
- Prevents dirt on the original seat
- Allowed for vehicles with seat airbags
- Therefore also ideal for road tests



			kg
500.8065	Seat protection cover for single seats	125	

### Double protection cover for front or rear seats

- One piece seat cover
- For covering the front seats, the middle console, the door covers and the foot area
- No glass splinters or dirt on the seats, therefore also ideal for glass repairs
- Suitably for almost all vehicles
- Prevents dirt on the original seat
- Made out of machine washable nylon material



			kg
500.8085	Double protection cover for front or rear seats	455	

### Seat cover set

- For covering the steering wheel, gear stick and front seats
- Protection against soiling
- Suitably for almost all vehicles
- Allowed for vehicles with seat airbags
- Ideal for road tests
- Made out of machine washable nylon material



			kg
500.8025	3 pcs Seat cover set	1.13	

consists of:

			kg
500.8065	Seat protection cover for single seats	125	
500.8070	Gear stick protective cover	10	
500.8075	Steering wheel protective cover	20	

### Universal vehicle front end protection cover

- Covers both wings, grill, bumper and lamps therefore protecting during the repair and/or maintenance works
- Universal size therefore suitable for small and medium size vehicles
- Elasticated in the border band
- Wheel cut out for working on the wheels, brakes etc.
- Generous transparent cover for headlamps that enables vehicle lamps testing
- The cut away over the grill permits a trial run whilst the cover is still mounted
- Fleece lamination on one side and easy to clean on the other
- The wing area is reinforced with additional internal protection mat
- Reinforcement over mirror and/or bonnet hinge possible



			kg
500.8035	Universal vehicle front end protection cover	1.00	

### Universal wing cover with sewn-in magnets

- Outer and under side made from high quality nylon
- Grips on car body sheet metals due to the magnet
- Safe protection against scratches, dirt, oil, etc.
- For protecting the wings during repair and maintenance work



	Length mm	Width mm	kg
500.8051	1000.0	640.0	500

### Bodywork protector with sewn-in magnets

- Outer and under side made from high quality nylon
- Grips on car body sheet metals due to the magnet sewn in
- Ideally for the use as the wing protection
- Also as protection against tools for example windscreen replacement



	L mm	B mm	kg
500.8050	1070.0	600.0	900

### Bodywork protector with anti slip matting

- Outer side made from high quality nylon
- Under side made from a special anti slip matting
- Grips on car body sheet metals
- Ideally for the use as the wing protection
- Also as protection against tools for example windscreen replacement



	L mm	B mm	kg
500.8055	900.0	500.0	0.31
500.8060	1200.0	500.0	2.05

### KNEE AND LIE DOWN MATS

#### Mechanics protection mat

- Helps the mechanic to work easier and safer whilst working in the lower area of vehicles on uneven surfaces
- Moisture and dirt resistant
- Work garments and knees stay dry, clean and protected
- 3 layered padded construction from soft material
- Integrated hand grip
- Petrol and oil resistant
- Universal use in workshops, service and breakdown service vehicles



	L mm	B mm	H mm	kg
500.8040	480.0	320.0	36.0	200
500.8045	1220.0	550.0	36.0	760



**Mechanic mat with handle**

- Guarantees safety-conscious working when working under vehicles
- On a flat surface
- Moisture and dirt resistant
- Work clothes and knees remain dry, clean and don't cool down
- Insulated
- Can be folded together
- With integrated carry handle
- Petrol and oil resistant
- Universal use in workshops, service and breakdown service vehicles



	L mm	B mm	H mm	kg
500.8002	1022.0	440.0	40.0	1.05

**CREEPERS / STOOLS**

**Mobile workshop stool**

- Robust and mobile stool
- Storage area for the protection of tools and small parts
- Washable cushion
- Four ball bearing solid rubber wheels
- Maximum capacity up to 90 kg
- Construction from robust steel square tube



	L mm	B mm	H mm	kg
500.8020	440.0	360.0	360.0	4.00

**Mobile and height adjustable workshop stool**

- Robust and mobile stool
- Storage area for the protection of tools and small parts
- Washable cushion
- Hydraulic height adjustment
- Five ball bearing solid rubber wheels
- Maximum capacity up to 90 kg
- Durable metal construction



	B mm	H mm	kg
500.8030	370.0	540.0	4.00

**Workshop creeper**

- Padded head support
- Shaped arm areas for optimal movement freedom
- Includes safe tool recesses
- Six low sound, oil and acid resistant solid rubber direct wheels
- Easy to clean
- Ideal for comfortable working under the vehicle
- Maximum capacity up to 120 kg
- Solid construction made from plastic



	L mm	B mm	H mm	kg
500.8090	1030.0	480.0	115.0	5.00

**Workshop creeper and folding seat**

- For the use of lying and sitting
- Interlocking mechanism against accidental loosening
- Padded execution for fatigue free working
- Tool storage tray in the foot well
- Washable cushion
- Shallow depth for comfortable working under the vehicle
- Adjustable head rest
- Seven low sound, oil and acid resistant solid rubber direct wheels
- Black powder coated metal frame



	L mm	B mm	H mm	kg
500.8000	1200.0	460.0	145.0	12.40



**VEHICLE TROLLEYS**

**Wheel roller set**

- Direct rolls enable the movement in the narrowest of areas
- Ideally for the maneuvering of vehicles on firm ground
- For the space saving storing of vehicles in repair workshops
- Four ball bearing solid rubber wheels



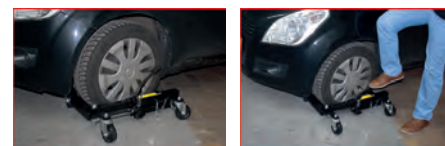
**Technical data:**

Max. tyre size: 13" - 16"  
Wheel diameter: 90.0 mm

	Max load 1 pcs / kg	Max load 4 pcs / kg	Max tyre width mm	kg
160.0375	450,0	1800,0	360,0	10,00

**Hydraulic vehicle mover**

- Universally applicable on driver and passenger side
- Casters allow for the manoeuvring of vehicles in the tightest spaces
- Ideal for manoeuvring vehicles on solid ground
- Easily rolled in any direction
- For the space-saving storage of vehicles in repair breaks
- Ideal for showrooms, body shops, towing companies, etc.
- Easy operation via foot pedal
- With self-lubricating ball bearings
- Four ball bearing solid rubber casters



**Technical data:**

Tyre size: 13" - 19"  
Wheel diameter: 720 mm

	Max load 1 pcs / kg	Max load 4 pcs / kg	Max tyre width mm	kg
160.0412	680	2720	228	16.60

1

2

3

4

5

6

7

8

9

10

11

12

13

14

15

16

17

18

19

20

21

22

23

24

25

26

### Hydraulic vehicle mover

- Universally applicable on driver and passenger side
- Casters allow for the manoeuvring of vehicles in the tightest spaces
- Ideal for manoeuvring vehicles on solid ground
- Easily rolled in any direction
- For the space-saving storage of vehicles in repair breaks
- Ideal for showrooms, body shops, towing companies, etc.
- Easy operation via foot pedal
- With self-lubricating ball bearings
- Four ball bearing solid rubber casters



#### Technical data:

Tyre size: 13" - 19"  
Wheel diameter: 720 mm

	Max load 1 pcs / kg	Max load 4 pcs / kg	Max tyre width mm	kg
160.0413	680	2720	305	16.60

### Hydraulic vehicle mover, aluminium

- Universally applicable on driver and passenger side
- Casters allow for the manoeuvring of vehicles in the tightest spaces
- Ideal for manoeuvring vehicles on solid ground
- Easily rolled in any direction
- For the space-saving storage of vehicles in repair breaks
- Ideal for showrooms, body shops, towing companies, etc.
- Easy operation via foot pedal
- With self-lubricating ball bearings
- Four ball bearing solid rubber casters



#### Technical data:

Tyre size: 13" - 19"  
Wheel diameter: 720 mm

	Max load 1 pcs / kg	Max load 4 pcs / kg	Max tyre width mm	kg
160.0414	680	2720	305	18.44

### Storage and Trolley for vehicle mover

- Universally applicable
- Casters allow for manoeuvring
- Easily rolled in any direction
- For the space-saving housing of hydraulic vehicle movers
- Suitable for 4 vehicle movers
- With self-lubricating ball bearings
- Four ball bearing solid rubber casters



	Length mm	Width mm	Height mm	kg
160.0415	800.0	470.0	230.0	9.64

### WHEEL CHOCKS

### Underlaid sheet metal wedge (pair)

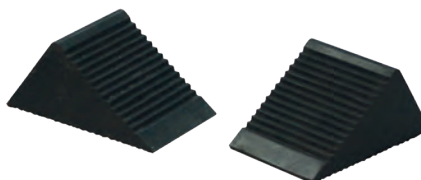
- For securing large vehicles and for load securing
- Optimal slip resistance
- Perforated support surface
- No deformation
- Delivery takes place in pairs
- Heavy version
- Made of sturdy sheet



	Length mm	Height mm	Width mm	kg
160.0381	230.0	220.0	125.0	700

### Underlaid rubber wedge (pair)

- For securing trailers, vehicles and for load securing
- Optimal slip resistance
- Gridded support surface
- No deformation, no rusting
- More durable than plastic or sheet metal wedge
- Delivery takes place in pairs
- Made of solid rubber



	Length mm	Height mm	Width mm	kg
160.0382	105.0	75.0	75.0	660

### Underlaid rubber wedge with handle

- For securing trailers, vehicles and for load securing
- Optimal slip resistance
- Incorporated handle for easy transport
- Gridded support surface
- No deformation, no rusting
- More durable than plastic or sheet metal wedge
- Delivery takes place in parts
- Heavy version
- Made of solid rubber



	Length mm	Height mm	Width mm	kg
160.0383	200.0	150.0	100.0	2.20

### AXLE STANDS AND RAMPS

### Aluminium axle stand set

- Especially light and stable
- High level of stability due to the diameter of the base plate
- Safety locking bolt with chain
- Suits itself especially well in combination with jack for the safe bracing of a load
- Aluminium



	Max load t	Stroke way mm	Min total height mm	Max total height mm	kg
160.0315	3,0	140,0	260,0	400,0	2,20

### Steel chassis stand with quick lock

- Solidly built
- For heavy vehicle weights
- High level of stability due to large sturdy base plate
- Support bar made of cast steel
- Quickly adjustable
- 13-stage quick clamping lever
- Particularly suitable in combination with car jacks for the safe bracing of a load
- Delivery takes place in parts
- Made of solid steel



	Max load t	Min total height mm	Max total height mm	kg
160.0373	10	450.0	750.0	21.50
160.0374	10	650.0	1100.0	26.50
160.0377	20	420.0	660.0	29.00
160.0378	20	665.0	1170.0	29.00
160.0379	30	415.0	640.0	25.50
160.0380	30	675.0	1050.0	35.50



**Spindle support stand**

- Variably adjustable via spindle
- 3-foot chassis stand
- Solidly built
- For heavy vehicle weights
- High level of stability
- Collapsible, so saves a lot of space
- Is particularly suitable in combination with jacks for securing and supporting a load
- Made of solid steel



	Max load t	Min total height mm	Max total height mm	kg
160.0441	12,0	456,0	710,0	17,00
160.0442	12,0	710,0	1065,0	25,00

**Steel axle stands with quick adjustment**

- 4 feet on each stand
- Solid construction
- For heavy vehicles weights
- High level of stability
- Lifting bar made from cast steel
- Quick adjustment (in pairs)
- Height adjustment has 13 stages
- Suits itself especially well in combination with jack for the safe bracing of a load
- Made from solid steel



	Max load t	Stroke way mm	Min total height mm	Max total height mm	kg
160.0370	3,0	130,0	295,0	425,0	8,00
160.0371	6,0	205,0	400,0	605,0	15,00
160.0372	12,0	250,0	480,0	730,0	26,00

**Cars ramp with 185 mm tyre width**

- Robust welded, stable and painted steel construction
- For flexible use
- Can be loaded with 1 t individually or 2 t in pairs
- Design with 185 mm ramp width
- Supplied in pairs
- For all common passenger cars and small transporters



**Technical data:**

max. load capacity / 1 piece: 1.000 kg  
 max. load capacity / 2 pieces: 2.000 kg  
 Max. Tyre width: 185 mm

	Length mm	Width mm	Height mm	kg
160.0314	950,0	290,0	265,0	5,20

**Cars ramp with 225 mm tyre width**

- Robust welded, stable and painted steel construction
- For flexible use
- Can be loaded with 1 t individually or 2 t in pairs
- Design with 225 mm ramp width
- Supplied in pairs
- For all common passenger cars and small transporters



**Technical data:**

max. load capacity / 1 piece: 1.000 kg  
 max. load capacity / 2 pieces: 2.000 kg  
 Max. Tyre width: 225

	Length mm	Width mm	Height mm	kg
160.0319	950,0	340,0	265,0	7,90



**Foldable ramps**

- Robust steel design
- Anti-slip with holes in the surfaces with lateral grooves
- Can be folded together
- Easy to transport with carry handle
- Supplied in pairs
- Can be folded out for loading small items such as lawn mowers, motorcycles, etc.
- Usable as car ramp when folded

**Technical data:**

Ramp height in trestle position with brake block: 160 mm  
 Support wheel surface in trestle position: L 430 x W 250 mm  
 Total length in loading position: 1.95 m  
 Max. load in trestle position/pair: 1,600 kg  
 Max. load as ramp/pair: 520 kg



	Length mm	Width mm	Height mm	kg
160.0318	580,0	250,0	160,0	31,00

**LIFT TECHNOLOGY**

**Scissor steel jack with lever**

- Robust steel spindle
- For all common passenger cars and small transporters
- Light and compact shape



**Technical data:**

max. load: 1500 kg  
 Travel: 330,0 mm

	Length mm	Width mm	Height mm	kg
160.0704	420,0	85,0	110,0	2,26

**Hydraulic bottle jack 2 - 100 t**

- Security valve against overload
- Telescopic piston pole
- Additional spindle for extension (not in 30 and 50 t executions)
- Two piece lever arms
- For heavy vehicles weights
- Especially suitable for narrow hard to access areas
- High level of stability
- Ideally suited in combination with jack for the neutralizing and bracing of a load
- Heavy steel construction



	Max load t	Min total height mm	Max total height mm	Hydraulic lift mm	Screw extension mm	Dimension of base plate mm	kg
160.0350	2,0	181,0	345,0	116,0	48,0	88 x 92	2,90
160.0351	3,0	194,0	372,0	118,0	60,0	92 x 100	3,80
160.0352	5,0	216,0	413,0	127,0	70,0	96 x 112	5,10
160.0354	10,0	230,0	460,0	150,0	80,0	110 x 127	7,10
160.0356	15,0	230,0	460,0	150,0	80,0	113 x 136	9,30
160.0358	20,0	242,0	452,0	150,0	60,0	144 x 155	11,90
160.0359	30,0	285,0	465,0	180,0	-	190 x 155	21,70
160.0360	50,0	300,0	480,0	180,0	-	218 x 176	30,70
160.0349	100,0	335,0	515,0	180,0	-	240 x 260	35,50

1  
2  
3  
4  
5  
6  
7  
8  
9  
10  
11  
12  
13  
14  
15  
16  
17  
18  
19  
20  
21  
22  
23  
24  
25  
26

### Hydraulic vehicle mover

- Universally applicable on driver and passenger side
- Casters allow for the manoeuvring of vehicles in the tightest spaces
- Ideal for manoeuvring vehicles on solid ground
- Easily rolled in any direction
- For the space-saving storage of vehicles in repair breaks
- Ideal for showrooms, body shops, towing companies, etc.
- Easy operation via foot pedal
- With self-lubricating ball bearings
- Four ball bearing solid rubber casters



#### Technical data:

Tyre size: 13" - 19"  
Wheel diameter: 720 mm

	Max load 1 pcs / kg	Max load 4 pcs / kg	Max tyre width mm	kg
160.0412	680	2720	228	16.60

### Hydraulic vehicle mover

- Universally applicable on driver and passenger side
- Casters allow for the manoeuvring of vehicles in the tightest spaces
- Ideal for manoeuvring vehicles on solid ground
- Easily rolled in any direction
- For the space-saving storage of vehicles in repair breaks
- Ideal for showrooms, body shops, towing companies, etc.
- Easy operation via foot pedal
- With self-lubricating ball bearings
- Four ball bearing solid rubber casters



#### Technical data:

Tyre size: 13" - 19"  
Wheel diameter: 720 mm

	Max load 1 pcs / kg	Max load 4 pcs / kg	Max tyre width mm	kg
160.0413	680	2720	305	16.60



### Hydraulic vehicle mover, aluminium

- Universally applicable on driver and passenger side
- Casters allow for the manoeuvring of vehicles in the tightest spaces
- Ideal for manoeuvring vehicles on solid ground
- Easily rolled in any direction
- For the space-saving storage of vehicles in repair breaks
- Ideal for showrooms, body shops, towing companies, etc.
- Easy operation via foot pedal
- With self-lubricating ball bearings
- Four ball bearing solid rubber casters



#### Technical data:

Tyre size: 13" - 19"  
Wheel diameter: 720 mm

	Max load 1 pcs / kg	Max load 4 pcs / kg	Max tyre width mm	kg
160.0414	680	2720	305	18.44

### Storage and Trolley for vehicle mover

- Universally applicable
- Casters allow for manoeuvring
- Easily rolled in any direction
- For the space-saving housing of hydraulic vehicle movers
- Suitable for 4 vehicle movers
- With self-lubricating ball bearings
- Four ball bearing solid rubber casters



	Length mm	Width mm	Height mm	kg
160.0415	800.0	470.0	230.0	9.64

### Hydraulic aluminium trolley jack

- Especially light aluminum jack
- Shallow depth for comfortable working under the vehicle
- Large base for safe standing
- Controlled releasing through the turning of the pump lever
- Raising with small pump lifts to the maximum height
- Good maneuverability through two oil and acid resistant nylon direct castors
- Integrated screw tray
- The lower area of the pump lever is coated with foam material
- Lifting plate diameter 120 mm
- Problem free movement due to lightweight and secure handling
- Ideally suited for the use in service vehicles and workshop use
- Extremely heavy aluminium construction



	Max capacity t	Stroke way mm	Min total height mm	Max total height mm	Total length mm	Screw tray plate	kg
160.0365	2,0	385,0	85,0	470,0	630,0	160.0361	20,00
160.0369	3,0	405,0	100,0	510,0	690,0	160.0361	26,00

### Hydraulic steel trolley jack 3 t

- Large base for safe standing
- Controlled releasing through the turning of the pump lever
- Raising with small pump lifts to the maximum height
- Good maneuverability through two oil and acid resistant nylon direct castors
- Integrated screw tray
- The lower area of the pump lever is coated with foam material
- Lifting plate diameter 140 mm
- Overload protection through pressure relief valve
- Ideally suited for daily workshop use
- Heavy steel construction



	Max capacity t	Stroke way mm	Min total height mm	Max total height mm	Total length mm	Screw tray plate	kg
160.0366	3,0	410,0	125,0	535,0	720,0	160.0362	43,00



**Hydraulic steel trolley jack**

- Very shallow depth for comfortable working under the vehicle
- Large base for safe standing
- Raising with the pump lever and foot lever is possible
- Foot pedal for the bridging of the empty stroke
- Controlled releasing through the turning of the pump lever
- Raising with small pump lifts to the maximum height
- Good maneuverability through two oil and acid resistant nylon direct castors
- Integrated screw tray
- The lower area of the pump lever is coated with foam material
- Lifting plate diameter 120 mm
- Overload protection through pressure relief valve
- Ideally suited for daily workshop use
- Heavy steel construction



	Max capacity t	Stroke way mm	Min total height mm	Max total height mm	Total length mm	Spare lifting plate	kg
160.0367	2,0	420,0	70,0	490,0	700,0	160.0363	43,00
160.0368	3,0	440,0	90,0	530,0	800,0	160.0363	54,00

**Hydraulic steel trolley jack**

- Slightly lower load depth for modern automobile car bodies
- Large base for safe standing
- Automatic ventilation of the hydraulic systems
- Overload protection through overload pressure valve
- Raising with the hand and foot lever is possible
- Foot pedal for the bridging of the empty stroke
- The lower area of the pump lever is coated with foam material
- Controlled releasing through the turning of the pump lever
- Lifting plate diameter 140 - 170 mm
- Good maneuverability through oil and acid resistant nylon direct castors
- Ideally suited for daily workshop use
- Durable steel construction



	Max capacity t	Stroke way mm	Min total height mm	Max total height mm	Total length mm	Spare lifting plate	kg
160.0702	5,0	400,0	160,0	560,0	1481,0	160.0364	125,00
160.0703	10,0	400,0	170,0	570,0	1560,0	160.0364	170,00

**Hydraulic transmission jack**

- Ideal for installing and removing motors, transmissions, couplings, etc.
- Uncomplicated lifting with hydraulic foot pump
- Continuous adjustment allows for precise positioning
- Slow release of the load possible with hand wheel
- Includes overload valve
- With integrated safety stop handle
- High stability due to wide wheel spacing
- Good manoeuvrability through four oil and acid resistant nylon direct castors
- Extra-large covering for lifting
- Wide wheel spacing ensures more stability and manoeuvrability when loaded
- Robust shape



	Max load kg	Min total height mm	Max total height mm	Width mm	kg
160.0327	300	1200,0	2040,0	610,0	32,00
160.0324	500	1200,0	2040,0	610,0	34,00
160.0329	1000	1200,0	2040,0	610,0	48,00

**Hydraulic transmission lever with adjustable and inclining table**

- Ideal for the safe installing and removing of motors, transmission, couplings, etc.
- Tough design
- Uncomplicated lifting with hydraulic foot pump
- Continuous adjustment allows for precise positioning
- Especially wide working area
- Slow release of the load possible with the foot pump
- Includes overload valve
- With integrated safety stop handle
- Ground plate can be inclined and adjusted into position/horizontal + 40 mm/inclination -10°/+20°
- Includes 420 mm wide support rail with support chains for secure tensioning
- Chains can be adjusted from 130-430 mm
- High stability due to wide wheel spacing
- Transmission holder attached to the piston rod
- Includes transmission holder
- Good manoeuvrability through four oil and acid resistant nylon direct castors
- Extra-large covering for lifting
- Wide wheel spacing ensures more stability and manoeuvrability when loaded
- Robust shape



	Max load kg	Min total height mm	Max total height mm	Length mm	Width mm	kg
160.0334	500	880,0	1870,0	700,0	800,0	67,00

**Hydraulic aluminium trolley jack 3 t**

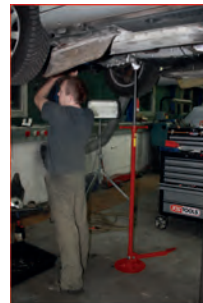
- Especially light aluminium jack
- Shallow depth for comfortable working under the vehicle
- Large base for safe standing
- Controlled releasing through the turning of the pump lever
- Raising with small pump lifts to the maximum height
- Good maneuverability through two oil and acid resistant full steel direct castors
- Integrated screw tray
- The lower area of the pump lever is coated with foam material
- Lifting plate diameter 120 mm
- Problem free movement due to lightweight and secure handling
- Ideally suited for the use in service vehicles and workshop use
- Extremely heavy aluminium construction



	Max capacity t	Stroke way mm	Min total height mm	Max total height mm	Total length mm	Spare lifting plate	kg
160.0305	3,0	360,0	105,0	465,0	680,0	160.0317	33,00

**Underhoist stand with pedal**

- Ideal for all work under the vehicle when extra support is needed
- Stable trapeze threaded spindle
- Secure stand thanks to the large foot
- Fully adjustable
- Smooth-operating with axial bearings
- Foot pedal for precise adjustments (20 mm)
- The ideal workshop assistant in many situations



	Load capacity kg	Min total height mm	Max total height mm	kg
160.0342	750	1360,0	2030,0	15,00

## ENGINE STAND

### Engine stand

- Ideally suited to working on removed engines
- 4 pickup points are adjustable in angle and distance
- Pickup plates mounted at 360°
- Stable construction
- Secure stand in 4 steel castors
- Good manoeuvrability thanks to 2 swivelling castors with clamp brakes
- Less space required when folded



#### Technical data:

max. load: 680 kg

	Length mm	Width mm	Height mm	kg
160.0364	803.0	688.0	868.0	35.30

## WORKSHOP WINCHES

### Workshop crane with fixed chassis

- Hand lever pump for lifting
- Finely controllable reduction valve
- Made out of rectangle pipe, welded frame
- Stable construction
- Safety load hooks
- Telescopic crane jib with 4 sided adjustment of the length
- 2 fixed and 2 controllable castors (due to this there is problem-free positioning over the load to be lifted)
- Flat feet enable a simple access under low vehicles
- Good maneuverability due to the ball bearing metal castors
- Adjustable load capacity
- Chassis in slightly splayed form and can be folded away
- Ideal for lifting works in the motor vehicle workshop
- For the removal and replacement engines
- Raising of motorcycles in special works



	Max load kg	H mm	L mm	A mm	kg
160.0011	1000	1750.0	1550.0	620.0 - 1250.0	100.00

## Folding workshop crane

- Hand lever pump for lifting
- Finely controllable reduction valve
- Made out of rectangle pipe, welded frame
- Stable construction
- Safety load hooks
- Telescopic crane jib with 4 sided adjustment of the length
- 2 fixed and 2 controllable castors (due to this there is problem free positioning over the load to be lifted)
- Flat feet enable a simple access under low vehicles
- Good maneuverability due to the ball bearing metal castors
- Adjustable load capacity
- Chassis in slightly splayed form and can be folded away
- Ideal for lifting works in the motor vehicle workshop
- For the removal and replacement of engines
- Raising of motorcycles in special works



	Max load kg	H mm	L mm	A mm	kg
160.0015	1000	1440.0	1550.0	1006.0 - 1330.0	71.00

## Load positioning device

- Makes balancing the load on the crane easier depending on the shape of the parts to be lifted during installation and assembly
- Easy balance adjustment with the hand lever
- Supplied with 4 load chains
- Axle distance 330 mm
- Can be combined with work shop crane for units like the engine block, transmission, etc.



#### Technical data:

max. load: 500 kg

	Height mm	Width mm	kg
160.0018	545.0	520.0	5.60

## ENGINE AND TRANSMISSION ENGINES

### Engine assembly jig

- The 2 spindles are on specially stored also under load are movable and detectable
- Fast adaptation on the desired engine compartment width due to the adjustable support feet
- Conformity to the strong engine compartment inclination through revolving electro galvanized support feet
- Quick safe and problem free positioning of the engine take off and installation of the transmission without additional exclusion from below
- Locking screw
- Electrostatic powder coating



	Max load kg	Max width mm	kg
160.0145	400	1610.0	15.20

### Universal engine supporting beam

- Highest flexibility thanks to adjustable and flexibly positionable construction
- Universal usage
- Simple handling and quick repair
- Hooks rotatable and adjustable in longitudinal direction
- Supporting plates height adjustable with non slip feet
- Secure supporting of engine or transmission
- Assembly and access unhindered below possible, through it to the engine compartment
- Special steel

**Application range:** Timing belt changing, clutch changing, etc.



	L1 mm	L2 mm	H mm	kg
160.0090	1020.0	510.0	300.0	8.60





**Universal assembly stool**

- Ideal for installing and removing engines, transmission and support frames
- Suitable for transmission jacks with an attachment diameter of 25, 30 and 35 mm
- With four arms that can swivel sideways and can be adjusted in length
- For up to 75 kg
- Support plate height-adjustable with anti-slip support
- Simple handling and quick assembly
- Stable construction
- Special steel



	Length mm	kg
160.0146	700,0 - 960,0	13.00

**USED OIL RUN OFF DEVICE**

**Flexible funnel with aluminium body**

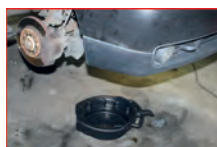
- Ideally suited to a clean and control draining of all fluids, e.g. oil, coolant, brake fluid, fuel, etc.
- Resistant to petrol, diesel, oil, coolant, hydraulic and brake fluid
- Also suitable as a funnel for filling
- Shape is maintained and can be altered at any time
- Free malleable, therefore can be adapted for extremely tight spaces
- Problems with draining fluids are a thing of the past
- The heavy-duty construction can be fit to any desired shape and used again
- Easy to clean
- Temperature resistance of -34 to +232 °C
- Aluminium frame
- Outer skin made from nitrile rubber



	Length mm	Width mm	kg
150.9303	372.0	170.0	240

**Oil drain pan 7.5 litres**

- With three carry handles
- Safe and clean pouring with the self-contained overflow edge and spout
- Ideally suited to collecting different fluids
- Suitable for oil, chemicals, petrol, acid and anti-freeze fluid
- Also suitable for cleaning parts
- Practical, quick and friendly to the environment
- Shock-proof



	Ø mm	H mm	kg
150.9359	385,0	130,0	620

**Oil drain pan 8 litres**

- With three carry handles
- Safe and clean pouring with the spout
- Ideally suited to collecting different fluids
- Suitable for oil, chemicals, petrol, acid and anti-freeze fluid
- Also suitable for cleaning parts
- Practical, quick and friendly to the environment
- Screwed connection with rubber seal for safe transport
- Shock-proof



	B mm	H mm	L mm	kg
150.9357	340.0	120.0	600.0	1.06

**Oil drain pan 17 litres**

- With three carry handles
- Safe and clean pouring with the self-contained overflow edge and spout
- Ideally suited to collecting different fluids
- Suitable for oil, chemicals, petrol, acid and anti-freeze fluid
- Also suitable for cleaning parts
- Practical, quick and friendly to the environment
- Shock-proof



	Ø mm	H mm	kg
150.9360	445,0	145,0	1.16

**Oil drain pan 17 litres**

- With three carry handles
- Safe and clean pouring with the self-contained overflow edge and spout
- Ideally suited to collecting different fluids
- Suitable for oil, chemicals, petrol, acid and anti-freeze fluid
- Also suitable for cleaning parts
- Practical, quick and friendly to the environment
- Shock-proof



	Ø mm	H mm	kg
150.9361	445,0	145,0	1.16



**Mobile oil drain pan, 30 litres, extra flat with castors**

- With five carry handles
- 12.0 cm high, extra flat edges
- Safe and clean pouring with the closed contained and spout
- Ideally suited to collecting different fluids
- Suitable for oil, chemicals, petrol, acid and anti-freeze fluid
- Also suitable for cleaning parts
- With four steerable castors
- Practical, quick and friendly to the environment
- Includes removable sieve
- Screwed connection with rubber seal for safe transport
- Shock-proof



	B mm	H mm	L mm	kg
150.9354	600.0	120.0	850.0	5.60

1

2

3

4

5

6

7

8

9

10

11

12

13

14

15

16

17

18

19

20

21

22

23

24

25

26

### Oil drain pan 55 litres, extra flat

- With four carry handles
- 11.0 cm high, extra flat edges
- Safe and clean pouring with the self-contained overflow edge and spout
- Ideally suited to collecting different fluids
- Suitable for oil, chemicals, petrol, acid and anti-freeze fluid
- Also suitable for cleaning parts
- Practical, quick and friendly to the environment
- Shock-proof
- Polyethylene



	L mm	B mm	H mm	kg
150.9358	1030.0	724.0	110.0	6.80

### Vacuum fluid extractor suction pump 9.5 litre

- Ideal for quick, clean and simple suction, intake and emptying of fluids
- Suitable for engine oil, transmission oil, hydraulic oil, brake fluid, water, etc.
- For pneumatic use with a compressor or manual use with the integrated hand pump
- Select a suitable probe and suck easily using the vacuum principle
- Suction process automatically stopped when housing is full, preventing fluids from spilling over
- With integrated pressure relief valve for more safety
- With high-quality pump housing and strengthened pump head
- Includes 4 probes for different uses
- Ideally suited to hard-to-reach places thanks to the included, long suction hose
- The suction hose is resistant to petrol and oil
- Polyethylene

**Application range:** Passenger cars, transporters and MPVs, commercial vehicles, tractors, agricultural and construction machinery, industrial uses



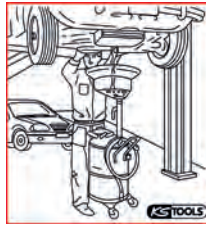
#### Technical data:

Work pressure:	5-11,5 bar
Capacity:	9.5 l
Operating temperature:	+0 °C to +55 °C
Filling tube length:	1.5 m
Max. flow rate:	125 l/min

	kg
160.0790 5 pcs Vacuum fluid extractor suction pump 9.5 litre	5.00

### Mobile oil draining device 60 litre

- Basic unit for old oil capture and re-filling
- Pneumatic pressure emptying with manometer and safety valve
- Emptying takes approximately 3 minutes at 0.8 bar
- Heavy deposits can also be removed via a plate on the underside
- Mobile and connectible container with extra-large plastic wheels
- With carry handle
- Stop cock and clamping screws to release pressure
- Extremely manoeuvrable and ideal for workshop design
- Centrally mounted and height-adjustable round drip pan
- Side filling display with measuring scales
- Includes clear fabric hose for draining



#### Technical data:

Capacity of container:	60 l
Capacity of catch:	ca.16 l
Collection container dimensions:	490 x 580 x 1040 mm
Collection pan dimensions:	Ø 380 mm
Height adjustment:	1040 - 1700 mm

	kg
160.0001	60
	32.00

## WORKSHOP EQUIPMENT

### Mobile cleaning station for small parts

- Mounted metal reservoir with 60 l tank capacity
- Includes compressed air operated drying pistol
- Cleaning brush with strong bristles
- Emptying of the collecting container by means of pneumatic air
- Includes level indicator display
- Safety valve for the vacuum production and pressure emptying
- High quality 2 m tube and compressed air pistol
- Good maneuverability due to the two solid rubber direct castors
- Storage compartment for small parts
- Includes stop handles
- Especially suitable for use in the car industry
- Ideally suited for removing of stubborn soiling
- Base unit made out of cast iron



#### Technical data:

Operating pressure:	6,3 bar (90 psi)
Collecting tank:	500 x 810 x 130 mm

	L mm	B mm	H mm	kg
160.0040	490.0	580.0	1040.0	54.00

## TRANSMISSION OIL FILLING DEVICE

### Syringe for fluid change 0.2 l

- Ideal tool for decanting, removing or dosing liquids to transmissions, power steering, hydraulics, engines, etc.
- Suitable for fuel oil, water and antifreeze
- Fine dosing
- Overflowing material can be pumped back problem-free
- Includes rubber hose
- Robust metallic design



	Tube inner Ø mm	Hose external Ø mm	tube length mm	housing length mm	kg
150.1684	0.2	8	10	290	290
					365

### Syringe for fluid change 0.2 l

- Ideal tool for decanting, removing or dosing liquids to transmissions, engines (sic) power steering, hydraulics, engines, etc.
- Suitable for fuel oil, water and antifreeze
- Fine dosing
- Overflowing material can be pumped back problem-free
- Includes rubber hose with flow stop cap
- Robust PP design



	Tube inner Ø mm	Hose external Ø mm	tube length mm	housing length mm	kg
150.9221	0.2	6	8	210	210
					245

### Syringe for fluid change 1.5 l

- Ideal tool for decanting, removing or dosing liquids to transmissions, engines (sic) power steering, hydraulics, engines, etc.
- Suitable for fuel oil, water and antifreeze
- Fine dosing
- Overflowing material can be pumped back problem-free
- Includes rubber hose with flow stop cap
- Robust PP design



	Tube inner Ø mm	Hose external Ø mm	tube length mm	housing length mm	kg
150.9222	1.5	14	16	320	320
					900



**DSG transmission oil filling hose for VAG**

- Ideal for problem-free, simple and clean filling and refilling
- Exact dosing
- For different direct shift gearboxes
- The return valve prevents dirtying from unintentional oil spills
- The oil fill adapter is screwed directly onto the 1 litre oil container tank
- Suitable for many manufacturers and industry standard oil container tanks (VAG G 052 182 A2)
- Robust aluminium connection adapter

**Application range:** Audi, Seat, Škoda and Volkswagen with DSG transmission



	Transmission thread	tube length mm	
150.9220	M24x1,5mm	1500	270

**CVT transmission oil filling hose for VAG**

- Ideal for problem-free, simple and clean filling and refilling
- Exact dosing
- For different stage-free transmission
- The return valve prevents dirtying from unintentional oil spills
- The oil fill adapter is screwed directly onto the 1 litre oil container tank
- Suitable for many manufacturers and industry standard oil container tanks (VAG G 052 180 A2)
- Robust aluminium connection adapter

**Application range:** Audi, Seat, Škoda and Volkswagen with CVT transmission (Multitronic)



	Transmission thread	tube length mm	
150.9223	M22x1,5mm	2000	360

**Haldex transmission filling hose for VAG**

- Ideal for problem-free, simple and clean filling and refilling
- Exact dosing
- For various Haldex transmissions
- The return valve prevents dirtying from unintentional oil spills
- The oil fill adapter is screwed directly onto the 1 litre oil container tank
- Suitable for many manufacturers and industry standard oil container tanks (VAG G 055 175 A2)
- Robust aluminium connection adapter

**Application range:** Audi, Seat, Škoda and Volkswagen with Haldex transmission



	Transmission thread	tube length mm	
150.9224	M10x1,0mm	2000	260

**DSG transmission oil filling hose for Audi**

- Ideal for problem-free, simple and clean filling and refilling
- Exact dosing
- For different direct shift gearboxes
- The return valve prevents dirtying from unintentional oil spills
- The oil fill adapter is screwed directly onto the 1 litre oil container tank
- Suitable for many manufacturers and industry standard oil container tanks (VAG G 052 529 A2)
- Robust aluminium connection adapter

**Application range:** Audi (>2008) with DSG transmission



	Transmission thread	tube length mm	
150.9229	M24x1,5mm	2000	360

**Universal transmission oil filling system set incl. 15 piece adapter set**

- Ideal for filling transmission, distributor transmission and differentials of different vehicle manufacturers with oil
- Large coverage of many vehicle manufacturers in particular with universal adapter
- Many transmission cannot be filled without this tool
- Optimal for narrow places or hard-to-reach places
- Includes 15 piece adapter set with various angle tails for correct and economic filling
- Quick filling by unscrewing the pump units is possible
- Precise hand pump
- Includes return flow function
- For difficult-to-access areas
- Secure stand thanks to large base
- Container with filling level scale
- Easy to use and saves time

**Application range:** Audi, Ford, BMW, Mercedes, Volkswagen, Škoda, Volvo, Toyota, Lexus, Nissan, Infinity etc.



**Technical data:**  
 Capacity: 7.5  
 Tube length: 1600.0 mm  
 Tube diameter: 1/2"  
 Quantity per stroke: 80 cc  
 Viscosity: - SAE 140

150.9275	16 pcs Universal transmission oil filling system set incl. 15 piece adapter set	4.80

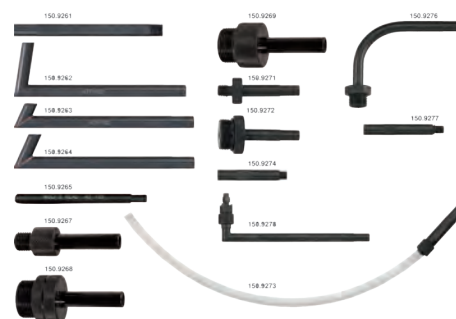
consists of:

150.9258	Transmission oil filling device without adapter	3.50
150.9279	Transmission oil filling adapter set 15 piece	1.30

**Universal transmission oil filling adapter set**

- Ideal for filling transmission, distributor transmission and differentials of different vehicle manufacturers with oil
- Large coverage of many vehicle manufacturers in particular with universal adapter
- Many transmission cannot be filled without this tool
- Optimal for narrow places or hard-to-reach places
- With various angle tails for correct and economic filling
- For difficult-to-access areas
- Easy to use and saves time
- In durable plastic storage case

**Application range:** Audi, Ford, BMW, Mercedes, Volkswagen, Škoda, Volvo, Toyota, Lexus, Nissan, Infinity etc.



150.9279	15 pcs	Universal transmission oil filling adapter set	1.30

consists of:

150.9261	Adapter pipe straight, Ford, Ø 10 GL=120 x AL = 110 with thread	43
150.9262	Angled adapter pipe, universal, Ø 10 GL = 140 x 45 mm	65
150.9263	Angled adapter pipe, VAG, Ø 10 GL = 150 x 18 mm	58
150.9264	Angled adapter pipe, VAG, Ø 10 GL = 150 x 30 mm	61
150.9265	Adapter pipe straight, VAG, Ø 10 GL = 100 x AL = 85 with thread	33
150.9267	Screw adapter, Mercedes transmission number 722.9, M12 x 1.5	53
150.9268	Screw adapter, VAG DSG, M24 x 1.5	110
150.9269	Screw adapter, VAG CVT, M22 x 1.5	90
150.9271	Screw adapter, Škoda, M18 x 1.5	65
150.9272	Screw adapter, Škoda/VAG, M30 x 1.5	150
150.9273	Flexible universal adapter, 300 mm	35
150.9274	Adapter line for Volvo, 5/16"-24"	22
150.9276	Adapter line for Toyota/Lexus, M18 x 1.5	89
150.9277	Adapter line for Nissan/Infinity, M8 x 1.0	25
150.9278	Angled ATF adapter for Volkswagen Passat	93

**OILER**

**Pneumatic tool oil**

- For the lubrication of pneumatic tools
- With lockable nozzle
- Contents 100 ml



	B mm	L mm	
515.3361	60.0	148.0	250

### Precision oiler

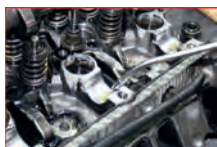
- In ball point pen form
- Practical pocket clip
- Protective cap
- Oil dosage through pushing a button
- Smallest angles and corners reached
- Suitable for a wide range of applications
- Light aluminium housing



	D mm	L1 mm	L2 mm	g
550.1035	15.0	140.0	50.0	50

### Metal oil can with pump

- The oil can also be supplied by a pressure lever with a single working pump
- The pump station allows for a dosed drip delivery
- The front curved injection pipe (145 mm) is made from aluminium
- With chrome plated pump handle
- 300 ml capacity
- Ergonomic construction
- Red lacquer



	Content	Height mm	Ø mm	g
150.9204	300	100.0	70,0	220

### GREASE GUN

#### Grease nipple cleaner

- For cleaning clogged grease nipples, slides and guides
- Suitable for pressing out of old and hardened grease
- No changing of the grease nipple necessary
- Includes flexible extension
- In durable plastic storage case



	Total length mm	tube length mm	g
980.1015	355.0	145.0	550

### Mini grease gun

- Grease gun for maintenance work
- Precise, exact dosage per pressure button with return spring
- For tubes
- Includes long, rigid nozzle
- Tube contents 100 g



	Replacement tube	g
980.1070	980.1075	205

### Mini grease gun set

- Grease gun for maintenance work
- Precise, exact dosage per pressure button with return spring
- For exchangeable cartridges and bucket goods
- Includes long, rigid nozzle and an additional nozzle extension
- Tube contents 110 g



		g
980.1095	3 pcs Mini grease gun set	265

#### accessories:

		g
980.1096	Lubricant 110 g	110
980.1097	Replacement tip for mini grease gun, 1 mm	1
980.1098	Replacement tip for mini grease gun long execution	30

### Manual lever grease gun with flexible tube

- For cartridges and buckets and/or also for loose grease
- Fill capacity 400 g
- Flexible tube
- Chrome plated and mirror polished



	D mm	L mm	g
980.1010	57.0	370.0	1.30

### Single handed grease gun with rigid grease tube

- Perfect single handed usage
- For cartridges and buckets and/or also for loose grease
- Fill capacity 400g
- Rigid grease tube
- Chrome plated and mirror polished



	D mm	L mm	g
980.1020	57.0	350.0	1.80

### Two-hand grease gun

- For working with grease up to NLGI2
- Grease gun piston diameter 10.0 mm
- Quick and clean cartridge changes
- Clean and complete emptying of the cartridge
- Fill levels can be checked at all times
- Ergonomic anti-slip handle



#### Technical data:

Connection thread:	M10 x 1,0
Operating pressure:	400 bar
Burst pressure system (bar):	850 bar
Burst pressure grease gun head (bar):	1200 bar
NLGI class:	< 2
Output per stroke cm <sup>3</sup> :	2.10 cm <sup>3</sup>
Capacity:	500g

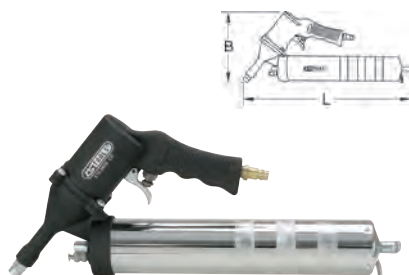
	Total length mm	tube length mm	g
980.1021	650.0	300.0	1.06





**Pneumatic grease gun**

- Air exhaust through the handle
- For one handed operation with balanced ergonomic design
- For cartridges and bucket goods and/or also for loose grease
- Includes rigid and flexible filling tubes high pressure tube
- Cold insulated handle
- Includes 1/4" coupling connector



**Technical data:**

Output pressure: 260 bar  
 Hauling capacity: 288 cm<sup>3</sup>/min  
 Capacity: 400g  
 Air consumption: 170 l/min  
 Operating pressure: 6,3 bar (90 psi)  
 Connection thread: 1/4"PT

	B mm	L mm	kg
515.3900	165.0	400.0	1.80

**Flexible hose with nozzle**

- Made from rubber
- Includes four-jaw nozzle
- For use with the manually operated grease gun



	Ø mm	Total length mm	kg
980.1011	M10x1,0	300.0	60
980.1012	M10x1,0	500.0	70

**Nozzle**

- Made from metal
- Four-jaw nozzle
- For use with the manually operated grease gun



	Ø mm	kg
980.1013	M10x1,0	30

**Nozzle extension**

- Made from metal
- Includes four-jaw nozzle
- For use with the manually operated grease gun



	Ø mm	Total length mm	kg
980.1014	M10x1,0	160.0	70

**Grease gun adaptor set**

- For standard hand, cordless and pneumatic grease guns
- Adaptor with sliding sleeve for break-proof connection
- Straight and angled grease nipple
- For grease nipples out of steel, brass and stainless steel

**Application range:** Cone, funnel, ball and flat grease nipples



	kg
980.1100 7 pcs Grease gun adaptor set	1.90

**consists of:**

	L mm	kg
980.1101 90° Lubricant adaptor	114.0	150
980.1102 Tube extension, 300 mm	390.0	240
980.1103 Straight extension	155.0	230
980.1104 90° flat nipple adaptor	135.0	160
980.1105 Rubber grease tip	155.0	150
980.1106 Needle shaped tip	135.0	143
980.1107 360° Adaptor, adjustable	185.0	265

**Cordless grease gun 400 ml**

- Handy and ergonomic dual component housing
- For standard grease cartridges or direct filling
- Ideal for heavy greasing with counter pressure
- With flexible 750 mm filling tube
- Carbon brushes interchangeable
- With lithium ion high performance rechargeable battery
- With a rechargeable battery that can be process up to 15 cartridges
- Longer running time through higher load capacity
- Fast charging function (1 hour)
- Automatic turn off charging station
- In durable plastic storage case



**Technical data:**

Operating pressure: 420 bar / 42 MPa  
 NLGI class: < 2  
 Grease filling: 75 g / min  
 Capacity of the unit: 600 ml  
 No load current: 3 A  
 Operating current: 2,0 ~ 5,5 A  
 Charging time: 1 hour  
 Rechargeable battery: 18 V - 3,0 Ah

	L mm	B mm	H mm	Spare carbon brushes set	Battery pack	Number of Charger batteries	kg
515.3559	237.0	80.0	487.0	515.3596	515.3599	0	5.40
515.3560	237.0	80.0	487.0	515.3596	515.3599	1	6.70
515.3561	237.0	80.0	487.0	515.3596	515.3599	2	7.50

**SUCTION AND FILLING HAND PUMPS**

**Battery cell filler**

- Ideal aid for the drip-free filling or aspiration of battery acid
- Suitable for battery acid and distilled water
- With rubber ball and rubber tube
- Special plastic
- Resistant to oil, petrol and acid



	L1 mm	L2 mm	kg
160.0738	245.0	130.0	92

**Battery filler bottle**

- Ideal aid for drip-free filling
- Suitable for battery acid and distilled water
- Acid-resistant
- With flexible rubber tube
- Special plastic



	kg
550.1701 1 l	300

**Automatic battery cell filler, 2 litres**

- Ideal aid for drip-free filling
- Stops automatically if the optimal filling level is reached
- With automatic closure
- The built-in special valve in the cylinder head automatically stops the flow when the fill level is reached
- Suitable for battery acid and distilled water
- Acid-resistant
- Special plastic



	kg
550.1683 2 l	300

### Mini transfer pump

- Ideal aid for transferring in emergencies
- Suitable for battery acid, fuels, oils and distilled water
- The hoses are attached to the balloon holder using supplied hose clamps
- Acid-resistant
- Special plastic



	Tube inner Ø mm	Tube length mm	Weight g
150.1665	8.0	2 x 900	320

### Transfer pump

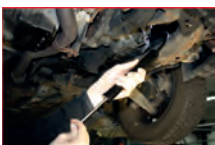
- Ideal aid for easy transferring and pumping
- Suitable for battery acid, fuels, oils and distilled water
- Acid-resistant
- With high quality pump body and reinforced pump handle
- Special plastic



	Tube inner Ø mm	Tube length mm	Weight g
150.1660	12.0	2 x 1.300	465

### Syringe for fluid change 0.2 l

- Ideal tool for decanting, removing or dosing liquids to transmissions, power steering, hydraulics, engines, etc.
- Suitable for fuel oil, water and antifreeze
- Fine dosing
- Overflowing material can be pumped back problem-free
- Includes rubber hose
- Robust metallic design



	Tube inner Ø mm	Hose external Ø mm	Tube length mm	Housing length mm	Weight g
150.1684	0.2	8	10	290	365

### Syringe for fluid change 0.2 l

- Ideal tool for decanting, removing or dosing liquids to transmissions, engines (sic) power steering, hydraulics, engines, etc.
- Suitable for fuel oil, water and antifreeze
- Fine dosing
- Overflowing material can be pumped back problem-free
- Includes rubber hose with flow stop cap
- Robust PP design



	Tube inner Ø mm	Hose external Ø mm	Tube length mm	Housing length mm	Weight g
150.9221	0.2	6	8	210	245

### Syringe for fluid change 1.5 l

- Ideal tool for decanting, removing or dosing liquids to transmissions, engines (sic) power steering, hydraulics, engines, etc.
- Suitable for fuel oil, water and antifreeze
- Fine dosing
- Overflowing material can be pumped back problem-free
- Includes rubber hose with flow stop cap
- Robust PP design



	Tube inner Ø mm	Hose external Ø mm	Tube length mm	Housing length mm	Weight g
150.9222	1.5	14	16	320	900

### 2 direction suction and filling hand pump

- Ideal for bleeding and filling of fluids
- With ball valve to select between suction and pressure
- Suck and press with every way
- Wear-resistant and temperature resistant
- For difficult to reach openings
- With 2 tubes
- Suction tube clear Ø 1 x E: 10x16 mm, length 600 mm
- Pressure tube fabric-reinforced Ø 1 x E: 16x21mm, length 600 mm
- For brake fluid, motor / transmission oil, petrol, diesel, fuel oils, spirit, petroleum, antifreeze etc.
- Robust aluminum piping

**Application range:** Vehicle/trucks workshops, land and construction machines, municipally and forestry technology, etc.



	Stroke mm	Content	L mm	Ø mm	Weight g
150.9255	208.0	256	808.0	40	662
150.9256	255.0	720	855.0	60	884

### Dispense hand pump PVC, 1,000 ml with tube

- For the controlled bleeding and filling of fluids
- Exact dosage per scale
- High suction
- For difficult to reach openings
- For brake fluid, motor / transmission oil, petrol, diesel, fuel oils, spirit, petroleum, antifreeze etc.
- Fabric-reinforced PVC tube
- PVC cylinder

**Application range:** Vehicle/trucks workshops, land and construction machines, municipally and forestry technology, etc.



#### Technical data:

Lift volume:	1,000 ml
Stroke:	420.0 mm
Scale division:	25 ml
Connection thread:	M15x1.5IG

	Ø mm	L mm	Weight g
150.9250	60	465.0	931

### PVC Tube

- Fabric-reinforced
- For 150.9250



	L mm	Inner Ø mm	Outer Ø mm	Weight g
150.9253	600.0	10.0	16.0	110

### PVC Tube with curved outlet pipe

- For difficult to reach openings
- With wing nut and sealing for locking
- With external thread M15 x 1.5
- Robust, curved aluminum piping
- Fabric-reinforced
- Ideal for use with KS dispense hand pump 150.9250

**Application range:** For brake fluid, motor / transmission oil, petrol, diesel, fuel oils, spirit, petroleum, antifreeze etc.



	L mm	Ø mm	Bend radius	Weight g
150.9252	750.0	10	120°	125



**Metal pipe, flexible with outlet head**

- For difficult to reach openings
- With wing nut and sealing for locking
- With external thread M15 x 1.5
- Durable, flexible steel pipe
- Ideal for use with KS dispense hand pump 150.9250

**Application range:** For brake fluid, motor / transmission oil, petrol, diesel, fuel oils, spirit, petroleum, antifreeze etc.



	L mm	Ø mm	Wt g
150.9251	250.0	10	82



**Oil can with flexible outlet spout**

- For a wide range of uses
- Flexible, funnel-shaped spout allows for a clean drainage
- Suitable for oil, chemicals, petrol, acid, anti-freeze fluid and non-acidic fluids
- Break-resistant
- Steady
- Graduated scale
- With practical carry handle
- Special plastic



	Spout	Wt g	
150.9234	1	150.9236	150
150.9235	2	150.9236	250

**PRESSURE PUMP VAPORISER**

**Pressure pump vaporiser**

- Made from high-quality polyethylene
- For various chemicals such as detergents, releasing and cleaning fluids, etc.
- Adjustable and closable brass spray head
- Viton seal



	Wt g
150.8251	250
150.8252	330

**MEASURING BEAKER, JUG AND FUNNEL**

**Measuring cup set**

- Configuration of practical measuring cup sizes
- Versatile application possibilities
- Transparent
- Break-proof
- Red primed scale division
- Resistant to oil, petrol and acid
- With handle and spout
- PE (polyethylene)

**Scales:** L/ml, cups, Oz, quart



	Wt g
150.9205 3 pcs 250 - 500 - 1.000 ml	227

**Water can**

- For a wide range of uses
- Break-resistant
- With 2 carry handles
- Pouring spout enables clean emptying
- Suitable for water and coolant fluid
- Special plastic



	Wt g
150.9239	920

**Pressurised pump vaporiser with carry strap**

- Made from high-quality PE plastic
- For various chemicals such as detergents, releasing and cleaning fluids
- With practical carry strap
- Hose length 1.25 m
- Adjustable and closable spray head
- Spray head made from PP and PE plastic



	Wt g
150.8261	1.14
150.8262	1.38

**Single-use colour mixer with cover**

- Single-use colour mixer for mixing all types of paint
- Solvent resistant plastic
- Cover for optimal storage
- With mix scale
- Also suitable for water-based paints



	Material	Colour code	Content	Content	Wt g
500.8056	polypropylene	transparent	400	25	420
500.8057	polypropylene	transparent	650	25	620
500.8058	polypropylene	transparent	1300	25	1100
500.8059	polypropylene	transparent	2240	25	1700

**Funnel set**

- Configuration of practical funnel sizes
- Versatile application possibilities
- Red
- Break-proof
- Resistant to oil, petrol and acid
- Grip strap for convenient use
- HDPE (high density polyethylene)



	Wt g
150.9240 5 pcs Ø 50 - Ø 75 - Ø 95 - Ø 115 - Ø 150 mm	251

1  
2  
3  
4  
5  
6  
7  
8  
9  
10  
11  
12  
13  
14  
15  
16  
17  
18  
19  
20  
21  
22  
23  
24  
25  
26

### Universal funnel set

- Special flexible funnel for hard-to-reach places
- For a wide range of uses
- With bayonet connection and seal
- Direct connection to the oil fill opening
- No more lengthy and time-consuming pouring
- Includes clear hose with sealing plug on the end of the hose
- Bottle with handle for comfortable use
- Reduces loss and dirtying of oily engines
- Special plastic



	Ø Tube mm	Weight	Ø mm	Tube length mm	Weight	
150.9230	3 pcs	14x16	1	160	400	240



### Polyethylene barrel funnel with sieve

- Ideal for safely filling 200 litre steel barrels with liquids via the 2" bung hole
- On the contoured surfaces cans or filters can be placed to drain
- The funnel volume of 30 litres allows for quick pouring also of large liquid volumes
- With cover and a sieve to collect coarse particles
- Large diameter, barrel remains clean
- High sides, spray protection
- 100% UV-stable polyethylene, does not corrode



	Weight	Height mm	Ø mm	Weight
150.9209	30	150.0	590,0	1.70

### PAPER STANDS

#### Wall bracket for paper cleaning roll

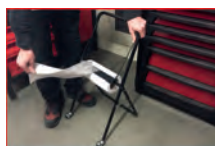
- For all common paper cleaning rolls
- Wide 220-280 mm roll attachment
- Stable steel pipe frame



	Width mm	Height mm	Depth mm	Weight
800.0160	350,0	265,0	230,0	0,93

#### Floor stand for paper cleaning roll

- For all common paper cleaning rolls
- Wide roll attachment of 220-380 mm
- Stable steel pipe frame



	Weight	
800.0158	350 x 735 x 390 mm	2,14

### MAGNETIC HOLDERS

#### Metal magnetic holder

- Creates an organised working area
- Positive and safe mounting
- With 2 exceptionally strong magnets (Ø each 80 mm)
- Has reinforcement on the elevated section
- Impact wrench, sockets and a torque wrench can all be left in their set place



	L mm	Weight
800.0190	390,0	1,46

### Plastic magnetic bowl

- Oblique opening
- For holding screws and other small parts
- Magnetic plate is covered with rubber
- Plastic



	Ø mm	Weight
800.0156	150	750

### Stainless steel magnetic tray

- 1 magnet
- For holding screws and other small parts such as wheel nuts
- Magnetic plate is covered with plastic
- Stainless steel



	Ø mm	Weight
800.0150	150,0	430

### Stainless steel magnetic tray

- 2 magnets
- For holding screws and other small parts such as wheel nuts
- Magnetic plate is covered with plastic
- Stainless steel



	L mm	B mm	Weight
800.0151	240,0	140,0	850

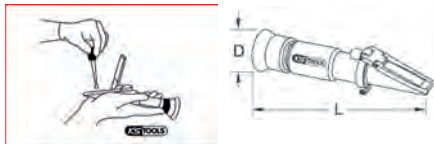




**OPTICAL TEST DEVICE**

**Refractometer - optical tester for battery fluid and antifreeze**

- For the quick and accurate testing of acidity in the battery fluid and the antifreeze content
- Can also be used for coolant and windscreen wiper fluid
- Adjustable eye piece with rubber viewing rest
- With automatic temperature compensation (ATC)
- Also suitable in ambient temperatures of less than 10 °C
- Reading correction function by means of bimetallic measurement
- High quality design made from aluminium
- Good readability due to defined dividing lines
- Recalibration possible
- Includes calibration screwdriver and pipette
- In practical plastic case



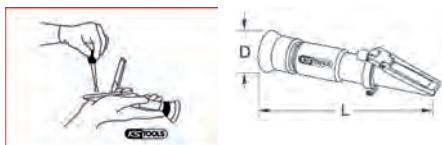
**Technical data:**

Battery acid:	acid density (measuring range 1.1 to 1.4 kg/l)
Coolant water Propylene:	temperature resistance (measuring range 0° to -50° C)
Coolant water Ethylene:	temperature resistance (measuring range 0° to -50° C)
Windscreen water:	antifreeze (measuring range 0° to -40° C)

	D mm	L mm	Glass face mm	kg
550.1290	40.0	149.0	40 x 13	630

**AdBlue refractometer - optical tester for battery fluid, antifreeze and AdBlue additives**

- For the quick and accurate testing of the acidity of the battery fluid, the antifreeze content and the AdBlue additives
- Can also be used for coolant and windscreen wiper fluid
- Adjustable eye piece with rubber viewing rest
- With automatic temperature compensation (ATC)
- Also suitable in ambient temperatures of less than 10 °C
- Reading correction function by means of bimetallic measurement
- High quality design made from aluminium
- Good readability due to defined dividing lines
- Recalibration possible
- Includes calibration screwdriver and pipette
- In practical plastic case



**Technical data:**

Battery acid:	acid density (measuring range 1.1 to 1.3 kg/l)
Coolant water Propylene:	temperature resistance (measuring range -25° to -50° C)
Coolant water Ethylene:	temperature resistance (measuring range -25° to -50° C)
Windscreen water:	antifreeze (measuring range -10° to -40° C)
AdBlue (VRA):	urea content (measuring range 30% - 35%)

	D mm	L mm	Glass face mm	kg
550.1285	40.0	160.0	40 x 13	480

**BARREL PUMP**

**Chemical barrel pump**

- For water soluble, lightly abrasive types such as anti-freeze, mild acids, glass cleaner, soaps and alkalis
- Pump body made from robust PP
- Seal made from NEOP
- Usable for 200 and 220 litre barrels
- For filling measuring jugs, beakers, canisters, etc.



**Technical data:**

Output per stroke cm <sup>3</sup> :	200.00 cm <sup>3</sup>
Output per stroke l/min:	20.0 l/min

	Barrel screw connection	Length of suction pipe mm	tube length mm	kg
150.8253	G2" a	840.0	1350.0	340



**Steel pipe barrel pump**

- Pump body made from die-cast zinc
- Pump bodies from steel
- All steel parts with galvanised surfaces
- With PVC and NBR seal
- Steel outlet manifold
- For all oils up to SAE90, self-lubricating, non-abrasive types, transmission oil, fuel oil, diesel, etc.



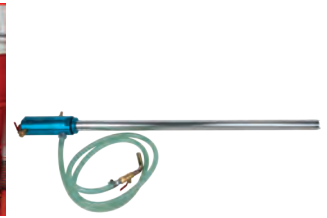
**Technical data:**

Output per stroke cm <sup>3</sup> :	300.00 cm <sup>3</sup>
Output per stroke l/min:	16.0 l/min

	Barrel screw connection	Length of suction pipe mm	kg
150.8254	G2" a	480-900	1.73

**Hand cylinder, barrel pump**

- Pump housing made from die-cast zinc
- Suction tube in two parts, can be adjusted
- For 60/200/220 litre containers
- Seal material NBR
- With flexible OVC exhaust hose
- For oils up to SAE 50, self-lubricating, non-abrasive types such as engine oil, machine oil, cutting oil, undiluted anti-freeze fluid



**Technical data:**

Output per stroke cm <sup>3</sup> :	120.00 cm <sup>3</sup>
Output per stroke l/min:	12.0 l/min

	Barrel screw connection	Length of suction pipe mm	tube length mm	kg
150.8255	G2" a / M64x4	1200.0	1000.0	960

**Handle barrel pump**

- Pump housing made from stable grey cast iron
- With sturdy steel outlet manifold
- Suction pipe adjustable via barrel screw
- For 60/200/220 litre containers
- Seal material NBR
- For filling measuring jugs, beakers, canisters, etc.
- For all oils up to SAE90, self-lubricating, non-abrasive types, fuel oil, diesel, petroleum



**Technical data:**

Output per stroke cm <sup>3</sup> :	250.00 cm <sup>3</sup>
Output per stroke l/min:	25.0 l/min

	Barrel screw connection	Length of suction pipe mm	kg
150.8256	G2" a	980.0	4.90

**AIR BLOW OUT TOOLS**

**Compressed blow out pen**

- In ball point pen form
- With practical pocket clip
- Controllable air volume
- With 2,5 mm nozzle
- With Euro connection
- Direct air coupling suitable for connection
- Light aluminium housing



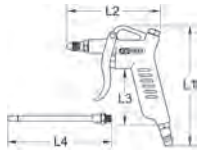
**Technical data:**

Input pressure:	max. 12 bar
Operating pressure:	max. 6,3 bar (90 psi)
Max. flow rate:	360 l/min
Noise pressure level:	90 dbA
Connection thread:	1/4"PT

	D mm	L1 mm	L2 mm	kg
515.1908	10.0	110.0	70.0	150

### Pneumatic blow out pistol with extension

- Ergonomic handle
- Controllable air volume
- With 2,5 mm nozzle
- Direct air coupling suitable for connection
- Easily operated
- With hanging hole
- Includes 1/4" coupling connector
- Solid metal base body
- Robust metal housing



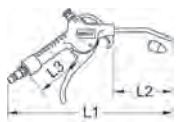
#### Technical data:

Input pressure: max. 15 bar  
 Operating pressure: max. 6,3 bar (90 psi)  
 Max. flow rate: 130 l/min  
 Noise pressure level: 90 dbA  
 Connection thread: 1/4"PT

	L1 mm	L2 mm	L3 mm	L4 mm	g
515.1930	125.0	110.0	75.0	125.0	180

### Pneumatic blow out pistol with flow regulation

- With universal mouth piece
- Ideal for cleaning and removing of foreign objects
- Ergonomic handle
- Controllable air volume
- With hanging function
- Direct air coupling suitable for connection
- Easily operated
- Slip proof handle
- Includes 1/4" coupling connector
- Ultra light robust housing from special plastic



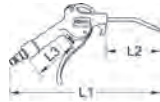
#### Technical data:

Input pressure: max. 15 bar  
 Operating pressure: max. 6,3 bar (90 psi)  
 Max. flow rate: 300 l/min  
 Noise pressure level: 90 dbA  
 Connection thread: 1/4"PT

	L1 mm	L2 mm	L3 mm	g
515.1901	235.0	100.0	75.0	150

### Universal pneumatic blow out pistol

- Ideal for cleaning and removing of foreign objects
- Ergonomic handle
- Controllable air volume
- With hanging function
- Direct air coupling suitable for connection
- Easily operated
- Slip proof handle
- Includes 1/4" coupling connector
- Ultra light robust housing from special plastic



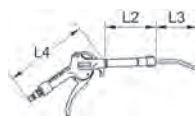
#### Technical data:

Input pressure: max. 15 bar  
 Operating pressure: max. 6,3 bar (90 psi)  
 Max. flow rate: 300 l/min  
 Noise pressure level: 90 dbA  
 Connection thread: 1/4"PT

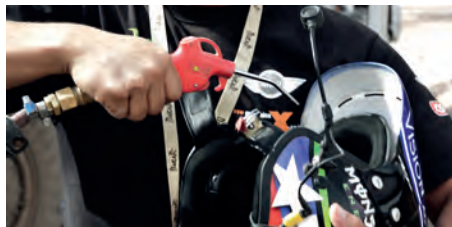
	L1 mm	L2 mm	L3 mm	g
515.1902	235.0	95.0	75.0	170
515.1903	470.0	325.0	75.0	240
515.1904	650.0	500.0	75.0	280

### Telescopic pneumatic blow out pistol

- With stepless extendable nozzle
- Telescopic blast pipe in length and angle adjustable 65 - 280 mm / 360°
- Ideal for cleaning and removing of foreign objects
- Ergonomic handle
- Controllable air volume
- With hanging function
- Direct air coupling suitable for connection
- Easily operated
- Slip proof handle
- Includes 1/4" coupling connector



	L2 mm	L3 mm	L4 mm	g
515.1907	110.0	55.0	140.0	230



### Pneumatic blow out pistol set

- Ideal for cleaning and removing of foreign objects
- Ergonomic handle
- Controllable air volume
- With hanging function
- Direct air coupling suitable for connection
- Easily operated
- Slip proof handle
- Includes 1/4" coupling connector
- Ultra light robust housing from special plastic



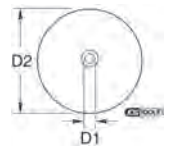
			g
515.1921	3 pcs	Pneumatic blow out pistol set	690

#### consists of:

			g
515.1902	Universal pneumatic blowing pistols, 95 mm	170	
515.1903	Universal pneumatic blowing pistols, 325 mm	240	
515.1904	Universal pneumatic blowing pistols, 500 mm	280	

### Protective shield for compressed-blowing pistols

- Optimal protection for fluids spraying back or particles when blowing
- Suitable to be attached on the compressed-air blowing pistol
- Ideal for models with 6 mm nozzle diameter
- Stable protection shield made from see-through plastic
- Safe and easy use



	D1 mm	D2 mm	g
515.1912	6.0	100.0	50

### THERMOMETER

#### Rod thermometer

- Controls temperature of air streams through air channels
- Controls the water temperature
- With long and narrow measuring instruments
- Scale with °C and °F measurements



	L mm	Working range °C	Working range °F	g
150.1963	1600.0	0 - 220	0 - 440	27

**Digital rod thermometer**

- Controls temperature of air streams through air channels
- Controls the water temperature
- With long, narrow measuring instruments
- Good readability
- Includes 9V block battery
- Includes hold function
- Includes LCD display



	Length mm	Working range °C	
150.1968	125,5	-50 - 150	145

**Infrared thermometer**

- Laser pistol for non contact temperature measurement
- Ideally suited for the automotive sector, industrial, and construction usage Chemical and foodstuffs industry
- Laser measuring beam with a red measuring point
- Illuminating Display
- LCD Digital display
- Automatic switching off
- Includes 9V block battery
- Stable plastic housing

**Application range:** In turning motors, difficult to access places, fluids, under current line directions, in heating appliances, gas and, air-conditioning, coolant systems, brake discs aggressive chemicals and groceries



**Technical data:**

Switchable:	°C / °F
Working range:	-50° - 550 °C
Emission factor:	adjust to 0.95
Power output max:	1mW
Power requirement:	9V block battery

150.3040	Infrared thermometer	250

**AIR PURIFIER**

**Plasma air-cleaner with ionisator technology**

- Eliminates odours and disinfects the interior of the vehicle
- Compact, lightweight, and high ozone emission
- For use in closed passenger compartments
- In odour elimination mode, it switches off automatically after 60 minutes
- In disinfection mode, it automatically switches off after 30 minutes and immediately switches to odour elimination mode for 30 minutes
- Works without chemical additives, guaranteed to leave no residue
- It leaves no traces, even on sensitive surfaces
- Removes mould, bacteria, fungus and mites
- Includes an active carbon HEPA technology replacement filter
- Simple operation



**Technical data:**

Dimensions:	173x122x49 mm
Battery type:	Lithium-ion
Rechargeable battery:	<850 mA/h
Operational voltage:	DC 12-24V / AC 100-240V / 50/60 Hz
Power consumption:	5
Ozone transformation:	5 mg/h
Negative Ion concentration:	3000 pcs/cm <sup>2</sup>
Covering scope:	15m <sup>2</sup>

	Replacement filter	
550.1183	550.1199	360

**HEAT GUNS**

**Heat blow gun set**

- High-performance hot-air gun with two supply levels
- Seamless temperature regulation
- Adjustment wheel with marking for 6 temperature settings
- Stand for high up-right assembly
- Includes 4 different replacement nozzles

**Application range:** Removing paint, soldering pipes, shrinking PVS, welding and bending plastics, drying, thawing, etc.

**Technical data:**

Performance:	2000 Watt
Amperage:	8A
Operating voltage:	220/240 V (50 Hz)
Temperature settings:	1=50 °C/2=100 °C/3=200 °C/4=350 °C/5=550 °C/6=650 °C
Level 1:	200-300 l/min (max. 450 °C)
Level 2:	350-500 l/min (max. 650 °C)



960.1190	5 pcs Heat blow gun set	1110

consists of:

960.1191	Heat blow gun	670
960.1192	Wide nozzle 75 mm	20
960.1193	Reflector nozzle	20
960.1194	Reduction nozzle 45 mm	20
960.1195	Reduction nozzle 14 mm	50

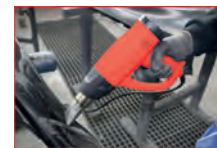
**Digital heat blow gun set**

- High-performance hot-air gun with two supply levels
- Digital seamless temperature regulation
- Includes jig for up-right assembly
- 10 blower levels
- Includes 4 different replacement nozzles
- LCD display

**Application range:** Removing colours, soldering pipes, shrinking PVS, welding and bending plastics, drying, thawing, etc.

**Technical data:**

Performance:	2000 Watt
Amperage:	10A
Operating voltage:	220/240 V (50 Hz)
Temperature settings:	50-650 °C
Level 1:	200-300 l/min (max. 450 °C)
Level 2:	350-500 l/min (max. 650 °C)



960.1175	5 pcs Digital heat blow gun set	850

consists of:

960.1176	Heat blow gun, digital	740
960.1192	Wide nozzle 75 mm	20
960.1193	Reflector nozzle	20
960.1194	Reduction nozzle 45 mm	20
960.1195	Reduction nozzle 14 mm	50

